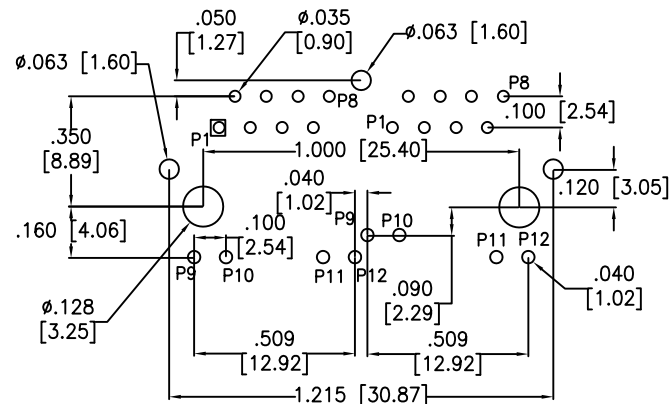
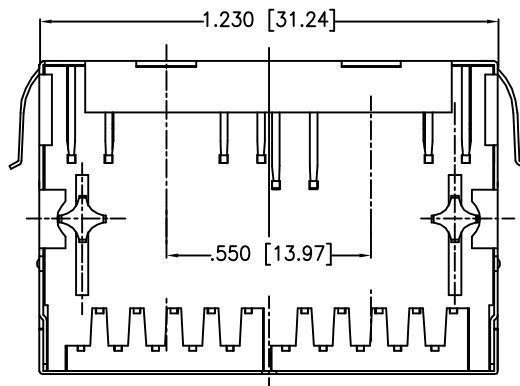
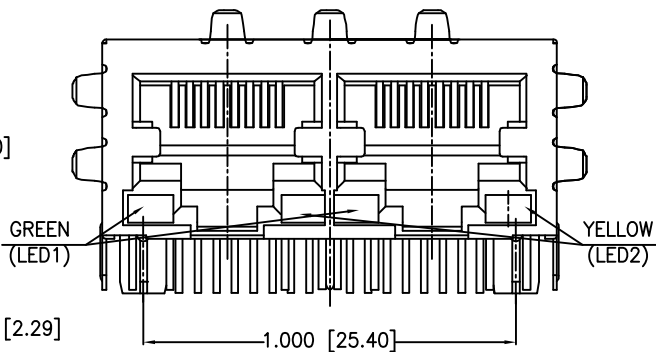
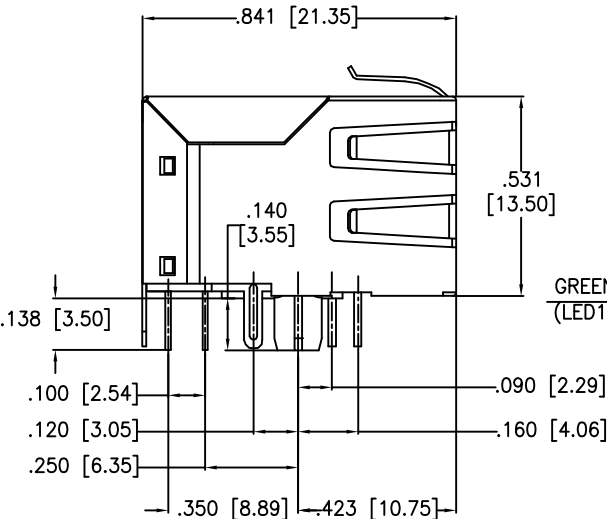


APPROVED: _____
 DATE: _____ TITLE: _____

Rev	AWO #	Description	Date	Appr
-		RELEASED	3/4/10	
A		CORRECTED PCB LAYOUT	4/12/10	AY/LW
B		UPDATED DRAWING	7/29/16	AY/MY



RECOMMENDED PCB LAYOUT

SPECIFICATIONS:

Material:
 Housing: PA66, rated UL 94V-0, Color: Black
 Insert: PBT, rated UL 94V-0, Color: Black
 Contacts: Copper Alloy
 Shield: Copper Alloy, Nickel plated
 Plating:

Round contact
 Gold over Nickel underplate overall
 Flat contact
 Gold over Nickel underplate on contact area,
 Tin over Nickel underplate on solder tails
 (See chart for thickness)

Electrical:
 Voltage rating: 150 VAC
 Contact Resistance: 20 mohms max
 Insulation resistance: 500 Mohms min
 Dielectric withstanding voltage: 1500 VAC or 2250VDC for 1 minute
 Temperature Rating:

Operating temperature: 0°C to +70°C
 Environmental:
 Lead free, RoHS compliant.

X	PLATING
0	15 μ m Gold
1	30 μ m Gold
2	50 μ m Gold
6	6 μ m Gold



UNLESS OTHERWISE SPECIFIED
 ALL DIMENSIONS ARE INCHES [MM]
 TOLERANCES: EXCEPT AS NOTED
 INCHES HOLES
 .X ± .10 Ø.X ± .10
 .XX ± .020 Ø.XX ± .015
 .XXX ± .015 Ø.XXX ± .010

APPROVALS		DATE
DRAWN	SS	3/4/10
CHECKED		
APPROVED		

ADAM TECH

909 Rahway Avenue, Union, NJ 07083
 Phone: 908-687-5000 Fax: 908-687-5710

TITLE
 MODULAR JACK GANGED, 2 PORT, 8P8C
 W/ LED1 GREEN, LED2 YELLOW

SIZE	PART NO.	REV.
X	MTJG-2-88TX1-FSD-PG-LH-M4	B
REF:	S00005C	SCALE: NTS SHEET 1 OF 2

6

5

4

3

2

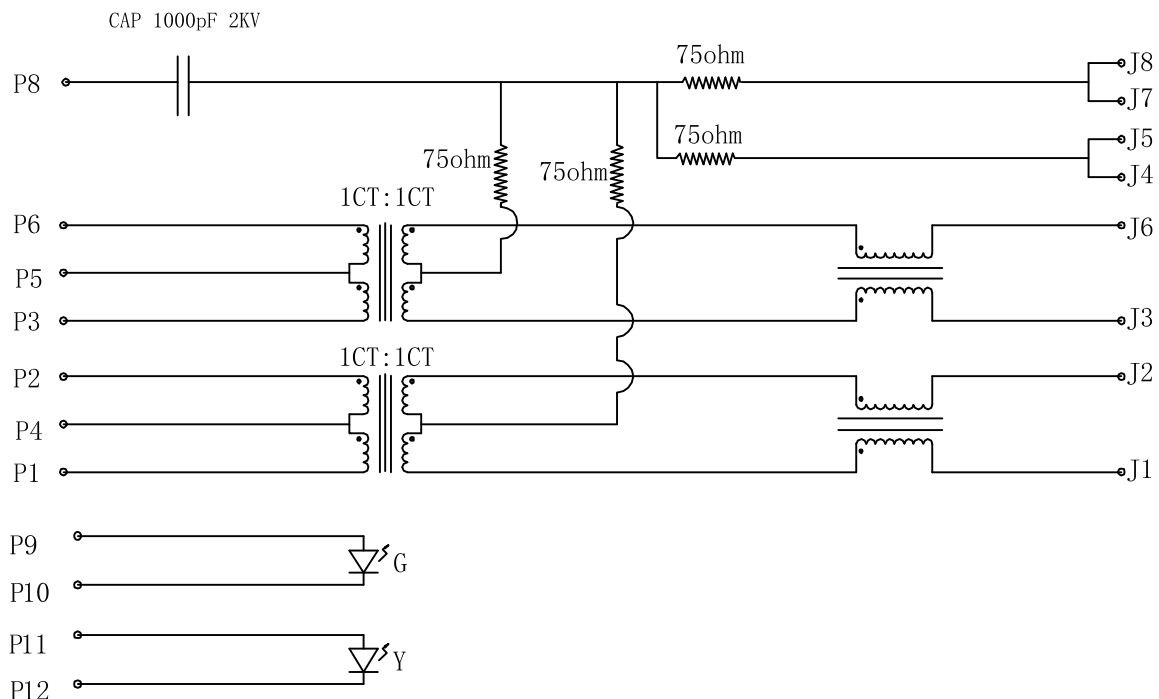
1

APPROVED: _____

DATE: _____ TITLE: _____

Rev	AWO #	Description	Date	Appr
-----	-------	-------------	------	------

SEE SHT 1 OF 2 FOR REVISION



ELECTRICAL SPECIFICATIONS

- Turns Ratio: (P1 ~ P2) : (J1 ~ J2) 1:1 ±3%
(P3 ~ P6) : (J3 ~ J6) 1:1 ±3%
- Inductance: (P1 ~ P2) 350uH min. @ 0.1V, 100KHZ, 8mA DC Bias
(P3 ~ P6) 350uH min. @ 0.1V, 100KHZ, 8mA DC Bias
- Leakage Inductance: P1 ~ P2 (with J1 and J2 Short): 0.35uH Max. @ 1 MHz
P3 ~ P6 (with J3 and J6 Short): 0.35uH Max. @ 1 MHz
- Interwinding Capacitor: (P1 ~ P2) : (J1 ~ J2): 35pF max. @ 1MHZ
(P3 ~ P6) : (J3 ~ J6): 35pF max @ 1mhz
- DC Resistance: (J1 ~ J2) : (J3 ~ J6): 1.2 Ohms Max.
- Return Loss: 1MHZ to 30MHZ: -18dB MIN
30MHZ to 60MHZ: -(18-20LOG(f/30))dB MIN (WHERE f IS IN MHZ)
60MHZ to 80MHZ: -12dB MIN
- Dielectric Withstanding: (P1~P2) : (J1~J2): (P3~P4) : (J3~J6) : 1500VAC or 2250VDC
- Insertion Loss: 1MHZ TO 100MHZ : -1.2dB MAX
- Cross Talk: 1MHZ to 100MHZ: -30dB MIN
- Common to Common mode attenuaton: 1MHZ TO 100MHZ: -30dBMIN

UNLESS OTHERWISE SPECIFIED
ALL DIMENSIONS ARE INCHES [MM]
TOLERANCES: EXCEPT AS NOTED
INCHES HOLES

.X ± .10	Ø.X ± .10
.XX ± .020	Ø.XX ± .015
.XXX ± .015	Ø.XXX ± .010

ADAM TECH

909 Rahway Avenue, Union, NJ 07083
Phone: 908-687-5000 Fax: 908-687-5710

TITLE
MODULAR JACK GANGED, 2 PORT, 8P8C
W/ LED1 GREEN, LED2 YELLOW

APPROVALS		DATE
DRAWN	SS	3/4/10
CHECKED		
APPROVED		

SIZE	PART NO.	REV.
X	MTJG-2-88TX1-FSD-PG-LH-M4	B
REF: S00005C	SCALE: NTS	SHEET 1 OF 2

6

5

4

3

2

1