

This document is the property of Amphenol Corporation and is delivered on the express condition that is not to be disclosed, reproduced or used, in whole or in part, for manufacture or sale by anyone other than Amphenol Corporation without its prior consent, and that no right is granted to disclose or to use any information in this document.

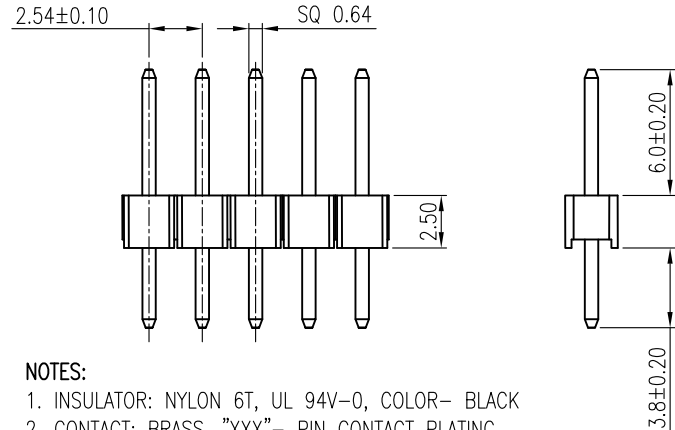
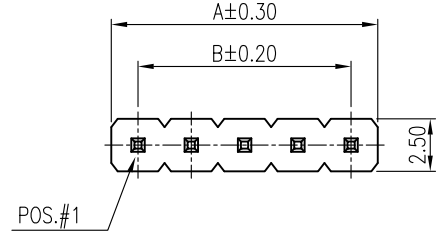
The marking on this product doesn't contain environmental hazardous materials per Material Specification 55-00259 for Sony GP compliant or per directive 2002/95/EC for RoHS compliant.



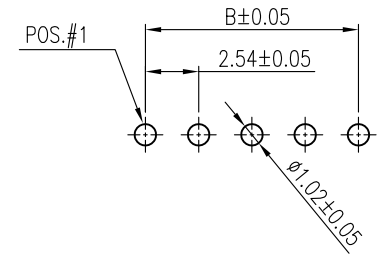
ORIGINAL



REVISIONS				
SYM	ECN No.	DESCRIPTION	DATE	APPROVED
A		RELEASE FOR RoHS	08/15/2005	Henry Ko
B	NE-06139	CHANGED PBT TO NYLON 6T	05/23/2006	Armstrong Koo
C	NE-08293	MODIFIED DIEMENTIONS	08/20/2008	Hank Hsu
D	NE-10188	MODIFIED OUTLINE AND DIMENSIONS	11/12/2010	Arron Lin
E	NE-12138	MODIFIED DRAWING	08/22/2012	Roger Tsai



- NOTES:**
- INSULATOR: NYLON 6T, UL 94V-0, COLOR- BLACK
 - CONTACT: BRASS, "XXX"- PIN CONTACT PLATING
 "005"- 15μ" GOLD
 "010"- 30μ" GOLD
 "018"- FULL GOLD FLASH
 "025"- 5μ" GOLD
 "032"- FULL TIN
 UNDER NICKEL PLATING 50μ" THICKNESS MIN. OVERALL.
 - THIS PRODUCT DOESN'T CONTAIN ENVIRONMENTAL HAZARDOUS MATERIALS PER DIRECTIVE 2002/95/EC FOR RoHS.
 - THE PRODUCT MUST BE FOR DIP PROCESS ONLY
 - CURRENT RATING: 3.0 Amps/contact MAX.



RECOMMENDED P.C.B. LAYOUT

G800 WC 268 XXX EU	1 x 40 = 40	101.60	99.06
G800 WC 269 XXX EU	1 x 39 = 39	99.06	96.52
G800 WC 270 XXX EU	1 x 38 = 38	96.52	93.98
G800 WC 271 XXX EU	1 x 37 = 37	93.98	91.44
G800 WC 272 XXX EU	1 x 36 = 36	91.44	88.90
G800 WC 273 XXX EU	1 x 35 = 35	88.90	86.36
G800 WC 274 XXX EU	1 x 34 = 34	86.36	83.82
G800 WC 275 XXX EU	1 x 33 = 33	83.82	81.28
G800 WC 276 XXX EU	1 x 32 = 32	81.28	78.74
G800 WC 277 XXX EU	1 x 31 = 31	78.74	76.20
G800 WC 278 XXX EU	1 x 30 = 30	76.20	73.66
G800 WC 279 XXX EU	1 x 29 = 29	73.66	71.12
G800 WC 280 XXX EU	1 x 28 = 28	71.12	68.58
G800 WC 281 XXX EU	1 x 27 = 27	68.58	66.04
G800 WC 282 XXX EU	1 x 26 = 26	66.04	63.50
G800 WC 283 XXX EU	1 x 25 = 25	63.50	60.96
G800 WC 284 XXX EU	1 x 24 = 24	60.96	58.42
G800 WC 285 XXX EU	1 x 23 = 23	58.42	55.88
G800 WC 286 XXX EU	1 x 22 = 22	55.88	53.34
G800 WC 287 XXX EU	1 x 21 = 21	53.34	50.80
G800 WC 288 XXX EU	1 x 20 = 20	50.80	48.26
G800 WC 289 XXX EU	1 x 19 = 19	48.26	45.72
G800 WC 290 XXX EU	1 x 18 = 18	45.72	43.18
G800 WC 291 XXX EU	1 x 17 = 17	43.18	40.64
G800 WC 292 XXX EU	1 x 16 = 16	40.64	38.10
G800 WC 293 XXX EU	1 x 15 = 15	38.10	35.56
G800 WC 294 XXX EU	1 x 14 = 14	35.56	33.02
G800 WC 295 XXX EU	1 x 13 = 13	33.02	30.48
G800 WC 296 XXX EU	1 x 12 = 12	30.48	27.94
G800 WC 297 XXX EU	1 x 11 = 11	27.94	25.40
G800 WC 298 XXX EU	1 x 10 = 10	25.40	22.86
G800 WC 299 XXX EU	1 x 9 = 9	22.86	20.32
G800 WC 300 XXX EU	1 x 8 = 8	20.32	17.78
G800 WC 301 XXX EU	1 x 7 = 7	17.78	15.24
G800 WC 302 XXX EU	1 x 6 = 6	15.24	12.70
G800 WC 303 XXX EU	1 x 5 = 5	12.70	10.16
G800 WC 304 XXX EU	1 x 4 = 4	10.16	7.62
G800 WC 305 XXX EU	1 x 3 = 3	7.62	5.08
G800 WC 306 XXX EU	1 x 2 = 2	5.08	2.54
PART NUMBER	NO. OF POS.	A	B

TOLERANCE	DRAWN	APPROVALS	DATE	TITLE						
X.	DESIGNED	Aqua Chou	08/22/2012	G800 SERIES SINGLE, DUAL ROWS HEADER 2.54MM-PITCH STRAIGHT PCB MOUNT	 Amphenol Corporation Amphenol Taiwan Corporation					
X.X ±0.30	CHECKED	Roger Tsai	08/22/2012							
X.XX ±0.20	APPROVED	Roger Tsai	08/22/2012							
X.XXX ±0.10	DWG TYPE	CUST DWG	PROJECT CODE	HEAD	UNIT	mm	SIZE	A3	PART No.	G800WCXXXXXXEU
ANGULAR ±1°					SCALE	NA	SHEET	1 OF 1	DWG No.	G800WCXXXXXXEU_1
UNLESS OTHERWISE SPECIFIED									REV.	E

This document is the property of Amphenol Corporation and is delivered on the express condition that it is not to be disclosed, reproduced or used, in whole or in part, for manufacture or sale by anyone other than Amphenol Corporation without its prior consent, and that no right is granted to disclose or to use any information in this document.

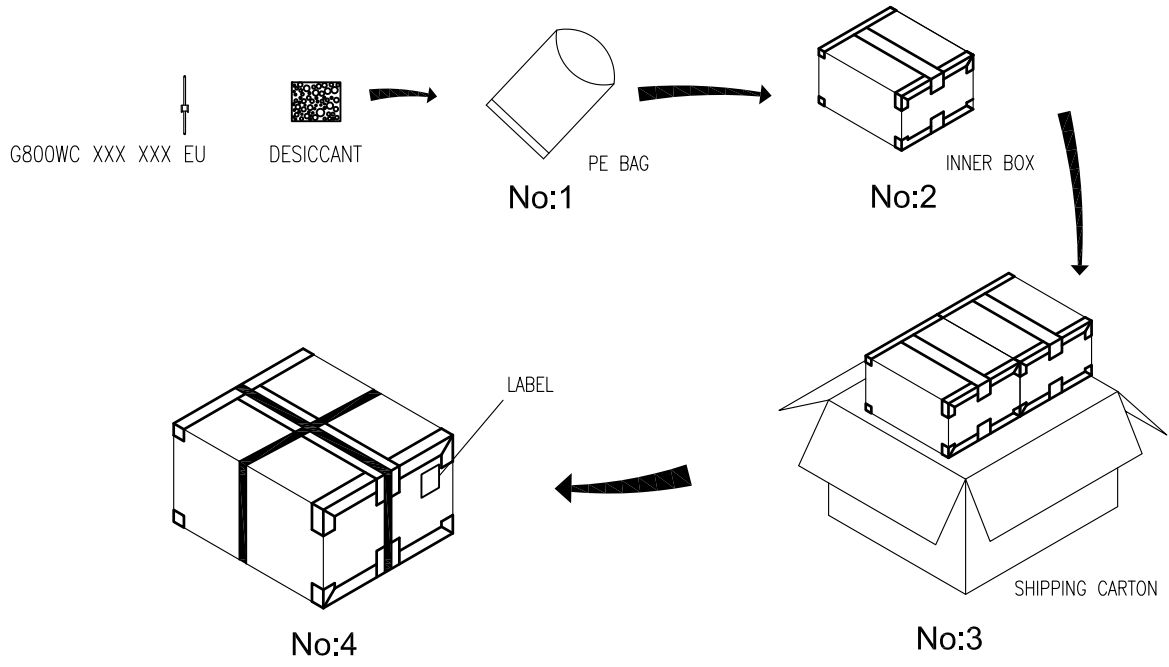
The marking on this product doesn't contain environmental hazardous materials per Material Specification SS-00259 for Sony GP compliant or per directive 2002/95/EC for RoHS compliant.



ORIGINAL



REVISIONS				
SYM	ECN No.	DESCRIPTION	DATE	APPROVED
A		RELEASE FOR RoHS	08/15/2005	Henry Ko
B	NE-06139	CHANGED PBT TO NYLON 6T	05/23/2006	Armstrong Kao
C	NE-08293	MODIFIED DIEMENTIONS	08/20/2008	Hank Hsu
D	NE-10188	MODIFIED OUTLINE AND DIMENSIONS	11/12/2010	Arron Lin
E	NE-12138	MODIFIED DRAWING	08/22/2012	Roger Tsai



NOTES:

1. PE BAG SIZE : 195 X 265 mm
2. INNER BOX SIZE : 215 X 175 X 150 mm
3. SHIPPING CARTON SIZE : 370 X 230 X 175 mm

G800WC 302 XXX EU	06	1000	8	2	16000	5.8	6.5
G800WC 305 XXX EU	03	1000	10	2	20000	3.7	4.4.
G800WC 306 XXX EU	02	2000	5	2	10000	1.2	2.0
P/N	POS.	PCS/BAG	BAG/INNER BOX	INNER BOX/SHIPPING BOX	QUANTITY (PCS)	N.W. KG	G.W. KG

TOLERANCE		APPROVALS		DATE	TITLE		Amphenol®		
X.		DRAWN	Aqua Chou	08/22/2012	G800 SERIES SINGLE, DUAL ROWS HEADER 2.54MM-PITCH STRAIGHT PCB MOUNT		Amphenol Corporation Amphenol Taiwan Corporation		
X.X	±0.30	CHECKED	Roger Tsai	08/22/2012					
X.XX	±0.20	APPROVED	Roger Tsai	08/22/2012					
X.XXX	±0.10								
ANGULAR	±1°	DWG TYPE	CUST DWG	PROJECT CODE	HEAD	UNIT	mm	SIZE	A3
UNLESS OTHERWISE SPECIFIED						SCALE	NA	SHEET	2 OF 2
						PART No.		G800WCXXXXXXEU	
						DWG No.		G800WCXXXXXXEU_1	
						REV.		E	