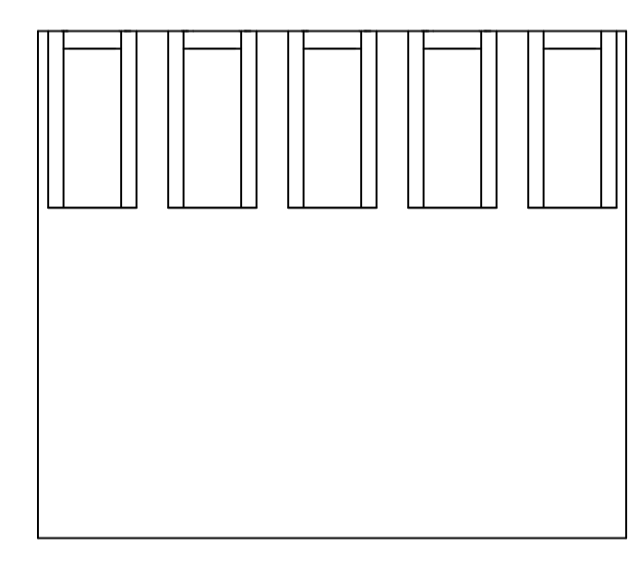
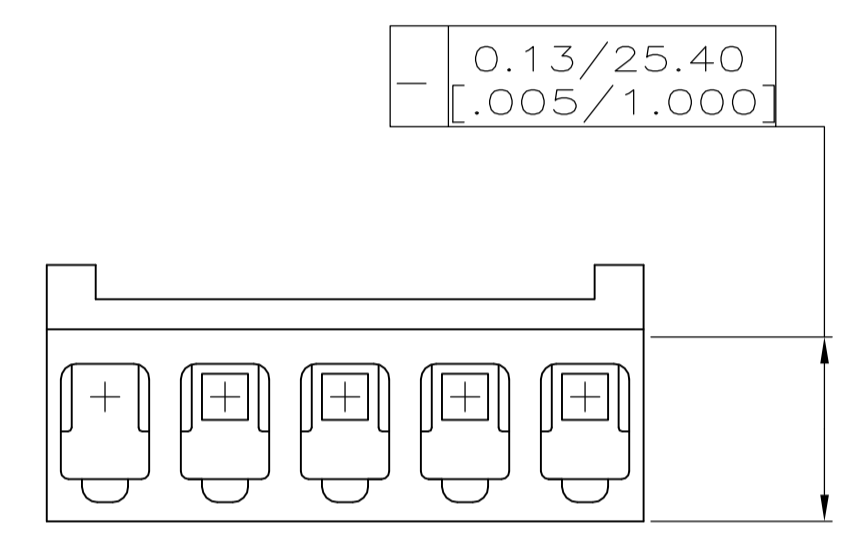
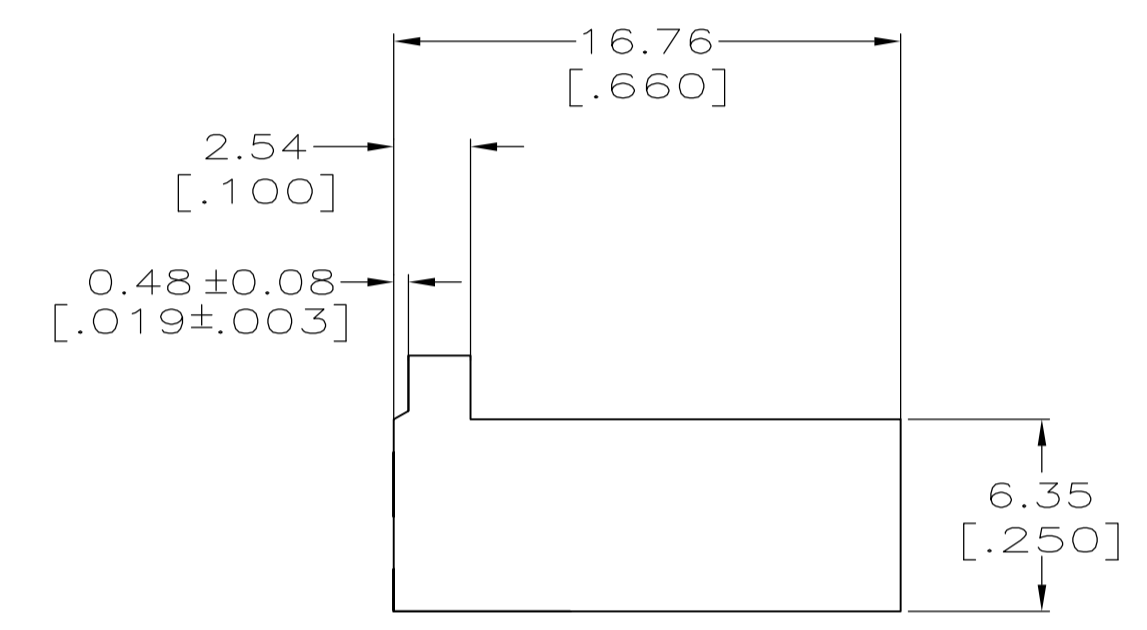
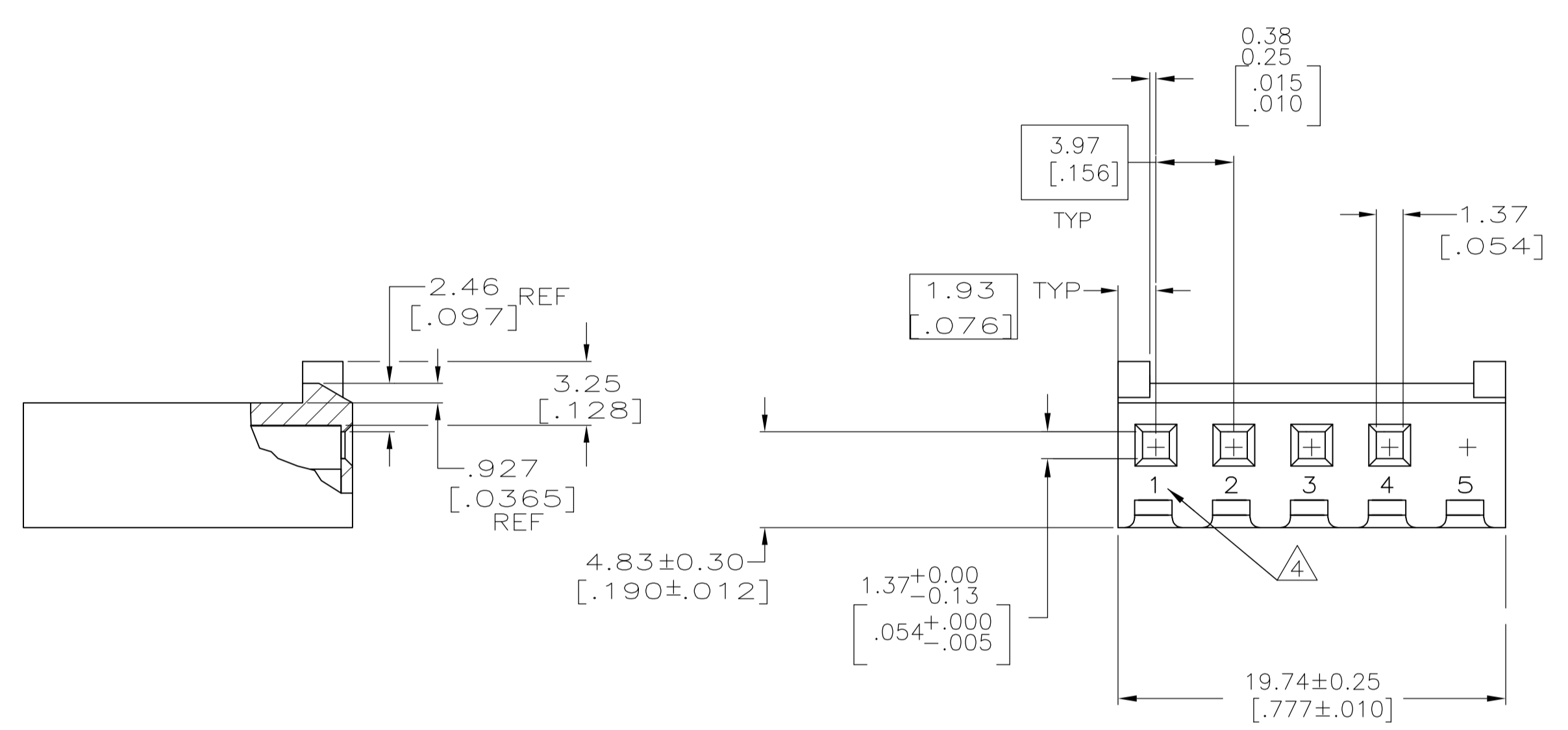
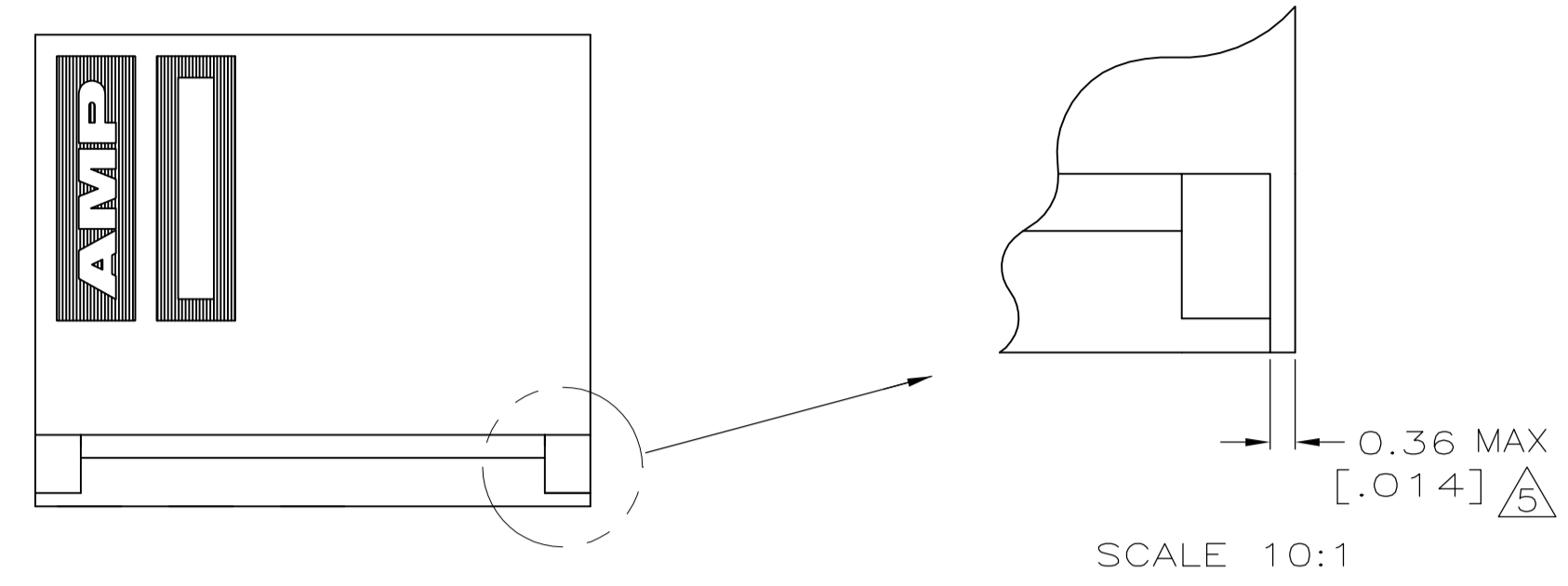


LOC	DIST	REVISIONS			
P	LTR	DESCRIPTION	DATE	DN	APVD
B		REVISED PER ECO-12-007810	28JUL12	KH	SM

- 1 UNIT ACCEPTS 1.14[.045] SQUARE OR ROUND POST.
- 2 UNIT ACCEPTS STANDARD SL-156 CONTACTS.
- 3 UNIT ACCEPTS KEYING PLUG 640254-1 AND KEYING PIN 640255-1.
- 4 IDENTIFICATION NUMBER FOR ALL POSITIONS, OR FOR POSITION 1 ONLY, WILL BE LOCATED AS SHOWN.
- 5 OPTIONAL CONSTRUCTION, BOTH ENDS.
- 6 DIMENSIONS IN BRACKETS ARE IN INCHES.



5	647346-5
NO OF POSN	PART NUMBER

THIS DRAWING IS A CONTROLLED DOCUMENT.		DWG: K. WHITAKER 04NOV2005	TE Connectivity	
DIMENSIONS: mm [INCHES]		CHK: D. ROSSI 04NOV2005	NAME: HOUSING WITH LOCKING RAMP AND POLARIZING TABS, POSITION 5 BLOCKED, SL-156	
TOLERANCES UNLESS OTHERWISE SPECIFIED:		APP'D: D. ROSSI 04NOV2005	PRODUCT SPEC: APPLICATION SPEC	
0. PLC	± -	SIZE: A1		
1. PLC	± -	CAGE CODE: 00779		
2. PLC	± -	DRAWING NO: 647346		
3. PLC	± 0.13 [.005]	RESTRICTED TO: CUSTOMER DRAWING		
4. PLC	± -	SCALE: 4:1		
ANGLES	± -	SHEET: 1 OF 1		
MATERIAL: NYLON, UL 94V-0	FINISH: -	REV: B		

