



3300 MHz Band Pass Filter

Part Number: AE3300B10367



Electrical specifications

Center Frequency (CF): 3300 MHz
Relative Bandwidth (1 dBc): 405 MHz min
Relative Bandwidth (3 dBc): 410 MHz nominal
Ripple in Passband: 0.5 dB (max)
Insertion loss @ CF: 1 dB (max)
Return loss @ CF: 14 dB (max)
Rejection (at CF +/- 600 MHz): 40 dB (min)

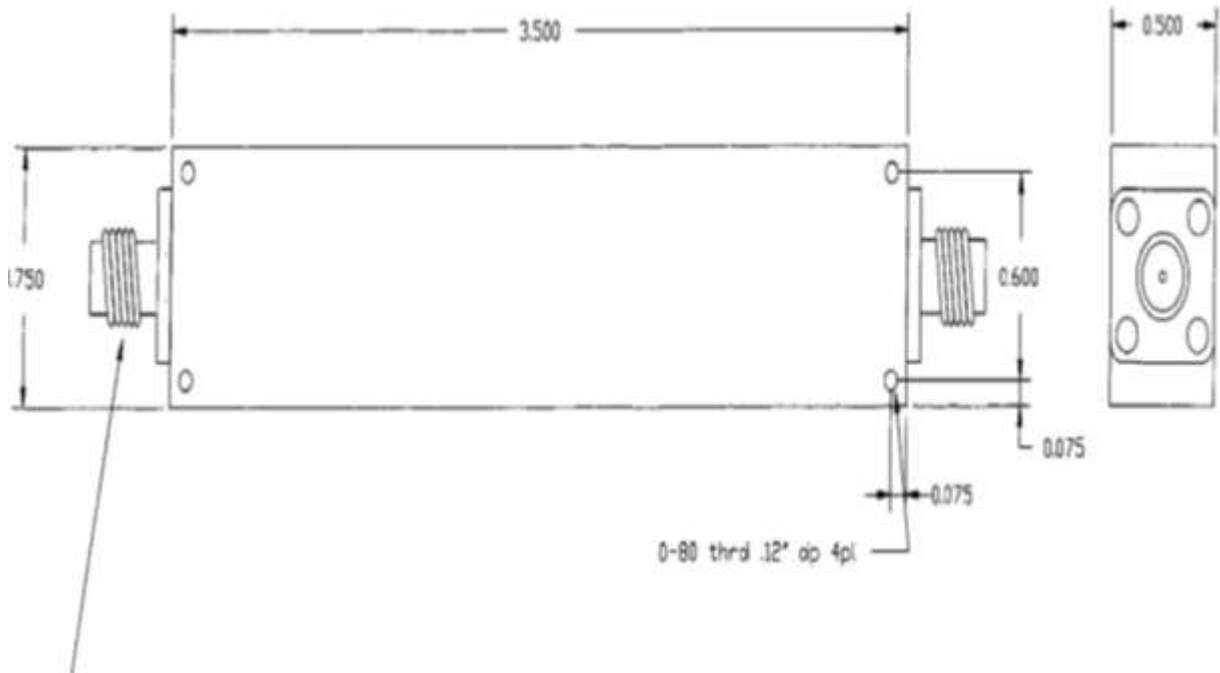
Mechanical

Mounting Method: Threaded Holes
Connector Type: SMA (F)
Dimensions: 3.50 x 0.75 x 0.50 Inches

Environmental

Operating Temperature: -55 to +85° C
Humidity: Up to 95%
Shock: 20 G. 11ms
Vibration: 20 G. 5 to 200Hz

Outline Drawing:



2 decimal places: +/-0.01 inches [+/- 0.3mm]
 3 decimal places: +/- 0.005 inches [+/- 0.13mm]
 Angles: +/- 1 Deg.

When max dimensions are called out the above tolerances do not apply as long as it is under the max call out.



3300 MHz Band Pass Filter

Part Number: AE3300B10367

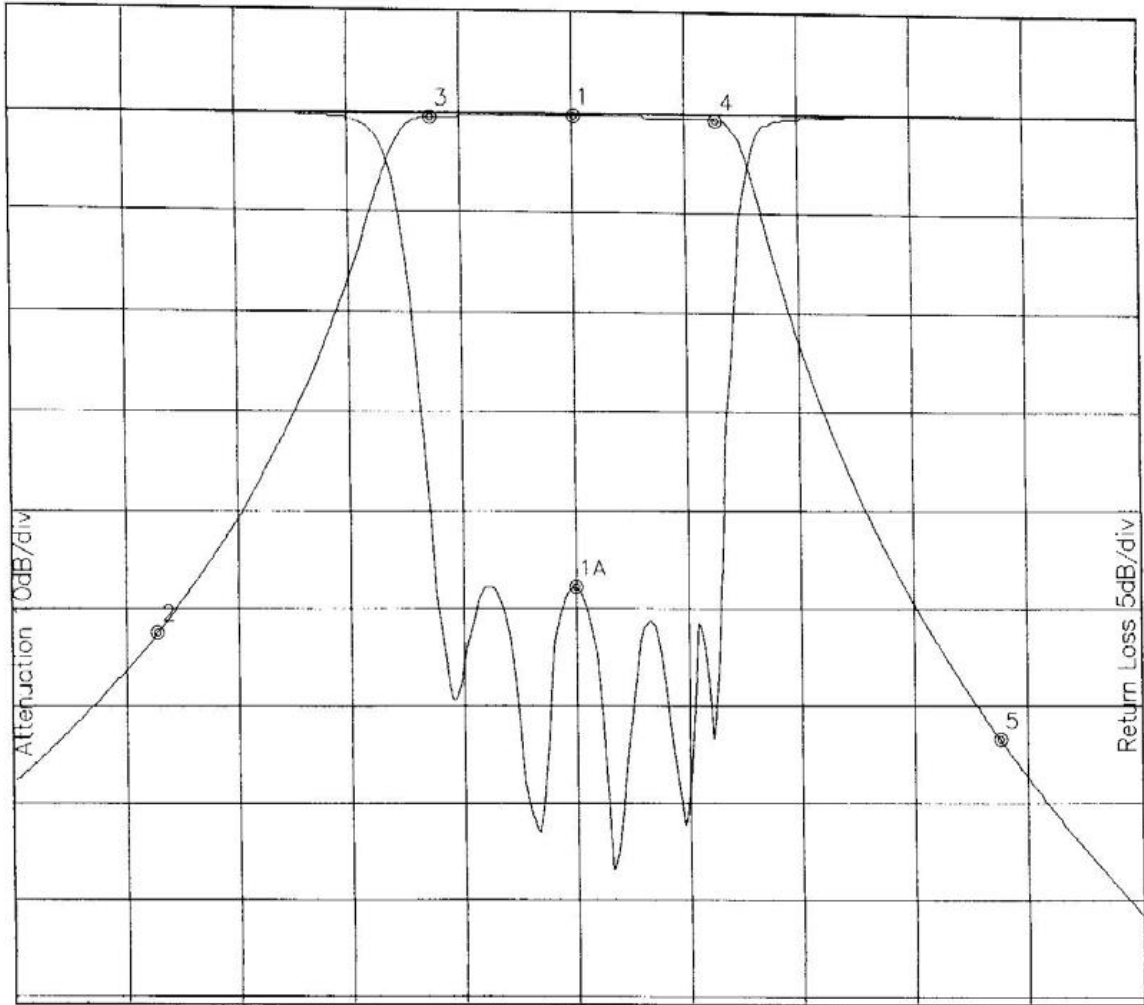


Simulated Plot :

A4071.lad

JUL 16, 2009

Attenuation/Return Loss



Attenuation Start: 2.50GHz Stop: 4.10GHz

Return Loss Start: 2.50GHz Stop: 4.10GHz

Marker 1 Freq 3.301GHz Atten -0.296dB
 Marker 2 Freq 2.702GHz Atten -52.484dB
 Marker 3 Freq 3.097GHz Atten -0.380dB
 Marker 4 Freq 3.503GHz Atten -0.563dB
 Marker 5 Freq 3.901GHz Atten -63.581dB

Marker 1A Freq 3.299GHz Ret Loss -23.960dB

Note: This is a simulated response plot. Actual performance might differ.