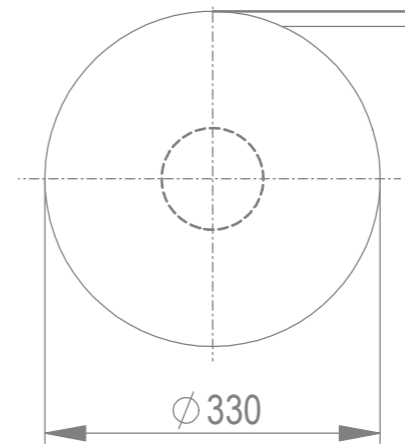
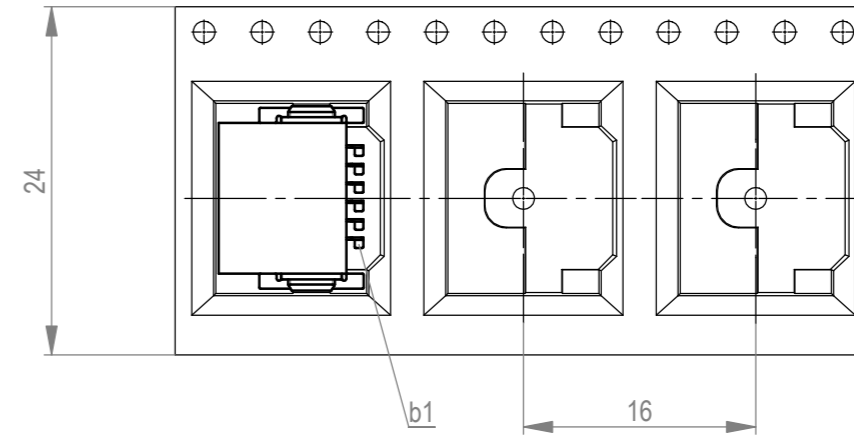


Verpackt im Gurt in Anlehnung an DIN IEC 60286-3
 tape on reel packaging according to DIN IEC 60286-3
 Verpackungseinheit: 560 Stück
 packaging unit: 560 pcs



Abspulrichtung - reel off direction →



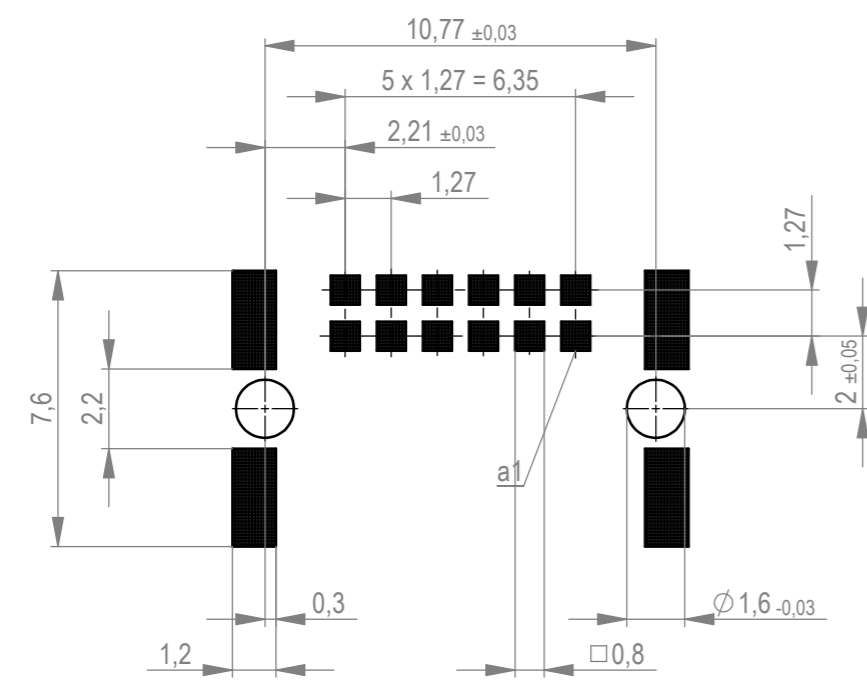
Anforderungsstufe 1
 performance level 1

Kontaktbereich vergoldet
 mating area gold plating

Anschlussbereich verzinkt 4-6 µm
 terminal area 4-6 µm tin plating

Koplanarität der Anschlüsse ≤ 0,1 mm
 coplanarity area of termination ≤ 0,1 mm

Leiterplatten-Layout Vorschlag für SMT
 PCB-Layout Proposal for SMT



BA7-03 - Standard Bauhöhe
 type7-03 - Standard Assembly Height

Wichtigste sowie vollständige dieses Dokuments, Verwertung und Mitteilung dieses Inhalts sind
 ohne schriftliche Genehmigung von ERNI International AG (Original) ist
 Alle Rechte für den Fall der Patent-, Gebrauchsmarken- oder Geschmackschutzrechte vorbehalten.
 The reproduction, distribution and utilization of this document as well as the communication
 of its contents in any form or by any means without the prior written permission of ERNI
 International AG is prohibited. All rights reserved in the event of a patent, utility model or design.

Dimension no.	Tolerances	Scale	5:1
	ISO 8015	Material	
Customer drawing:	Subject to modification without prior notice. Drawing will not be updated.		
All rights reserved. Only for information. To ensure that this is the latest version of this drawing, please contact one of the ERNI companies before using.	Messerli. SMC-B 12-SMD-BA7-03 Male SMC-B 12-SMD-type7-03		
f	28.01.2020	ERNI International AG Zürichstrasse 72 8306 Brüttensellen - Zürich Switzerland	154763
Index	Date	Class	SMCB