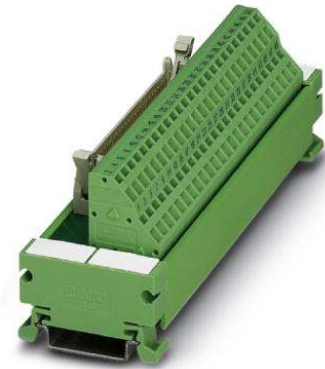


# UM 45-FLK14/ZFKDS

Order No.: 2293527

The illustration shows a 20-position version




<http://eshop.phoenixcontact.de/phoenix/treeViewClick.do?UID=2293527>

VARIOFACE module, with spring-cage connection and flat-ribbon cable plug connector, for mounting on NS 35/7.5, 14-pos.



## Commercial data

GTIN (EAN)	 4 017918 120429
sales group	I001
Pack	1 pcs.
Customs tariff	85369010
Catalog page information	Page 281 (IF-2009)

## Product notes

WEEE/RoHS-compliant since:  
09/22/2006



<http://www.download.phoenixcontact.com>  
Please note that the data given here has been taken from the online catalog. For comprehensive information and data, please refer to the user documentation. The General Terms and Conditions of Use apply to Internet downloads.

## Technical data

### General data

Nominal voltage $U_N$	< 50 V AC
	60 V DC
Max. current carrying capacity per branch	1 A
Number of positions	14

Width	59 mm
Height	45 mm
Depth	50 mm
Status display	No
Ambient temperature (operation)	-20 °C ... 50 °C
Ambient temperature (storage/transport)	-20 °C ... 70 °C
Test voltage	500 V AC (50 Hz, 1 min.)
Mounting position	Any
Standards/regulations	IEC 60664 DIN EN 50178 IEC 62103
Pollution degree	2
Surge voltage category	II

#### Connection data

Connection 1	PCB connection
Connection in acc. with standard	IEC / EN
Type of connection	Spring-cage connection
Conductor cross section solid min.	0.2 mm <sup>2</sup>
Conductor cross section solid max.	2.5 mm <sup>2</sup>
Conductor cross section stranded min.	0.2 mm <sup>2</sup>
Conductor cross section stranded max.	1.5 mm <sup>2</sup>
Conductor cross section AWG/kcmil min.	24
Conductor cross section AWG/kcmil max	14
Stripping length	8 mm
Connection 2	Flat-ribbon cable connection
Type of connection	Flat-ribbon cable plug connector in acc. with IEC 60603-13
Number of positions	14

#### Certificates / Approvals

Certification CUL, GOST, UL

Accessories		
Item	Designation	Description
<b>Cable/conductor</b>		
2295729	FLK 14/EZ-DR/ 30/KONFEK	Round cable set, with two 14-pos. socket strips (1:1 connection), for connecting 8 channels, cable length: 0.3 m
2288901	FLK 14/EZ-DR/ 50/KONFEK	Round cable set, with two 14-pos. socket strips (1:1 connection), for connecting 8 channels, cable length: 0.5 m
2296977	FLK 14/EZ-DR/ 50/KONFEK/S	Assembled shielded round cable, with two 14-pos. female connectors (1:1 connection), for connecting 8 channels, length: 0.5 m
2288914	FLK 14/EZ-DR/ 100/KONFEK	Round cable set, with two 14-pos. socket strips (1:1 connection), for connecting 8 channels, cable length: 1 m
2296980	FLK 14/EZ-DR/ 100/KONFEK/S	Assembled shielded round cable, with two 14-pos. female connectors (1:1 connection), for connecting 8 channels, length: 1 m
2288927	FLK 14/EZ-DR/ 150/KONFEK	Round cable set, with two 14-pos. socket strips (1:1 connection), for connecting 8 channels, cable length: 1.5 m
2296993	FLK 14/EZ-DR/ 150/KONFEK/S	Assembled shielded round cable, with two 14-pos. female connectors (1:1 connection), for connecting 8 channels, length: 1.5 m
2288930	FLK 14/EZ-DR/ 200/KONFEK	Round cable set, with two 14-pos. socket strips (1:1 connection), for connecting 8 channels, cable length: 2 m
2297002	FLK 14/EZ-DR/ 200/KONFEK/S	Assembled shielded round cable, with two 14-pos. female connectors (1:1 connection), for connecting 8 channels, length: 2 m
2288943	FLK 14/EZ-DR/ 250/KONFEK	Round cable set, with two 14-pos. socket strips (1:1 connection), for connecting 8 channels, cable length: 2.5 m
2288956	FLK 14/EZ-DR/ 300/KONFEK	Round cable set, with two 14-pos. socket strips (1:1 connection), for connecting 8 channels, cable length: 3 m
2299013	FLK 14/EZ-DR/ 300/KONFEK/S	Assembled shielded round cable, with two 14-pos. female connectors (1:1 connection), for connecting 8 channels, length: 3 m
2288969	FLK 14/EZ-DR/ 350/KONFEK	Round cable set, with two 14-pos. socket strips (1:1 connection), for connecting 8 channels, cable length: 3.5 m
2288972	FLK 14/EZ-DR/ 400/KONFEK	Round cable set, with two 14-pos. socket strips (1:1 connection), for connecting 8 channels, cable length: 4 m
2299026	FLK 14/EZ-DR/ 400/KONFEK/S	Assembled shielded round cable, with two 14-pos. female connectors (1:1 connection), for connecting 8 channels, length: 4 m
2290847	FLK 14/EZ-DR/ 450/KONFEK	Round cable set, with two 14-pos. socket strips (1:1 connection), for connecting 8 channels, cable length: 4,5 m
2290834	FLK 14/EZ-DR/ 500/KONFEK	Round cable set, with two 14-pos. socket strips (1:1 connection), for connecting 8 channels, cable length: 5 m

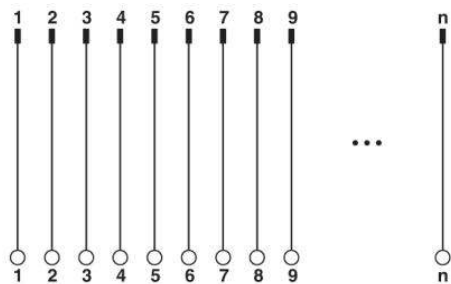
2290850	FLK 14/EZ-DR/ 550/KONFEK	Round cable set, with two 14-pos. socket strips (1:1 connection), for connecting 8 channels, cable length: 5,5 m
2290863	FLK 14/EZ-DR/ 600/KONFEK	Round cable set, with two 14-pos. socket strips (1:1 connection), for connecting 8 channels, cable length: 6 m
2299039	FLK 14/EZ-DR/ 600/KONFEK/S	Assembled shielded round cable, with two 14-pos. female connectors (1:1 connection), for connecting 8 channels, length: 6 m
2299563	FLK 14/EZ-DR/ 800/KONFEK	Round cable set, with two 14-pos. socket strips (1:1 connection), for connecting 8 channels, cable length: 8 m
2299042	FLK 14/EZ-DR/ 800/KONFEK/S	Assembled shielded round cable, with two 14-pos. female connectors (1:1 connection), for connecting 8 channels, length: 8 m
2299576	FLK 14/EZ-DR/1000/KONFEK	Round cable set, with two 14-pos. socket strips (1:1 connection), for connecting 8 channels, cable length: 10 m
2299055	FLK 14/EZ-DR/1000/KONFEK/S	Assembled shielded round cable, with two 14-pos. female connectors (1:1 connection), for connecting 8 channels, length: 10 m
2295046	FLK EZ-DR-S.../.../...	Round cable, with preassembly, shielded, variable cable length
2295059	FLK EZ-DR.../.../...	Round cable, with preassembly, not shielded, variable cable length

**Tools**

1204504	SZF 0-0,4X2,5	Actuation tool, for ST terminal blocks, also suitable for use as a bladed screwdriver, size: 0.4 x 2.5 x 75 mm, 2-component grip, with non-slip grip
---------	---------------	--

**Diagrams/Drawings**

Circuit diagram



**Address**

PHOENIX CONTACT Deutschland GmbH  
Flachmarktstr. 8  
32825 Blomberg, Germany  
Phone +49 5235 3 12000  
Fax +49 5235 3 41200  
<http://www.phoenixcontact.de>



© 2011 Phoenix Contact  
Technical modifications reserved;