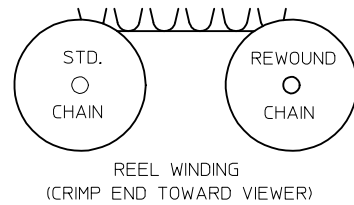
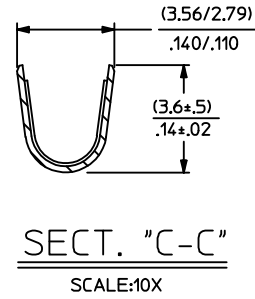
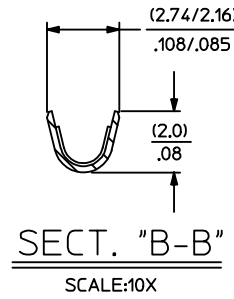
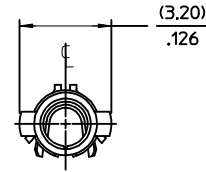
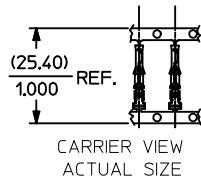


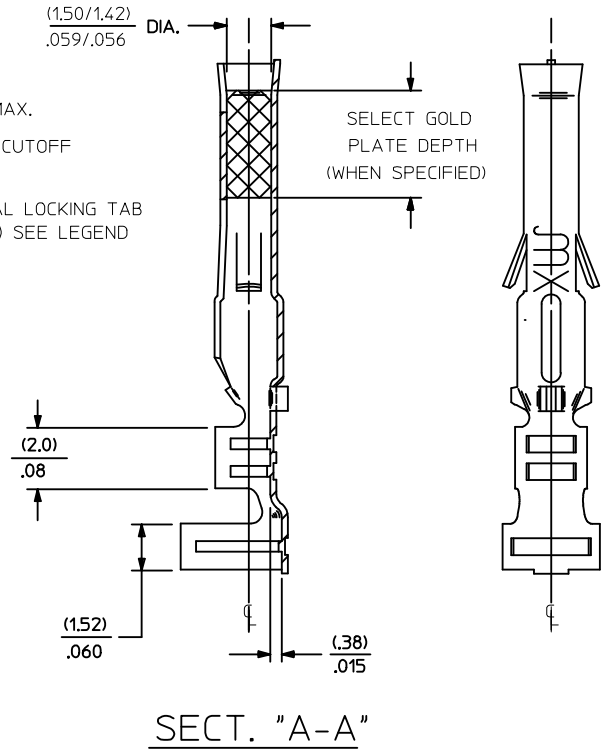
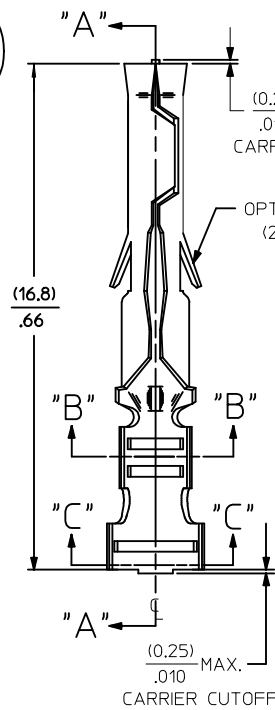
PART NO.	ENG. NO.
02-06-1104	4529-(P901)
02-06-1105	4529-(P901)L
02-06-5117	4529-(P231)
02-06-5118	4529-(P231)L
NOT TOOLED	4529-1(P901)L



LEGEND

4529-*(****)*

- BLANK = WITH LOCKING TABS
- 1=WITHOUT LOCKING TABS
- P=PREPLATE
- BLANK=POSTPLATE
- FINISH CODE
- FORM
- BLANK=STD. CHAIN
- A=REWOUND CHAIN
- L=LOOSE



- NOTES:
- MATERIAL: PHOSPHOR BRONZE
 - FINISH:
 - 901 HOT TIN DIP (.00051)/.000020 MIN.
 - 231 SELECT GOLD PLATE (.00125)/.000050 MIN. IN CONTACT AREA, SELECT TIN. (.00250)/.000100 MIN. IN CRIMP AREA OVER(.00125)/.000050 MIN. NICKEL OVERALL.
 - PRODUCT SPECIFICATION: PS-02-06
 - PACKAGING SPECIFICATION: NOT AVAILABLE
 - TERMINALS FOR USE WITH (1.57)/.062 DIA. SERIES HOUSINGS AND WILL ACCEPT 18 THRU 24 AWG WIRE WITH (1.52/3.05)/.060/.120 INSULATION DIA.

REVISE NOTE 2 EC NO: UCP2015-0104 DRWN: JDFOX 2014/07/11 CHKD: HKIPPER 2014/07/11 APPR: FSM/TH 2014/07/31	QUALITY SYMBOLS	GENERAL TOLERANCES (UNLESS SPECIFIED)		DIMENSION STYLE	SCALE	DESIGN UNITS	THIRD ANGLE PROJECTION	
	▽=0	mm	INCH	IN/MM	8:1	INCH		
	▽=0	4 PLACES ± --- ± ---	3 PLACES ± --- ± .005	DRAWN BY	DATE	TITLE		
	▽=0	2 PLACES ± 0.13 ± .010	1 PLACE ± 0.25 ± ---	CHECKED BY	DATE	CRIMP TERMINAL, FEMALE .062 DIA., PHOS. BRONZE FOR 18 THRU 24 GA. WIRE		
	0 PLACE ± ±	ANGULAR ±1/2°		APPROVED BY	DATE	molex		
		DRAFT WHERE APPLICABLE MUST REMAIN WITHIN DIMENSIONS		MATERIAL NO.	DOCUMENT NO.	SHEET NO.		
				SEE CHART		SD-4529-* 1 OF 1		
		THIS DRAWING CONTAINS INFORMATION THAT IS PROPRIETARY TO MOLEX INCORPORATED AND SHOULD NOT BE USED WITHOUT WRITTEN PERMISSION						