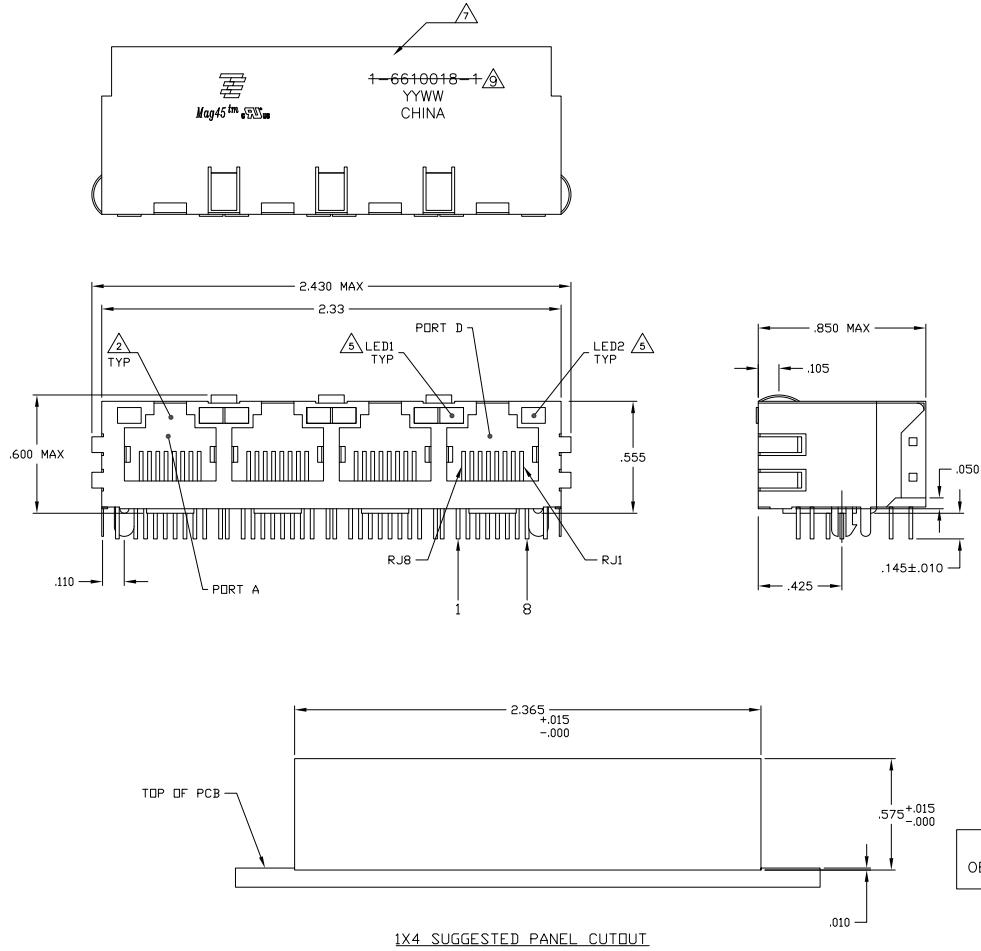


REV	DATE	DESCRIPTION	BY	CHK
AA	22			
B		REV PER ECO-34-42822	DAW3206	DC TX
B1		REVISED PER ECO-08-024927	11N0909	KK AEG

MECHANICAL:



- 1 MATERIALS:**
 -HOUSING - THERMOPLASTIC PET POLYESTER FLAMMABILITY RATING UL 94V-0.
 -SHIELD - .010" THICK, C26890 BRASS PREPLATED WITH 30UNCH MIN SEMI-BRIGHT NICKEL.
 -SOLDER TABS POST DIPPED WITH 100UNCH MIN SAC SOLDER.
 -MOD JACK CONTACTS - 0.0157 X 0.018" PHOSPHOR BRONZE, .50UNCH MIN OVERALL NICKEL UNDERPLATE WITH SELECT .50UNCH MIN HARD GOLD FINISH PLATE. SOLDER TAILS WITH 100UNCH MIN MATE TIN AND/OR SAC SOLDER DIP.
 -LIGHT EMITTING DIODE(LED) - DIFFUSED EPOXY LENS, .020" X .020" CARBON STEEL WIREFRAME LEADS PRE-PLATED WITH 80UNCH SILVER OVER .40UNCH NICKEL UNDERPLATE OVER .40UNCH COPPER UNDERPLATE. POST-PLATED WITH 100UNCH MATE TIN AND/OR SAC SOLDER DIP OR PURE TIN SOLDER DIP.
- 2 RJ45 JACK CAVITY CONFORMS TO FCC RULES AND REGULATIONS PART 68, SUB PART F.**
- 3 MAGNETICS**
 -IMPEDANCE: 100 OHMS
 -TURNS RATIO (CHP CABLE): TX = 11, RX = 11
 -OPEN CIRCUIT INDUCTANCE (OCL): 350nH MIN @100MHz, 0.1Vrms,
 8nADC BIAS FROM 0°C TO 70°C, TX AND RX
 -PERFORMANCE @ 25°C:
 INSERTION LOSS (IL): 1.5dB MAX FROM 0.5MHz TO 100MHz
 RETURN LOSS (RL): 18dB MIN FROM 0.5MHz TO 30MHz
 10-20LOG(I)/30dB MIN FROM 30 MHz TO 60MHz
 30dB MIN FROM 60 MHz TO 80MHz
 CROSSTALK ATTENUATION: 35dB MIN FROM 0.5MHz TO 40MHz
 33-20-LOG(I)/50dB MIN FROM 4.0MHz TO 100MHz
 COMMON MODE REJECTION RATIO (CMRR): 30dB MIN FROM 0.5MHz TO 100MHz
 -ISOLATION VOLTAGE: COMPLIES WITH IEEE802.3 2002, PARA 23.5.1.1, ITEM b.
- 4. TEMPERATURE: FROM 0° TO +70°C**
- 5 THE 250 OHM LED RESISTORS ARE OPTIONAL. PLEASE SEE CHART FOR PRESENCE OR ABSENCE OF LED RESISTORS. IF THE LED WITHOUT 250 OHM RESISTORS, LED IS DRIVEN WITH CONSTANT CURRENT AT APPROX 20mA.**
 LED COLOR/DOMINANT WAVELENGTH(GREEN 568nm TYP. AT IF=20mA
 LED COLOR/DOMINANT WAVELENGTH(YELLOW 588nm TYP. AT IF=20mA
 FORWARD VOLTAGE (VF): GREEN 2.2V TYP. AT IF=20mA
 DOMINANT WAVELENGTH(YELLOW 588nm TYP. AT IF=20mA
 FORWARD VOLTAGE (VF): YELLOW 2.1V TYP. AT IF=20mA
 IF THE LED WITH 250 OHM RESISTORS, LED IS DRIVEN WITH 5V VOLTAGE AND THE MAX OPERATING CURRENT IS 20mA.
 LED COLOR/DOMINANT WAVELENGTH(GREEN 568nm TYP. AT VF=5V
 FORWARD CURRENT (IF): GREEN 12 mA TYP. AT VF=5V
 DOMINANT WAVELENGTH (YELLOW 588nm TYP. AT VF=5V
 FORWARD CURRENT (IF): YELLOW 13 mA TYP. AT VF=5V
- 6 INDICATED CONNECTIONS ARE FOR NIC CONFIGURATION. THE MAGNETICS ARE ASYMMETRICAL AND DO NOT SUPPORT AUTO-INDUCTION.**
- 7 TYCO ELECTRONICS LOGO, PART NUMBER, DATE CODE, COUNTRY OF ORIGIN AND AGENCY APPROVAL MARKING IS APPROXIMATE LOCATION SHOWN.**
- 8. THESE PARTS ARE RECOMMENDED FOR WAVE SOLDERING PROCESS. PREHEAT TEMPERATURE IS 120°C TO 160°C, 100 SECONDS TO 180 SECONDS, PEAK WAVE SOLDERING TEMPERATURE IS 260°C MAX, 10 SECONDS MAX.**
- 9 OBSOLETE PARTS: OBSOLETE (S) STREAMLINING PER D.BENAUD/D.SINISI**

OBSOLETE

NO	NO	YES	GREEN	GREEN	5-6610018-7
NO	NO	YES	GREEN/YELLOW	GREEN/YELLOW	5-6610018-6
YES	YES	YES	GREEN	YELLOW	5-6610018-1
YES	YES	NO	GREEN	GREEN	4-6610018-1
NO	NO	NO	GREEN/YELLOW	GREEN	6610018-5

LED1 RESISTOR R1V DECOUPLING CAPACITOR LED1 LED2 PART NUMBER

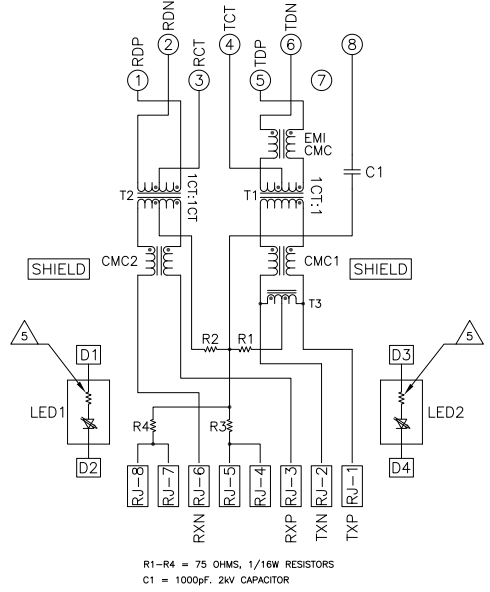
THIS DRAWING IS A CONTROLLED DOCUMENT. SEE THE DRAWING FOR THE LATEST REVISIONS. THIS DRAWING IS THE PROPERTY OF TYCO ELECTRONICS CORPORATION. IT IS TO BE USED ONLY FOR THE PURPOSES AND IN THE QUANTITIES SPECIFIED IN THE ORDER. IT IS NOT TO BE REPRODUCED OR TRANSMITTED IN ANY FORM OR BY ANY MEANS, ELECTRONIC OR MECHANICAL, INCLUDING PHOTOCOPYING, RECORDING, OR BY ANY INFORMATION STORAGE AND RETRIEVAL SYSTEM, WITHOUT THE WRITTEN PERMISSION OF TYCO ELECTRONICS CORPORATION.

DATE: 06/19/08
 DRAWN BY: A1
 CHECKED BY: 06610018
 REVISED BY: 06610018

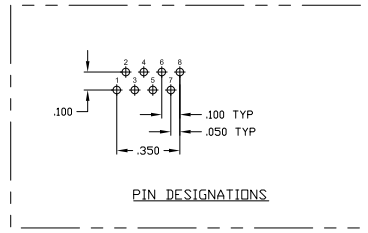
THIS DRAWING IS UNPUBLISHED
 ALL RIGHTS RESERVED
 © 2008 TYS ELECTRONICS CORPORATION

REV	DATE	DESCRIPTION	BY	CHK	APP
AA	22	SEE SHEET 1			

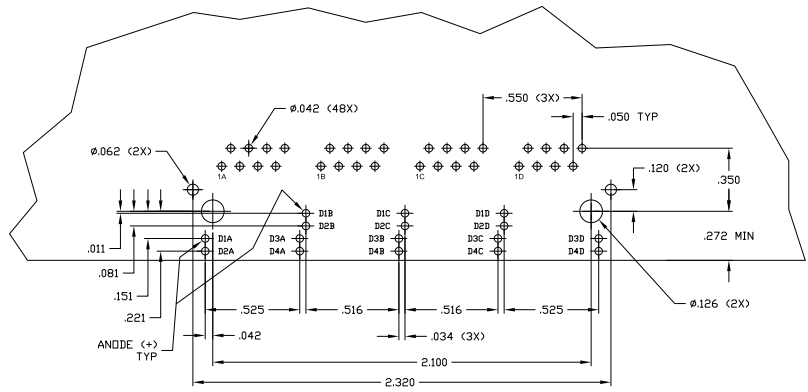
717 SERIES MAGNETIC CIRCUIT



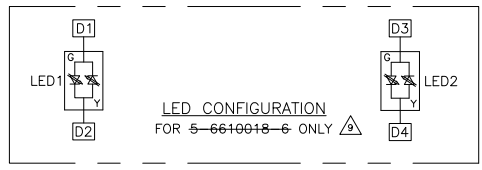
R1-R4 = 75 OHMS, 1/16W RESISTORS
 C1 = 1000pF, 2KV CAPACITOR



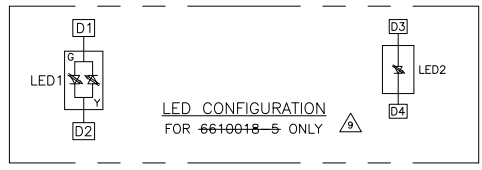
PIN DESIGNATIONS



SUGGESTED PCB LAYOUT



LED CONFIGURATION
 FOR 5-6610018-6 ONLY



LED CONFIGURATION
 FOR 6610018-5 ONLY

THIS DRAWING IS A CONTROLLED DOCUMENT.		TYS ELECTRONICS CORPORATION ChangPing, China	
REVISIONS	DATE	BY	CHK
1	108-2100		
2	108-2100		
3	108-2100		
4	108-2100		
5	108-2100		
6	108-2100		
7	108-2100		
8	108-2100		
9	108-2100		
10	108-2100		
11	108-2100		
12	108-2100		
13	108-2100		
14	108-2100		
15	108-2100		
16	108-2100		
17	108-2100		
18	108-2100		
19	108-2100		
20	108-2100		
21	108-2100		
22	108-2100		
23	108-2100		
24	108-2100		
25	108-2100		
26	108-2100		
27	108-2100		
28	108-2100		
29	108-2100		
30	108-2100		
31	108-2100		
32	108-2100		
33	108-2100		
34	108-2100		
35	108-2100		
36	108-2100		
37	108-2100		
38	108-2100		
39	108-2100		
40	108-2100		
41	108-2100		
42	108-2100		
43	108-2100		
44	108-2100		
45	108-2100		
46	108-2100		
47	108-2100		
48	108-2100		
49	108-2100		
50	108-2100		
51	108-2100		
52	108-2100		
53	108-2100		
54	108-2100		
55	108-2100		
56	108-2100		
57	108-2100		
58	108-2100		
59	108-2100		
60	108-2100		
61	108-2100		
62	108-2100		
63	108-2100		
64	108-2100		
65	108-2100		
66	108-2100		
67	108-2100		
68	108-2100		
69	108-2100		
70	108-2100		
71	108-2100		
72	108-2100		
73	108-2100		
74	108-2100		
75	108-2100		
76	108-2100		
77	108-2100		
78	108-2100		
79	108-2100		
80	108-2100		
81	108-2100		
82	108-2100		
83	108-2100		
84	108-2100		
85	108-2100		
86	108-2100		
87	108-2100		
88	108-2100		
89	108-2100		
90	108-2100		
91	108-2100		
92	108-2100		
93	108-2100		
94	108-2100		
95	108-2100		
96	108-2100		
97	108-2100		
98	108-2100		
99	108-2100		
100	108-2100		