

MATERIALS & SPECIFICATIONS

PART NO.	A 79113-001	REV	ECO	DATE	APP
		D	98556	05-18-12	TLM

INSULATOR MATERIAL:

THERMOPLASTIC POLYMER PER MIL-DTL-32139

CONTACT MATERIAL:

COPPER ALLOY PER MIL-DTL-32139. GOLD PLATED PER ASTM B488, (HARD GOLD) TYPE II CODE C CLASS 1.27

TERMINATION:

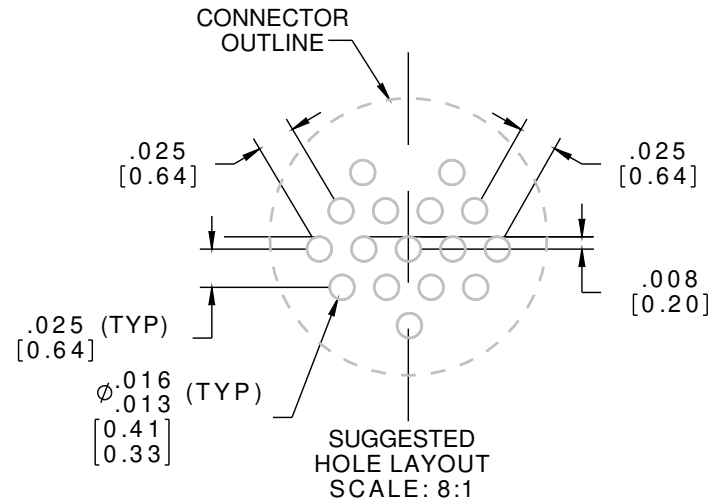
GOLD PLATED PER ASTM B488, (HARD GOLD) TYPE II CODE C CLASS 1.27

CURRENT CAPACITY:

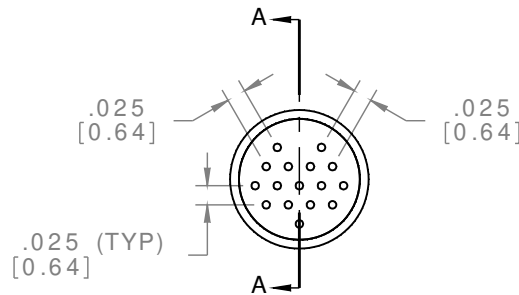
1 AMP MAX PER MIL-DTL-32139

CONTACT RESISTANCE:

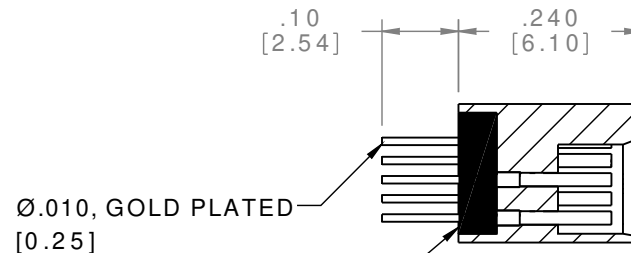
71 MILLIOHMS (71 mV) MAX @ 1.0 AMPS PER MIL-DTL-32139



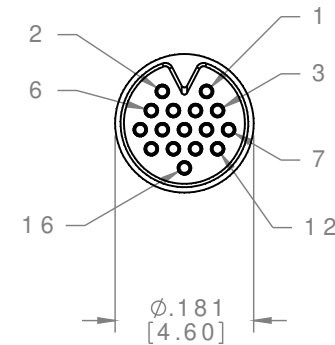
ACTUAL SIZE



LOADING VIEW
LESS EPOXY



SECTION A-A
EPOXY FLUSH TO UNDERFLUSH



RoHS

NCS SLDW	THIRD ANGLE	THIS DRAWING CONTAINS CONFIDENTIAL AND PROPRIETARY INFORMATION WHICH IS THE PROPERTY OF OMNETICS CONNECTOR CORP. THIS DOCUMENT MAY NOT, IN WHOLE OR IN PART, BE DUPLICATED, OR DISCLOSED FOR ANY PURPOSE, WITHOUT WRITTEN PERMISSION FROM OMNETICS CONNECTOR CORP.		 OMNETICS CONNECTOR CORPORATION 7260 COMMERCE CIRCLE EAST MINNEAPOLIS, MN 55432 WWW.OMNETICS.COM	CAGE CODE 61873		
	-TOLERANCES- UNLESS OTHERWISE NOTED DIMENSIONS IN INCHES	DFTM. ACM	DATE 01-22-09		TITLE:	DWG NO. A79113-001	
	2 PL DEC ± .01 3 PL DEC ± .005 4 PL DEC ± .0005 ANGLES ± 1°	CHK'D.	DATE		(16) SOCKET FEMALE NANO CIRCULAR CONNECTOR	SHEET 1 OF 1	
		APP'D.	DATE			REV D	SCALE: 4:1