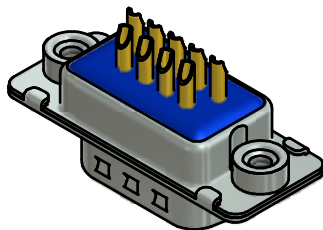


(b)

NOTES:

- METALSHELLS: STEEL; min. 315µm TIN over 40-80µm NICKEL
- INSULATOR: HIGH TEMPERATURE PLASTIC UL 94 V-0; BLACK
- CONTACTS: COPPER ALLOY
PLATING (SEE PART NO.)
□ PLEASE ADD C for 30µm HARD GOLD over min. 50µm NICKEL
□ PLEASE ADD B for 20µm HARD GOLD over min. 50µm NICKEL
□ PLEASE ADD A for GOLD FLASH over NICKEL (PREFERRED TYPE)
SOLDER CUP ACCEPTS CABLE AWG 20
- THREADED INSERTS: COPPER ALLOY; min. 200µm TIN over 80µm NICKEL
- COLLARS: COPPER ALLOY; min. 200µm TIN over 80µm NICKEL
- SEALING COMPOUND: PUR; BLUE
- CAPACITANCE: 1300pF ±20%
- DIELECTRIC WITHSTANDING VOLTAGE: 424 VDC
- MAXIMUM TORQUE VALUE FOR THREAD: 6 in.LB
- CONNECTOR IS PART MARKED: 241□27120X CONEC ABC (see note 4)



Directive 2002/95/EC RoHS compliant

THIS DRAWING MAY NOT BE COPIED OR REPRODUCED IN ANY WAY, AND MAY NOT BE PASSED ON TO A THIRD PARTY WITHOUT WRITTEN PERMISSION. OWNERSHIP AND COPYRIGHT OF CONEC GmbH				tolerance		dim. in mm	scale: 2:1 (5:1)	
				date			material: SEE NOTES	
DO NOT ALTER CAD DRAWING BY HAND				drawn	06.02.06	Lehmenkühler	title: D-SUB FILTER MALE 9pos. SOLDER CUP with threaded insert	
				appd.	06.06.06			
5 x b A4859 31.07.2013 K.H.				norm			dwg no:	
				d-old			24K1A760	
a Original				CONEC®		part no: (b) 241□27120X (see note 4)		sh: 1
rev.	description	date	name					