

2.8 GHz Surface Mount Bandpass Filter

B028RF2S

DESCRIPTION

One of DLI's surface mountable catalog bandpass filters. This filter utilizes DLI's low loss temperature stable materials which offer small size and minimal performance variation over temperature. The catalog BPF's are offered in a variety of frequency bands, which offers a drop in solution with highly repeatable performance.

FEATURES

- Small Size
- Fully Shielded Component
- Solder Surface Mount Package
- Moisture Sensitivity Level: MSL1
- Frequency Stable over Temperature
- Operating & Storage Temp: -55°C to +125°C
- Characteristic Impedance: 50Ω

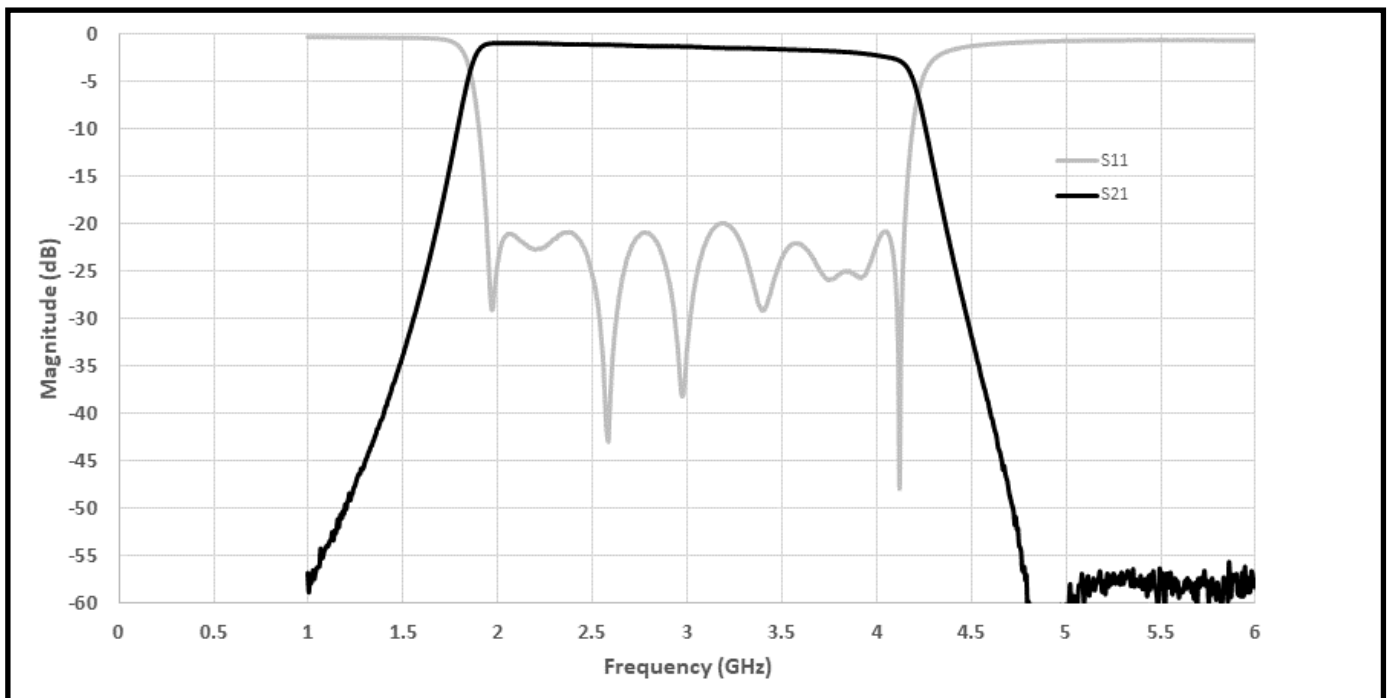
SPECIFICATIONS*

Parameter	Frequency Range (GHz)	Min	Typ.	Max
Insertion Loss (dB)	2.0 - 4.0		2.0	3.5
Return Loss (dB)		10	18	
Low Side Rejection (dB)	DC - 1.25	40	45	
High Side Rejection (dB)	4.75 - 6.0	35	40	
CW Input Power (W)**	2.0 - 4.0			15
$\theta_{JC} \left(\frac{^{\circ}C}{W} \right)$	-		5	
Size (L x W x H)	0.460 x 0.460 x 0.113 in 11.68 x 11.68 x 2.87 mm			

*Electrical specifications based on typical probed performance at room temperature. Insertion loss shall vary ± 0.5 dB over temperature.

**Power rating assumes the component will be mounted to a PCB with good thermally conducting ground via's as outlined in the recommended PCB layout that are connected to an adequate heat sink. Max power is based on 125°C base temperature.

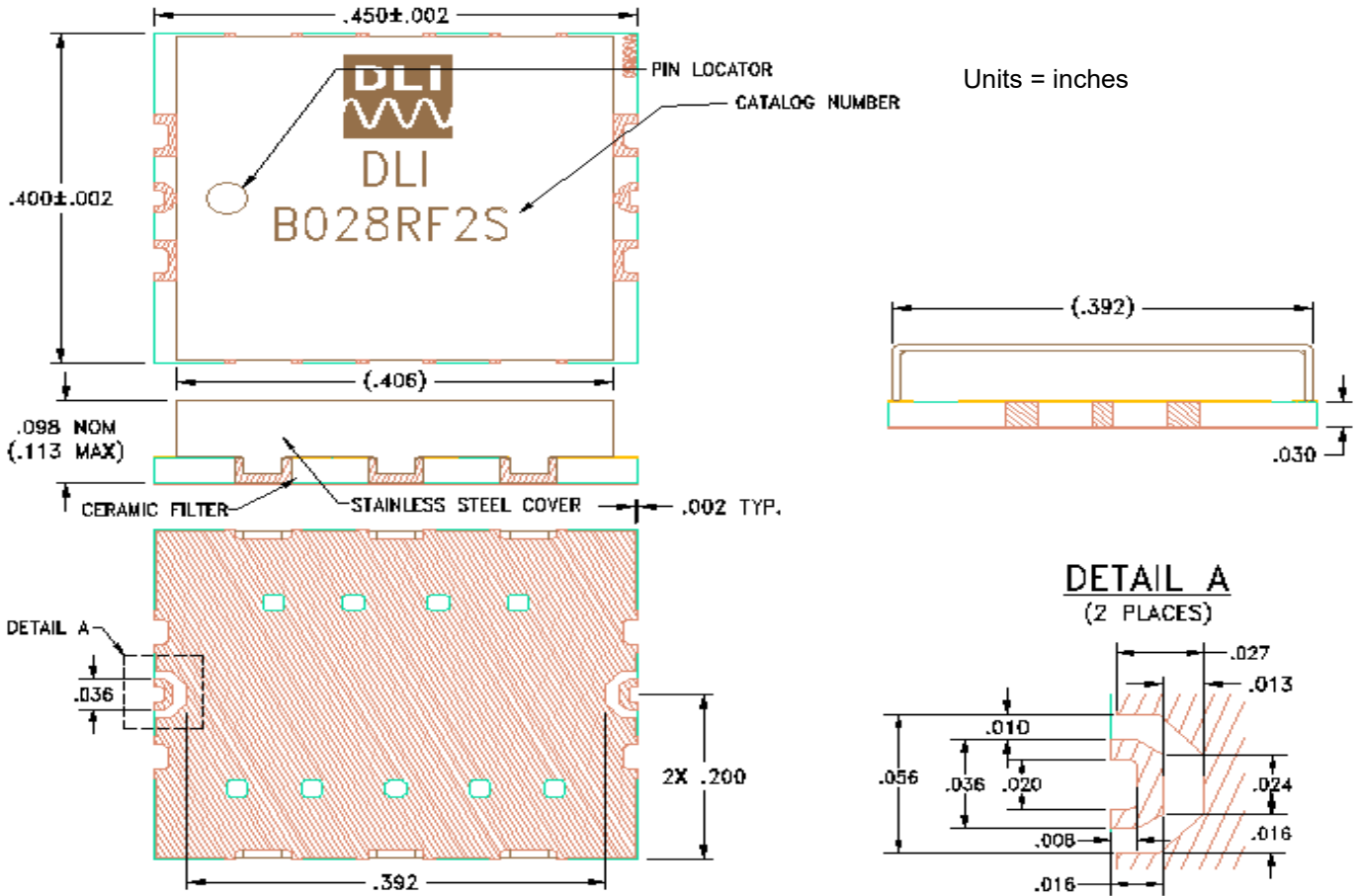
Typical Measured Performance



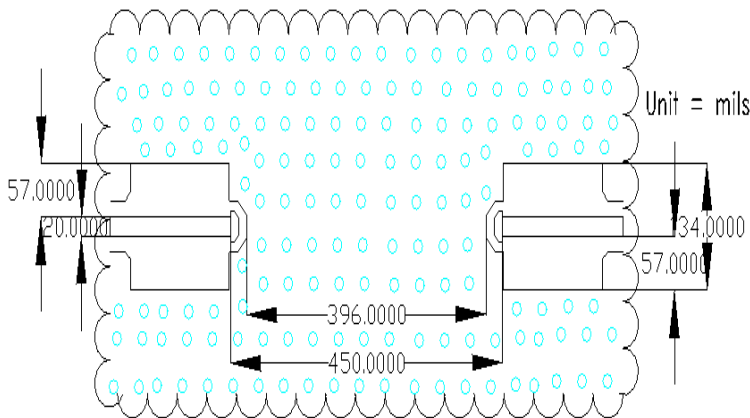
2.8 GHz Surface Mount Bandpass Filter

B028RF2S

Physical Dimensions



Recommended PCB Layout



- 50Ω trace dimensions are application specific.
- Ensure adequate grounding beneath the part.
- If the customer requests tape and reel packaging, the PN requested should be B028RF2S-T

