

This document is the property of Amphenol Corporation and is delivered on the express condition that is not to be disclosed, reproduced or used, in whole or in part, for manufacture or sale by anyone other than Amphenol Corporation without its prior consent, and that no right is granted to disclose or to use any information in this document.

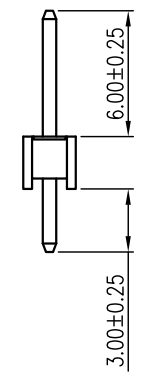
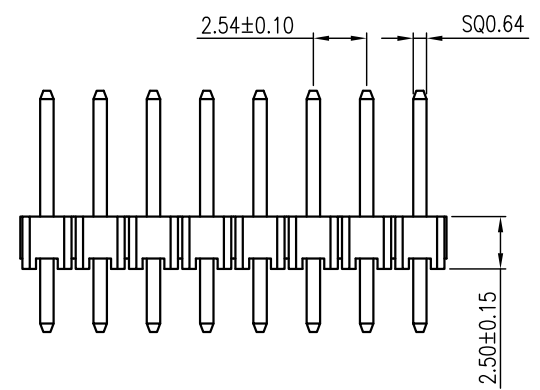
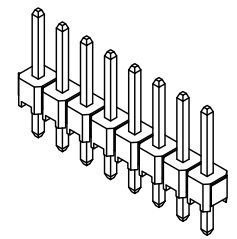
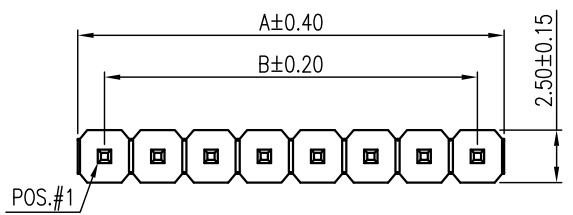
The marking on this product doesn't contain environmental hazardous materials per directive 2011/65/EU & 2015/863/EU for RoHS compliant and per IEC 61249-2-21 for Halogen-Free compliant.

FOR REFERENCE ONLY



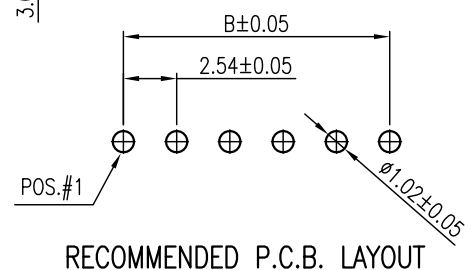
REVISIONS				
SYM	ECN No.	DESCRIPTION	DATE	BY
AX1	EDSR#12564	NON-RELEASE REVISION	10/19/2022	Aqua Chou

G800 LQ 268 XXX HR-297	1 x 40 = 40	101.60	99.06
G800 LQ 269 XXX HR-297	1 x 39 = 39	99.06	96.52
G800 LQ 270 XXX HR-297	1 x 38 = 38	96.52	93.98
G800 LQ 271 XXX HR-297	1 x 37 = 37	93.98	91.44
G800 LQ 272 XXX HR-297	1 x 36 = 36	91.44	88.90
G800 LQ 273 XXX HR-297	1 x 35 = 35	88.90	86.36
G800 LQ 274 XXX HR-297	1 x 34 = 34	86.36	83.82
G800 LQ 275 XXX HR-297	1 x 33 = 33	83.82	81.28
G800 LQ 276 XXX HR-297	1 x 32 = 32	81.28	78.74
G800 LQ 277 XXX HR-297	1 x 31 = 31	78.74	76.20
G800 LQ 278 XXX HR-297	1 x 30 = 30	76.20	73.66
G800 LQ 279 XXX HR-297	1 x 29 = 29	73.66	71.12
G800 LQ 280 XXX HR-297	1 x 28 = 28	71.12	68.58
G800 LQ 281 XXX HR-297	1 x 27 = 27	68.58	66.04
G800 LQ 282 XXX HR-297	1 x 26 = 26	66.04	63.50
G800 LQ 283 XXX HR-297	1 x 25 = 25	63.50	60.96
G800 LQ 284 XXX HR-297	1 x 24 = 24	60.96	58.42
G800 LQ 285 XXX HR-297	1 x 23 = 23	58.42	55.88
G800 LQ 286 XXX HR-297	1 x 22 = 22	55.88	53.34
G800 LQ 287 XXX HR-297	1 x 21 = 21	53.34	50.80
G800 LQ 288 XXX HR-297	1 x 20 = 20	50.80	48.26
G800 LQ 289 XXX HR-297	1 x 19 = 19	48.26	45.72
G800 LQ 290 XXX HR-297	1 x 18 = 18	45.72	43.18
G800 LQ 291 XXX HR-297	1 x 17 = 17	43.18	40.64
G800 LQ 292 XXX HR-297	1 x 16 = 16	40.64	38.10
G800 LQ 293 XXX HR-297	1 x 15 = 15	38.10	35.56
G800 LQ 294 XXX HR-297	1 x 14 = 14	35.56	33.02
G800 LQ 295 XXX HR-297	1 x 13 = 13	33.02	30.48
G800 LQ 296 XXX HR-297	1 x 12 = 12	30.48	27.94
G800 LQ 297 XXX HR-297	1 x 11 = 11	27.94	25.40
G800 LQ 298 XXX HR-297	1 x 10 = 10	25.40	22.86
G800 LQ 299 XXX HR-297	1 x 9 = 9	22.86	20.32
G800 LQ 300 XXX HR-297	1 x 8 = 8	20.32	17.78
G800 LQ 301 XXX HR-297	1 x 7 = 7	17.78	15.24
G800 LQ 302 XXX HR-297	1 x 6 = 6	15.24	12.70
G800 LQ 303 XXX HR-297	1 x 5 = 5	12.70	10.16
G800 LQ 304 XXX HR-297	1 x 4 = 4	10.16	7.62
G800 LQ 305 XXX HR-297	1 x 3 = 3	7.62	5.08
G800 LQ 306 XXX HR-297	1 x 2 = 2	5.08	2.54
PART NUMBER	NO. OF POS.	A	B



NOTES:

- INSULATOR: LCP, UL 94V-0, COLOR- BLACK
- CONTACT: COPPER ALLOY, "XXX"- PIN CONTACT/SOLDER PLATING
 "005"- 15μ" GOLD/GOLD FLASH
 "010"- 30μ" GOLD/GOLD FLASH
 "018"- GOLD FLASH/GOLD FLASH
 "025"- 5μ" GOLD/GOLD FLASH
 "032"- 100μ" MATTE TIN/100μ" MATTE TIN
- THIS PRODUCT DOESN'T CONTAIN ENVIRONMENTAL HAZARDOUS PER DIRECTIVE 2011/65/EU & 2015/863/EU FOR RoHS COMPLIANT. AND PER IEC 61249-2-21 FOR HALOGEN-FREE COMPLIANT.
- PACKING IS PER AMTA PACKING SPECIFICATION PKS-0001
- PRODUCT SPECIFICATION REFER TO : PS-7501



TOLERANCE		APPROVALS		DATE	TITLE		Amphenol®		
X.		DRAWN	Aqua Chou	10/19/2022	G800 SERIES, PCB HEADER 2.54 PITCH, SINGLE ROW STRAIGHT, PCB MOUNT		Amphenol Corporation Amphenol Taiwan Corporation		
X.X	±0.30	CHECKED	Joseph Jiang	10/19/2022					
X.XX	±0.20	APPROVED	Roger Tsai	10/19/2022					
X.XXX	±0.10	DWG TYPE		PROJECT CODE	UNIT mm	SCALE NA	SIZE A3	SHEET 1 OF 2	PART No. G800LQXXXXXXHR-297
ANGULAR	±1°	CUST DWG		HEAD					
UNLESS OTHERWISE SPECIFIED									

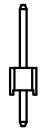
This document is the property of Amphenol Corporation and is delivered on the express condition that is not to be disclosed, reproduced or used, in whole or in part, for manufacture or sale by anyone other than Amphenol Corporation without its prior consent, and that no right is granted to disclose or to use any information in this document.

The marking on this product doesn't contain environmental hazardous materials per directive 2011/65/EU & 2015/863/EU for RoHS compliant and per IEC 61249-2-21 for Halogen-Free compliant.

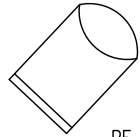
FOR REFERENCE ONLY



REVISIONS				
SYM	ECN No.	DESCRIPTION	DATE	BY
AX1	EDSR#12564	NON-RELEASE REVISION	10/19/2022	Aqua Chou

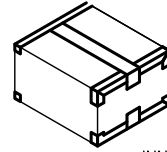


DESICCANT



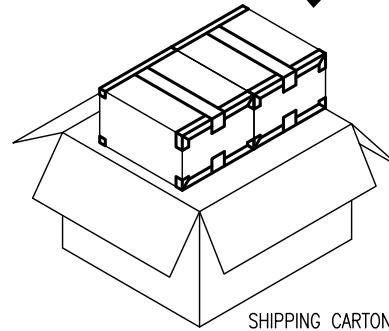
No:1

PE BAG



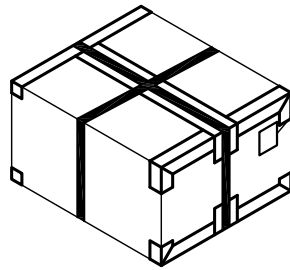
No:2

INNER BOX



No:3

SHIPPING CARTON



No:4

LABEL

NOTES:

1. INNER BOX SIZE : 215 X 175 X 150 mm
2. SHIPPING CARTON SIZE : 370 X 230 X 175 mm

1x8=8	1000	6	2	12,000	5.4	5.7
1x6=6	1000	6	2	12,000	4.2	4.6
1x5=5	2000	5	2	20,000	5.8	6.6
1x4=4	2000	5	2	20,000	4.6	5.3
1x3=3	2000	6	2	24,000	3.8	4.6
1x2=2	2000	15	2	60,000	7.2	8.0
POS.	PCS/ BAG	BAG/ INNER BOX	INNER BOX/ SHIPPING CARTON	QUANTITY (PCS)	N.W. KG	G.W. KG

TOLERANCE	APPROVALS	DATE	TITLE		PART No.		
X. X.X ±0.30 X.XX ±0.20 X.XXX ±0.10	DRAWN Aqua Chou	10/19/2022	G800 SERIES, PCB HEADER 2.54 PITCH, SINGLE ROW STRAIGHT, PCB MOUNT		Amphenol® Amphenol Corporation Amphenol Taiwan Corporation		
ANGULAR ±1°	CHECKED Joseph Jiang	10/19/2022		UNIT mm	SIZE A3	G800LQXXXXXXHR-297	
UNLESS OTHERWISE SPECIFIED	APPROVED Roger Tsai	10/19/2022		SCALE NA	SHEET 2 OF 2	DWG No.	REV.
	DWG TYPE CUST DWG	PROJECT CODE HEAD				G800LQXXXXXXHR-297	AX1