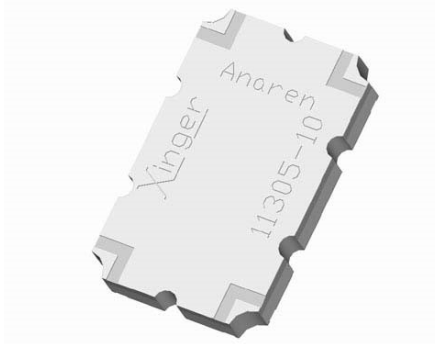




**Directional Couplers
10 dB**

Description:

The 11305-10 is a low profile 10dB directional coupler in an easy to use surface mount package covering 1.0 to 2.0 GHz. The 11305-10 is ideal for power and frequency detection as well as power injection and can be used in most high power designs. Parts have been subjected to rigorous qualification testing and units are 100% tested. They are manufactured using materials with x and y thermal expansion coefficients compatible with common substrates such as FR4, G-10 and polyamide.



Detailed Electrical Specifications:

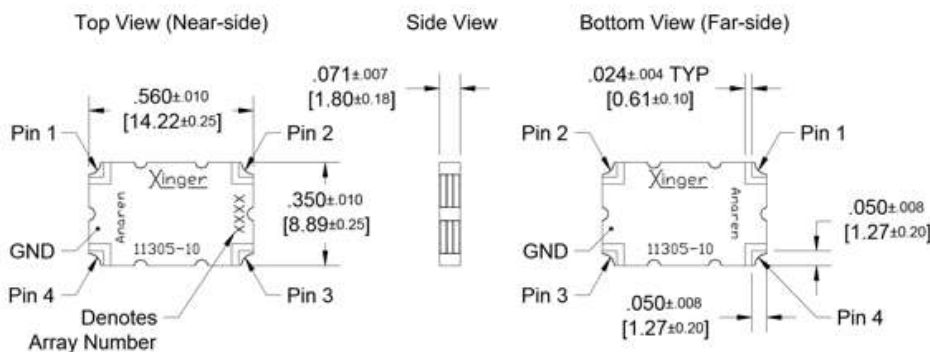
Features:

- 1.0 – 2.0 GHz
- Low Loss
- High Directivity*
- Surface Mountable
- Tape And Reel
- Convenient Package
- 100% Tested

Frequency	Mean Coupling	Insertion Loss	VSWR
GHz	dB	dB Max	Max : 1
1.0 – 2.0	10.0 ± 0.8	0.35	1.22
Freq. Sensitivity	Directivity	Power Handling	Operating Temp.
dB Max	dB Min	Avg. CW Watts @85°C	°C
± 0.80	18	60	-55 to +150

**Specification based on performance of unit properly installed on microstrip printed circuit boards with 50 Ω nominal impedance.
*Specifications subject to change without notice.

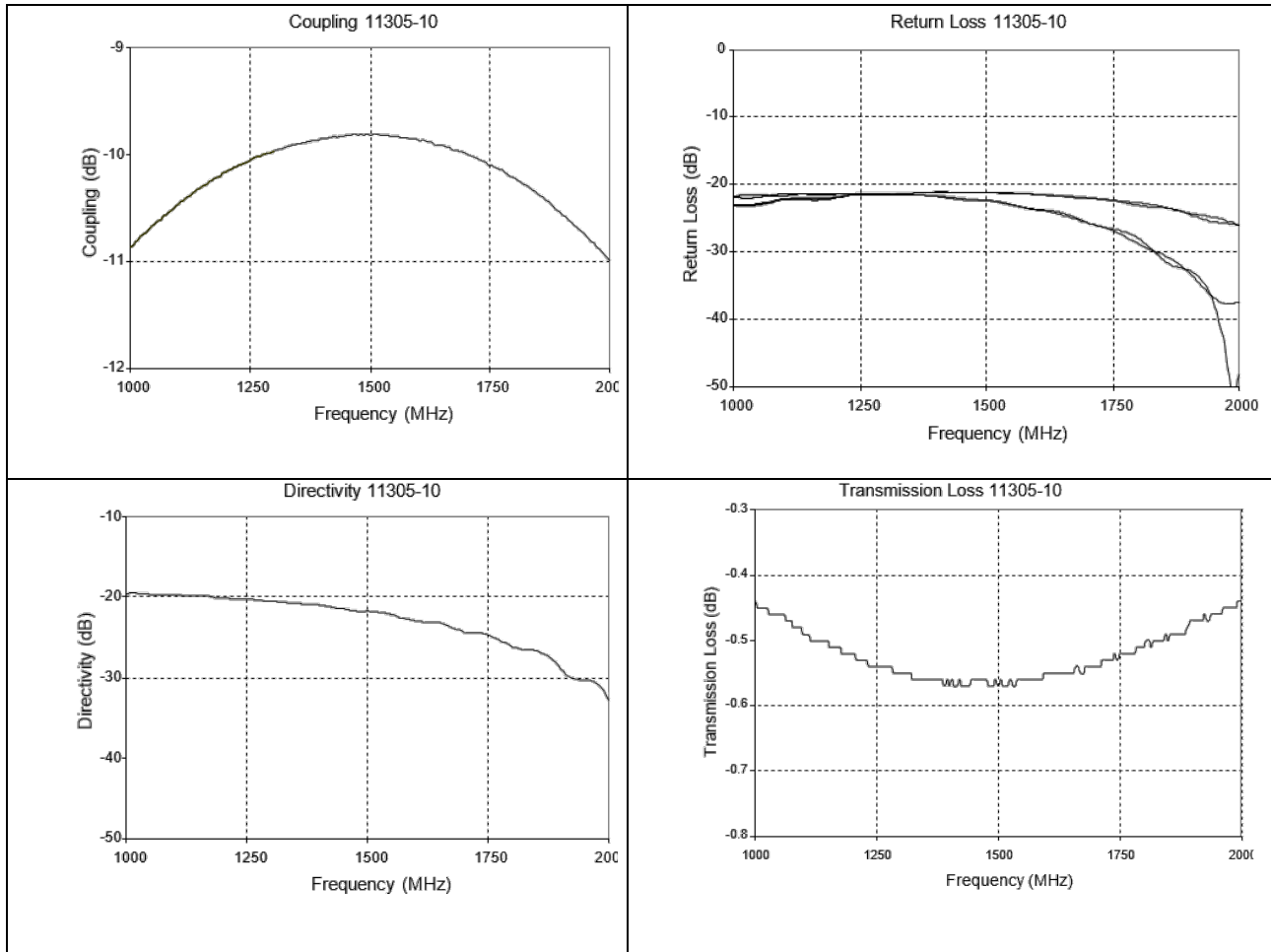
Outline Drawing:



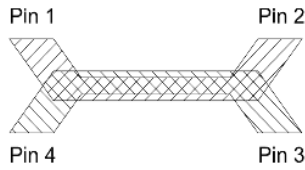
Dimensions are in Inches [Millimeters]
11305-10 Rev A Mechanical Outline

Part Is Symmetric About All Axis

Typical Performance: 1.0 GHz. to 2.0 GHz.



Pin Configuration

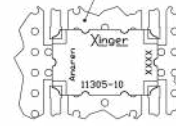


Directional Coupler Pin Configuration

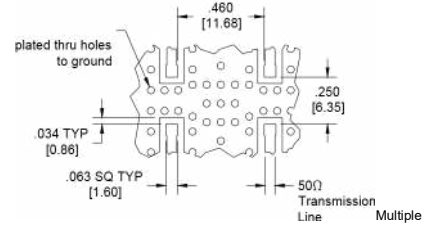
	Pin 1	Pin 2	Pin 3	Pin 4
Configuration #1	Input	Output	Isolated	Coupled
Configuration #2	Output	Input	Coupled	Isolated
Configuration #3	Isolated	Coupled	Input	Output
Configuration #4	Coupled	Isolated	Output	Input

Mounting Footprint

To ensure proper electrical and thermal performance there must be a ground plane with 100% solder connection underneath the part



Part is Symmetric About All Axis



Dimensions are in Inches
[Millimeters] 11305-10 Rev A
Mounting Footprint

Contact us:

rf&s_support@ttm.com