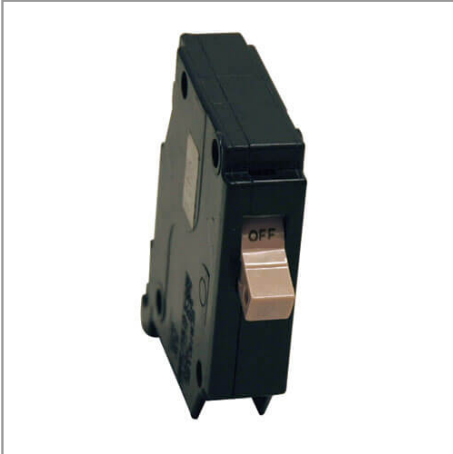


## 120V 20A Single Phase Circuit Breaker for Rack Distribution Cabinet Applications

MODEL NUMBER: **SUBB120**



### Highlights

- Circuit breaker for SUDC208VP distribution cabinet applications
- Single Phase Cutler Hammer 120V 20A Single Pole

### Description

Cutler Hammer single phase 120V 20A single pole circuit breaker for use with Tripp Lite SUDC208VP rack distribution cabinet.

### Features

- Cutler Hammer single phase 120V 20A single pole circuit breaker
- For use with Tripp Lite SUDC208VP rack distribution cabinet

## Specifications

OVERVIEW	
UPC Code	037332156396
Accessory Type	Circuit Breaker
Accessory Class	PDU Accessories
INPUT	
Rated input current (Maximum Load)	20A
Nominal Input Voltage(s) Supported	120V AC
PHYSICAL	
Shipping Dimensions (hwd / in.)	9.00 x 7.00 x 0.75
Shipping Dimensions (hwd / cm)	22.86 x 17.78 x 1.90
Shipping Weight (lbs.)	0.30

Shipping Weight (kg)	0.14
Unit Dimensions (hwd / in.)	3.250 x 3.250 x 0.750
Unit Dimensions (hwd / cm)	8.3 x 8.3 x 1.9
Unit Weight (lbs.)	.225
Unit Weight (kg)	0.10
<b>WARRANTY &amp; SUPPORT</b>	
Product Warranty Period (Worldwide)	1-year limited warranty