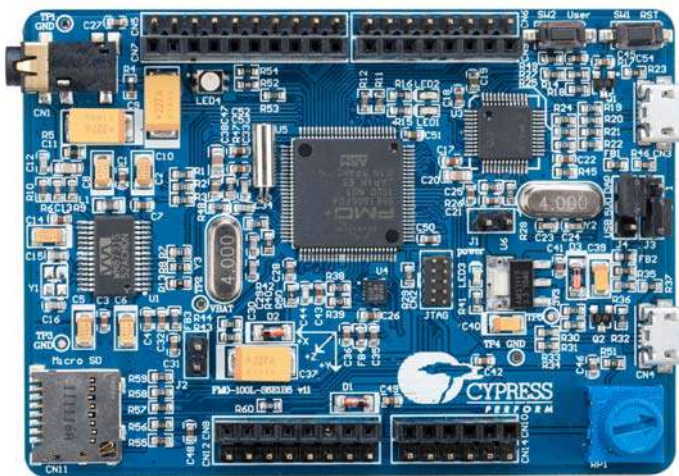




FM0-100L-S6E1B8 - ARM® Cortex®-M0+ MCU Starter Kit with USB and SD Card Interface

Last Updated: Nov 30, 2015

Version: **



The FM0-100L-S6E1B8 MCU Starter Kit is a low cost development platform for Cypress's FM0+ S6E1B-Series, a Flexible Microcontroller family with an ultra-low-power 32-bit ARM® Cortex®-M0+ CPU. This kit enables rapid development of embedded systems with onboard interfaces including USB, micro SD Card and an Arduino™ Uno-compatible form-factor to prototype with Arduino shields.

Coming Soon in December 2015!

Featuring the FM0+ S6E1B-Series: ARM® Cortex-M0+ MCU

- 40MHz ARM® Cortex-M0+ MCU with 64-channel DMA
- 560KB flash, 64KB SRAM and 82 GPIOs
- High efficiency 52µA/CoreMark® Score
- Ultra-low-power consumption: Active - 65µA/MHz and Standby - 0.6µA
- Advanced peripherals: USB host and device, AES Encryption, HDMI-CEC and 8x Serial Interfaces

Flexible Arduino Uno Form-factor with Onboard sensors and CMSIS-DAP Debugger

- Arduino Uno form-factor to prototype with shields
- Includes onboard accelerometer, SD card interface, stereo codec, potentiometer and an RGB LED
- ARM® CMSIS-DAP interface for programming and debugging of the S6E1B8 device

Kit Contents:

- FM0+ S6E1B-Series Starter Board
- USB Standard-A to Micro-B cable
- Quick Start Guide