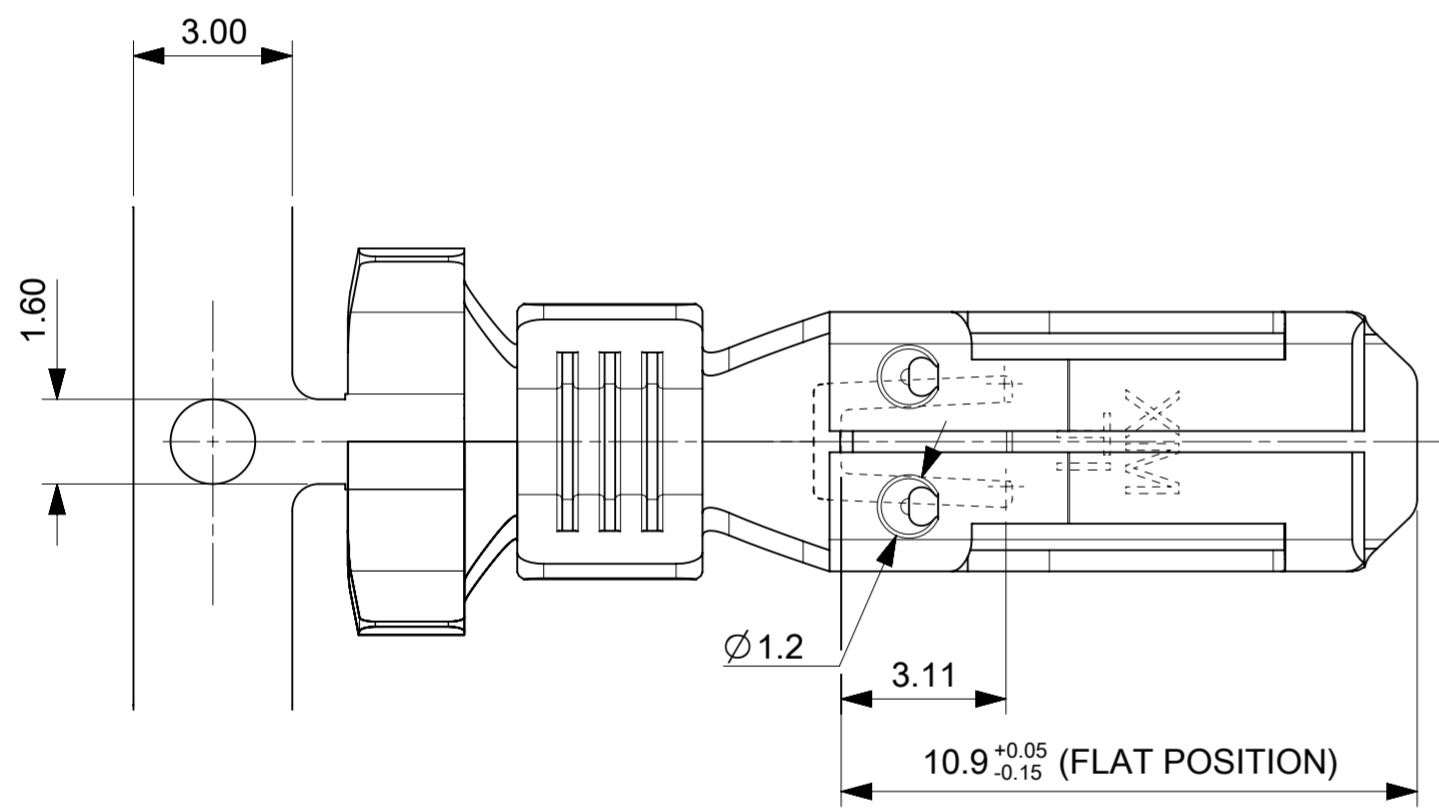


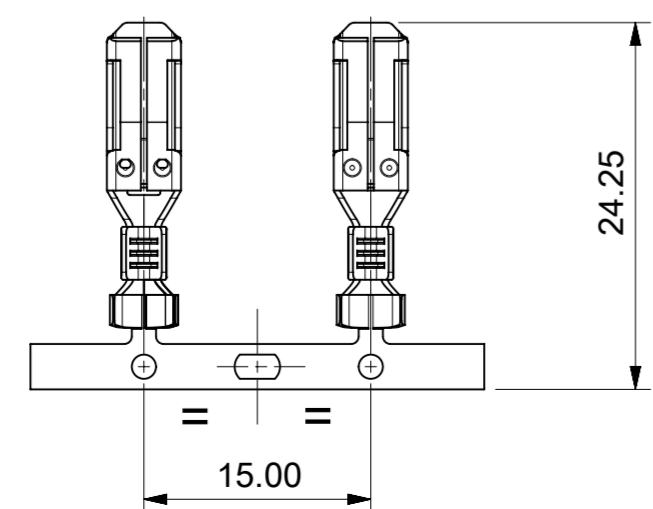
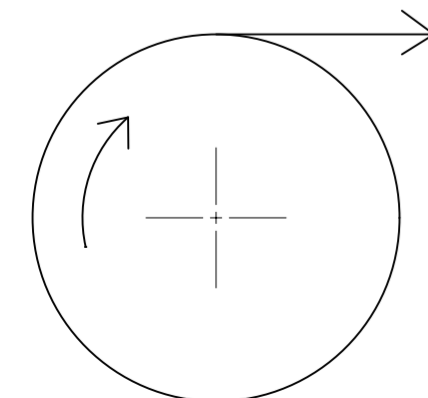
SECTION A-A

SECTION B-B



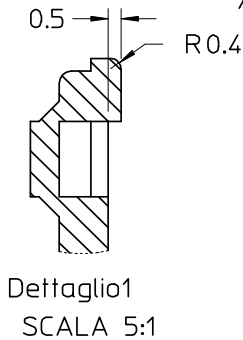
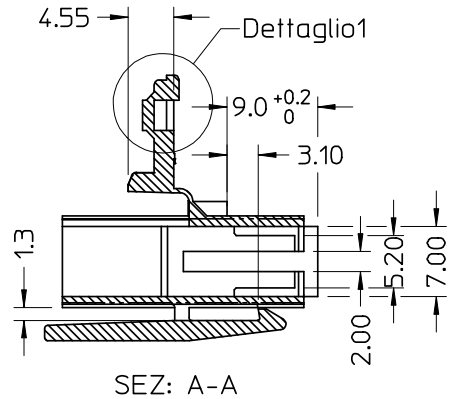
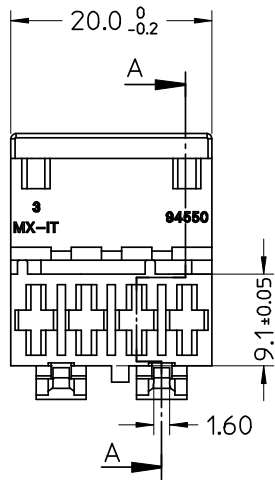
P/N	PLATING	MATERIAL	WIRE RANGE	INS. RANGE	DIMENSION				
					A	B	C	D	E
94518-0100	PLAIN	BRASS	0.5 - 1.0	2.2 - 2.8	4.5	4.5	3.0	3.0	/
94518-0101	TIN								
94518-0200	PLAIN	BRASS	1.0 - 2.5 FOR SINGLE DOUBLE CABLES	2.6 - 3.8	5.5	5.5	4.1	4.3	/
94518-0201	TIN								
94518-0400	PLAIN	BRASS	1.5 - 3.0 FOR DOUBLE CABLES	-	7.3	5.1	5.2	4.0	1.8
94518-0401	TIN								
94518-0300	PLAIN	BRASS	4.0	3.4 - 3.7	5.5	5.5	5.0	5.1	/
94518-0301	TIN								

DIRECTION OF UNREELING

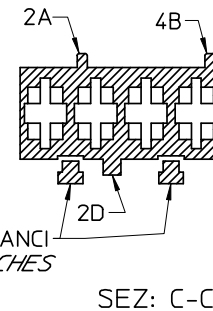


PACKAGING: REFER 945180001-PK  
 STD. DESCRIPTION: HNF TERM (material-plating-wire gauge)

FUNCTIONAL SYMBOLS $F_A = 0$ $F_C = 0$ $F_P = 0$ DIVISIONAL SYMBOLS	THIS DRAWING CONTAINS INFORMATION THAT IS PROPRIETARY TO MOLEX ELECTRONIC TECHNOLOGIES, LLC AND SHOULD NOT BE USED WITHOUT WRITTEN PERMISSION		CURRENT REV DESC: REMOVED PN: 94518-0120,-0121,-0220,-0221		 RAST 5 CRIMP TERMINAL PRODUCT CUSTOMER DRAWING		
	DIMENSION UNITS: mm	SCALE: 7:1	EC NO: 657968				
	GENERAL TOLERANCES (UNLESS SPECIFIED)		DRWN: SCV 2021/03/09				
	ANGULAR TOL ± 2.0°		CHK'D: MBN02 2021/03/15				
4 PLACES ±		APPR: SDEVITT 2021/03/22		DOCUMENT NUMBER: 945180001	DOC TYPE: PSD	DOC PART: 000	REVISION: A1
3 PLACES ±		INITIAL REVISION: DRWN: AKABADI 2021/01/07		MATERIAL NUMBER: SEE TABLE		CUSTOMER: GENERAL MARKET	
2 PLACES ± 0.1		APPR: SDEVITT 2021/02/25		SERIES: 94518		SHEET NUMBER: 1 OF 1	
1 PLACE ± 0.2		DRAFT WHERE APPLICABLE MUST REMAIN WITHIN DIMENSIONS		DRAWING: A2-SIZE		THIRD ANGLE PROJECTION	



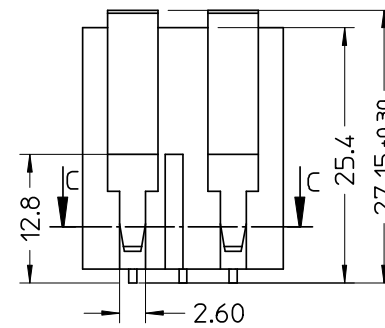
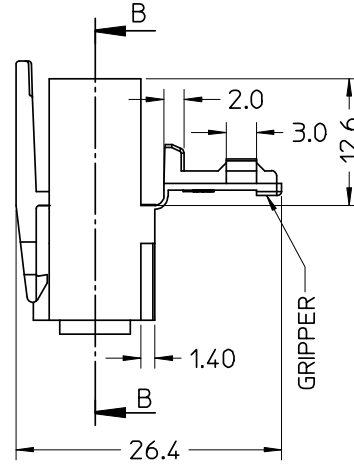
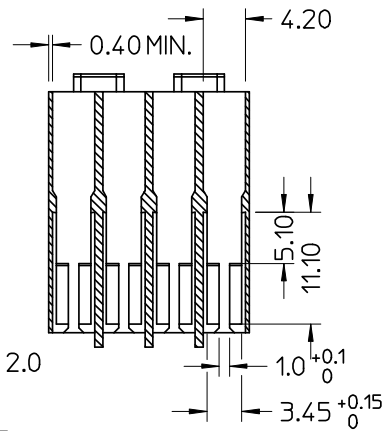
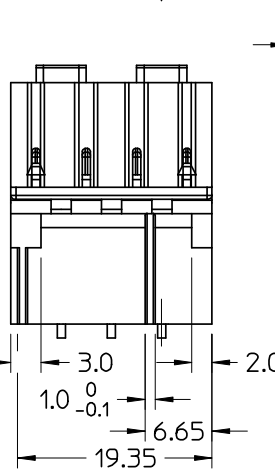
CONFIGURAZIONE POLARIZZAZIONI  
POLARIZATION CONFIGURATION



- NOTE:
- USATO CON TERMINALE 94518-0XXX E 94549-0XXX
  - SPECIFICA DI RIFERIMENTO PER IL CONNETTORE PS-94550-001
  - PER CARATTERISTICHE DI CRIMPATURA RIF. SD-94518-005 E SD-94549-001
  - FORZA DI DISACCOPIAMENTO CONNETTORE (TRAZIONANDO DAI CAVI SENZA AZIONARE L'AGGANCI): 60 N MIN.
  - SPESSORE MINIMO PARETI CONNETTORE 0.40 mm.

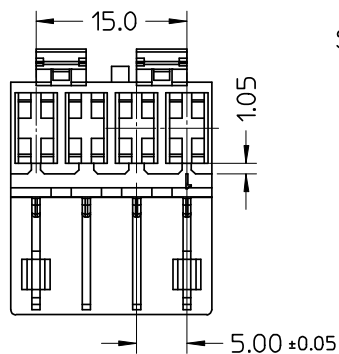
- NOTE:
- USED WITH TERMINALS 94518-0XXX AND 94549-0XXX
  - REFER TO PS-94550-001 FOR CONNECTOR SPECIFICATION
  - REFER TO SD-94518-005 AND SD-94549-001 FOR CRIMPING CHARACTERISTICS
  - CONNECTOR DISENGAGEMENT FORCE (PULLING BY THE WIRES, WITHOUT ACTUATING THE LATCH): 60 N MIN.
  - MINIMUM CONNECTOR WALL THICKNESS 0.40 mm.

CONFEZIONE: Box da 1800 Pz.  
PACKAGING: 1800 pcs in carton box

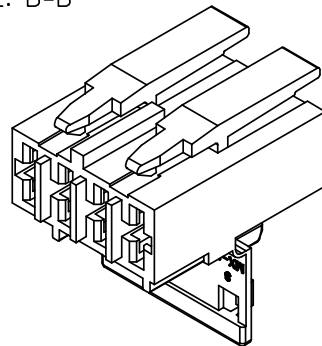


\* AGENCY  
RECOGNIZATIONS  
CSA (file LR19980)  
UL (file E-29179)

P/N	MATERIAL/COLOR
*94550-9104	NYLON 6.6 V0 NATURAL
*94550-9194	NYLON 6.6 V0 GREY
94550-4104	NYLON 6.6 GWT 750 °C sec.IEC 60335-1 TEST METHOD IEC 60695-2-11 NATURAL



SEZ: B-B



SPQ =1800 Std. Descr: HSG W/SEC LOCK AND LATCH 4CKT \_\_\_\_\_ COLOR

EC NO: Z2008-0115 DRWN: FGOTTARD 2008/01/25 CHKD: LSANTIES 2008/01/25 APPR: GZUIN 2008/01/29	QUALITY SYMBOLS ▽ +0 ▽ -0	GENERAL TOLERANCES (UNLESS SPECIFIED)	SCALE 2:1	DESIGN UNITS METRIC	FIRST ANGLE PROJECTION	REVISE ON CAD ONLY													
		<table border="1"> <thead> <tr> <th></th> <th>mm</th> <th>INCH</th> </tr> </thead> <tbody> <tr> <td>4 PLACES</td> <td>± ---</td> <td>± ---</td> </tr> <tr> <td>3 PLACES</td> <td>± ---</td> <td>± ---</td> </tr> <tr> <td>2 PLACES</td> <td>± 0.10</td> <td>± ---</td> </tr> <tr> <td>1 PLACE</td> <td>± 0.2</td> <td>± ---</td> </tr> </tbody> </table>		mm	INCH	4 PLACES	± ---	± ---	3 PLACES	± ---	± ---	2 PLACES	± 0.10	± ---	1 PLACE	± 0.2	± ---	DIMENSION STYLE MM ONLY	TITLE HSG 4 CKT WITH SEC.LOCK AND EXTERNAL LATCH
			mm	INCH															
		4 PLACES	± ---	± ---															
3 PLACES	± ---	± ---																	
2 PLACES	± 0.10	± ---																	
1 PLACE	± 0.2	± ---																	
DRAFT WHERE APPLICABLE	DRAWN BY FGOTTARD DATE 2002/06/27	CHECKED BY MTESTAGU DATE 2002/06/27	MOLEX INCORPORATED																
MUST REMAIN WITHIN DIMENSIONS	APPROVED BY GZUIN DATE 2002/06/27	THIS DRAWING CONTAINS INFORMATION THAT IS PROPRIETARY TO MOLEX INCORPORATED AND SHOULD NOT BE USED WITHOUT WRITTEN PERMISSION	MATERIAL NO. SEE TABLE DOCUMENT NO. SD-94550-008 SHEET NO. 1 OF 1																