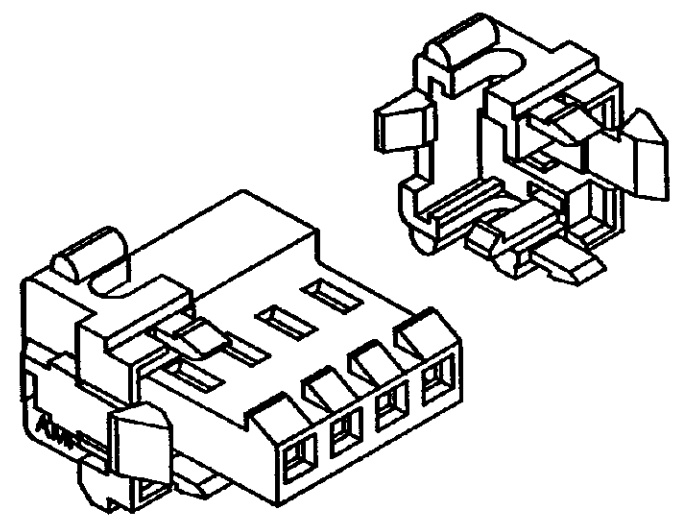
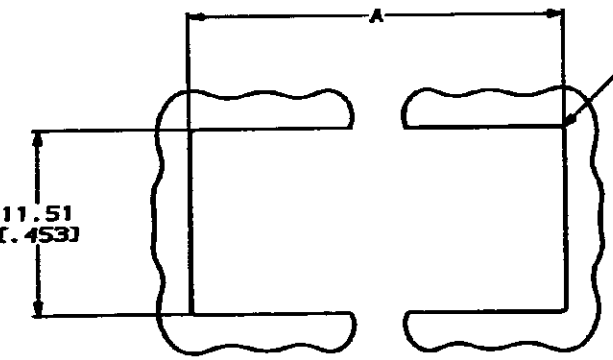


DRAWING MADE IN THIRD ANGLE PROJECTION
 THIS DRAWING IS UNPUBLISHED. RELEASED FOR PUBLICATION
 COPYRIGHT 1980 BY AMP INCORPORATED. ALL DIMENSIONAL UNITS ARE IN INCHES.

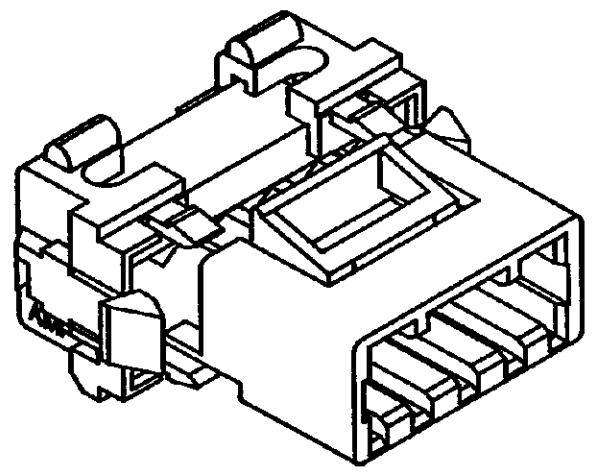
REV. NO.		DATE		DESCRIPTION	
CH	54			6	REV AND REDIN PER ECN CH-3503



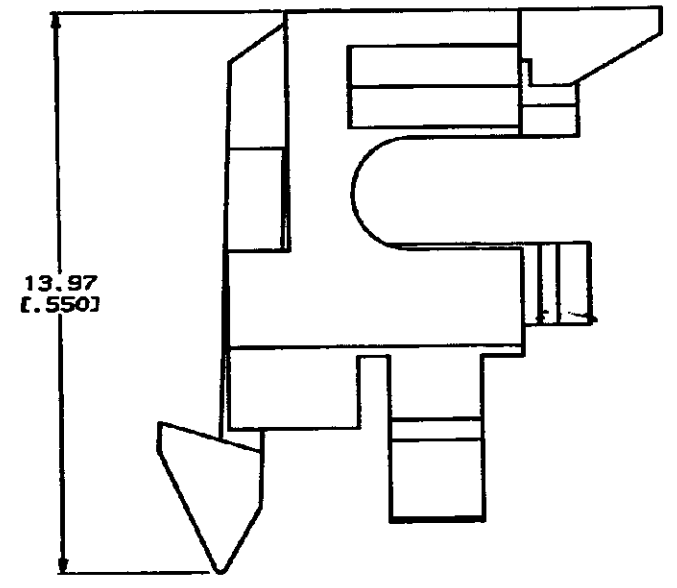
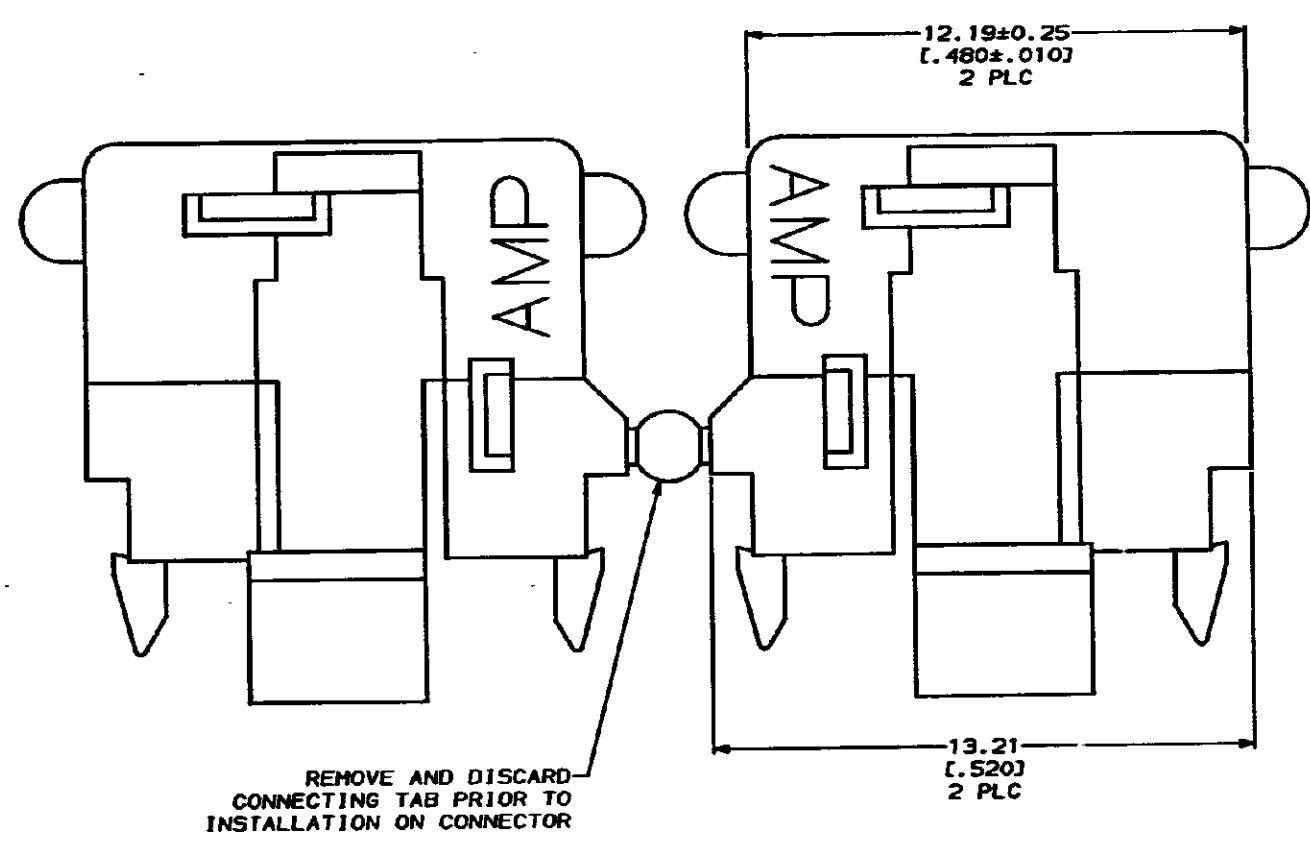
MTA 156 WIRE TO POST CONNECTOR WITH END CAPS INSTALLED
 (RECOMMENDED APPLICATION)



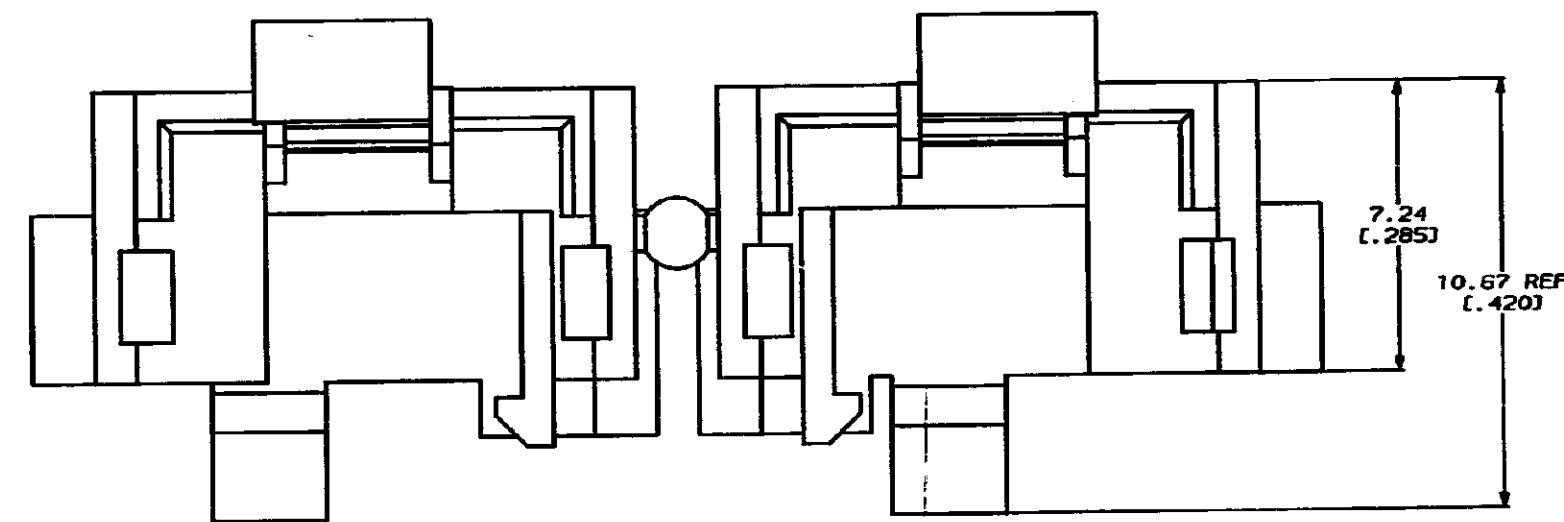
RECOMMENDED PANEL CUTOUT
 PANEL THICKNESS = 1.70 (.067) MAX
 SCALE 4:1



MTA 156 POSTED CONNECTOR WITH END CAPS INSTALLED
 (ALTERNATE APPLICATION)



1. DIMENSIONS IN BRACKETS
 ARE IN INCHES.



	12 POSITION	24 POSITION	101.90 [4.012]
	54.36 [2.140]		
	42.47 [1.672]		
	30.58 [1.204]		
	22.66 [.892]	15 POSITION	66.24 [2.608]
	18.69 [.736]		
CONNECTOR SIZE	A	CONNECTOR SIZE	A

METRIC

DO NOT SCALE PRINT. UNLESS SPECIFIED DIMENSIONS IN MM (INCHES) TOLERANCES ON: 2 PLC DEC ± .013 (.005) 3 PLC DEC ± .013 (.005) ANGLES ± .5		OR C. Mott 8-21-91 D. Mott 8-21-91 E. Mott 8-21-91	AMP Incorporated Harrisburg, PA 17105-3000
MATERIAL NYLON, UL 94V-2 BLACK	PRODUCT SPEC -	NAME END CAP, PANEL MOUNTING, MTA 156	PART NO 641440-1
FINISH -	APPLICATION SPEC -	SIZE D	CASE CODE 00779
WEIGHT -	SCALE 10:1	DRAWING NO 641440	SHEET 1 OF 1

CUSTOMER DRAWING