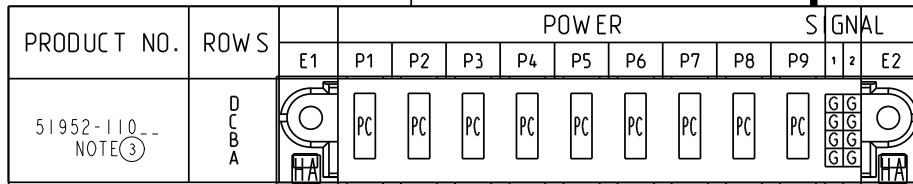


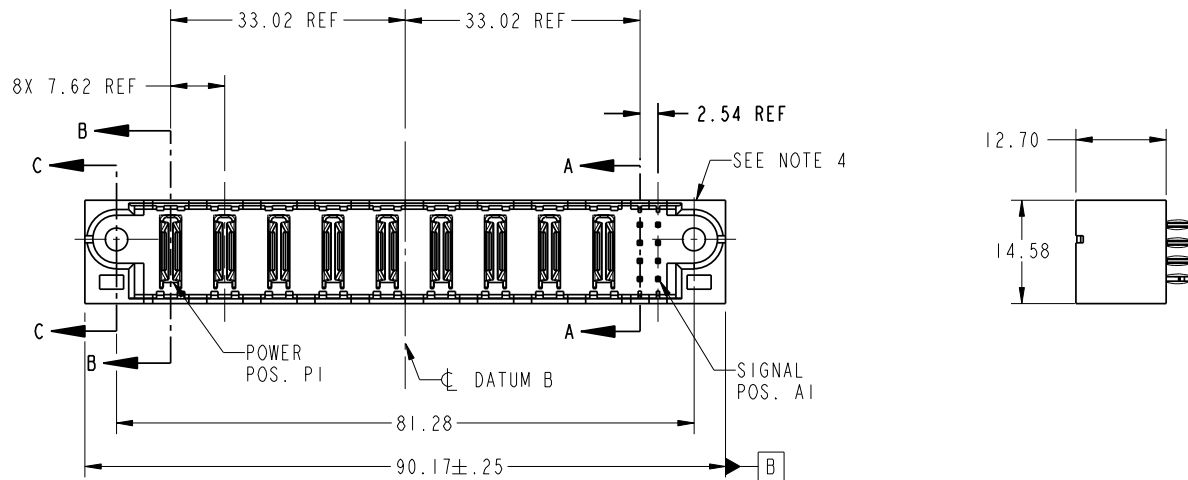
Tous droits strictement reserves. Reproduction ou communication a des tiers interdite sous quelque forme que ce soit sans autorisation écrite du propriétaire. Propriété de c FCI. Droits de reproduction FCI.



All rights strictly reserved. Reproduction or issue to third parties in any form whatever is not permitted without written authority from the proprietor. Property of FCI. Copyright FCI.



51952-110--
NOTE ③



CODE	DIM "M" MATING LENGTH	CONTACT TYPE
PC	[N/A]	POWER
G	[6.86]	SIGNAL
HA	[N/A]	HOLD-DOWN

mat'l code				tolerances unless otherwise specified		CUSTOMER	
lfr	ecn no.	dr	date	linear	0.X ±0.3	COPY	
A	DG06-0561	SW	12/26/06		0.XX ±0.13	projection	
B	DG07-0261	JMG	06/25/07		0.XXX ±0.051		
C	DG07-0357	JULIA	09/10/07	angles	0° ±2°		
				dr	STEVEN WANG 12/26/06		
				enrg	STEVEN WANG 12/26/06	scale 1:1	
				chr	BEER FU 12/26/06		
				appd	JOSEPH HSIA 12/26/06		
sheet index	revision sheet	C 1	C 2	C 3	C 4		

FCI www.fciconnect.com

9ACP + 8S
VERTICAL PF HEADER

product family PwrBlade code 213
size dwg no 51952-110 sheet 1 of 4

cage code 22526

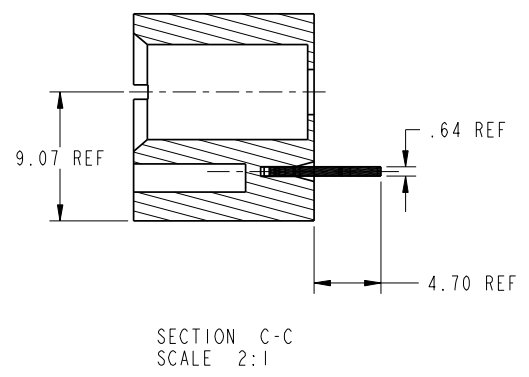
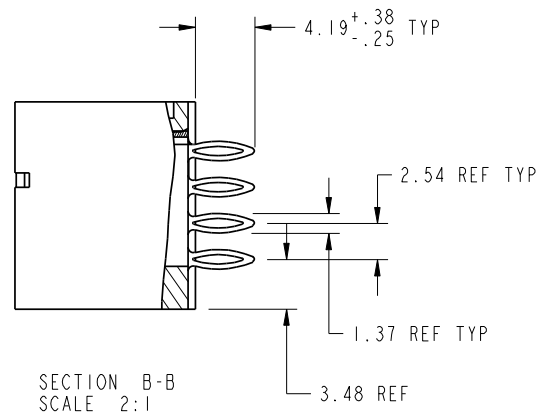
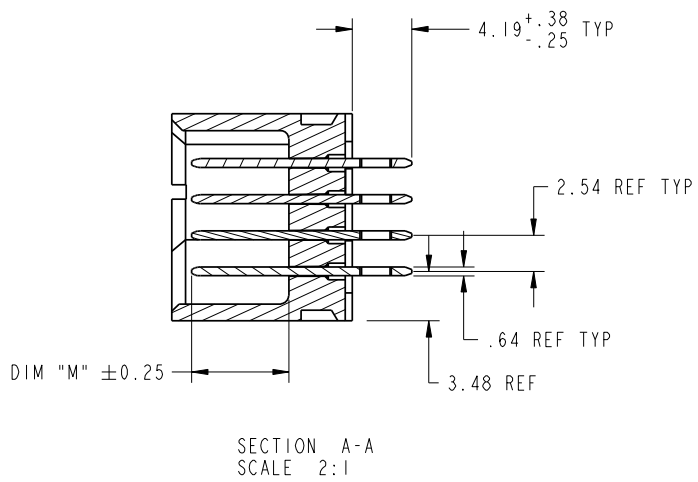
Pro/E

Tous droits strictement reserves. Reproduction ou communication a des tiers interdite sous quelque forme que ce soit sans autorisation ecrite du proprietaire. Propriete de c FCI. Droits de reproduction FCI.



All rights strictly reserved. Reproduction or issue to third parties in any form whatever is not permitted without written authority from the proprietor. Property of FCI. Copyright FCI.

PRODUCT NUMBER
51952-110--
NOTE 3



mat'l code				tolerances unless otherwise specified		CUSTOMER		FCI	
lfr	ecn no.	dr	date	linear	0.X ±0.3	COPY		www.fciconnect.com	
c				linear	0.XX ±0.13	projection		title	
				angles	0.XXX ±0.051			9ACP + 8S VERTICAL PF HEADER	
				dr	STEVEN WANG 12/26/06			product family PwrBlade code	
				enr	STEVEN WANG 12/26/06	scale		size	
				chr	BEER FU 12/26/06	1:1		dwg no	
				appd	JOSEPH HSIA 12/26/06			A 51952-110	
sheet index	revision sheet								code
									213
									sheet
									2 of 4

cage code 22526

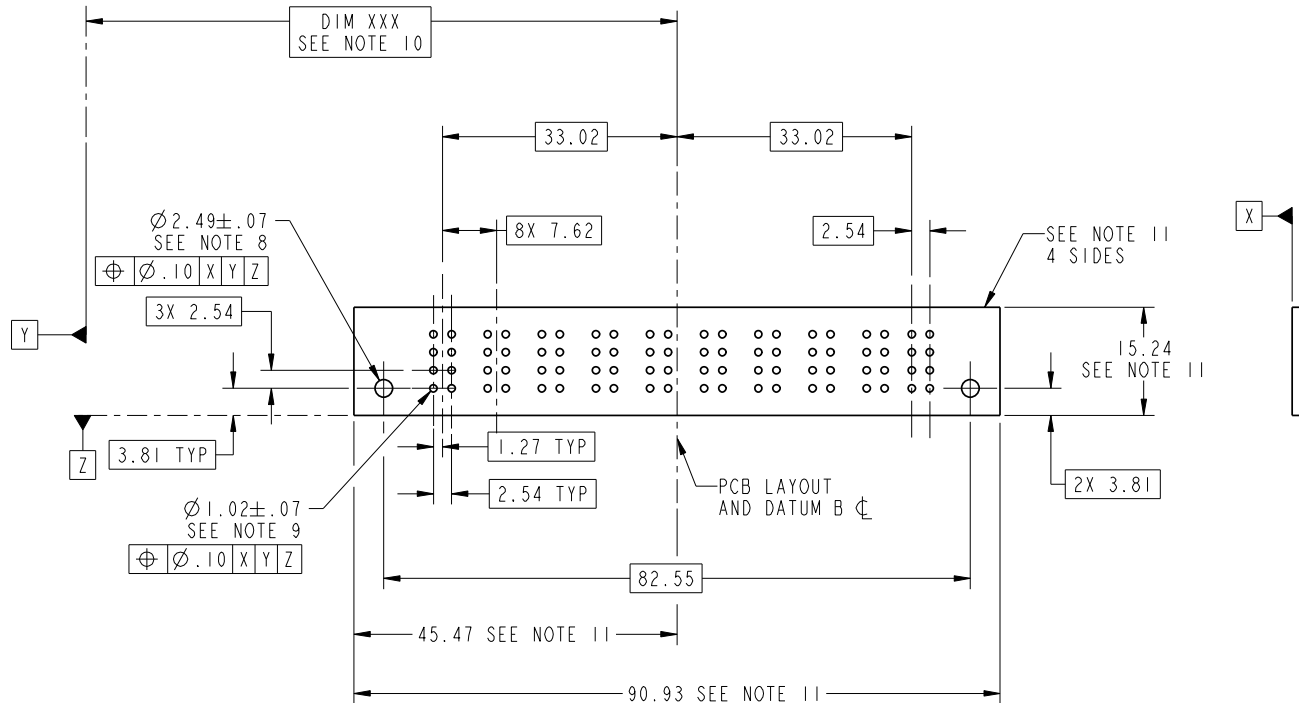
Pro/E

Tous droits strictement reserves. Reproduction ou communication a des tiers interdite sous quelque forme que ce soit sans autorisation écrite du propriétaire. Propriete de c FCI. Droits de reproduction FCI.



All rights strictly reserved. Reproduction or issue to third parties in any form whatever is not permitted without written authority from the proprietor. Property of FCI. Copyright FCI.

PRODUCT NUMBER
51952-110--
NOTE 3



mat'l code				tolerances unless otherwise specified				CUSTOMER		FCI	
lfr	ecm no.	dr	date	linear	0.X ± 0.3		COPY		www.fciconnect.com		
c					0.XX ± 0.13		projection		title		
				angles	0.XXX ± 0.051				9ACP + 8S VERTICAL PF HEADER		
				dr	STEVEN WANG	12/26/06			product family	PwrBlade	code
				enrg	STEVEN WANG	12/26/06			size	dwg no	213
				chr	BEER FU	12/26/06			51952-110		sheet
				appd	JOSEPH HSIA	12/26/06	scale		A		3 of 4
sheet index	revision sheet										

cage code 22526

Pro/E

Tous droits strictement reserves. Reproduction ou communication a des tiers interdite sous quelque forme que ce soit sans autorisation écrite du propriétaire. Propriete de c FCI. Droits de reproduction FCI.



All rights strictly reserved. Reproduction or issue to third parties in any form whatever is not permitted without written authority from the proprietor. Property of FCI. Copyright FCI.

PRODUCT NUMBER
51952-110__
NOTE 3

NOTES:

1. DIMENSIONS AND TOLERANCES ARE IN ACCORDANCE WITH ASME Y14.5M, 1994 UNLESS OTHERWISE SPECIFIED.

CONNECTOR NOTES:

2 HOUSING MATERIAL: UL 94 V-0 GLASS FILLED
HIGH-TEMP THERMOPLASTIC
POWER CONTACT MATERIAL: COPPER ALLOY
SIGNAL PIN MATERIAL: COPPER ALLOY

3. PLATING:
51952-110 ,51952-110LF PLATING SPEC. WAS SHOWN IN THE PRINT OF 10064183.

4 MANUFACTURER'S NAME, P/N, AND DATE CODE TO APPEAR ON THIS SURFACE.

5. PRODUCT SPECIFICATION GS-12-149.
APPLICATION SPECIFICATION BUS-20-067.

6. PACKAGED IN TRAYS.

PCB NOTES:

7. ALL HOLE DIAMETERS ARE FINISHED HOLE SIZE.

8. MOUNTING HOLES, WHERE APPLICABLE, ARE UNPLATED.

9 $\varnothing 1.151 \pm 0.025$ DRILLED HOLES PLATED WITH
0.008 MIN SnPb OR Sn OVER .001 [0.03]
TO 0.08 Cu PLATING TO ACHIEVE
 $\varnothing 1.02 \pm .07$ HOLE.

10 "DIM XXX" TO BE DETERMINED BY THE CUSTOMER.

11 CONNECTOR KEEP-OUT ZONE.

12. FOR PRESS FIT APPLICATION USE FCI CAM TOOL 430169-XXX.

mat'l code				tolerances unless otherwise specified			CUSTOMER		FCI	
lfr	ecn no.	dr	date	linear	0.X ±0.3		COPY		www.fciconnect.com	
C				linear	0.XX ±0.13		projection		title	
				angles	0° ±2°				9ACP + 8S VERTICAL PF HEADER	
				dr	STEVEN WANG	12/26/06	MM		product family	PwrBlade
				enrg	STEVEN WANG	12/26/06	scale		size	dwg no
				chr	BEER FU	12/26/06	1:1		A	51952-110
				appd	JOSEPH HSIA	12/26/06			code	213
sheet index	revision sheet								sheet	4 of 4



9ACP + 8S
VERTICAL PF HEADER

product family PwrBlade
size A
dwg no 51952-110
code 213
sheet 4 of 4

cage code 22526

Pro/E