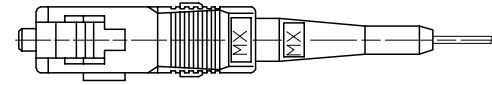
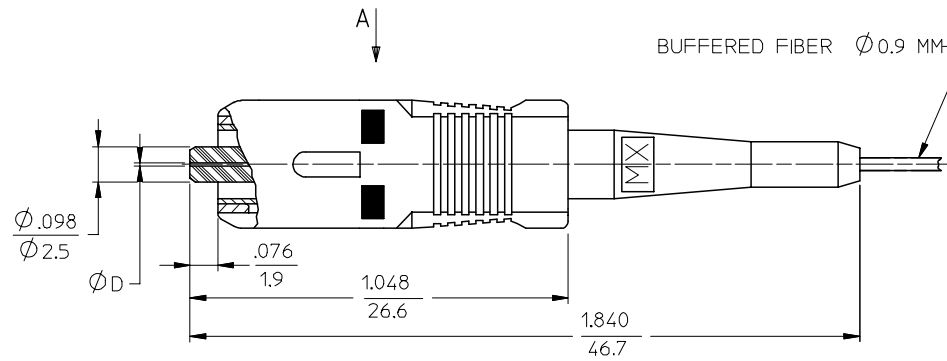
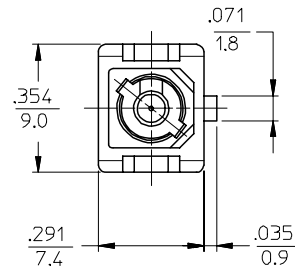


CONNECTOR P/N	Ø (Mm)	FERRULE MATERIAL	BOOT COLOR	HOUSING COLOR	CONNECTOR TYPE
106063-0500	127	Zr	BLUE	BLUE	MULTIMODE
106063-0520*			BEIGE	BEIGE	
106063-0560			BLACK	BLACK	
106063-0590*			RED	RED	
106063-0570	125.5		YELLOW	BLUE	SINGLE MODE
106063-2510			BLACK	BLACK	
106063-2500			RED	RED	
106063-2570			BLUE	BLUE	
106063-2580	128		BEIGE	BEIGE	MULTIMODE
106063-3500			BLACK	BLACK	
106063-3560			RED	RED	
106063-3570			YELLOW	BLUE	
106063-3580	125	BLACK	BLACK	SINGLE MODE	
106063-4500		RED	RED		
106063-4510		YELLOW	BLUE		
106063-5500		BLACK	BLACK		
106063-5590*	126	RED	RED	SINGLE MODE	
106063-5570		YELLOW	BLUE		
106063-5580		BEIGE	BEIGE		
106063-7500	127				
106063-3540	128				



VIEW A
SCALE 2.5:1



NOTES:

1. ALL DIMENSIONS ARE FOR REFERENCE ONLY.

*2. P/N 106063-0590, P/N 106063-5590, P/N 106063-3540 AND P/N 106063-0520 ARE BULK PACKED IN QUANTITIES OF 100PCS.

ENTER DESCRIPTION EC NO: MF2006-0424 DRAWN/RPACIFICI 2006/01/24 CHKD: 2006/01/24 APPR: JGUMIN 2006/01/24 REVISIONS	QUALITY SYMBOLS	GENERAL TOLERANCES (UNLESS SPECIFIED)	DIMENSION STYLE	SCALE	DESIGN UNITS	THIRD ANGLE PROJECTION	
	$\nabla=0$ $\nabla=0$	mm INCH 4 PLACES ± --- ± --- 3 PLACES ± --- ± --- 2 PLACES ± --- ± --- 1 PLACE ± --- ± --- ANGULAR ±1/2°	INCH ONLY	4:1	INCH		
				DRAWN BY DATE RPACIFICI 2005/12/22	TITLE SC BARE FIBER CONNECTOR		
				CHECKED BY DATE	APPROVED BY DATE		
		DRAFT WHERE APPLICABLE MUST REMAIN WITHIN DIMENSIONS	SEE TABLE	MATERIAL NO.	DOCUMENT NO.	SHEET NO.	
			SIZE C	MOLEX INCORPORATED		1 OF 1	
			THIS DRAWING CONTAINS INFORMATION THAT IS PROPRIETARY TO MOLEX INCORPORATED AND SHOULD NOT BE USED WITHOUT WRITTEN PERMISSION				