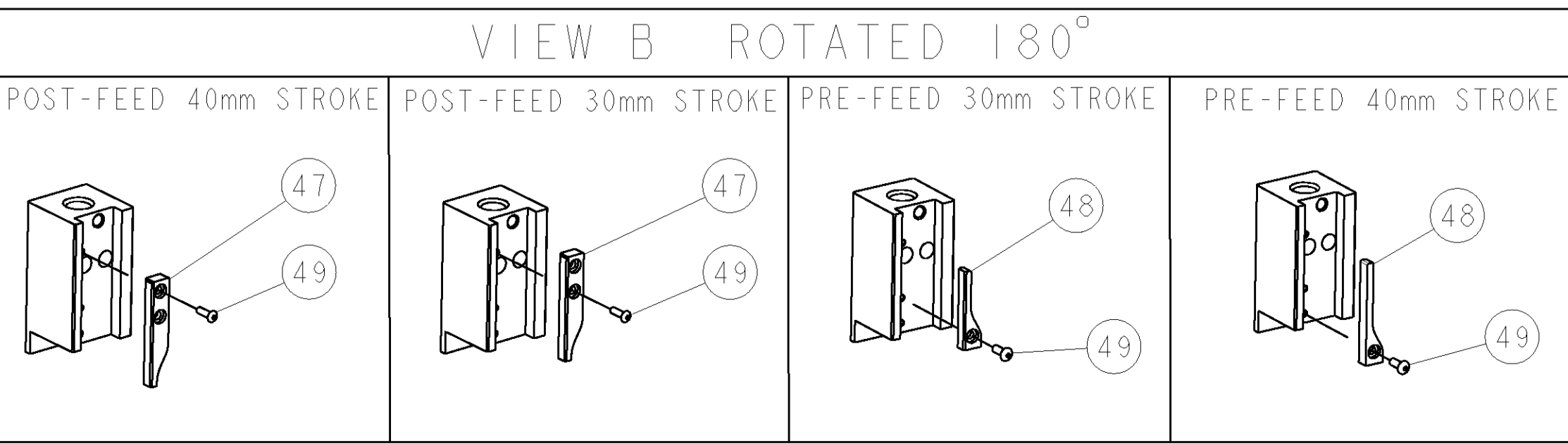
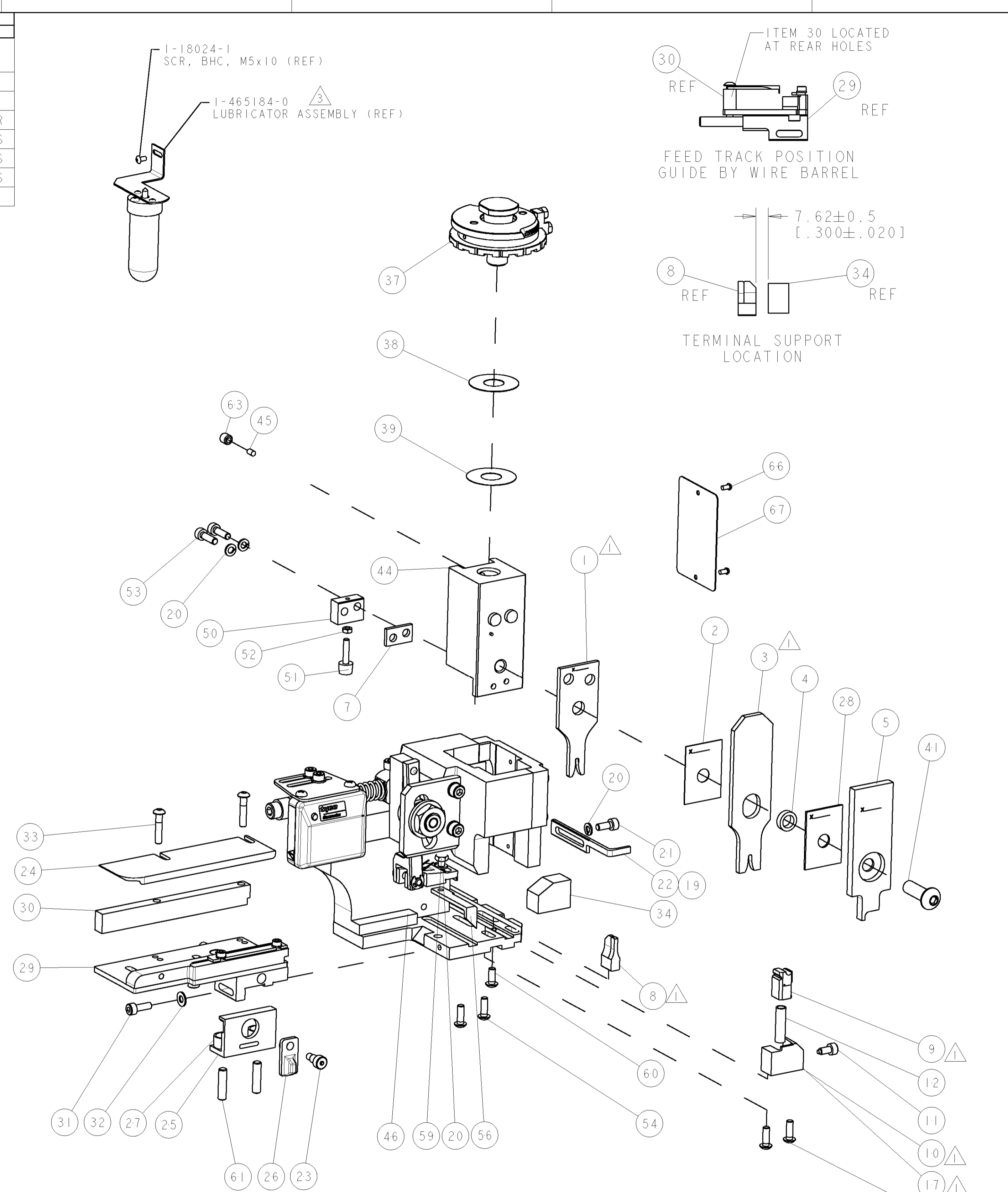


PART NUMBER	REV	TERMINATOR	FEED TYPE	DESCRIPTION
1528689-1	A	LEADMAKER	MECH POST FEED	CUTS CARRIER
1528689-2	A	BENCH	MECH PRE FEED	CUTS CARRIER
1528689-6	A	LEADMAKER	MECH POST FEED	CONTINUOUS CARRIER
7-1528689-1	A	LEADMAKER	MECH POST FEED	-1 AND SPARE PARTS
7-1528689-2	A	BENCH	MECH PRE FEED	-2 AND SPARE PARTS
7-1528689-6	A	LEADMAKER	MECH POST FEED	-6 AND SPARE PARTS
7-1528689-7	A	-	-	SPARE PARTS KIT

CRIMP DATA		TYCO TERMINAL	TYCO CRIMP SPEC
TERMINAL NAME: DIA 2.5MM FOR CONTACT PIN/SOCKET			
CRIMP	SIZE	TYPE	RANGE
WIRE	2.03 [1.080 IN]	F	0.50mm ² -1.00mm ²
INSUL	2.54 [1.100 IN]	O	1.40-2.10 [1.055-1.083 IN]
WIRE STRIP LENGTH REF TO SPEC		APPL INSTRUCTIONS 408-8322 & 408-8490	
TERMINAL	114-18020 (A)	FEED	14.50 [1.571 IN]
APPL SPEC	114-18040 (B)		
TERMINALS APPLIED			
929963 (A)	-	-	-
929970 (A)	-	-	-
929986 (B)	-	-	-
WIRE SIZE	CRIMP HEIGHT	REF SETTING	
1.00mm ²	1.45 ±0.05 [1.057 ±0.002 IN]	B	9
0.75mm ²	1.36 ±0.05 [1.054 ±0.002 IN]	C	5
0.50mm ²	1.27 ±0.05 [1.050 ±0.002 IN]	D	2

- △ RECOMMENDED SPARE PARTS.
- 2. GREASE RAM, CAM, CAM FOLLOWER AND FEED ROD LIGHTLY.
- △ CERTAIN TERMINALS REQUIRE LUBRICATION. REFER TO THE APPLICATOR INSTRUCTION SHEET FOR MORE INFORMATION.
- 4. LUBRICATE DAILY PER THE APPLICATOR INSTRUCTION SHEET SUPPLIED WITH THE APPLICATOR.



-77	-76	-72	-71	-6	-2	-1	PART NO	DESCRIPTION	ITEM NO
-	-	-	-	-	-	-	-	-	84
-	-	-	-	-	-	-	-	-	83
-	-	-	-	-	-	-	-	-	82
-	-	-	-	-	-	-	-	-	81
-	-	-	-	-	-	-	-	-	80
-	-	-	-	-	-	-	-	-	79
-	-	-	-	-	-	-	-	-	78
-	-	-	-	-	-	-	-	-	77
-	-	-	-	-	-	-	-	-	76
-	-	-	-	-	-	-	-	-	75
-	-	-	-	-	-	-	-	-	74

SET UP GAGE
458637-3

REVISONS		DATE	BY	APPD
A	66	29AUG2006	LJL	MC

QTY	DESCRIPTION	ITEM NO
-	-	73
-	-	72
-	-	71
-	-	70
-	-	69
-	-	68
-	-	67
-	-	66
-	-	65
-	-	64
-	-	63
-	-	62
-	-	61
-	-	60
-	-	59
-	-	58
-	-	57
-	-	56
-	-	55
-	-	54
-	-	53
-	-	52
-	-	51
-	-	50
-	-	49
-	-	48
-	-	47
-	-	46
-	-	45
-	-	44
-	-	43
-	-	42
-	-	41
-	-	40
-	-	39
-	-	38
-	-	37
-	-	36
-	-	35
-	-	34
-	-	33
-	-	32
-	-	31
-	-	30
-	-	29
-	-	28
-	-	27
-	-	26
-	-	25
-	-	24
-	-	23
-	-	22
-	-	21
-	-	20
-	-	19
-	-	18
-	-	17
-	-	16
-	-	15
-	-	14
-	-	13
-	-	12
-	-	11
-	-	10
-	-	9
-	-	8
-	-	7
-	-	6
-	-	5
-	-	4
-	-	3
-	-	2
-	-	1

QTY	PART NO	DESCRIPTION	ITEM NO
-	-	-	84
-	-	-	83
-	-	-	82
-	-	-	81
-	-	-	80
-	-	-	79
-	-	-	78
-	-	-	77
-	-	-	76
-	-	-	75
-	-	-	74

QTY	PART NO	DESCRIPTION	ITEM NO
-	-	-	84
-	-	-	83
-	-	-	82
-	-	-	81
-	-	-	80
-	-	-	79
-	-	-	78
-	-	-	77
-	-	-	76
-	-	-	75
-	-	-	74

QTY	PART NO	DESCRIPTION	ITEM NO
-	-	-	84
-	-	-	83
-	-	-	82
-	-	-	81
-	-	-	80
-	-	-	79
-	-	-	78
-	-	-	77
-	-	-	76
-	-	-	75
-	-	-	74

QTY	PART NO	DESCRIPTION	ITEM NO
-	-	-	84
-	-	-	83
-	-	-	82
-	-	-	81
-	-	-	80
-	-	-	79
-	-	-	78
-	-	-	77
-	-	-	76
-	-	-	75
-	-	-	74

QTY	PART NO	DESCRIPTION	ITEM NO
-	-	-	84
-	-	-	83
-	-	-	82
-	-	-	81
-	-	-	80
-	-	-	79
-	-	-	78
-	-	-	77
-	-	-	76
-	-	-	75
-	-	-	74

QTY	PART NO	DESCRIPTION	ITEM NO
-	-	-	84
-	-	-	83
-	-	-	82
-	-	-	81
-	-	-	80
-	-	-	79
-	-	-	78
-	-	-	77
-	-	-	76
-	-	-	75
-	-	-	74