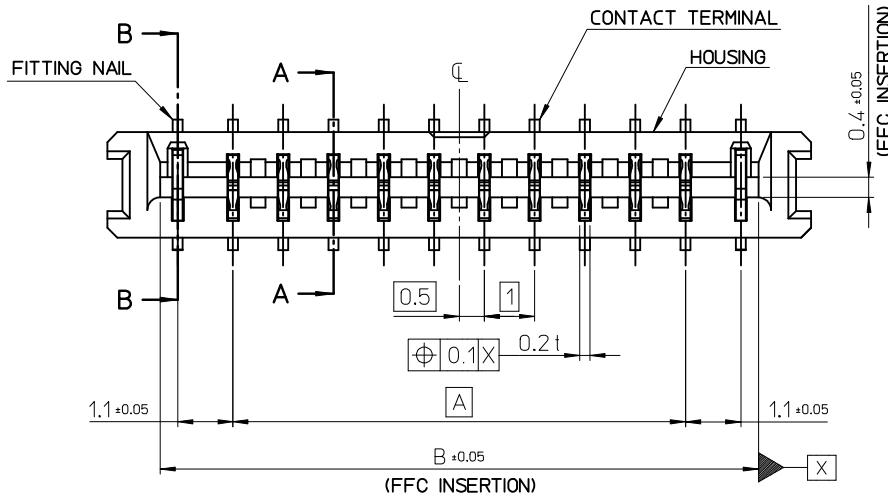
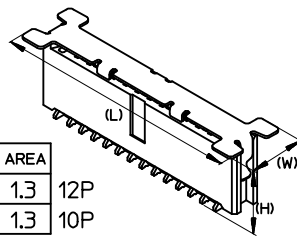


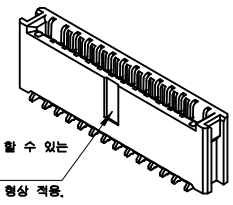
10 9 8 7 6 5 4 3 2 1



ISOMETRIC VIEW (HOUSING ASSY WITH VACUUM COVER)



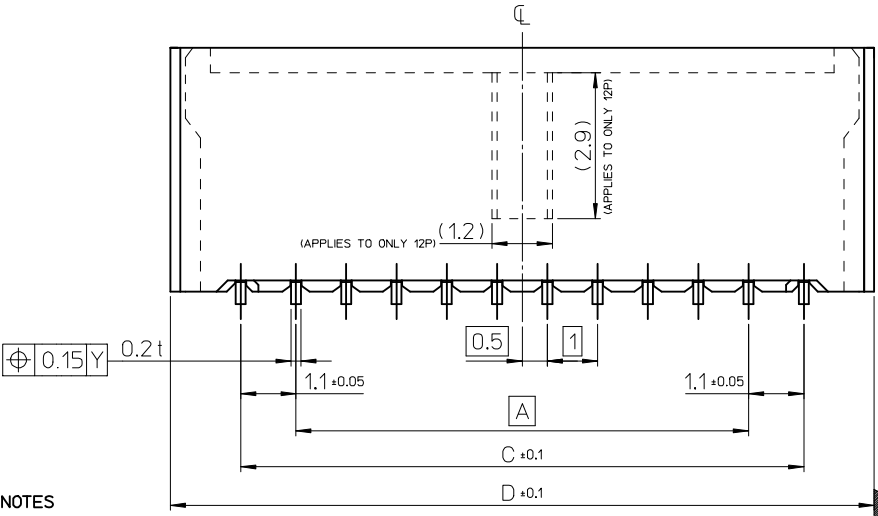
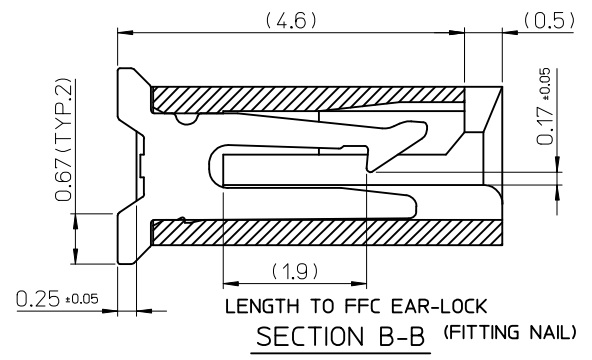
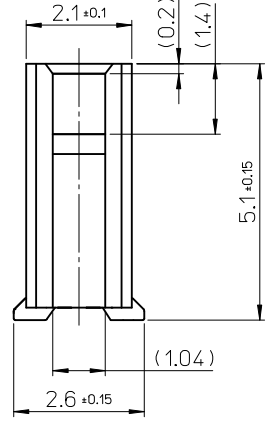
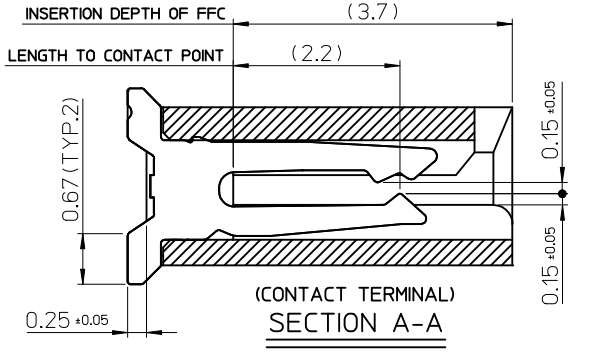
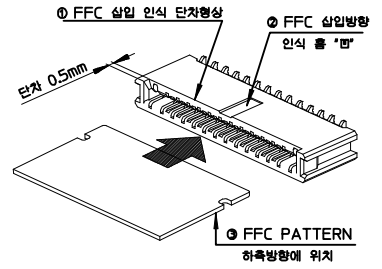
ISOMETRIC VIEW (HOUSING ASSY)



L	W	H	VACUUM AREA	
17.4	4.1	5.3	14 x 1.3	12P
15.4	4.1	5.3	12 x 1.3	10P

FFC 삽입방향을 인식 할 수 있는 홈 '마'형상 추가  
VERTICAL 12P에만 형상 적용.

FFC 삽입시 방향성 확인 방법



- NOTES
- MATERIAL
    - HOUSING : LCP VECTRA E473i. GLASS FILLED, UL94V-0 COLOR : BLACK
    - TERMINAL : COPPER ALLOY, C52100-SH (THICKNESS : 0.2)
    - FITTING NAIL : COPPER ALLOY, C52100-SH (THICKNESS : 0.2)
  - FINISHES
    - TERMINAL : TIN(Sn) OVER NICKEL(Ni) PLATING. Tin(Sn) 1~3 MICROMETER, NICKEL(Ni) 1~3 MICROMETER
    - FITTING NAIL : TIN(Sn) OVER NICKEL(Ni) PLATING. Tin(Sn) 1~3 MICROMETER, NICKEL(Ni) 1~3 MICROMETER
  - SOLDER TAILS AND FITTING NAILS  
COPLANARITY IS TO BE 0.08 MAXIMUM.

NEW RELEASED  
EC NO: KOR2014-0045  
DRWN: JHCHANG 2013/10/22  
CHKD: KSK IM 2013/10/22  
APPR: YSK IM02 2013/10/23

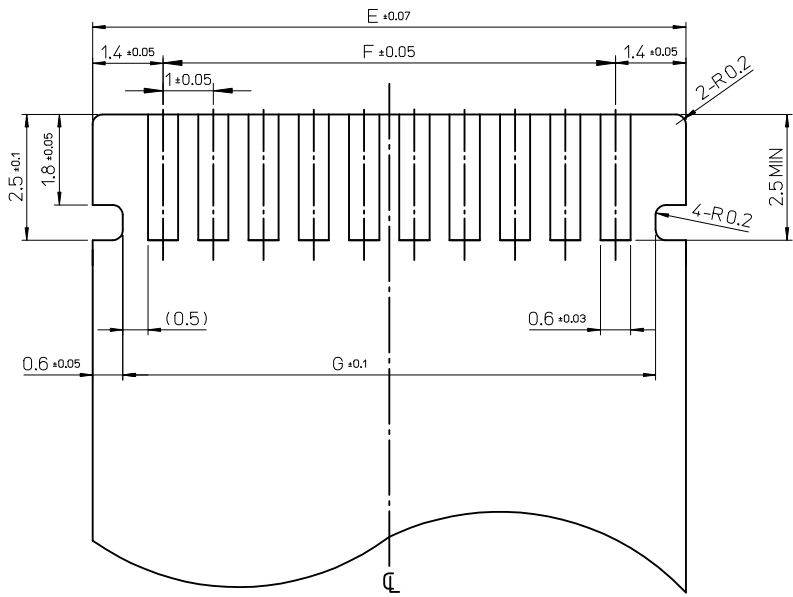
REV	DESCRIPTION
B	

QUALITY SYMBOLS	
▽=0	
▽=0	

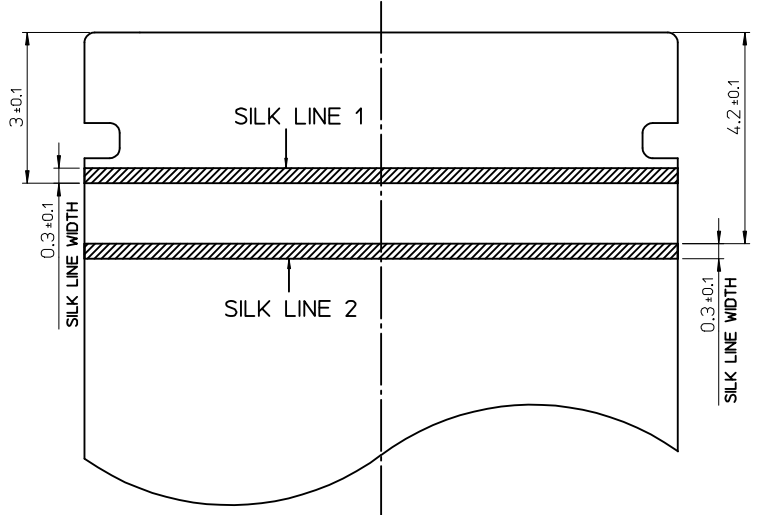
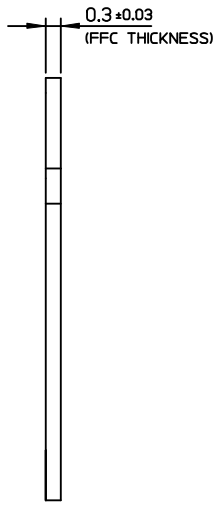
GENERAL TOLERANCES (UNLESS SPECIFIED)	
4 PLACES	± 0.1
3 PLACES	± 0.05
2 PLACES	± 0.05
1 PLACE	± 0.1

DIMENSION STYLE		SCALE		DESIGN UNITS		THIRD ANGLE PROJECTION	
MM ONLY				METRIC		◎ □	
DRAWN BY	DATE	TITLE		1.0 PITCH FFC CONN. NON-ZIF TYPE			
JHCHANG	2013/01/22						
CHECKED BY	DATE						
KSK IM	2013/01/22			DOCUMENT NO.		SHEET NO.	
APPROVED BY	DATE	SEE TABLE		SD-104176-001		1 OF 3	
YSK IM02	2013/01/28			THIS DRAWING CONTAINS INFORMATION THAT IS PROPRIETARY TO MOLEX INCORPORATED AND SHOULD NOT BE USED WITHOUT WRITTEN PERMISSION			

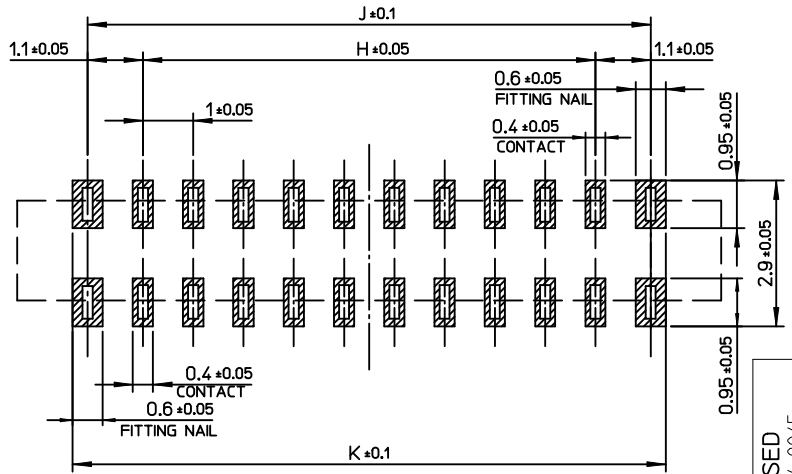
9 8 7 6 5 4 3 2 1



CONTACT SIDE



BACK SIDE



Recommended PCB Pattern Layout  
(COMPONENT SIDE)

1. RECOMMENDED FFC SPECIFICATION

WHEN FFC FULLY INSERT → SILK LINE 1 : INVISIBLE  
SILK LINE 2 : VISIBLE

2. INSTRUCTION UPON USAGE

- PROHIBIT TO USE THE SAME FFC TWICE BECAUSE OF THE BREAKING RISK OF EAR-LOCK PART.
- CONNECTOR IS AVAILABLE TO INSERT 30 TIMES BUT FFC IS NOT AVAILABLE TO INSERT 30 TIMES IF IT IS JUST FFC SINGLE PART.

13.8	13.2	11.0	12.6	11.0	13.8	1041761217	12
11.8	11.2	9.0	10.6	9.0	11.8	1041761017	10
K	J	H	G	F	E	MATERIAL NO.	CKT

NEW RELEASED  
EC NO: KOR2014-0045  
DRWN: JHCHANG 2013/10/22  
CHKD: KSK IM 2013/10/22  
APPR: YSK IM02 2013/10/23

REV	DESCRIPTION
▽=0	QUALITY SYMBOLS
▽=0	

GENERAL TOLERANCES (UNLESS SPECIFIED)	
	mm INCH
4 PLACES	± --- ± ---
3 PLACES	± 0.005 ± ---
2 PLACES	± 0.05 ± ---
1 PLACE	± 0.1 ± ---
ANGULAR ± 1°	
DRAFT WHERE APPLICABLE MUST REMAIN WITHIN DIMENSIONS	

DIMENSION STYLE	
MM ONLY	
DRAWN BY	DATE
JHCHANG	2013/01/22
CHECKED BY	DATE
KSK IM	2013/01/22
APPROVED BY	DATE
YSK IM02	2013/01/28
MATERIAL NO.	
SEE SHEET 1	

SCALE	DESIGN UNITS	THIRD ANGLE PROJECTION
1:1	METRIC	
TITLE		
1.0 PITCH FFC CONN. NON-ZIF TYPE		
<b>molex</b>		
DOCUMENT NO.		SHEET NO.
SD-104176-001		2 OF 3
THIS DRAWING CONTAINS INFORMATION THAT IS PROPRIETARY TO MOLEX INCORPORATED AND SHOULD NOT BE USED WITHOUT WRITTEN PERMISSION		

(HOLE PITCH) 4.0 ±0.1

(POCKET PITCH) 12.0 ±0.1

PULL OUT DIRECTION

2.0 ±0.1

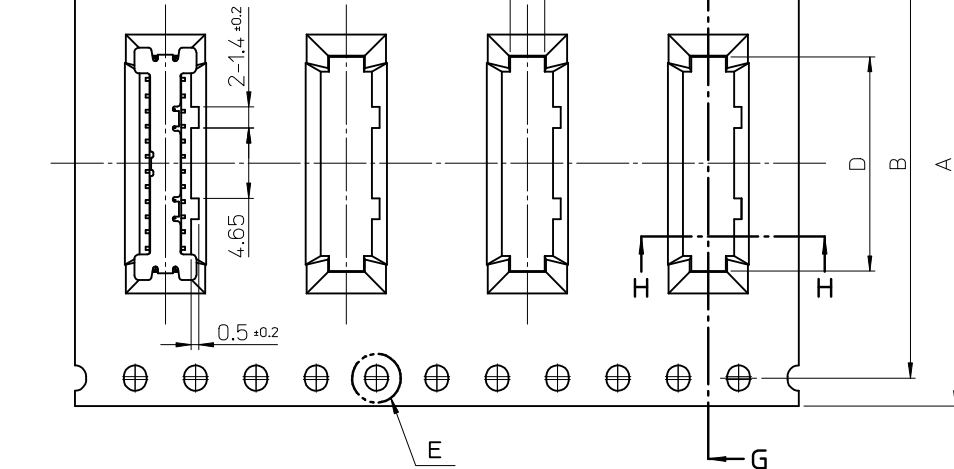
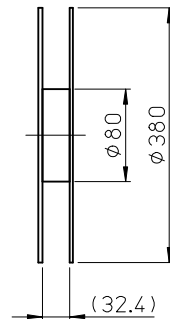
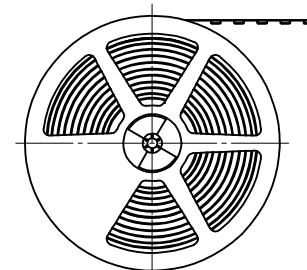
2.3 ±0.15

∅ 1.5 ±0.1

1.75 ±0.1

0.45 ±0.05

5.9

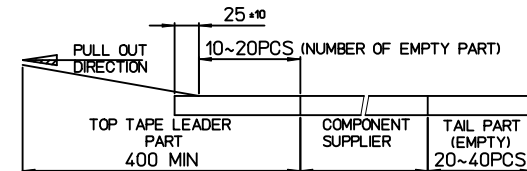


(WIDTH)

SECTION G-G

NOTES

- 1. QUANTITY OF CONNECTORS : 1400PCS/REEL
- 2. LEAD LENGTH



- 3. PEELING OFF FORCE OF COVER TAPE : 0.1N~0.59N(10.2GF~60GF)  
(PEELING DIRECTION AS SHOW IN FOLLOW FIG.)  
PEELING OFF SPEED : 300mm/Min.(Ref.)

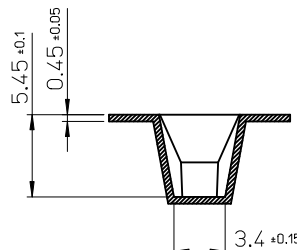
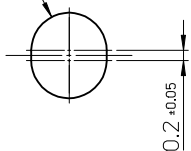


- 4. FLASH IN ANY PORTION SHOULD BE LESS THAN 0.20mm MAX.

26.5	1,400	16.2	14.2	28.4	32.0	12
26.5	1,400	14.2	12.2	28.4	32.0	10
COVER TAPE	Q'TY/REEL	D	C	B	A	CKT

← ASS'Y FEED DIR.  
CUSTOMER FEED DIR →

∅ 1.5 ±0.1



SECTION H-H

NEW RELEASED EC NO: KOR2014-0045 DRWN: JHCHANG 2013/10/22 CHKD: KSKIM 2013/10/22 APPR: YSKIM02 2013/10/23	QUALITY SYMBOLS ▽=0 ◻=0	GENERAL TOLERANCES (UNLESS SPECIFIED)		DIMENSION STYLE MM ONLY		SCALE 1:1		DESIGN UNITS METRIC		THIRD ANGLE PROJECTION		
			mm	INCH	DRAWN BY JHCHANG	DATE 2013/01/22	TITLE 1.0 PITCH FFC CONN. NON-ZIF TYPE					
		4 PLACES	± ---	± ---	CHECKED BY KSKIM	DATE 2013/01/22						
		3 PLACES	± 0.005	± ---	APPROVED BY YSKIM02	DATE 2013/01/28						
2 PLACES	± 0.05	± ---	MATERIAL NO. SEE SHEET 1		DOCUMENT NO. SD-104176-001		SHEET NO. 3 OF 3					
1 PLACE	± 0.1	± ---	DRAFT WHERE APPLICABLE MUST REMAIN WITHIN DIMENSIONS									