



# SERIES 07

RAISING THE BAR  
MP - COUNT ON IT

Switchable Circuit Breaker

Small Package

UL489 Protector

Cadmium - Free

High Capacity 5000AIC



## SUPERIOR CIRCUIT PROTECTION

[www.mechprod.com](http://www.mechprod.com)

## Series 07 Overview

### FEATURES:

- AC/DC ratings from 5 to 40A
- UL, CSA, VDE, CCC
- ROHS Compliance - Cd free
- High capacity in a small package
- Double-break contact mechanism
- Withstands short circuit conditions as high as 5kA



## Series 07 Specifications

<b>Standard Amp Ratings</b>	Model 752: 15A and 20A Model 762: 5A*, 7A*, 10A, 15A and 20A Model 772: 30A and 40A <small>*Consult factory for amperage ratings 5-7A, &amp; 30-40A</small>
<b>Maximum Voltage Ratings</b>	Model 752: 120VAC per UL, CSA & CCC, 277VAC / 48VDC per VDE Model 762: 120VAC (5-20A) per UL, CSA, CCC, 277VAC (5-9A) per UL, CCC, 277VAC/48VDC (10-20A) per VDE Model 772: 277VAC per CCC
<b>Ultimate Trip</b>	Must hold 100% at 25C / 77F, Must trip at 135% within 1 hour
<b>Dielectric Strength</b>	1500VAC Minimum
<b>Interrupt Capacity (UL489 and UL1077)</b>	Model 752: 5,000A/120VAC per UL489 Model 762: 5,000A/120VAC per UL1077, 1,000A/120VAC per UL1077 Model 772: 1,000/120VAC per UL1077
<b>Inrush Capacity</b>	Will not trip at 35X rated current for 1/2 cycle (0.008 sec.)
<b>Regulatory Approvals</b>	
<b>Model 752</b>	UL - Recognized per UL489 (File #50952) suitable for branch circuit protection CSA - Certified per C22.2 No. 5 (File #2696722) VDE - Licensed to IEC STD 60934 (License #40011788) CCC - CQC STD GB17701-2008 (Certificate #2004010307133518)
<b>Model 762</b>	UL -Recognized per UL1077 (File #E27727) CSA - Certified (File #1258916) VDE - Licensed to IEC STD 60934 (License #40011788) CCC-CQC STD GB17701-2008 (Certificate #2004010307133518)
<b>Model 772</b>	UL - Recognized per UL1077 (File #E27727) CCC - CQC STD GB17701-2008 (Certificate #2004010307133518)

### Ambient Temperature Correction Factor

Current Rating	°F	32	77	104	122	140
	°C	0	25	40	50	60
5 & 7A		0.84	1.00	1.15	1.3	1.53
10 to 40A		0.88	1.00	1.11	1.2	1.32

Factors are typical for amperages listed

### Voltage Drop

Model	Ampere Range	Voltage Drop
752	15A & 20A	0.25V
762	5 & 7A	0.35V
	10, 15 & 20A	0.25V
772	30 & 40	0.15V

### Overload Trip Time Data (in seconds)

Current Rating	200%	300%	400%	500%	600%	800%	1000%
5 - 7 A	5 - 20	1.7 - 6.4	0.9 - 3.1	0.5 - 1.9	0.35 - 1.4	0.2 - 0.76	0.17 - 0.53
10 - 30 A	5 - 30	1.8 - 10	0.9 - 5	0.5 - 3.3	0.38 - 2.3	0.2 - 1.3	0.15 - 0.9

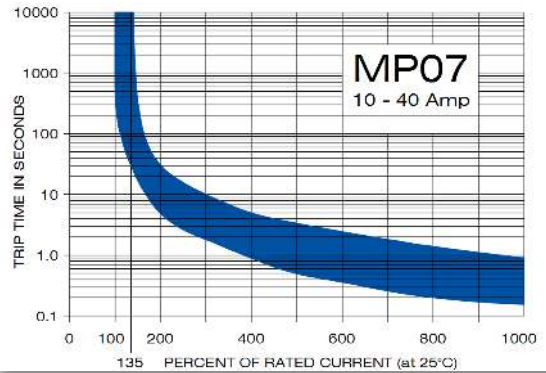
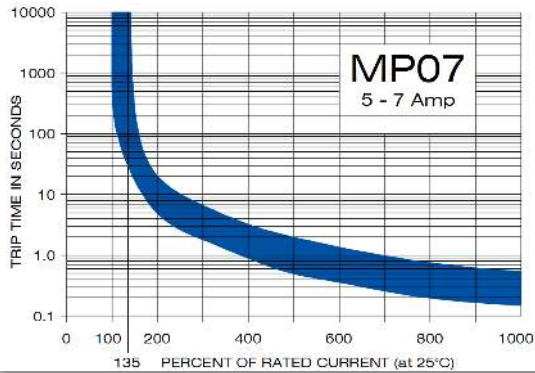


1112 N. Garfield St. Lombard, IL 60148 helpme@mechprod.com  
phone 630 | 953 | 4100 fax 630 | 953 | 4110 www.mechprod.com

Specifications subject to change

QC-4002-C

## Series 07 Operating Characteristics

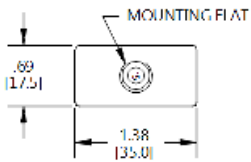


Trip curves presented are based on typical samples and are for reference. Please consult the factory for more specific application information. Trip curves are specified at 25°C / 77°F

## Series 07 Physical Configuration

### Case Sizes: Models 752 - 762

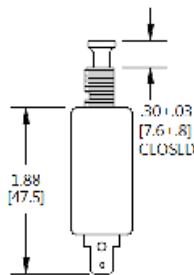
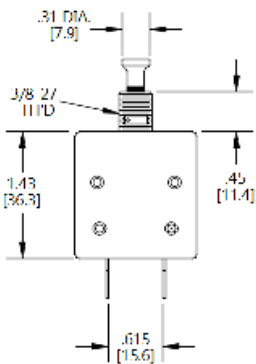
(See Part Numbering Guide)



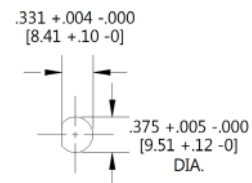
Models 752 and 762 offer single-pole, switchable circuit protection in a compact package size. Standard 0.250" quick-connect terminals are available, as is a "push-pull" actuator with imprinted amp rating. Through-the-panel mounting is facilitated by a 3/8"-27 diameter threaded bushing with a D-shaped flat for anti-rotational requirements.

Amp stamp and flat on bushing may be rotated 180° from that shown.

Recommended bushing torque 10 in-lbs.



Note: All dimensions are in inches [mm]



SUGGESTED PANEL MOUNTING HOLE

All Series 07 Models have the actuator button imprinted with the amp rating. The flat area on the panel cutout should be to the left of the actuator in vertical orientation.

### Mounting Hardware

(See Part Numbering Guide)



Knurlnut (Nylon)

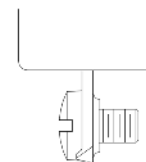
Palnut

Knurlnut

Hexnut

Instruction Plate

### Standard terminals on Model 772



Model 772, rated at 30A and 40A comes with standard #10-32 screw terminals



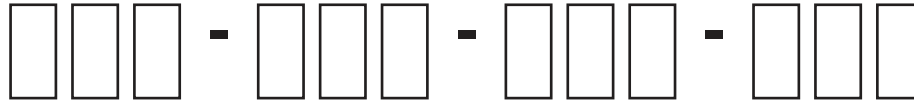
1112 N. Garfield St. Lombard, IL 60148 helpme@mechprod.com  
phone 630 | 953 | 4100 fax 630 | 953 | 4110 www.mechprod.com

Specifications subject to change

QC-4002-C

## Series 07 Part Numbering Guide

**P/N:**



Code	Model	Code	Variation	Code	Amp Ratings	Code	Hardware
752	UL489 listed CSA certified 5,000A interrupt @ 120VAC	001	3/8"-27 dia. Threaded mounting bushing w/ anti-rotation flat. 0.250" quick-connect terminals. White Actuator with trip indicator. Black ampere rating marking on actuator.	150	15.0A	051	Palnut / Knurlnut
		002	3/8"-27 dia. Threaded mounting bushing w/ anti-rotation flat. 0.250" quick-connect terminals. Terminals bent outbound 45 degrees White Actuator with trip indicator. Black ampere rating marking on actuator.	200	20.0A	054	Hexnut / Hexnut
762	UL1077 recognized, CSA certified: 10 to 20A 5,000A interrupt @ 120VAC 5 & 7A 1,000A interrupt @ 277VAC	001	3/8"-27 dia. Threaded mounting bushing w/ anti-rotation flat. 0.250" quick-connect terminals. White Actuator with trip indicator	050	5.0A*	087	Knurlnut / Hexnut / Instruction Plate
		012	3/8"-27 dia. Threaded mounting bushing w/ anti-rotation flat. 0.250" quick-connect terminals. Black actuator with trip indicator. White ampere rating marking on actuator.	070	7.0A*	098	Palnut / Knurlnut / Instruction Plate
	1,000 interrupt @ 120VAC	001	3/8"-27 dia. Threaded mounting bushing w/ anti-rotation flat. #10-32 UNF screw terminals. White Actuator with trip indicator. Black ampere rating marking on actuator.	100	10.0A		
				150	15.0A		
772				200	20.0A		
				300	30.0A*		
				400	40.0A*		

\*Contact Factory for amperage ratings 5-7A & 30-40A