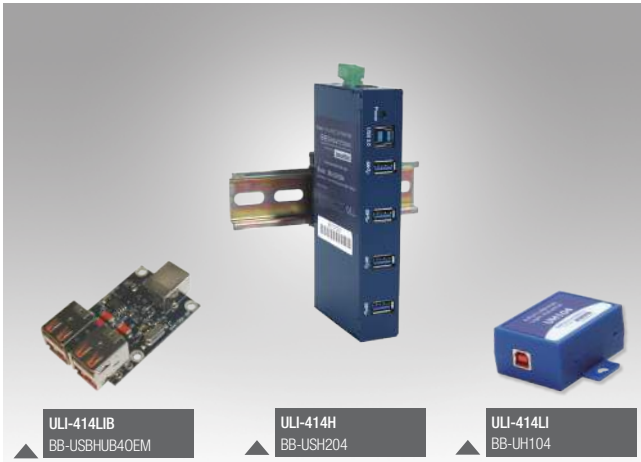


**ULI-414LIB**  
**ULI-414LI**  
**ULI-414I**  
**ULI-417I**  
**ULI-414CI**  
**ULI-417CI**  
**ULI-414H**  
**ULI-417H**

**BB-USBHUB40EM**  
**BB-UH104**  
**BB-UHR204**  
**BB-UHR207**  
**BB-UHR304**  
**BB-UHR307**  
**BB-USH204**  
**BB-USH207**

## Industrial USB 2.0 & 3.0 Hubs



### Features (model dependent)

- Expand one USB port to 4 or 7 USB ports
- USB 2.0 & USB 3.0
- ESD protection
- High retention USB connectors grip cables tight
- Wide operating temperature (USB 2.0 hubs)
- USB host port power or external PSU power
- Metal or plastic enclosures – desk, panel, DIN rail mount
- 4 kV isolation between upstream & downstream ports (models ULI-414CI, ULI-417CI)
- Compact, OEM open bare-board hub (model ULI-414LIB)



## Introduction

These Advantech USB 2.0 and 3.0 hubs are more robust than office-grade hubs. Isolation and ESD protections are ideal for electrically harsh environments. "High Retention" USB connectors hold standard USB cables tight – requiring up to 1.54 kg (3.4 lb) force to disconnect them. Model ULI-414LIB is suitable for OEM applications where space is limited and/or external packaging is not required. ULI-414H and ULI-417H feature SuperSpeed USB 3.0 with data rates up to 5 Gbps and 900 mA downstream power to connected peripherals.

## Specifications

### USB Technology

Model #:	Upstream Port:	Downstream Ports:	Data Rate, each port:	Standards:
ULI-414LIB*	(1) High retention, Type B female	(4) High retention, Type A female	1.5, 12, 480 Mbps	2.0, 1.1 (backward compatible)
ULI-414LI		(4) High retention, Type A female		
ULI-414I		(4) High retention, Type A female		
ULI-417I		(7) High retention, Type A female	12 Mbps** +	
ULI-414CI		(4) High retention, Type A female		
ULI-417CI		(7) High retention, Type A female		
ULI-414H#	(1) Type B	(4) Type A	Up to 5 Gbps	SuperSpeed 3.0 (2.0, 1.1 backward compatible)
ULI-417H#		(7) Type A		

\* When installed, ULI-414LIB appears as an unbranded USB hub.  
 \*\* Isolation limits speed to 12 Mbps. (ULI, 414CI, ULI417CI)  
 + Multi-transaction translator, 1 per port. (ULI, 414CI, ULI417CI)  
 # Supports xHCI USB controller. (ULI-414H, ULI-417H)

### Isolation & ESD Protections

Model #:	Isolation:	ESD Protection:	Surge Protection:
ULI-414LIB	4 kV	15 kV air, 8kV contact	± 0.5 kV DC ports, ± 1 kV signal ports
ULI-414LI			
ULI-414I			
ULI-417I			
ULI-414CI			
ULI-417CI			
ULI-414H	-	8 kV air	600 W
ULI-417H			

### Environmental

Model #:	Operating Temperature:	Storage Temperature:	Relative Humidity:
ULI-414LIB	-40 to +80 °C	-40 to +85 °C	0 to +95%, non-condensing
ULI-414LI			
ULI-414I			
ULI-417I			
ULI-414CI			
ULI-417CI			
ULI-414H	0 to +40 °C	-20 to +50 °C	0 to +85%, non-condensing
ULI-417H			

### Power

Model #:	Source:	Input Voltage:	Connection:	Consumption:	Downstream, per port:
ULI-414LIB	USB port†	5 Vdc	—	2.5 W, max.	100 mA
ULI-414LI			—		
ULI-414I	External PSU (required, not included)	External PSU: 10-30 Vdc	Terminal Block (3 pos., 5.08 mm spacing, 28-12 AWG, solid wire) OR Barrel Jack (locking, threaded, 5.5mm, center positive)	16 W	500 mA
ULI-417I				30 W	
ULI-414CI				16 W	
ULI-417CI		9-24 Vdc (redundant, TB input)	3-pin terminal block OR threaded barrel DC power jack	30 W	900 mA
ULI-414H‡				24 W	
ULI-417H‡				36 W	

† Check device to ensure USB bus power is adequate. If more power is required, Advantech offers external powered hubs.  
 ‡ Power LED indicator.

### Mechanical

Model #:	Enclosure:	Mounting:	Dimensions, mm:	Weight, gm:	USB Cable:
ULI-414LIB	Open board	OEM	34 x 60 x 17	22.7	Not included#
ULI-414LI	IP30 Plastic	Panel #	65 x 61 x 27§	49.9	
ULI-414I	IP30 metal (LEDs for Power, Port Ready)	Desk, DIN rail, panel #	168.2 x 86.3 x 35.1§	64.0	Included, 1.8m
ULI-417I			233.2 x 119.4 x 35.1§		
ULI-414CI			168.2 x 86.3 x 35.1§		
ULI-417CI			233.2 x 119.4 x 35.1§		
ULI-414H	Industrial grade, metal	DIN rail, panel	138.8 x 68.5 x 25	600	Included, 2.0 m
ULI-417H				620	

# Mounting kit included.  
 § Enclosure with brackets.  
 † A standard USB cable is required to connect to PC.

### Meantime Between Failures (MTBF)

- Calculation Method: MIL217F Parts Count Reliability Prediction

Model #:	Hours:	Model #:	Hours:
ULI-414LIB	552747	ULI-414CI	143330
ULI-414LI		ULI-417CI	151173
ULI-414I	190999	ULI-414H	588858
ULI-417I	211773	ULI-417H	935103

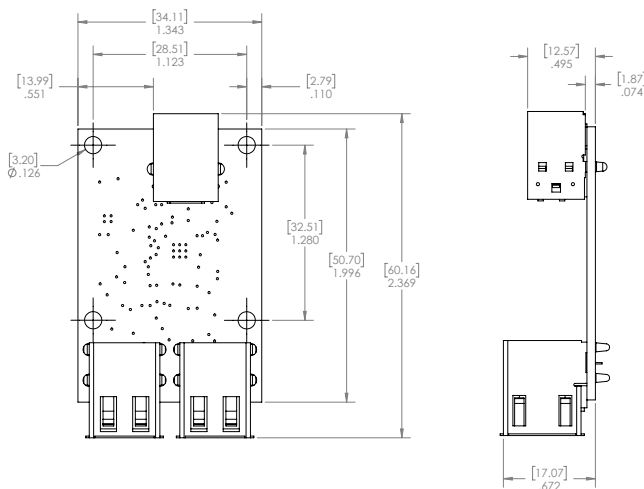
**ULI-414LIB** BB-USBHUB40EM  
**ULI-414LI** BB-UH104  
**ULI-414I** BB-UHR204  
**ULI-417I** BB-UHR207  
**ULI-414CI** BB-UHR304  
**ULI-417CI** BB-UHR307  
**ULI-414H** BB-USH204  
**ULI-417H** BB-USH207

## Regulatory/Approvals/Certifications

Model #:	Approvals:	CE Directives:	CE Standards:	Standards - other:
ULI-414LIB	FCC			EN 61000-6-1 – Generic Immunity Standard for Residential, Commercial and Light-industrial Environments
ULI-414LI				
ULI-414I	FCC, UL C1/D2	2014/30/EU – Electromagnetic Compatibility	EMC: EN 55032 Class B – Electromagnetic Compatibility of Multimedia Equipment – Emissions Requirements	EN 61000-6-1 – Generic Immunity Standard for Residential, Commercial and Light-industrial Environments
ULI-417I	FCC, KCC, UL C1/D2			
ULI-414CI	FCC, UL C1/D2	2011/65/EU amended by (EU) 2015/863 – Reduction of Hazardous Substances (RoHS)	EN 55024 – Information Technology Equipment – Immunity Characteristics – Limits and Methods of Measurement	EN 61000-6-3 +A1 – Generic Emissions Standard for Residential, Commercial and Light-industrial Environments (Class B)
ULI-417CI	FCC, KCC, UL C1/D2			
ULI-414H	FCC Class B, CE, KCC	2012/19/EU – Waste Electrical and Electronic Equipment (WEEE)	EMC: EN 55032 Class A – Electromagnetic Compatibility of Multimedia Equipment – Emission Requirements	
ULI-417H				
			EN 55024 – Information Technology Equipment – Immunity Characteristics – Limits and Methods of Measurement	

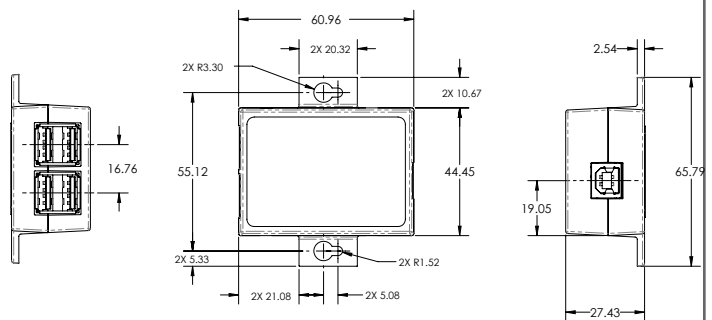
## Dimensions - ULI-414LIB

Unit = mm / in



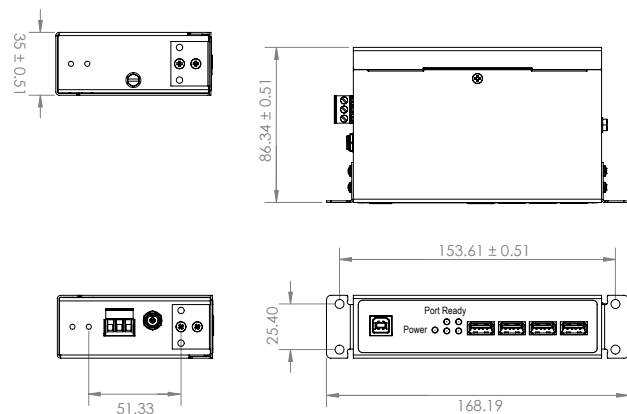
## Dimensions - ULI-414LI

Unit = mm



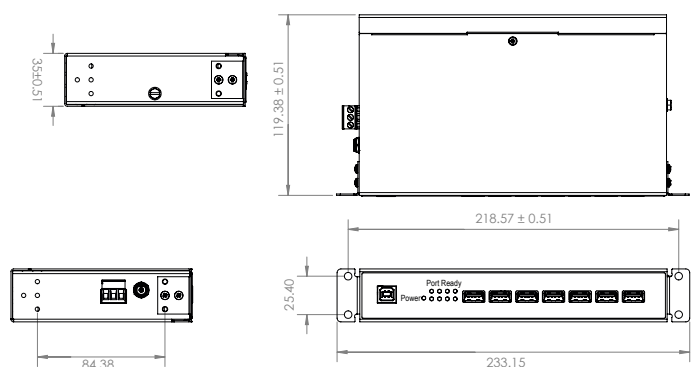
## Dimensions - ULI-414I, ULI-414CI

Unit = mm



## Dimensions - ULI-417I, ULI-417CI

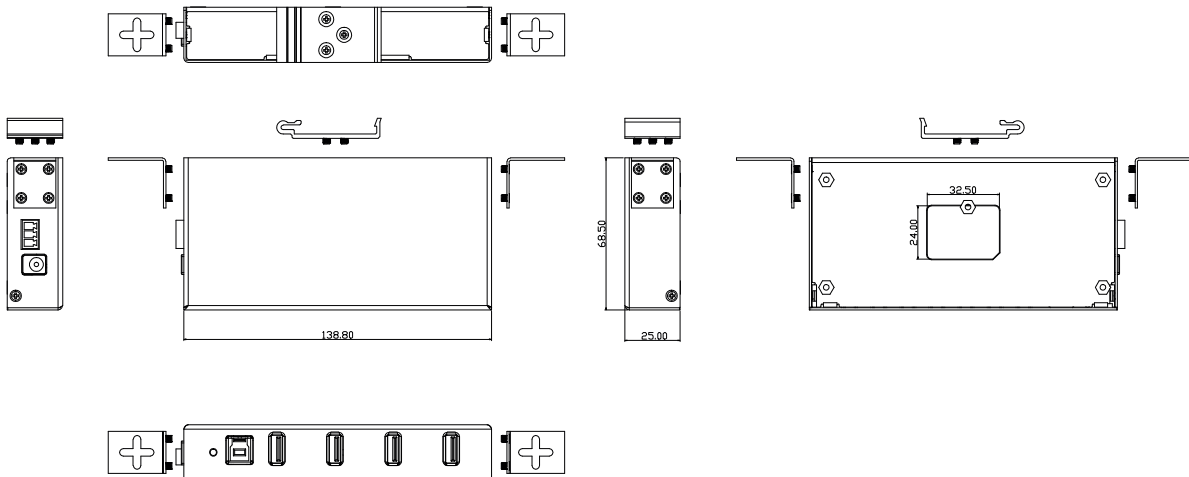
Unit = mm



<b>ULI-414LIB</b>	<b>BB-USBHUB40EM</b>
<b>ULI-414LI</b>	<b>BB-UH104</b>
<b>ULI-414I</b>	<b>BB-UHR204</b>
<b>ULI-417I</b>	<b>BB-UHR207</b>
<b>ULI-414CI</b>	<b>BB-UHR304</b>
<b>ULI-417CI</b>	<b>BB-UHR307</b>
<b>ULI-414H</b>	<b>BB-USH204</b>
<b>ULI-417H</b>	<b>BB-USH207</b>

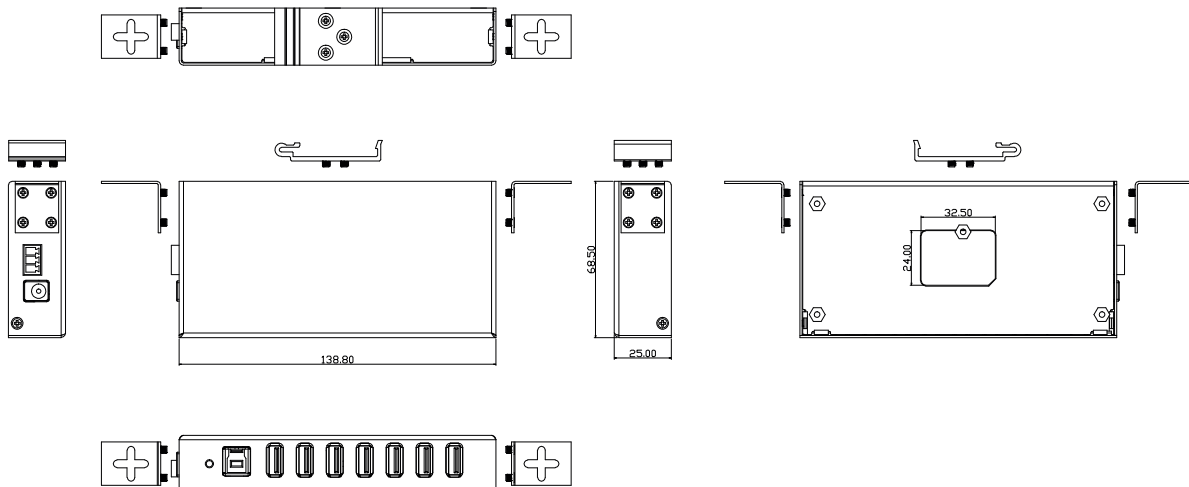
## Dimensions - ULI-414H

Unit = mm



## Dimensions - ULI-417H

Unit = mm

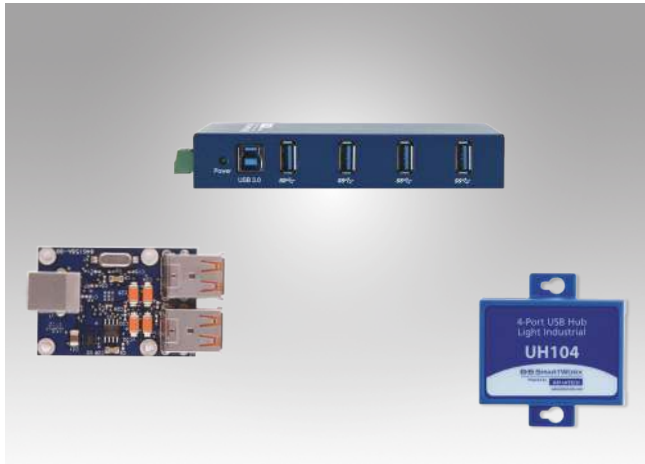


## Ordering Information

Model Number	Part Number to Order	Description
<b>ULI-414LIB</b>	BB-USBHUB40EM	Industrial USB 2.0 Hub, 4-port, OEM open board module, High retention USB ports, USB port power. <i>(USB cable required.)</i>
<b>ULI-414LI</b>	BB-UH104	Industrial USB 2.0 Hub, 4-port, High retention USB, USB port power. <i>(USB cable required. Mounting kit included.)</i>
<b>ULI-414I</b>	BB-UHR204	Industrial USB 2.0 Hub, 4-port, High retention USB, USB or PSU power. <i>(1.8m USB cable &amp; mounting kit included; PSU sold separately.)</i>
<b>ULI-417I</b>	BB-UHR207	Industrial USB 2.0 Hub, 7-port, High retention USB, External power. <i>(1.8m USB cable &amp; mounting kit included; PSU sold separately.)</i>
<b>ULI-414CI</b>	BB-UHR304	Industrial USB 2.0 Hub, 4-port, High retention USB, 2kV Isolation, External power. <i>(1.8m USB cable &amp; mounting kit included; PSU sold separately.)</i>
<b>ULI-417CI</b>	BB-UHR307	Industrial USB 2.0 Hub, 7-port, High retention USB, 2kV Isolation, External power. <i>(1.8m USB cable &amp; mounting kit included; PSU sold separately.)</i>
<b>ULI-414H</b>	BB-USH204	Industrial USB 3.0 Hub, 4-port, USB or PSU power. <i>(2m USB cable included; PSU sold separately.)</i>
<b>ULI-417H</b>	BB-USH207	Industrial USB 3.0 Hub, 7-port, External power. <i>(2m USB cable included; PSU sold separately.)</i>

# ULI-410 Series Selection Guide

## Industrial USB 2.0 and 3.0 Hubs



### Common Features

- Expand one USB port to 4 or 7 USB ports
- USB 2.0 & USB 3.0
- ESD protection
- Wide operating temperature (USB 2.0 hubs)
- USB host port power or external PSU power
- Metal or plastic enclosures – desk, panel, DIN rail mount
- 4 kV isolation between upstream & downstream ports (models ULI-414CI, ULI-417CI)
- Compact, OEM open bare-board hub (model ULI-414LIB)

### Industrial USB 2.0 & 3.0 Hubs Comparison Table

Model Number	ULI-414LIB	ULI-414LI	ULI-414I	ULI-417I	ULI-414CI	ULI-417CI	ULI-414H	ULI-417H
Part Number to Order	BB-USBHUB40EM	BB-UH104	BB-UHR204	BB-UHR207	BB-UHR304	BB-UHR307	BB-USH204	BB-USH207
Description	USB 2.0/1.1, OEM Open Board Module	USB 2.0/1.1 Hub, 4-port Miniature	USB 2.0/1.1 Hubs, 4-port UL C1/D2 & 7-port		USB 2.0/1.1 Hubs, 4-port UL C1/D2 & 7-port Isolated		USB 3.0 SuperSpeed Hubs, 4-port & 7-port	
Upstream Port	1							
Upstream Connector	USB Type B female, high-retention							
Downstream Port/s	4		7		4		7	
Downstream Connector	USB Type A female							
Data Rate, max.	1.5, 12, 480 Mbps		480 Mbps		12 Mbps		5 Gbps	
USB Standards	2.0, 1.1 (backwards compatible)							
LED Indicators	Power, Port Ready							
ESD Protection	15 kV air, 8 kV contact							
Surge Protection	±0.5 kV dc ports, ±1 kV signal ports							
Isolation, Optical	4 kV							
Operating Temperature	-40 to +80 °C							
Power Source	USB port		USB port or external PSU		External PSU			
Power Input	5 Vdc		USB port: 5 Vdc External PSU: 10-30 Vdc		10-30 Vdc		9-24 Vdc	
Power Connector Options	–		Terminal block (3-position, 5.08mm spacing, 28-12 AWG, solid wire) OR barrel jack (locking, threaded, 5.5 mm, center positive)				3-pin terminal block OR threaded barrel DC power jack	
Downstream Power	100 mA		500 mA		900 mA			
Enclosure	Open board		IP30 plastic		IP30 metal		Industrial-grade metal	
Mounting Installation	OEM		Panel		Desk, DIN rail, panel		DIN rail, panel	
Dimensions, mm	34 x 60 x 17		65 x 61 x 27 (with brackets)		168.2 x 86.3 x 35.1 (with brackets)		233.2 x 119.4 x 35.1 (with brackets)	
MTBF (MIL217F), hours	552747		190999		211773		143330	
Regulatory / Approvals / Certifications	FCC, CE							
	2014/30/EU – Electromagnetic Compatibility 2011/65/EU amended by (EU) 2015/863 – Reduction of Hazardous Substances (RoHS) 2012/19/EU – Waste Electrical and Electronic Equipment (WEEE)							
	EN 55032 Class B – Electromagnetic Compatibility of Multimedia Equipment – Emissions Requirements EN 55024 – Information Technology Equipment – Immunity Characteristics – Limits and Methods of Measurement						EN 55032 Class A – Electromagnetic Compatibility of Multimedia Equipment – Emission Requirements EN 55024 – Information Technology Equipment – Immunity Characteristics – Limits and Methods of Measurement	
	–		UL C1/D2* (ULI-414I & ULI-417I)		KCC		UL C1/D2* (ULI-414CI & ULI-417CI)	
	EN 61000-6-1 – Generic Immunity Standard for Residential, Commercial & Light-industrial Environments		EN 61000-6-1 – Generic Immunity Standard for Residential, Commercial & Light-industrial Environments EN 61000-6-3 +A1 (B) – Generic Emissions Standard for Residential, Commercial & Light-industrial Environments		–			



\*UL C1/D2  
#E245458