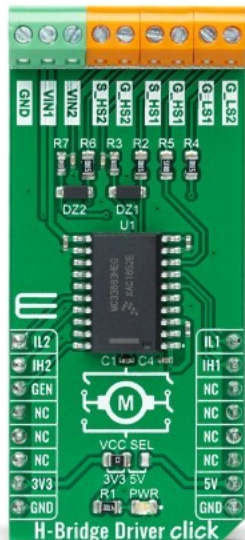


H-Bridge Driver Click



PID: MIKROE-4696

H-Bridge Driver Click is a compact add-on board that contains an H-bridge gate driver, also known as a full-bridge pre-driver. This board features the [MC33883](#), an H-Bridge gate driver with an integrated charge pump and independent high and low side gate drive channels from [NXP Semiconductors](#). The gate driver channels are independently controlled by four separate input pins, allowing the device to be optionally configured as two independent high side gate drivers and two independent low side gate drivers. Gate driver outputs can source and sink up to 1.0A peak current pulses, permitting large gate-charge MOSFETs to be driven and/or high pulse-width modulation (PWM) frequencies to be utilized. This Click board™ is suitable for automotive engine applications (electric pumps), energy storage systems (ESS), uninterruptible power supply (UPS), and more.

H-Bridge Driver Click is supported by a [mikroSDK](#) compliant library, which includes functions that simplify software development. This [Click board™](#) comes as a fully tested product, ready to be used on a system equipped with the [mikroBUS™](#) socket.

Mikroe produces entire development toolchains for all major microcontroller architectures.
 Committed to excellency, we are dedicated to helping engineers bring the project development up to speed and achieve outstanding results.



ISO 27001: 2013 certification of informational security management system.
 ISO 14001: 2015 certification of environmental management system.
 OHSAS 18001: 2008 certification of occupational health and safety management system.



ISO 9001: 2015 certification of quality management system (QMS).

Specifications

Type	Brushed
Applications	Can be used for automotive engine applications (electric pumps), energy storage systems (ESS), uninterruptible power supply (UPS), and more.
On-board modules	MC33883 - H-bridge gate driver (or full-bridge pre-driver) with integrated charge pump and independent high and low-side driver channels from NXP Semiconductors
Key Features	Full-bridge pre-driver, built-in high side charge pump, UVLO and OVLO features, Sleep mode, PWM up to 100kHz, and more.
Interface	GPIO
ClickID	No
Compatibility	mikroBUS
Click board size	L (57.15 x 25.4 mm)
Input Voltage	3.3V or 5V, External

Resources

[mikroBUS™](#)

[mikroSDK](#)

[Click board™ Catalog](#)

[Click Boards™](#)

Downloads

[H-Bridge Driver click schematic](#)

[MC33883 datasheet](#)

[H-Bridge Driver click 2D and 3D files](#)

[H-Bridge Driver click example on Libstock](#)

Mikroe produces entire development toolchains for all major microcontroller architectures.

Committed to excellency, we are dedicated to helping engineers bring the project development up to speed and achieve outstanding results.



ISO 27001: 2013 certification of informational security management system.
 ISO 14001: 2015 certification of environmental management system.
 OHSAS 18001: 2008 certification of occupational health and safety management system.



ISO 9001: 2015 certification of quality management system (QMS).