



ELECTRONICS, INC.
 44 FARRAND STREET
 BLOOMFIELD, NJ 07003
 (973) 748-5089
<http://www.nteinc.com>

NTE30115 LED – Tri Color 5mm High Bright Red/Green/Blue

Features:

- RoHS Compliant
- AlGaInP Red/Green/Blue LED
- 5.0mm x 8.7mm x 21mm
- High Luminous Intensity, High Reliability and Long Life
- Common Cathode Pin Configuration

Applications:

- LCD Backlight Instruction Lighting on Car Instrument and the Electronic Products Used in Surface Mounted Construction.

Absolute Maximum Ratings: ($T_A = +25^{\circ}\text{C}$ unless otherwise specified)

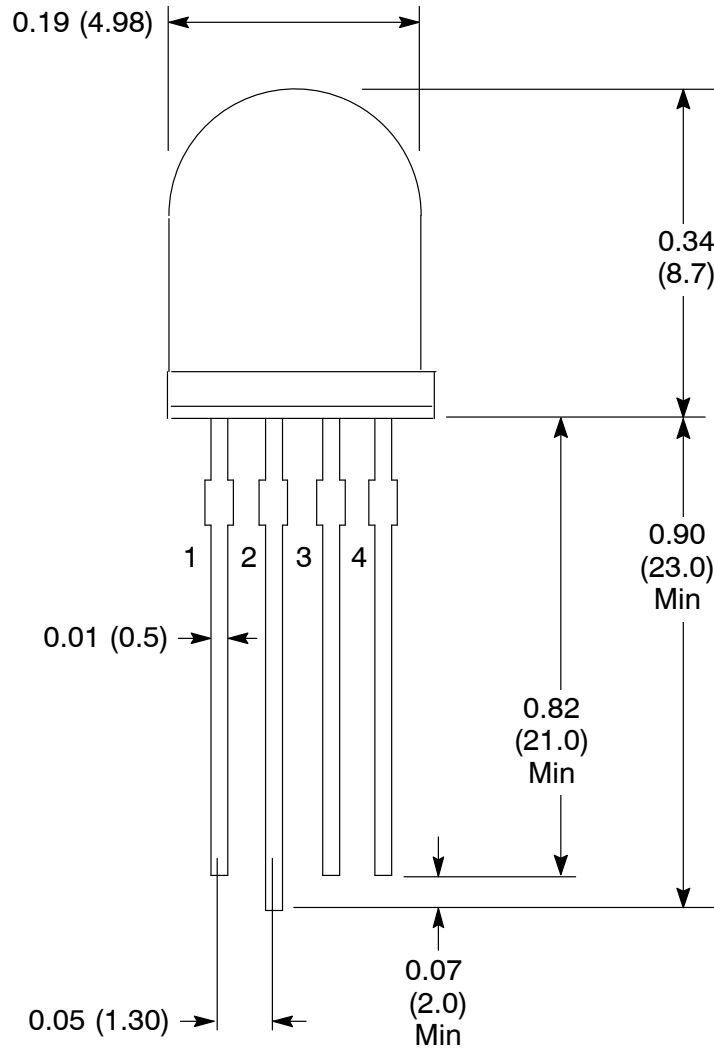
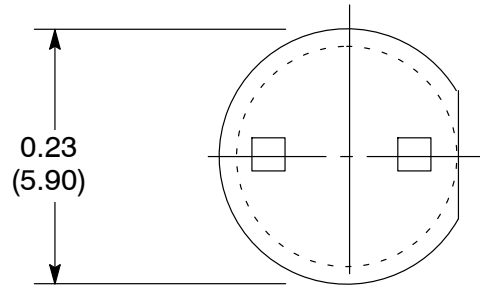
Power Dissipation, P_D	80mW
Pulse Forward Current (Note 1), I_{FP}	100mA
Peak Forward Current, I_F	20mA
Reverse Voltage, V_R	5V
Operating Temperature Range, T_{opr}	-30°C to $+85^{\circ}\text{C}$
Storage Temperature Range, T_{stg}	-40°C to $+85^{\circ}\text{C}$

Note 1. Pulse Width: Max 10ms, Duty Ratio: Max 1/10.

Electro-Optical Characteristics: ($T_A = +25^{\circ}\text{C}$ unless otherwise specified)

Parameter	Symbol	Test Conditions	Min	Typ	Max	Unit
View Angle of Half Power, R/B	$2\theta_{1/2}$		–	30	–	deg
Forward Voltage	V_F	$I_F = 20\text{mA}$	1.8	2.2	2.6	V
Red						
Green						
Blue	2.8	3.2	3.6	V		
Reverse Current, R/B	I_R	$V_R = 5\text{V}$	–	10	–	μA
Luminous Intensity	I_V	$I_F = 20\text{mA}$	2000	4000	–	mcd
Red						
Green						
Blue	4000	6000	–	mcd		
Blue	2000	4000	–	mcd		
Dominant Wave Length (Note 2)	$\lambda_d(\text{HUE})$	$I_F = 20\text{mA}$	615	625	630	nm
Red						
Green						
Blue	455	460	470	nm		





1. Red +
2. Common Cathode Lead -
3. Blue +
4. Green +