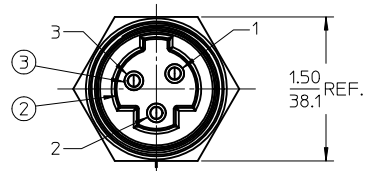
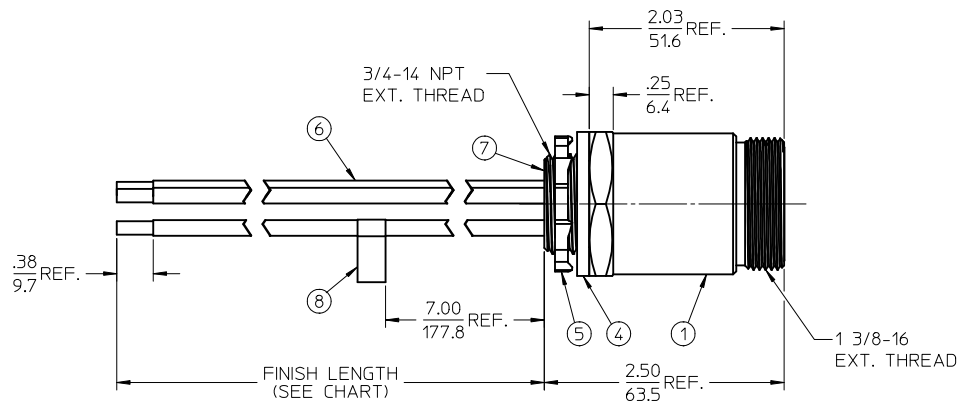
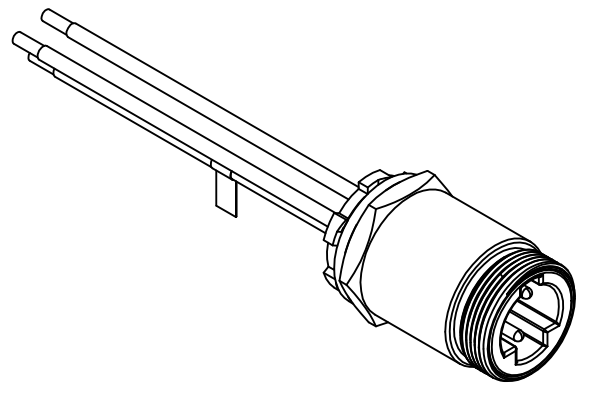
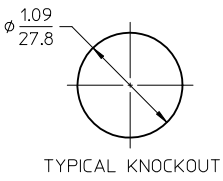


MATERIAL NUMBER	OLD PART NUMBER	FINISH LENGTH
1300660259	CR3D06A30M005	1.64' +1.75'/-0 [0.5M +44.5'/-0]



1	BLACK
2	GREEN
3	WHITE

WIRING DIAGRAM



NOTES:

1. MATERIAL: SEE TABLE
2. FINISHES: SEE TABLE
3. PACKAGING: PART IS PACKED IN POLY BAG.
4. FLAG LABEL LOCATED ON GREEN WIRE.
5. MATES WITH: QC 3 POLE FEMALE CABLE ASSEMBLY, ALT. KEY.
6. ELECTRICAL SPECIFICATIONS:
VOLTAGE RATING: 600V AC/DC
CURRENT RATING: 30 AMPS

8	1	FLAG LABEL	VINYL	YELLOW
7	A/R	POTTING	EPOXY	BLACK
6	3	#10-1 WIRE THHN	PVC JACKET	SEE WIRING DIAGRAM
5	1	LOCKNUT	STEEL	ZINC PLATED
4	1	GASKET	NEOPRENE	BLACK
3	3	PIN CONTACT	COPPER ALLOY	GOLD PLATED
2	1	MALE INSERT, 3 POLE	PVC	BLACK
1	1	RECEPTACLE SHELL	ALUMINUM	BLACK ANODIZED
ITEM	QTY.	DESCRIPTION	MATERIAL	FINISH

INITIAL RELEASE	EC NO: MNA2010-0433	DRWN:CLYORK 2010/01/19	CHKD:WOODMAN 2010/01/19	APPR:DTITUS 2010/01/20
DESCRIPTION	QUALITY SYMBOLS	$\nabla=0$ $\nabla=0$		

GENERAL TOLERANCES (UNLESS SPECIFIED)	DIMENSION STYLE	SCALE	DESIGN UNITS	THIRD ANGLE PROJECTION
	IN/MM	1:1	INCH	
4 PLACES ± --- ± ---	mm INCH	DRAWN BY	DATE	TITLE
3 PLACES ± --- ± ---		CLYORK	2010/01/18	BRAD POWER MALE, 3/4" NPT, 3 POLE, DC RECEPTACLE ASSEMBLY
2 PLACES ± --- ± .010		CHECKED BY	DATE	
1 PLACE ± 0.3 ± ---		BWOODMAN	2010/01/19	
ANGULAR ±1/2°		APPROVED BY	DATE	
		DTITUS	2010/01/20	
DRAFT WHERE APPLICABLE MUST REMAIN WITHIN DIMENSIONS	SEE CHART	MATERIAL NO.	DOCUMENT NO.	SHEET NO.
			SD-130066-062	1 OF 1

MATERIAL NO.		DOCUMENT NO.	SHEET NO.
SEE CHART		SD-130066-062	1 OF 1
THIS DRAWING CONTAINS INFORMATION THAT IS PROPRIETARY TO MOLEX INCORPORATED AND SHOULD NOT BE USED WITHOUT WRITTEN PERMISSION			