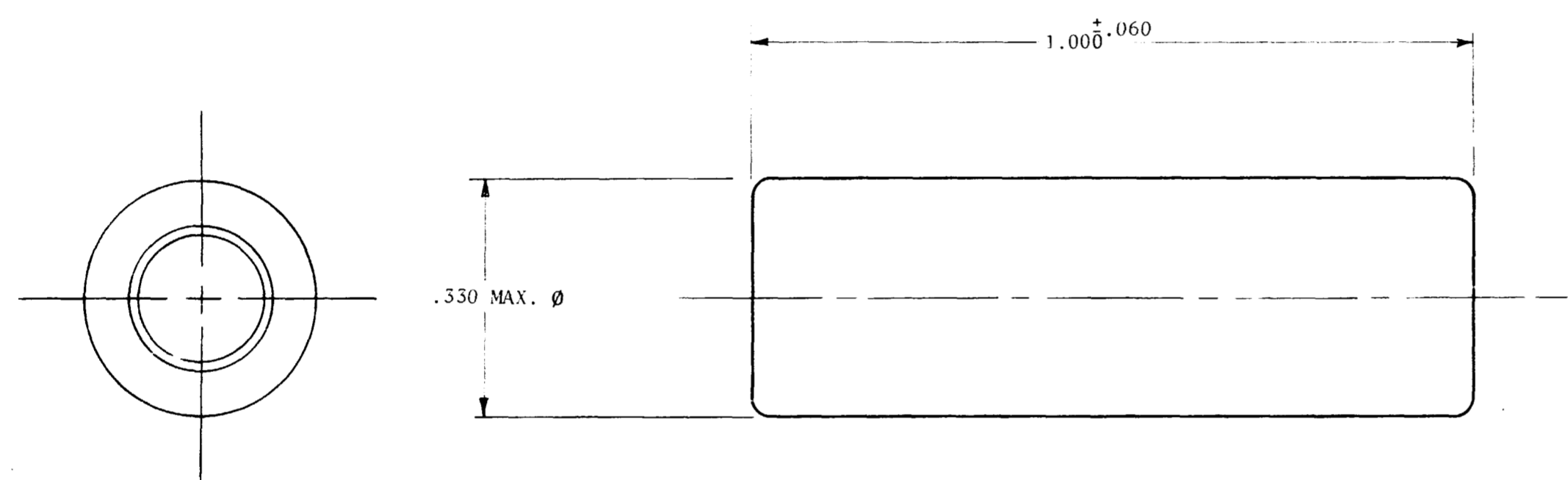


N/C 0410-241-0406

REVISIONS			
SYM	DESCRIPTION	DATE	APPROVED
N/C	NEW RELEASE PER E.O. A 3518.		



**NOTE:**

3. MATERIAL: SILICONE RUBBER.
2. INSERT SLEEVE REDUCES SIZE 6 AWG SEAL TO ACCEPT SIZE 10 AWG WIRE. (.190/.205 O.D)
1. DIMENSIONS ARE IN INCHES UNLESS OTHERWISE SPECIFIED.

SIGNATURE & DATE		INSERT, SEAL  ENVELOPE.	CP	MATL CODE
DR	J. HOFFMAN 6/7/85.		<b>The Deutsch Company</b> DEUTSCH I.P.D. 37140 INDUSTRIAL AVE HEMET, CALIF 92343	
CHK			B	0410-241-0406
PE	<i>J. Hoffmann 6/10/85</i>			CODE 11139
APPD			DWG SIZE	
SCALE	NONE	WT		