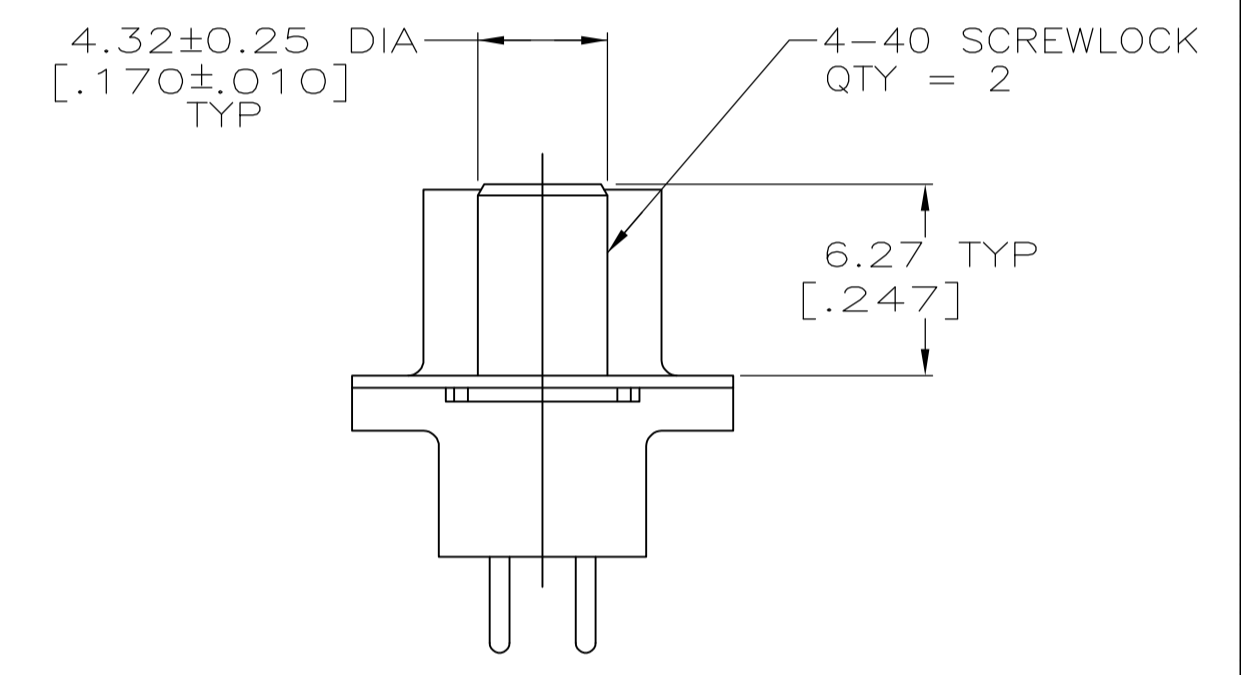
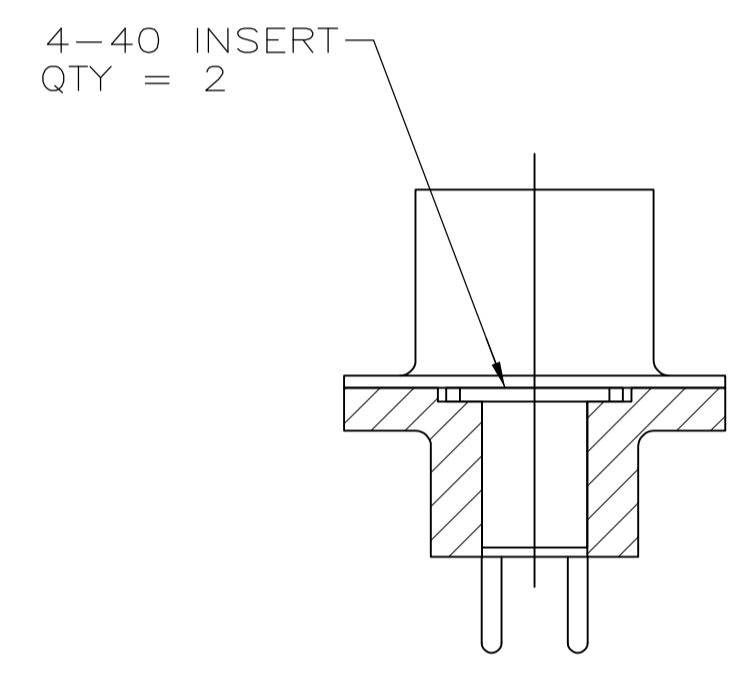
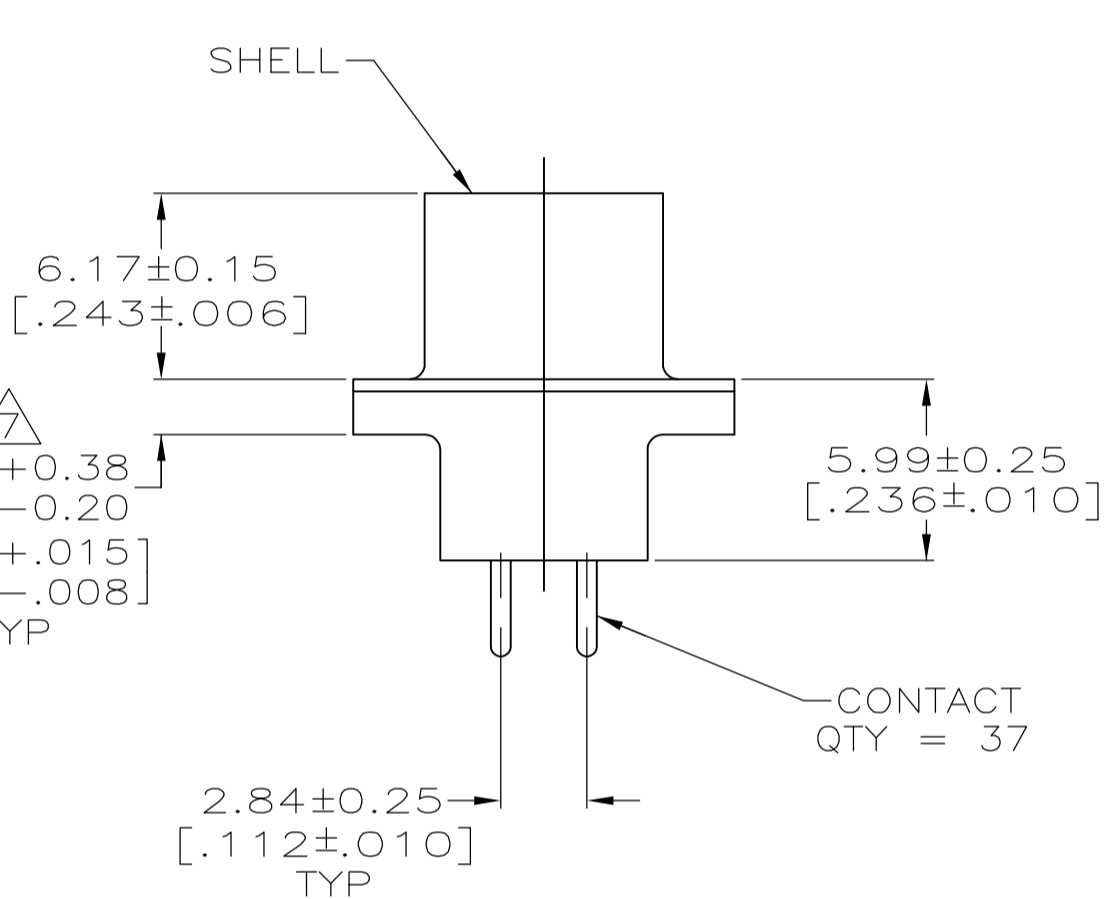
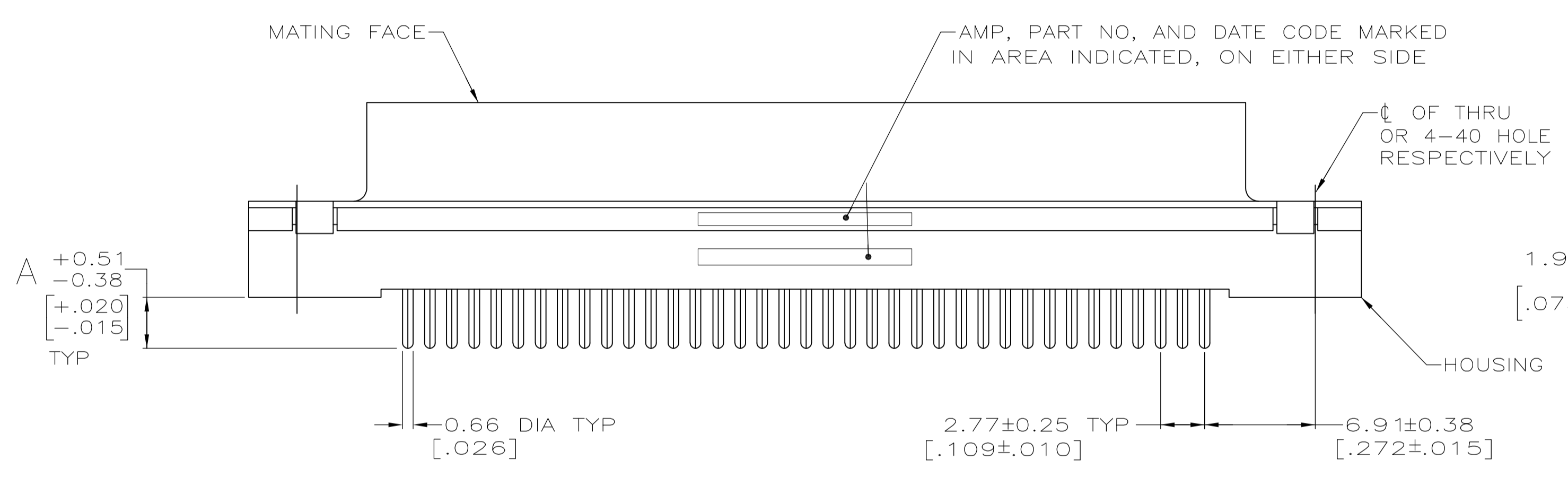
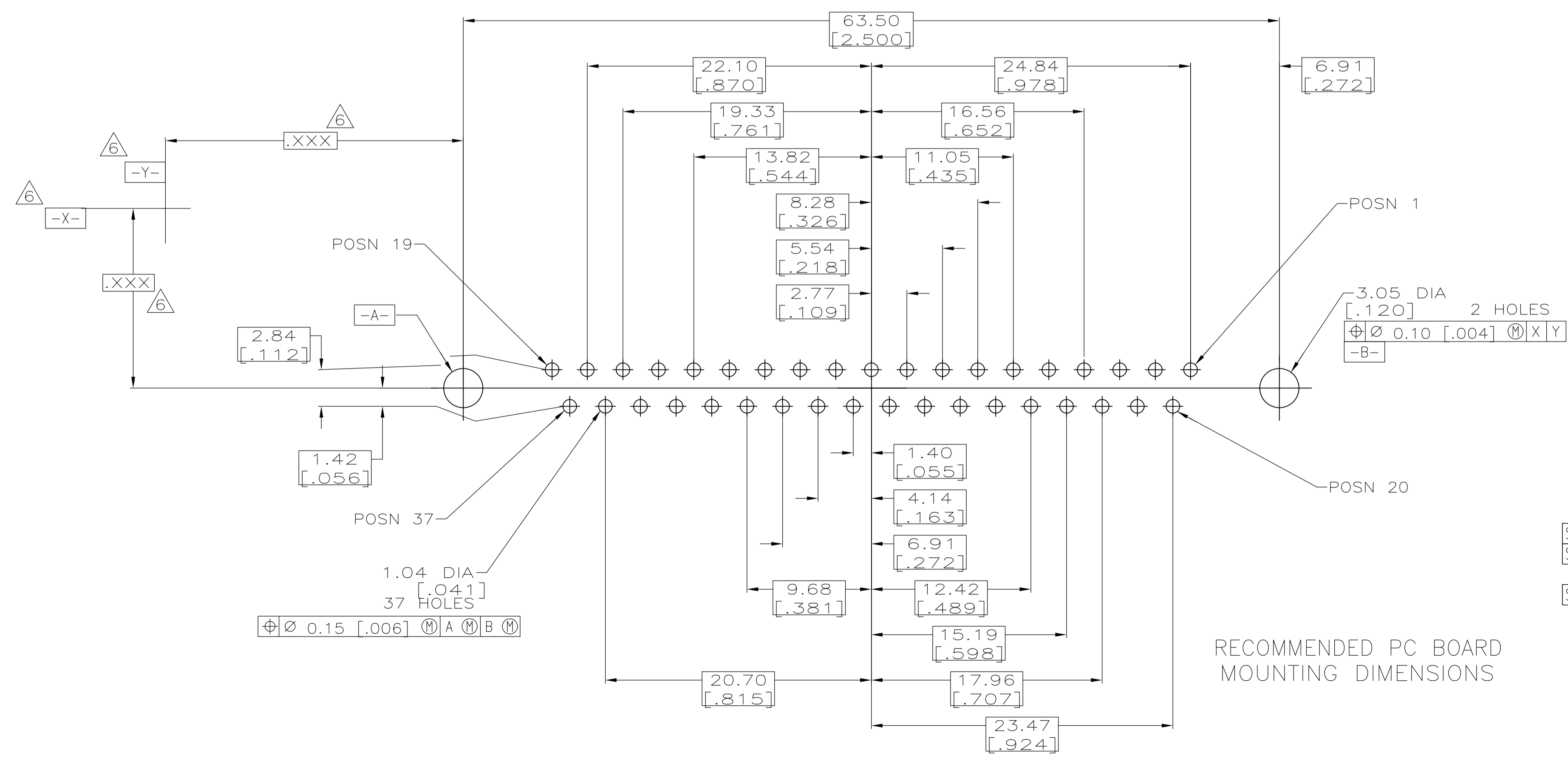


- △1 HOUSING: BLACK POLYESTER, UL 94V-0 RATED; CONTACT: PHOSPHOR BRONZE
SHELL: CARBON STEEL; SCREWLOCK: ZINC; INSERT: BRASS.
- △2 NOTE DELETED.
- △3 GOLD FLASH FOR A LENGTH OF 2.54[.100] MIN FROM MATING END,
2.54µm[.000100] MIN TIN OR TIN-LEAD FOR A LENGTH OF DIMENSION A FROM
OPPOSITE END, BOTH OVER 1.27µm[.000050] MIN NICKEL.
- △4 0.76µm[.000030] MIN GOLD FOR A LENGTH OF 2.54[.100] MIN FROM MATING END,
2.54µm[.000100] MIN TIN OR TIN-LEAD FOR A LENGTH OF DIMENSION A FROM
OPPOSITE END, BOTH OVER 1.27µm[.000050] MIN NICKEL.
- △5 5.08µm[.000200] MIN TIN OVER 2.54µm[.000100] MIN COPPER.
- △6 DATUMS AND BASIC DIMENSIONS ESTABLISHED BY CUSTOMERS.
- △7 2.79[.110] MAX IN SHELL TAB CLINCH AREAS.



DETAIL D

DETAIL E



RECOMMENDED PC BOARD MOUNTING DIMENSIONS

DESCRIPTION	QTY	DETAIL	REVISION	PART NUMBER
OBSOLETE	6.35 [.250]	4-40 SCREWLOCK (DETAIL E)	△4	1-747301-8
OBSOLETE	6.35 [.250]	4-40 SCREWLOCK (DETAIL E)	△3	1-747301-7
	4.32 [.170]	4-40 SCREWLOCK (DETAIL E)	△4	1-747301-6
OBSOLETE	4.32 [.170]	4-40 SCREWLOCK (DETAIL E)	△3	1-747301-5
	3.18 [.125]	4-40 SCREWLOCK (DETAIL E)	△4	1-747301-4
OBSOLETE	3.18 [.125]	4-40 SCREWLOCK (DETAIL E)	△3	1-747301-3
OBSOLETE	6.35 [.250]	4-40 INSERT (DETAIL D)	△4	1-747301-2
OBSOLETE	6.35 [.250]	4-40 INSERT (DETAIL D)	△3	1-747301-1
OBSOLETE	4.32 [.170]	4-40 INSERT (DETAIL D)	△4	1-747301-0
OBSOLETE	4.32 [.170]	4-40 INSERT (DETAIL D)	△3	747301-9
	3.18 [.125]	4-40 INSERT (DETAIL D)	△4	747301-8
	3.18 [.125]	4-40 INSERT (DETAIL D)	△3	747301-7
OBSOLETE	6.35 [.250]	-	△4	747301-6
OBSOLETE	6.35 [.250]	-	△3	747301-5
SUPERSEDED BY 747301-2	4.32 [.170]	-	△4	747301-4
SUPERSEDED BY 747301-4	4.32 [.170]	-	△3	747301-3
	3.18 [.125]	-	△4	747301-2
SUPERSEDED BY 747301-2	3.18 [.125]	-	△3	747301-1

THIS DRAWING IS A CONTROLLED DOCUMENT.		DIN J. McCLINTON 12-4-89		Tyco Electronics Corporation Harrisburg, PA 17105-3608	
DIMENSIONS: INCHES		TOLERANCES UNLESS OTHERWISE SPECIFIED:		NAME: Tyco Electronics	
0 PLC	± .005	1 PLC	± .005	PRODUCT SPEC: RECEPTACLE ASSEMBLY, SIZE 4, 37 POSN, VERTICAL, FRONT METAL SHELL, AMPLIMITE HD-20	
1 PLC	± .005	2 PLC	± .005	APPLICATION SPEC: 108-40025	
2 PLC	± .005	3 PLC	± .005	SIZE: 114-40023	
3 PLC	± .005	4 PLC	± .005	SCALE: 4:1	
4 PLC	± .005	ANGLES	± .005	SHEET 1 OF 1	
MATERIAL	SEE TABLE	FINISH	SEE TABLE	RESTRICTED TO: CUSTOMER DRAWING	
		WEIGHT: -		DRAWING NO: 747301	
		REV: -		SCALE: 4:1	