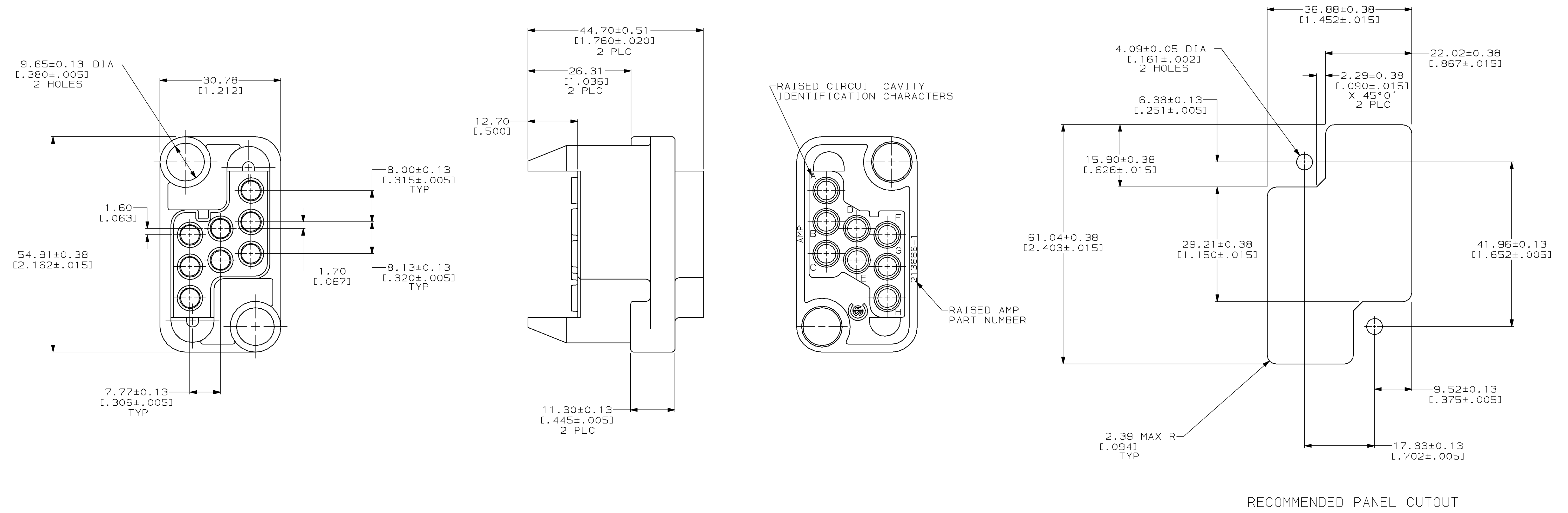


REVOLUTIONS		DATE	BY	APPV
0	RLSE -1 PER NPR 5364 WAS 95-5018-11-1	06/23/95	-	-
A	REV PER EC 0020-136-96	04 MAR 96	BC	MM
B	REV PER EC 0020-417-96	14 MAY 96	MB	MM



- THIS PLUG HOUSING MATES WITH RECEPTACLE HOUSING PART NUMBER 213500-3.
  - FOR MOUNTING SCREW INFORMATION SEE DRAWING 208211.
  - THIS HOUSING ACCEPTS (8) 3.18 [0.125] DIA POWERBAND SOCKET CONTACTS.
- ▲ POLYESTER, BLUE.

213886-1  
PART NUMBER

<small>THIS DRAWING IS A CONTROLLED DOCUMENT FOR AMP INCORPORATED. IT IS SUBJECT TO CHANGE AND THE CONTROLLING ENGINEERING DEPARTMENT SHALL BE CONTACTED FOR THE LATEST REVISION.</small>		DWN M. BINNER 6-23-95 CHK R. STONE 6-28-95 APPV M. McALONIS 6-28-95	AMP Incorporated Harrisburg, PA 17105-3608
DIMENSIONS: mm (INCHES)	TOLERANCES UNLESS OTHERWISE SPECIFIED: 0 PLC ±- 1 PLC ±- 2 PLC ±0.25 [.010] 3 PLC ±- 4 PLC ±- ANGLES 10°/30°	NAME HOUSING, PLUG, DRAWER CONNECTOR, 8 POSITION, METRIMATE	SIZE A1
MATERIAL ▲	FINISH -	APPLICATION SPEC - WEIGHT -	CAGE CODE 00779 DRAWING NO 213886 SCALE 2:1
CUSTOMER DRAWING		SHEET 1 OF 1	REV B