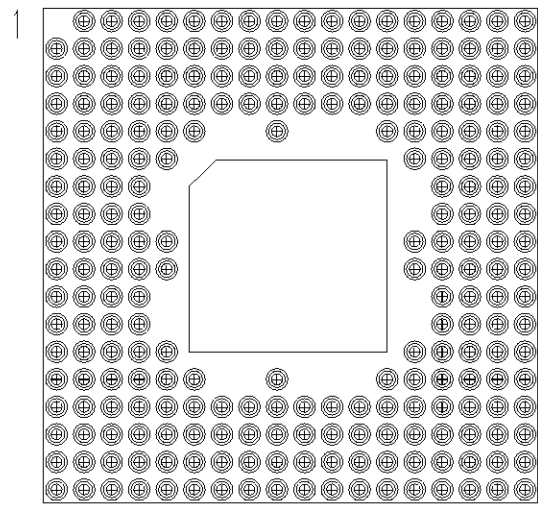
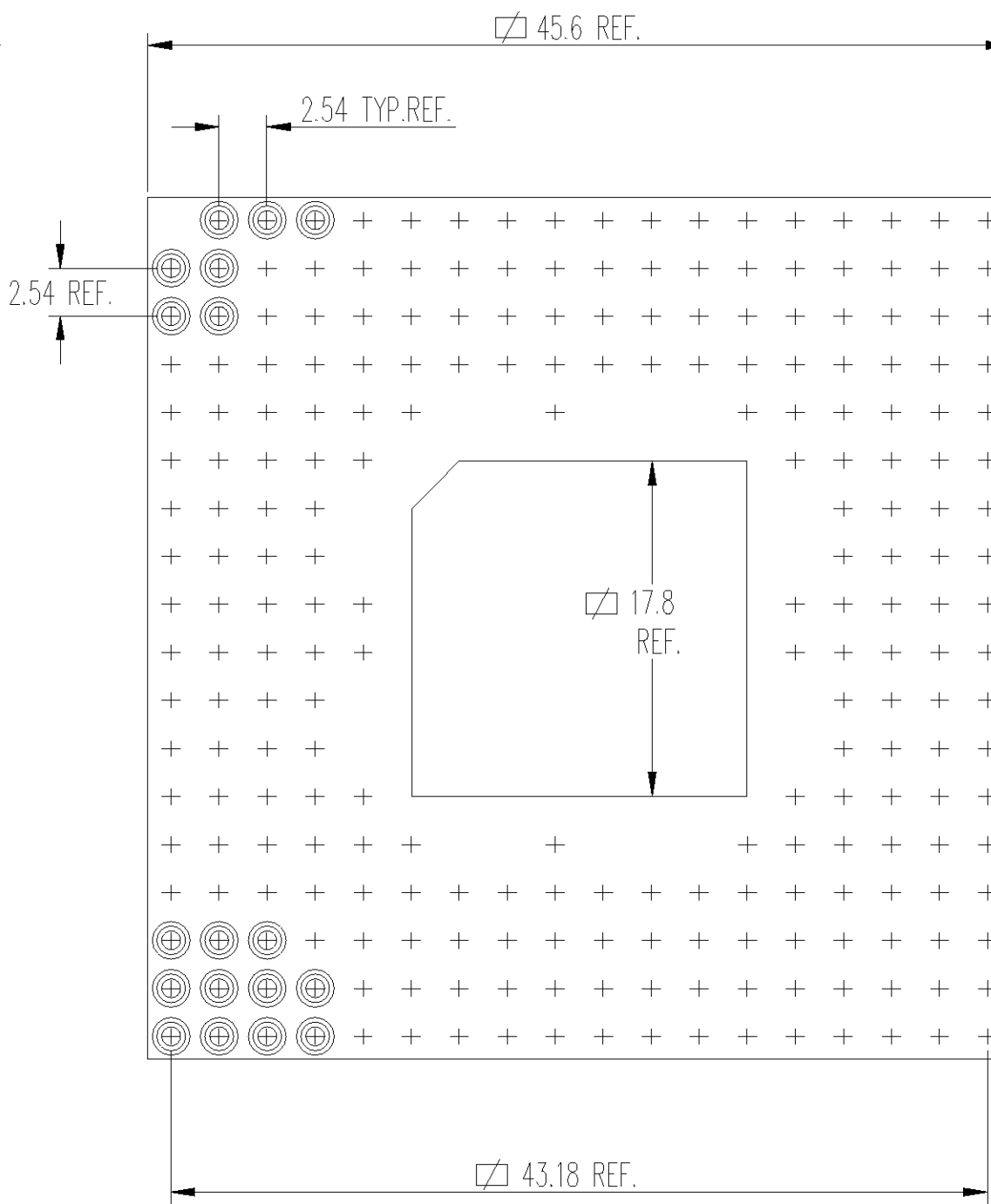
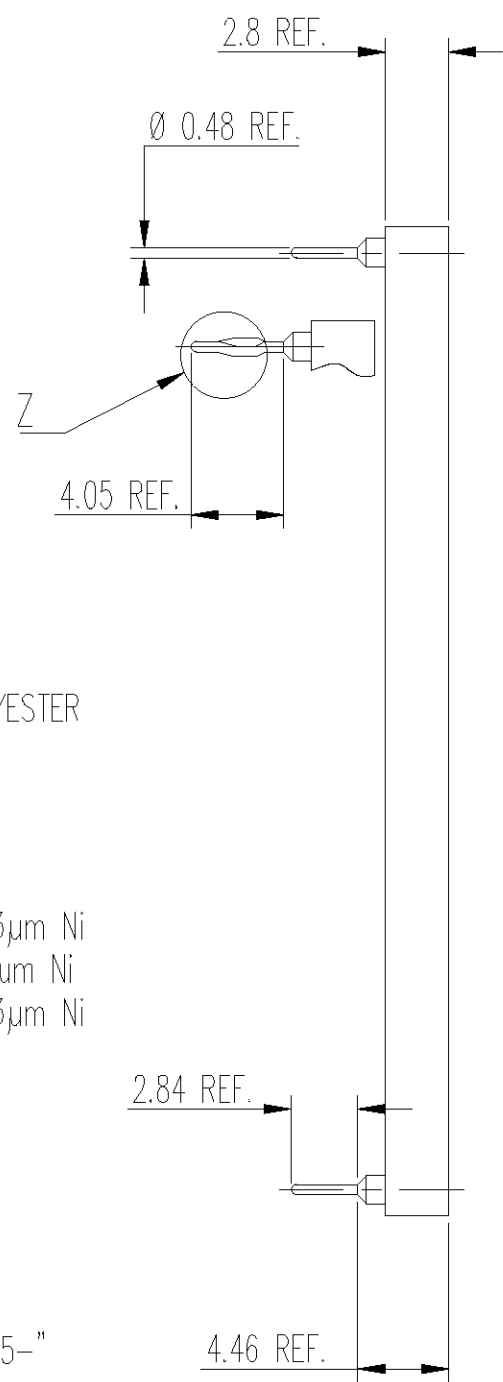


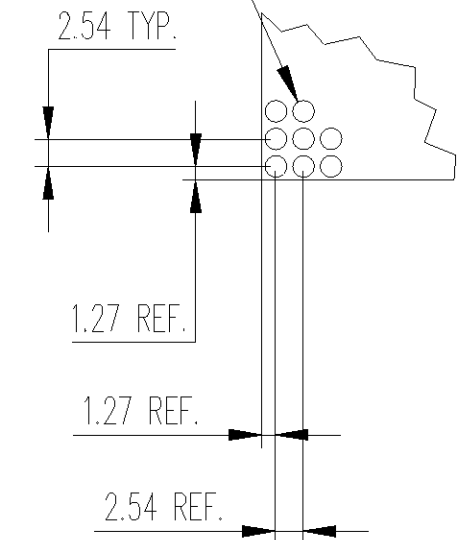
DRAWING NO  
C - 210715



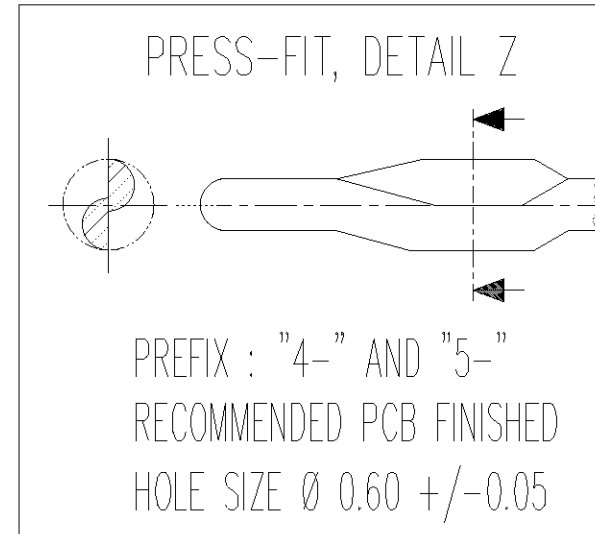
241 positions



Ø 0.8 TYP.  
⊕ Ø 0.10 (M)



RECOMMENDED P.C.  
BOARD PATTERN

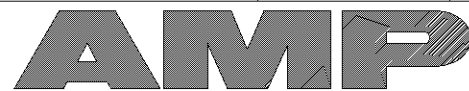


NOTE :

- MATERIAL
  - INSULATOR : GLASSFILLED THERMOPLASTIC POLYESTER
  - SOLDER TAIL SLEEVE : BRASS
  - PRESS-FIT SLEEVE : PHOSPHOR BRONZE
  - CLIP : STAMPED BERYLLIUM COPPER
- SLEEVE PLATING:
  - PREFIX "0-" AND "2-": 5µm Sn/Pb OVER 2-3µm Ni
  - PREFIX "1-" AND "3-": 0.25µm Au OVER 2-3µm Ni
  - PREFIX "4-" AND "5-": 3µm Sn/Pb OVER 2-3µm Ni
- INNER CONTACT PLATING
  - SUFFIX "-1" 0.25µm 18c. Au
  - SUFFIX "-3" 0.75µm 18c. Au
  - SUFFIX "-4" 0.75µm 24c. Au
  - SUFFIX "-5" 5µm MIN. Sn/Pb \*\*
  - SUFFIX "-6" 0.1µm FLASH 24c. Au
  - SUFFIX "-7" 0.60µm 18c. Au
  - \*\* ONLY WITH PREFIX "0-", "2-", "4-" AND "5-"
- INNER SPRING CONTACT ACCEPT Ø 0.40 TO 0.56  
OR RECTANGULAR PIN 0.25 x 0.45
- INSERTION CHARACTERISTICS:
  - PREFIX "0-", "1-" AND "4-": VERY LOW FORCE
  - PREFIX "2-", "3-" AND "5-": ULTRA LOW FORCE
- MECHANICAL DATA WITH A Ø 0.43 TEST PIN :
 

	VLI	ULI
-MAX. INSERTION FORCE :	0.7N	0.2N
-MIN. EXTRACTION FORCE :	0.1N	0.05N
-MECHANICAL LIFE : 100 CYCLES MIN.		
WAS 700-241-18-0-CC AND CCAP		

DIMENSIONS	mm					
SURFACE TEXTURE	N7/ (✓)					
CONCENTRICITY	⊙ 0.15					
PRODUCT SPEC.		P	REV	ECN	DRWN	DATE



DSM DECOLLETAGE SA SAINT-MAURICE  
CH 1890 SAINT-MAURICE (VS)

DRAWN P.-A. MEIER 22 JUL 98  
CHECKED A. BOLIS 22 JUL 98  
APPROVED

CUSTOMER DRAWING  
FOR REFERENCE ONLY

LOC	SCALE	SIZE	DRAWING NO	SHEET	REVISION
EK	2/1	A4	C - 210715	1 OF 1	○

THIS INFORMATION IS CONFIDENTIAL AND IS DISCLOSED TO YOU ON CONDITION THAT NO FURTHER DISCLOSURE IS MADE BY YOU TO OTHER THAN AMP PERSONNEL WITHOUT WRITTEN AUTHORIZATION FROM DSM SWITZERLAND.

NAME  
OPEN FRAME PGA  
18 x 18, 241 SOCKETS