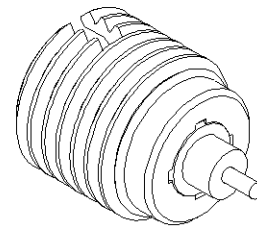
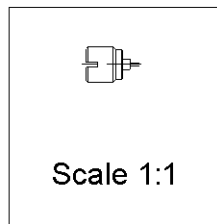
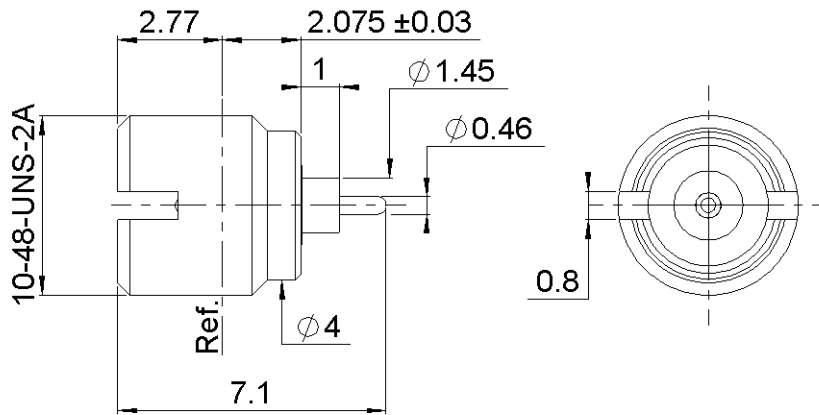
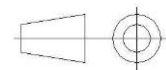


PAGE 1/3	ISSUE 23-01-17B	SERIES SMP	PART NUMBER R222561701
----------	-----------------	------------	------------------------



All dimensions are in mm.



COMPONENTS	MATERIALS	PLATING (µm)
Body	STAINLESS STEEL	PASSIVATED
Center contact	BERYLLIUM COPPER	GOLD OVER NICKEL
Outer contact	-	-
Insulator	PTFE	-
Gasket	-	-
Others parts	-	-
-	-	-
-	-	-

PAGE 2/3	ISSUE 23-01-17B	SERIES SMP	PART NUMBER R222561701
----------	------------------------	-------------------	-------------------------------

PACKAGING

Standard	Unit	Other
100	Contact us	Contact us

ELECTRICAL CHARACTERISTICS

Impedance		50		Ω
Frequency		0-40		GHz
VSWR	1.3* +		0,0000	x F(GHz) Maxi
Insertion loss		0.12		√F(GHz) dB Maxi
RF leakage	- (NA		- F(GHz)) dB Maxi
Voltage rating		335		Veff Maxi
Dielectric withstanding voltage		500		Veff mini
Insulation resistance		5000		MΩ mini

ENVIRONMENTAL

Operating temperature	-65/+165	°C
Hermetic seal	NA	Atm.cm3/s
Panel leakage	NA	

MECHANICAL CHARACTERISTICS

Center contact retention				
Axial force – Mating End		3		N mini
Axial force – Opposite end		6.68		N mini
Torque		NA		N.cm mini
Recommended torque				
Mating		NA		N.cm
Panel nut		90		N.cm
Mating life		1000		Cycles mini
Weight		0,3000		g

SPECIFICATION

OTHER CHARACTERISTICS

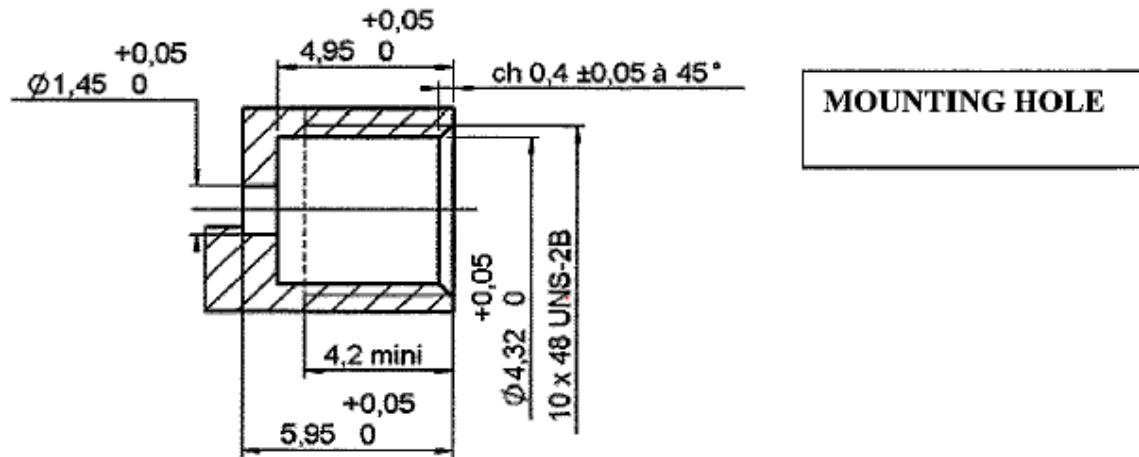
Assembly instruction:

Others:

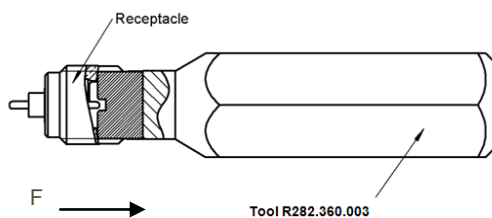
***Coaxial transmission line**

PAGE 3/3	ISSUE 23-01-17B	SERIES SMP	PART NUMBER R222561701
----------	-----------------	------------	------------------------

ADDITIONAL INFORMATIONS
MOUNTING AND REPLEACEMENT INSTRUCTIONS



1. Connector must be screwed or unscrewed with adapted torque driver R282.339.001 (recommended coupling torque : 90 Ncm) screw driver : R282.360.003
2. Slide on the connector in F direction until it stops against the tool.



3. Screw the whole into the housing until activation of the torque driver.
4. Withdraw the tool and solder the center contact.

