

8 7 6 5 4 3 2 1

ENG. NO.

EDP NO.

SIMILAR ITEM

PROJECT NO.

F

E

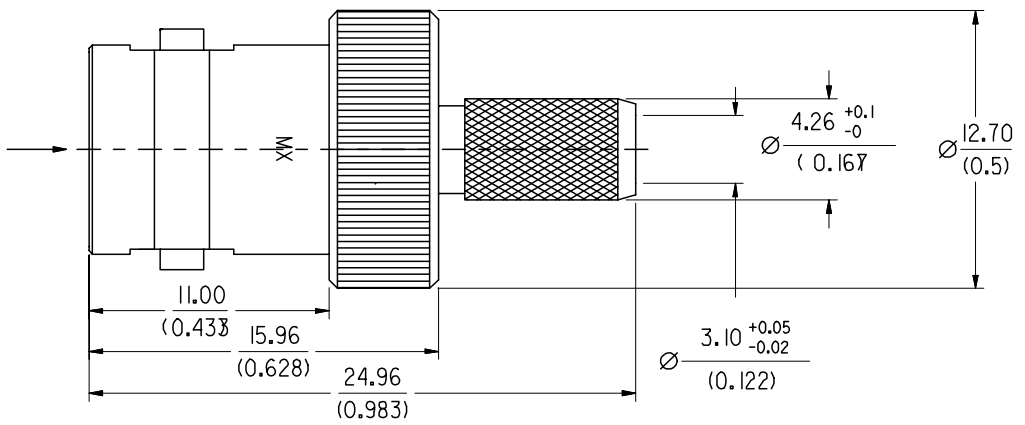
D

C

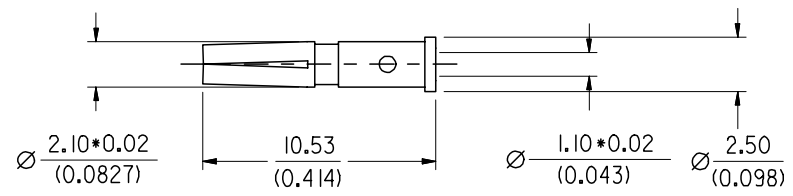
B

A

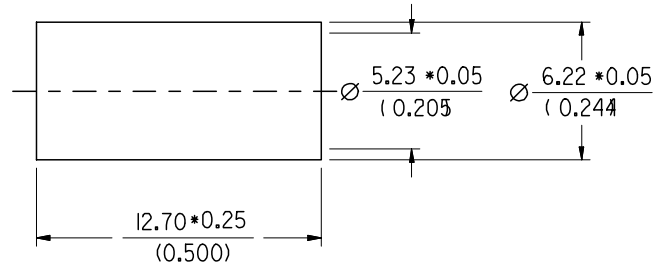
CONNECTOR INTERFACE  
PER MOLEX STANDARD  
ES-73599-0000



BODY ASSEMBLY



CENTER CONTACT (CAPTIVE)



FERRULE

CABLE ATTACHMENT:  
INNER CONTACT -----CRIMP (1.69 HEX.)  
OR SOLDER  
OUTER CONDUCTOR-----CRIMP (5.41 HEX.)  
ASSEMBLY INSTRUCTION--AS-73597-0031

FINISH :  
CONNECTOR BODY-----NICKEL PLATING  
CENTER CONTACT-----GOLD PLATING  
FERRULE -----NICKEL PLATING

MECHANICAL & ELECTRICAL CHARACTERISTICS:  
PER PRODUCT SPECIFICATION PS-73598-0000

CONSTRUCTION:  
CONNECTOR BODY-----BRASS  
DIELECTRIC-----TEFLON  
CENTER CONTACT-----PHOSPHOR BRONZE  
FERRULE -----BRASS

MATERIAL & FINISHES:  
PER PRODUCT SPECIFICATION PS-73598-0000

PACKAGING:  
INDIVIDUAL PLASTIC BAGS

				MATERIAL : SEE NOTE		 MOLEX TAIWAN LTD. ( R.F. DIVISION )
				FINISH : SEE NOTE		
				SCALE : 4:1	UNIT : mm (INCH)	GENERAL TOLERANCES ANGLE : ± 3° DIM : ± .25x.010
				DRAWN BY :		DRW. NO.: SDA-73174-0193 REV A
				CHK'D BY :		TITLE : 50 OHMS BNC STRAIGHT JACK RG58C/U RG141A/U, RG303/U CRIMP/CRIMP
LTR	REVISION RECORD	ECN	DR/CHK	DATE	APPR'D BY :	
STANDARD ITEM			<input checked="" type="checkbox"/> YES	<input checked="" type="checkbox"/> NO	SHEET	OF

DO NOT SCALE DRAWING