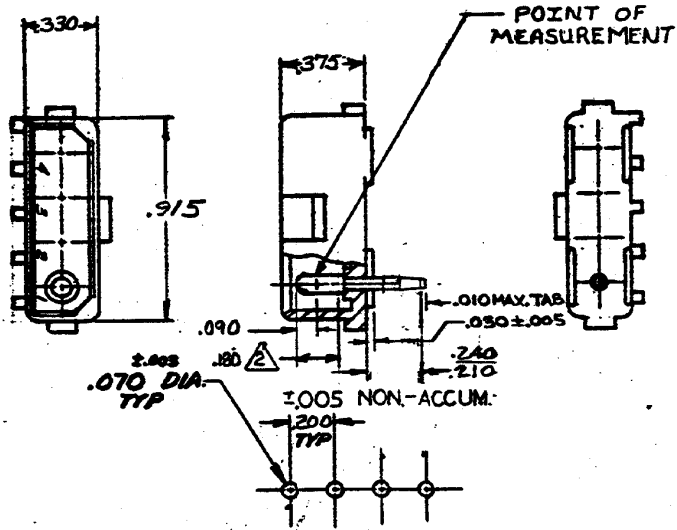


5

WAS P-73-6103

PRINTED IN INCHES. DO NOT SCALE PRINT.



RECOMMENDED LAYOUT FOR .125 THICK P.C. BOARD

- PARTS COMPLY WITH TE SOLDERABILITY SPEC NO 109-11-3
- CONTACT IS PLATED OVERALL WITH .000050 NICKEL, THEN .000030 GOLD OVER CONTACT LENGTH INDICATED AND TIN PLATED ON SOLDER TAIL END.
- DIMENSION SHOWN REPRESENT PRODUCT IN DRY CONDITION. ADDITIONAL 2% GROWTH DUE TO END USE LOCATION MOISTURE ABSORPTION MAY OCCUR AND SHOULD BE ACCOUNTED FOR.

|              |                     |                   |                      |
|--------------|---------------------|-------------------|----------------------|
| OBSOLETE     | <del>350544-2</del> | NYLON - NATURAL   | COPPER ALLOY - GOLD  |
|              | 350544-1            | NYLON - NATURAL   | COPPER ALLOY PRE-TIN |
| ASSEMBLY NO. |                     | HSG. MATL & COLOR | PIN MATL & FINISH    |

|    |                           |    |     |          |
|----|---------------------------|----|-----|----------|
| L3 | REVISED PER ECR-21-117185 | PJ | VS  | 20067201 |
| L2 | REVISED PER ECR-15-006702 | NK | PQ  | 20012015 |
| L1 | REVISION RECORD           | CR | CMC | DATE     |

|  |  |                                  |                 |         |
|--|--|----------------------------------|-----------------|---------|
| OR<br>9. Eckman                                | DATE<br>5-30-73                          | MATERIAL AND FINISH<br>SEE TABLE | TE Connectivity |         |
| CHK<br>BY P.C. BOARD                           | DATE<br>4/16/73                          | WIRE - RANGE - INSULATION<br>11  | CLASS           |         |
| DE<br>J. Humble 9/14/73                        | TOLERANCE EXCEPT AS NOTED<br>±.015 ±.100 | SCALE<br>1:1                     | LOC<br>CM       | NO<br>B |
| APP<br>J. Humble 9/14/73                       | REV<br>350544 L3                         |                                  |                 |         |
| NAME<br>4 CIRCUIT MATE-N-LOK P.C. BOARD HEADER |  |                                  |                 |         |