

4

3

2

1

THIS DRAWING IS UNPUBLISHED. RELEASED FOR PUBLICATION
© COPYRIGHT ALL RIGHTS RESERVED.

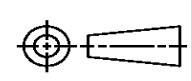
LOC	DIST	REVISIONS			
P	LTR	DESCRIPTION	DATE	DWN	APVD
	L1	ECR-15-008773	10JUN2015	GK	HMR

REPLACED BY OCEAN STYLE APPLICATOR PART NUMBER 2266763-1

FOR REPLACEMENT PARTS FOR APPLICATOR 466062 REFER TO ADDITIONAL PAGE(S). SPARE PARTS KIT (IF LISTED) WILL REMAIN AVAILABLE.

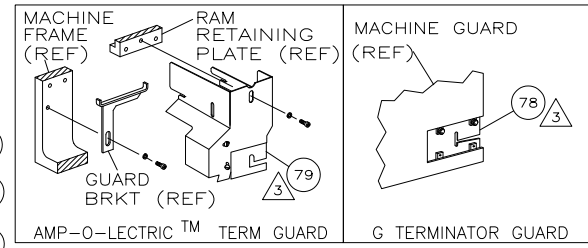
THE REPLACEMENT OCEAN STYLE APPLICATOR HAS THE SAME TERMINATOR/PRESS INTERFACE AS APPLICATOR 466062

THIS DRAWING IS A CONTROLLED DOCUMENT.		DWN	GOPALAKRISHNA HV														
DIMENSIONS:		CHK	RAGHAVENDRA														
TOLERANCES UNLESS OTHERWISE SPECIFIED:		APVD	RAGHAVENDRA														
<table border="0"> <tr><td>0 PLC</td><td>±</td></tr> <tr><td>1 PLC</td><td>±</td></tr> <tr><td>2 PLC</td><td>±</td></tr> <tr><td>3 PLC</td><td>±</td></tr> <tr><td>4 PLC</td><td>±</td></tr> <tr><td>ANGLES</td><td>±</td></tr> </table>		0 PLC	±	1 PLC	±	2 PLC	±	3 PLC	±	4 PLC	±	ANGLES	±	PRODUCT SPEC	NAME		
0 PLC	±																
1 PLC	±																
2 PLC	±																
3 PLC	±																
4 PLC	±																
ANGLES	±																
MATERIAL		APPLICATION SPEC	SIDE FEED HDM APPLICATOR														
FINISH		WEIGHT	SIZE	CAGE CODE	DRAWING NO												
			A3		©- 466062												
		CUSTOMER DRAWING	SCALE	SHEET 1 OF 2	REV L1												



THIS DRAWING IS UNPUBLISHED. RELEASED FOR PUBLICATION
 © COPYRIGHT BY TYCO ELECTRONICS CORPORATION. ALL RIGHTS RESERVED.

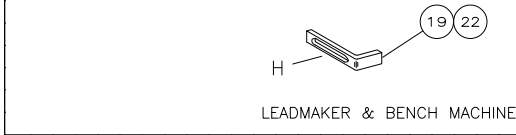
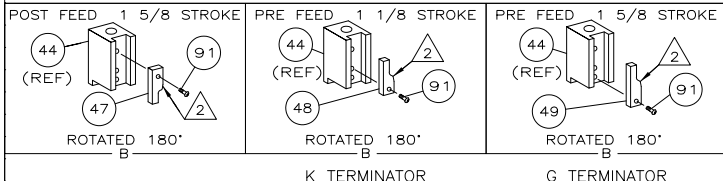
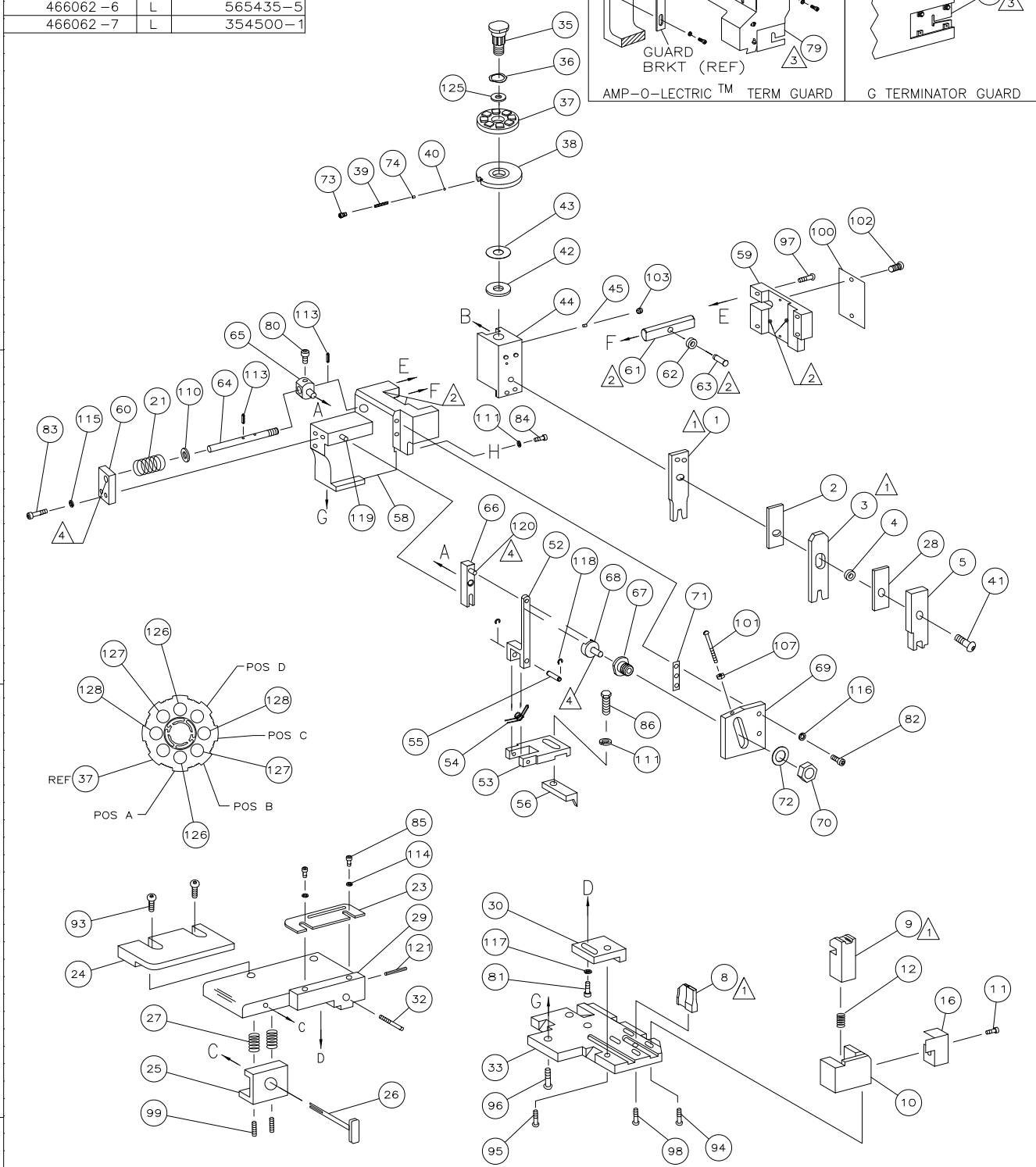
PART NUMBER	REV	FIRST USED
466062-1	L	122500-1
466062-6	L	565435-5
466062-7	L	354500-1



TERMINAL NAME: AMP-IN		AMP TERMINAL AMP CRIMP SPECS		
PAD LTR	CRIMP HEIGHT	WIRE SIZE		
A	.038 ±.002 [0.97 ±0.05mm]	22		
B	.034 ±.002 [0.86 ±0.05mm]	24		
C	.032 ±.002 [0.81 ±0.05mm]	26		
D	NOT	USED		
CRIMP	SIZE	TYPE	RANGE	
WIRE	.042 [1.07mm]	F	26-22	
INSUL	.110 [2.79mm]	F	.100 MAX	
WIRE STRIP LENGTH	TERM APPL SPEC	FEED	APPL INSTRUCTION	SET UP GAGE LAYOUT
.165-.195	114-1016	.330	408-8040	458637-1

LOC	DIST	REVISIONS			
P	LTR	DESCRIPTION	DATE	BY	APPD
A	66	ECR-07-023678	10-2007	MY	GB

-1	LEADMAKER	MECH POST FEED
-6	BENCH MODEL K	MECH PRE FEED
-7	BENCH MODEL G	MECH PRE FEED



- 1 RECOMMENDED SPARE PARTS.
- 2 GREASE LIGHTLY.
- 3 GUARD MUST BE IN PLACE WHEN OPERATING APPLICATOR IN A BENCH MACHINE.
- 4 LUBRICATE DAILY USING NO. 20 MACHINE OIL.
- 5. ITEMS WITH QTY OF REF SPECIFIED (EXCEPT ITEMS 78 AND 79) ARE USED ON ITEM 46.

129	1	1	1	4-21028-0	PIN,SLT SPR(Ø.093x.75)ST GDE PL
128	2	2	2	5-354779-8	PIN, WIRE DISC (.3280)C
127	2	2	2	5-354779-4	PIN, WIRE DISC (.3260)B
126	2	2	2	4-354779-6	PIN, WIRE DISC (.3220)A
125	1	1	1	986950-1	WASHER, FLAT PRECISION
124	1	1	1	217238-1	GENERAL INSTRUCTION PACKAGE
123	1	1	1	4088040	SF APPL INST 408-8040
122					
121	1	1	1	4-21028-0	PIN,SLT SPR(Ø.093x.75)ST GDE PL
120	REF	REF	REF	1-21030-1	PIN,DOWEL(Ø.187x.50)LEVER
119	REF	REF	REF	1-21030-6	PIN,DOWEL(Ø.187x1.25)HOUSING
118	REF	REF	REF	21045-3	RING,RET "C"(Ø.187)FD FING PIN
117	1	1	1	21024-5	WASHER, LOCK(#10)ADJ BLOCK
116	REF	REF	REF	21024-5	WASHER,LOCK(#10)ADJ PLATE
115	REF	REF	REF	21024-5	WASHER,LOCK(#10)FEED GDE ROD
114	2	2	2	21024-2	WASHER,LOCK(#4)FRONT STP GUIDE
113	REF	REF	REF	5-21028-1	PIN,SLT SPR(Ø.125x.50)ADJ ROD
112					
111	2	2	2	21024-4	WASHER,LOCK(#8)STRIPPER
110	REF	REF	REF	21899-4	WASHER,FLAT(Ø5/16)SCREW ADJ
109					
108					
107	REF	REF	REF	21068-5	NUT,HEX(6-32)FEED ADJ
106					
105					
104					
103	1	1	1	21009-2	SCR,SKT SET(1/4-20x.25 LW)RAM
102	2	2	2	21017-2	SCR,DRIVE(#2x.19)ID PLATE
101	REF	REF	REF	6-23715-5	SCR,PAN HD(6-32x1.50)FEED ADJ
100	1	1	1	461264-1	PLATE, IDENTIFICATION
99	2	2	2	5-21006-6	SCR,SET(10-32x.75)DRAG
98	1	1	1	22733-8	SCR,BHC(8-32x.38 LW)ANVIL
97	REF	REF	REF	2-21002-9	SCR,BHC(10-32x.75)CAP
96	REF	REF	REF	2-22733-8	SCR,BHC(1/4-20x.62)HOUSING
95	REF	REF	REF	2-21002-7	SCR,BHC(10-32x.50)SG ADJ BLOCK
94	2	2	2	2-21002-2	SCR,BHC(8-32x.50)TERM H DWN
93	2	2	2	2-21002-1	SCR,BHC(8-32x.38)R STP GDE
92					
91	1	1	1	1-21002-7	SCR,BHC(6-32x.38)CAM
90					
89					
88					
87					
86	1	1	1	2-22603-0	SCR,HEX HD(8-32x.31)FEED FINGER
85	2	2	2	1-21000-3	SCR,SHC(4-40x.25)FR ST GUIDE
84	1	1	1	2-21000-7	SCR,SHC(8-32x.50)STRIPPER
83	REF	REF	REF	3-21000-7	SCR,SHC(10-32x.75)FEED ROD GD
82	REF	REF	REF	3-21000-6	SCR,SHC(10-32x.62)FD ADJ BLK
81	1	1	1	3-21000-4	SCR,SHC(10-32x.38)SG ADJ BL
80	REF	REF	REF	3-21000-4	SCR,SHC(10-32x.38)PIVOT BLK
79	-	REF	-	455749-1	GUARD, WINDOW
78	REF	-	-	679532-1	INSERT, GUARD
77					
76					
75					
74	1	1	1	690603-1	SPRING, ASSIST
73	1	1	1	23030-1	SCR,SHC(6-32x.25 SL)INS DISC
72	REF	REF	REF	458109-1	WASHER, SPECIAL
71	REF	REF	REF	690517-1	SPACER
70					
69					
68					
67					
66					
65					
64					
63					
62					
61					
60					
59					
58					
57					
56	1	1	1	458537-2	PAWL, FEED
55	REF	REF	REF	240624-1	PIN, FEED FINGER
54	REF	REF	REF	691499-1	SPRING, FEED FINGER
53	REF	REF	REF	690541-1	HOLDER, FEED FINGER
52	REF	REF	REF	455679-1	LEVER, TERMINAL FEED ARM
51					
50					
49	1	-	-	690602-6	CAM, PRE-FEED 1 5/8 ST
48	-	1	-	690602-5	CAM, PRE-FEED 1 1/8 ST
47	-	-	1	690501-4	CAM, POST-FEED 1 5/8 ST
46	1	1	1	459456-1	APPLICATOR, BASIC (SUBASSY)
45	1	1	1	690191-1	PLUG, NYLON
44	1	1	1	455673-3	RAM
43	1	1	1	690125-1	WASHER, LAMINATED
42	1	1	1	690124-1	WASHER, RAM
41	1	1	1	7-21002-9	BOLT, CRIMPER(5/16x1.00)
40	1	1	1	23241-6	BALL, STEEL
39	1	1	1	690170-1	SPRING, COMPRESSION
38	1	1	1	690142-5	DISC, INSULATION
37	1	1	1	354777-1	DISC, WIRE
36	1	1	1	22480-5	WASHER, SPRING
35	1	1	1	690212-1	POST, RAM
34					
33	REF	REF	REF	455675-1	PLATE, BASE
32	1	1	1	690432-3	SCREW, ADJUSTMENT
31					
30	REF	REF	REF	455689-1	BLOCK, STRIP GUIDE ADJ
29	1	1	1	1-455671-4	PLATE, STRIP GUIDE
28	1	1	1	1-455888-0	SPACER, FRONT SHEAR DEP
27	2	2	2	1-22284-0	SPRING, DRAG
26	1	1	1	690546-1	LEVER, DRAG RELEASE
25	1	1	1	240792-1	DRAG, TERMINAL
24	1	1	1	462471-1	GUIDE, STRIP (REAR)
23	1	1	1	690438-1	GUIDE, STRIP (FRONT)
22	-	-	1	690472-1	STRIPPER
21	REF	REF	REF	4-22284-9	SPRING, FEED RETURN
20					
19	1	1	-	691353-1	STRIPPER
18					
17					
16	1	1	1	318563-1	GUARD, CHIP, FRONT
15					
14					
13					
12	1	1	1	3-22280-3	SPRING, SHEAR
11	1	1	1	690461-1	STOP, SHEAR
10	1	1	1	690459-1	HOLDER, SHEAR (FRONT)
9	1	1	1	462006-1	SHEAR, FLOAT (FRONT)
8	1	1	1	2-458834-0	ANVIL
7					
6					
5	1	1	1	2-455889-0	DEPRESSOR, SHEAR (FRONT)
4	1	1	1	238011-7	SPACER, BLOCK CRIMPER
3	1	1	1	2-456134-2	CRIMPER, INSULATION
2	1	1	1	455888-1	SPACER, CRIMPER
1	1	1	1	458141-3	CRIMPER, WIRE

REF	REF	REF	REF	REF	DESCRIPTION	ITEM NO	
REF	REF	REF	REF	REF	22594-8	NUT,HEX(1/2-20)	70
REF	REF	REF	REF	REF	240628-1	PLATE, ADJUSTMENT	69
REF	REF	REF	REF	REF	240626-1	SHAFT, PIVOT	68
REF	REF	REF	REF	REF	240633-1	BUSHING	67
REF	REF	REF	REF	REF	455680-1	LEVER, INTERMEDIATE	66
REF	REF	REF	REF	REF	240629-1	BLOCK, PIVOT	65
REF	REF	REF	REF	REF	240632-2	SCREW, ADJ FEED ROD	64
REF	REF	REF	REF	REF	240659-3	PIN, CAM ROLLER	63
REF	REF	REF	REF	REF	240658-1	ROLLER, CAM	62
REF	REF	REF	REF	REF	454398-2	ROD, FEED	61
REF	REF	REF	REF	REF	454178-1	GUIDE, FEED ROD	60
REF	REF	REF	REF	REF	454220-1	CAP, RAM	59
REF	REF	REF	REF	REF	454485-1	HOUSING	58
REF	REF	REF	REF	REF			57
REF	REF	REF	REF	REF			56
REF	REF	REF	REF	REF			55
REF	REF	REF	REF	REF			54
REF	REF	REF	REF	REF			53
REF	REF	REF	REF	REF			52
REF	REF	REF	REF	REF			51
REF	REF	REF	REF	REF			50
REF	REF	REF	REF	REF			49
REF	REF	REF	REF	REF			48
REF	REF	REF	REF	REF			47
REF	REF	REF	REF	REF			46
REF	REF	REF	REF	REF			45
REF	REF	REF	REF	REF			44
REF	REF	REF	REF	REF			43
REF	REF	REF	REF	REF			42
REF	REF	REF	REF	REF			41
REF	REF	REF	REF	REF			40
REF	REF	REF	REF	REF			39
REF	REF	REF	REF	REF			38
REF	REF	REF	REF	REF			37
REF	REF	REF	REF	REF			36
REF	REF	REF	REF	REF			35
REF	REF	REF	REF	REF			34
REF	REF	REF	REF	REF			33
REF	REF	REF	REF	REF			32
REF	REF	REF	REF	REF			31
REF	REF	REF	REF	REF			30
REF	REF	REF	REF	REF			29
REF	REF	REF	REF	REF			28
REF	REF	REF	REF	REF			27
REF	REF	REF	REF	REF			26
REF	REF	REF	REF	REF			25
REF	REF	REF	REF	REF			24
REF	REF	REF	REF	REF			23
REF	REF	REF	REF	REF			22
REF	REF	REF	REF	REF			21
REF	REF	REF	REF	REF			20
REF	REF	REF	REF	REF			19
REF	REF	REF	REF	REF			18
REF	REF	REF	REF	REF			17
REF	REF	REF	REF	REF			16
REF	REF	REF	REF	REF			15
REF	REF	REF	REF	REF			14
REF	REF	REF	REF	REF			13
REF	REF	REF	REF	REF			12
REF	REF	REF	REF	REF			11
REF	REF	REF	REF	REF			10
REF	REF	REF	REF	REF			9
REF	REF	REF	REF	REF			8
REF	REF	REF	REF	REF			7
REF	REF	REF	REF	REF			6
REF	REF	REF	REF	REF			5
REF	REF	REF	REF	REF			4
REF	REF	REF	REF	REF			3
REF	REF	REF	REF	REF			2
REF	REF	REF	REF	REF			1