

4

3

2

1

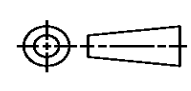

THIS DRAWING IS UNPUBLISHED. RELEASED FOR PUBLICATION
 © COPYRIGHT ALL RIGHTS RESERVED.

LOC	DIST	REVISIONS			
P	LTR	DESCRIPTION	DATE	DWN	APVD
	C2	ECR-16-009820	18JUL2016	GK	SD

REPLACED BY OCEAN STYLE APPLICATOR PART NUMBER 2151651-1

FOR REPLACEMENT PARTS FOR APPLICATOR 1530177
 REFER TO ADDITIONAL PAGE(S). SPARE PARTS KIT (IF LISTED)
 WILL REMAIN AVAILABLE.

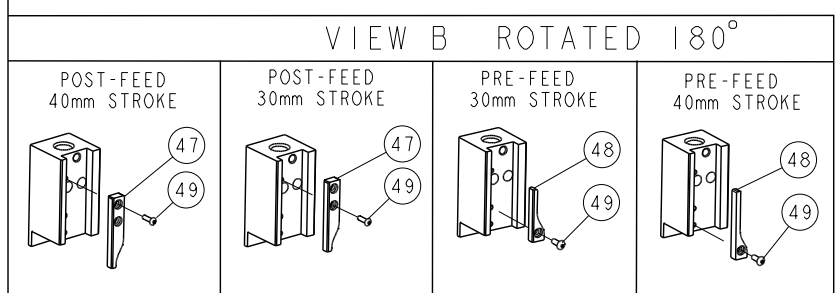
THE REPLACEMENT OCEAN STYLE APPLICATOR HAS THE
 SAME TERMINATOR/PRESS INTERFACE AS APPLICATOR
 1530177

THIS DRAWING IS A CONTROLLED DOCUMENT.		DWN	GOPALAKRISHNA HV		
DIMENSIONS:		CHK	GOPALAKRISHNA HV		
		TOLERANCES UNLESS OTHERWISE SPECIFIED:		 TE Connectivity	
		0 PLC ± 1 PLC ± 2 PLC ± 3 PLC ± 4 PLC ± ANGLES ±		NAME	
MATERIAL		APVD		FINE ADJUST SIDE FEED HDI APPLICATOR	
FINISH		PRODUCT SPEC		DRAWING NO	
		APPLICATION SPEC		CAGE CODE	
		WEIGHT		DRAWING NO	
		CUSTOMER ACCESSIBLE PRODUCTION DRAWING		RESTRICTED TO	
		SCALE		DRAWING NO	
		SHEET 1 OF 2		CAGE CODE	
		REV C2		DRAWING NO	

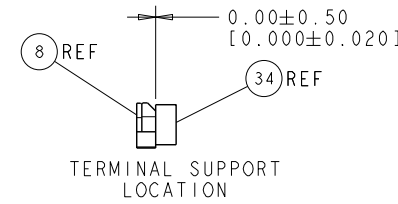
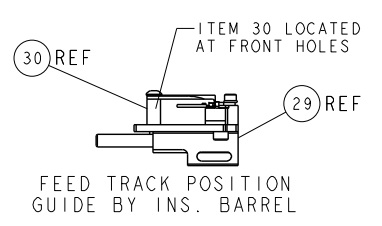
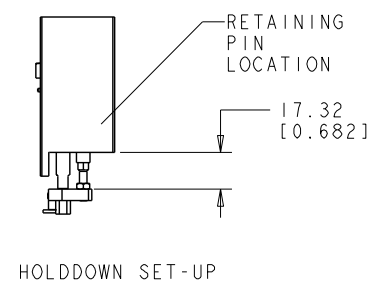
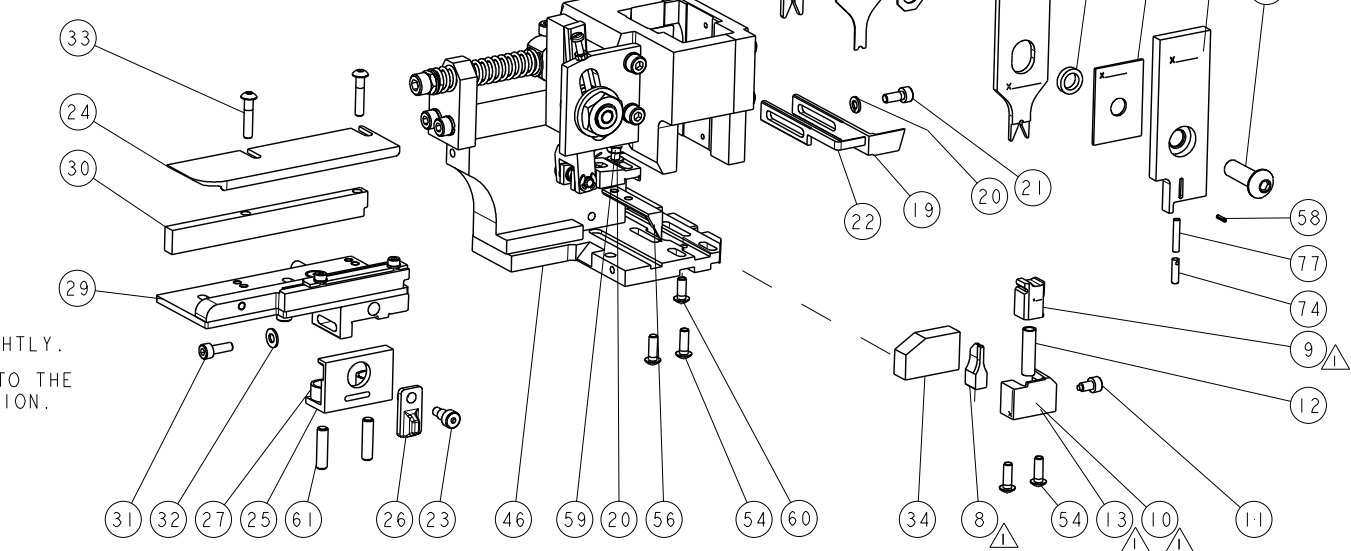
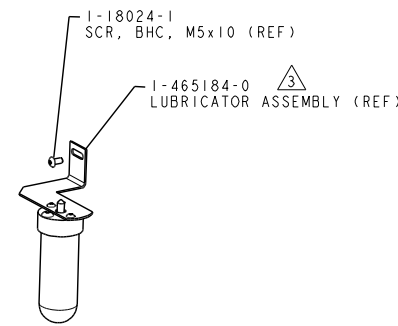
PART NUMBER	REV	TERMINATOR	FEED TYPE	DESCRIPTION
1530177-1	C	LEADMAKER	MECH POST FEED	CUTS CARRIER
1530177-2	C	BENCH	MECH PRE FEED	CUTS CARRIER
1530177-6	C	LEADMAKER	MECH POST FEED	CONTINUOUS CARRIER
7-1530177-1	C	LEADMAKER	MECH POST FEED	-1 AND SPARE PARTS
7-1530177-2	C	BENCH	MECH PRE FEED	-2 AND SPARE PARTS
7-1530177-6	C	LEADMAKER	MECH POST FEED	-6 AND SPARE PARTS
7-1530177-7	B	-	-	SPARE PARTS KIT

CRIMP DATA		TEC TERMINAL		TEC CRIMP SPECS	
TERMINAL NAME: CONTACT, RECEPTACLE / TAB, CRIMP SNAP-IN					
CRIMP	SIZE	TYPE	RANGE		
WIRE	1.40 [0.055 IN]	F	20-18 AWG		
INSUL	1.98 [0.078 IN]	O	Ø1.7-2.1 [0.067-0.083 IN]		
WIRE STRIP LENGTH 2.20-2.70 [0.087-0.106 IN]		APPL INSTRUCTIONS 408-8322 & 408-8490			
TERMINAL APPL SPEC 114-13261		FEED		9.00 [0.354 IN]	
TERMINALS APPLIED					
RECEPTACLE	TAB	TAB			
2106123-1	2106124-1	2106124-5			
2106123-3	2106124-2	2106124-6			
-	2106124-3	2106124-7			
WIRE SIZE	CRIMP HEIGHT	REF SETTING			
18 AWG	1.05 ±0.05 [0.041 ±0.002 IN]	A6			
20 AWG	0.87 ±0.05 [0.034 ±0.002 IN]	C0			

- △ RECOMMENDED SPARE PARTS.
- 2. GREASE RAM, CAM, CAM FOLLOWER AND FEED ROD LIGHTLY.
- △ CERTAIN TERMINALS REQUIRE LUBRICATION. REFER TO THE APPLICATOR INSTRUCTION SHEET FOR MORE INFORMATION.
- 4. LUBRICATE DAILY PER THE APPLICATOR INSTRUCTION SHEET SUPPLIED WITH THE APPLICATOR.



*** WARNING**
ON INSTALLATION, SET WIRE DISC TO LARGEST WIRE SIZE SETTING. USE OF SETTINGS BELOW MIN. REQUIRED CRIMP HEIGHT SETTING WILL CAUSE DAMAGE TO CRIMP TOOLING.



SET UP GAGE
458637-3

REVISONS		DATE	OWN	APVD
B	ECR-10-017542	23AUG2010	RK	GB
C	ECR-12-011324	21JUN2012	MY	GB
CI	ECR-14-004979	04APR2014	KH	UG

QTY	LOC	DIST	ITEM NO	DESCRIPTION	ITEM NO			
- 2	2	2	2	2	2	1655785-9	SCR, BTN SKT HD CAP (M3 X 6)	230
- 1	1	1	1	1	1	1-1976053-5	LOCATER BLOCK, TERMINAL	179
- 1	1	1	1	1	1	993111-8	PIN, SLOTTED SPRING 3.0 X 12.0	177
- 2	2	2	2	2	2	3-22280-7	SPRING, COMPRESSION	176
- 1	1	1	1	1	1	1752353-1	GUIDE PIN, HOLDDOWN	175
- 1	1	1	1	1	1	1901680-1	GUIDE PIN, HOLDDOWN	174
- 1	1	1	1	1	1	22278-7	SPRING, COMPRESSION	77
- 1	1	1	1	1	1	854769-4	HOLDER, INS	74
- 1	1	1	1	1	1	1490525-3	DEPRESSOR, WIRE	73
- 1	1	1	1	1	1	1338705-3	DOCUMENTATION PACKAGE	71
- 3	3	3	3	3	3	1-23147-4	SPRING, COMPRESSION	70
- 1	1	1	1	1	1	1490524-1	DEPRESSOR, SPACER	69
- 1	1	1	1	1	1	461264-5	PLATE, IDENTIFICATION	67
- 2	2	2	2	2	2	21017-2	SCREW, DRIVE	66
- 1	1	1	1	1	1	1424350-1	HOLDER, PIN, WIRED	65
- 1	1	1	1	1	1	3-18031-0	SCR, SET, CUP POINT M6 X 6.0	63
- 2	2	2	2	2	2	2-18032-5	SCR, SET, FLT POINT M5 X 20.0	61
- 1	1	1	1	1	1	18024-7	SCR, BTN SKT HD CAP (M4 X 10.0)	60
- 1	1	1	1	1	1	5-18022-2	SCR, HEX HD CAP M4 X 8.0	59
- 1	1	1	1	1	1	21028-2	PIN, SLOTTED SPRING .062 X .250	58
- 1	1	1	1	1	1	1338685-1	PAWL, FEED	56
- 4	4	4	4	4	4	18024-8	SCR, BTN SKT HD CAP (M4 X 12.0)	54
- 1	1	1	1	1	1	1-18030-0	NUT, HEX, REG M3.5	52
- 1	1	1	1	1	1	1-1901681-0	HOLDDOWN, TERMINAL	51
- 1	1	1	1	1	1	1-1752354-0	STANDOFF, HOLD-DOWN	50
- 1	1	1	1	1	1	18024-3	SCR, BTN SKT HD CAP (M3 X 10.0)	49
- 1	1	1	1	1	1	1338675-1	CAM, UNIVERSAL PRE FEED	48
- 1	1	1	1	1	1	1338676-1	CAM, UNIVERSAL POST-FEED	47
- 1	1	1	1	1	1	1320999-3	APPLICATOR SUBASSEMBLY, HD1	46
- 1	1	1	1	1	1	690191-1	PLUG, NYLON	45
- 1	1	1	1	1	1	1633724-5	RAM, (SIDE FEED)	44
- 1	1	1	1	1	1	2-18024-6	SCR, BTN SKT HD CAP (M8 X 25.0)	41
- 1	1	1	1	1	1	690125-1	SHIM SUB-ASSY	39
- 1	1	1	1	1	1	469367-8	SHIM	38
- 1	1	1	1	1	1	879103-3	FINE ADJUST HEAD ASSEMBLY	37
- 1	1	1	1	1	1	1-1752356-8	SUPPORT, TERMINAL	34
- 2	2	2	2	2	2	1-18024-0	SCR, BTN SKT HD CAP (M4 X 20.0)	33
- 1	1	1	1	1	1	18027-2	WASHER, FLAT, REG M4	32
- 1	1	1	1	1	1	1-18023-2	SCR, SKT HD CAP M4 X 12.0	31
- 1	1	1	1	1	1	1320908-4	SPACER, STRIP GUIDE	30
- 1	1	1	1	1	1	1633073-1	STRIP GUIDE ASSEMBLY	29
- 1	1	1	1	1	1	1-455888-0	SPACER, CRIMPER	28
- 2	2	2	2	2	2	1-22284-0	SPRING, COMPRESSION	27
- 1	1	1	1	1	1	356835-1	LEVER, DRAG RELEASE	26
- 1	1	1	1	1	1	240792-3	DRAG, TERMINAL	25
- 1	1	1	1	1	1	1320928-1	STRIP GUIDE	24
- 1	1	1	1	1	1	980371-4	SCR, SKT HD SHLDR 5.0 DIA X 6.0	23
- 1	1	1	1	1	1	1-690472-4	STRIPPER	22
- 1	1	1	1	1	1	1-18023-1	SCR, SKT HD CAP M4 X 10.0	21
- 2	2	2	2	2	2	18025-2	WASHER, SPRG LOCK, REG M4	20
- 1	1	1	1	1	1	1-1338987-9	STRIPPER	19
- 1	1	1	1	1	1	1338684-2	SHEAR HOLDER, FRONT	13
- 1	1	1	1	1	1	3-22280-3	SPRING, COMPRESSION	12
- 1	1	1	1	1	1	356885-5	STOP, SHEAR	11
- 1	1	1	1	1	1	1-1320921-0	SHEAR HOLDER, FRONT, CUT	10
- 1	1	1	1	1	1	462006-6	FLOATING SHEAR, FRONT	9
1	2	2	2	1	1	3-1633128-4	ANVIL, COMBINATION .055	8
-	-	-	-	-	-	-	-	7
-	-	-	-	-	-	-	-	6
-	1	1	1	1	1	854772-6	DEPRESSOR, SHEAR	5
- 1	1	1	1	1	1	1-238011-8	BLOCK, CRIMPER SPACER	4
1	2	2	2	1	1	1-1633757-3	CRIMPER, INSULATION 0	3
-	-	-	-	-	-	-	-	2
1	2	2	2	1	1	2-1633730-1	CRIMPER, WIRE	1

THIS DRAWING IS A CONTROLLED DOCUMENT. DIMENSIONING AND TOLERANCING PER ASME Y14.5M-2009. DIMENSIONS: mm [IN]. TOLERANCES UNLESS OTHERWISE SPECIFIED: 0 PLC ±, 1 PLC ±, 2 PLC ±, 3 PLC ±, 4 PLC ±, ANGLES ±.

Customer Accessible Production Drawing. SCALE: 3:5. SHEET 1 OF 1. REV C1.

STE TE Connectivity. FINE ADJUST SIDE FEED HD1 APPLICATOR. SIZE: A100779. DRAWING NO: 1530177.