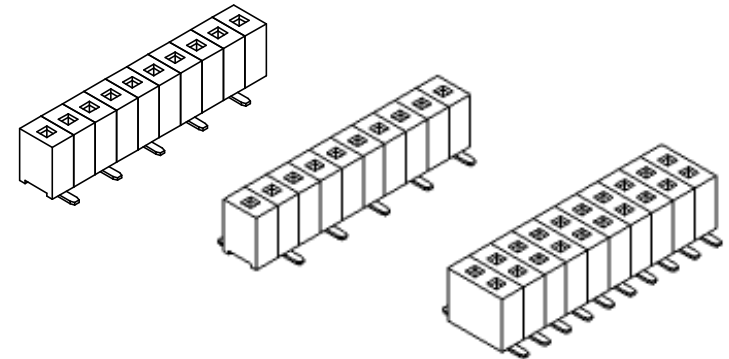
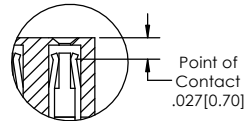
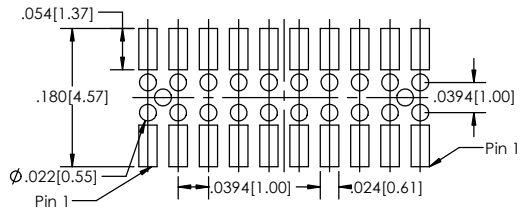
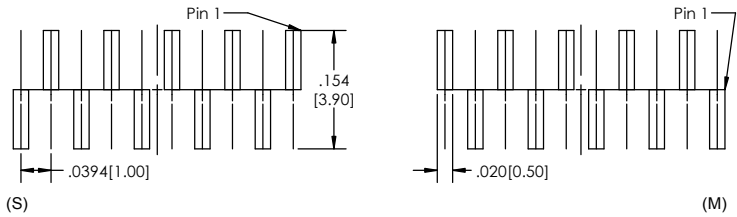


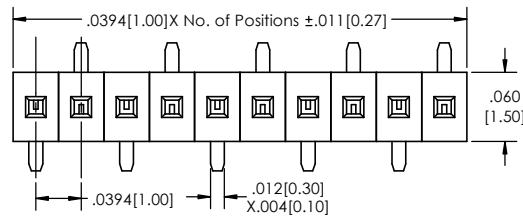
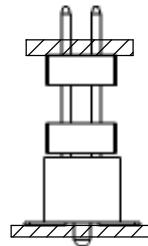
Recommended P.C. Board Layout

SCALE 8:1

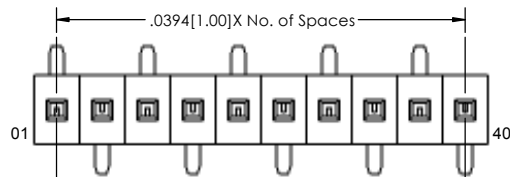
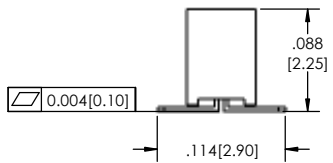


LSMSS-7 **XX** - **X** - **06** - **XX** - **XXX** - **X** - **XX** - **X** - **XX** - **LF**
(A) (B) (C) (D) (E) (F) (G) (H) (I) (J)

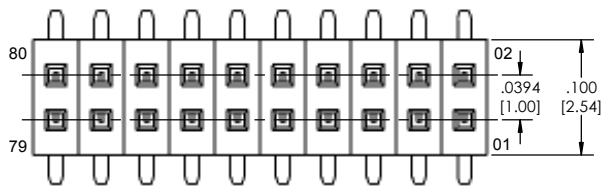
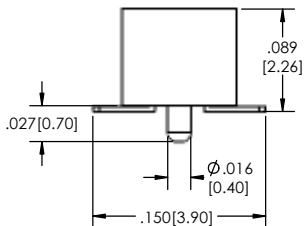
APPLICATION



SINGLE (S) ROW



SINGLE (M) ROW



DOUBLE ROW

- A. Pins Per Row
- 1 through 40
- B. Row Specification
- S= Single Row
- D= Double Row
- C. Style
- 06= Vertical Surface Mount
- D. Plating Options
- See Plating Options below
- E. Polarized Position
- Leave blank if not needed
- If required, specify empty pin position
- e.g. 012 for Pin 12
- F. Footprint
- S= Pin 1 right
- M= Pin 1 left
- G. Packing Information
- TR= Tape and Reel
- TB= Tube
- H. Pad
- P= Plastic
- K= Kapton
- O= No Pad
- If left blank, packaging at MLE's discretion
- Pad may be metal, mylar or plastic
- I. Alignment Pin (Option only available for the Double Row)
- Leave blank if not needed
- AP= With
- J. Lead Free

Mates with:
BSTC-7
TSHC-7
TSHCR-7

Plating options	
T	Matte Tin all Over
F	Gold Flash over Entire Pin
GT 10	Gold on Contact Area/ Matte Tin on Tail

Specifications:
 Current Rating: 1.0 Ampere
 Insulation Resistance: 1000M Ohms Min.
 Dielectric Withstanding: 300V AC
 Contact Resistance: 20M Ohms Max.
 Operation Temperature: -40°C to +105°C
 Max. Process Temperature
 Wave Solder: Solder Temp. 260 ±5°C
 Immersion period: 5 ±5 secs.
 Reflow Solder: Pre-Heat Temp: 100~150°C for 60 secs max.
 Temperature: min. 210°C for 30 secs max.
 Peak Temperature: 260 ±5°C, 10 ±5 secs.
 Manual Solder: 245 ±3°C 3~5 secs.

Materials:
 Contact Material: Phosphor Bronze
 Insulator Material: LCP, UL94V-0

Tails may be clipped to achieve specific dimensions.
 Products cut to specific sizes are uncancellable/ nonreturnable.
 Parts are subject to change without notice.



PROPRIETARY AND CONFIDENTIAL
 THE INFORMATION CONTAINED IN THIS DRAWING IS THE SOLE PROPERTY OF Major League Electronics. ANY REPRODUCTION IN PART OR AS A WHOLE WITHOUT THE WRITTEN PERMISSION OF Major League Electronics IS PROHIBITED.

UNLESS OTHERWISE SPECIFIED:		NAME		DATE	
DIMENSIONS ARE IN INCHES		DRAWN	EOW	02/23/15	
TOLERANCES:		CHECKED	GWE	02/23/15	
ONE DECIMALS ±.100		ENG APPR.			
TWO DECIMALS ±.010		MFG APPR.			
THREE DECIMALS ±.005		ADDRESS:			
FOUR DECIMALS ±.002		2533 Centennial Blvd. Jeffersonville, IN 47130 Phone: 812-670-4174 Fax: 812-670-4175 E-Mail: mle@mlelectronics.com			
NEXT ASSY	USED ON	MATERIAL		TITLE: LSMSS-7-V SERIES	
		FINISH		SIZE	DWG. NO.
APPLICATION	DO NOT SCALE DRAWING			C	
				SCALE 16:1	SHEET 1 OF 1



REV C