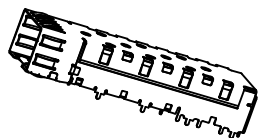


SFP Cage - Exploded View

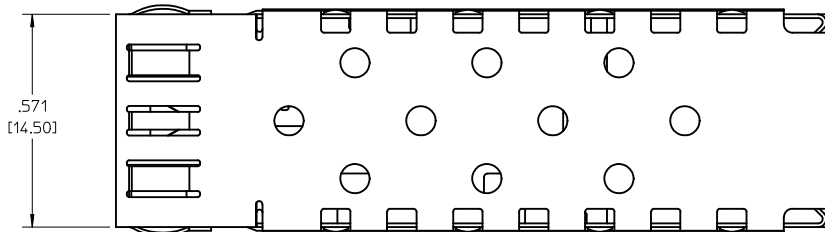
- 1 Material tin plated phosphor-bronze or comparable alloy .010" thick.
- 2 Cage accepts all MSA Small Form-factor Pluggable adapters such as Molex patch cable assembly 73929.
- 3 Sales Drawing Set SD-73927-001 depicts details of press-fit version of cage.
- 4 Sales Drawing Set SD-73927-003 depicts details of surface mount version of cage.

ASSOCIATED PARTS	
MATERIAL NO.	DESCRIPTION
73927-0020	SFP CAGE COVER
73927-0040	SFP CAGE BASE

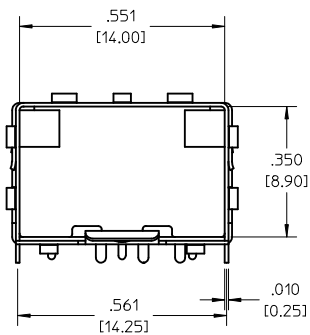
RE-RELEASE - FIX GLITCH EC NO: USY2010-0495 DRWN:MMCKERVEY2010/04/19 CHKD:KJANOTA 2010/04/27 APPR:KJANOTA 2010/04/28	QUALITY SYMBOLS	GENERAL TOLERANCES (UNLESS SPECIFIED)	SCALE 3:1	DESIGN UNITS METRIC	THIRD ANGLE PROJECTION	REVISE ON CAD ONLY
	DESCRIPTION ▼ = 0 ∇ = 0	mm	INCH	DIMENSION STYLE IN/MM		TITLE SFP CAGE ASSEMBLY SOLDER POST VERSION
		4 PLACES ± .005	± .005	DRAWN BY DIRKERS	DATE 2000/09/05	
	3 PLACES ± .005	± .005	CHECKED BY DOYE	DATE 2000/09/05		
2 PLACES ± .005	± .005	APPROVED BY RUSSELL	DATE 2000/09/05			
1 PLACE ± 0.13	± .005	ANGULAR ± 1/2°	DRAFT WHERE APPLICABLE		MOLEX INCORPORATED MATERIAL NO. 73927-0002 DOCUMENT NO. SD-73927-002	
B1	REV	MUST REMAIN WITHIN DIMENSIONS	THIS DRAWING CONTAINS INFORMATION THAT IS PROPRIETARY TO MOLEX INCORPORATED AND SHOULD NOT BE USED WITHOUT WRITTEN PERMISSION		SHEET NO. 1 OF 6 B	



ISOMETRIC
SCALE 1:1



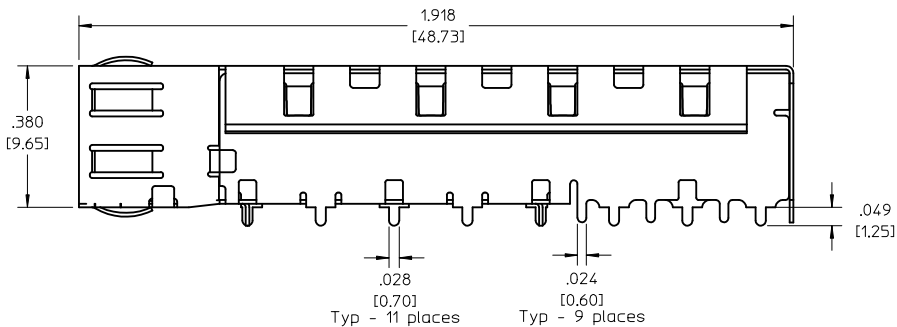
.571
[14.50]



.551
[14.00]

.350
[8.90]

.561 [14.25] .010 [0.25]



1.918
[48.73]

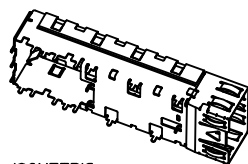
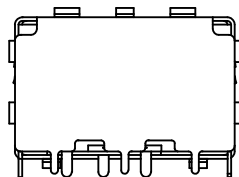
.380
[9.65]

.049
[1.25]

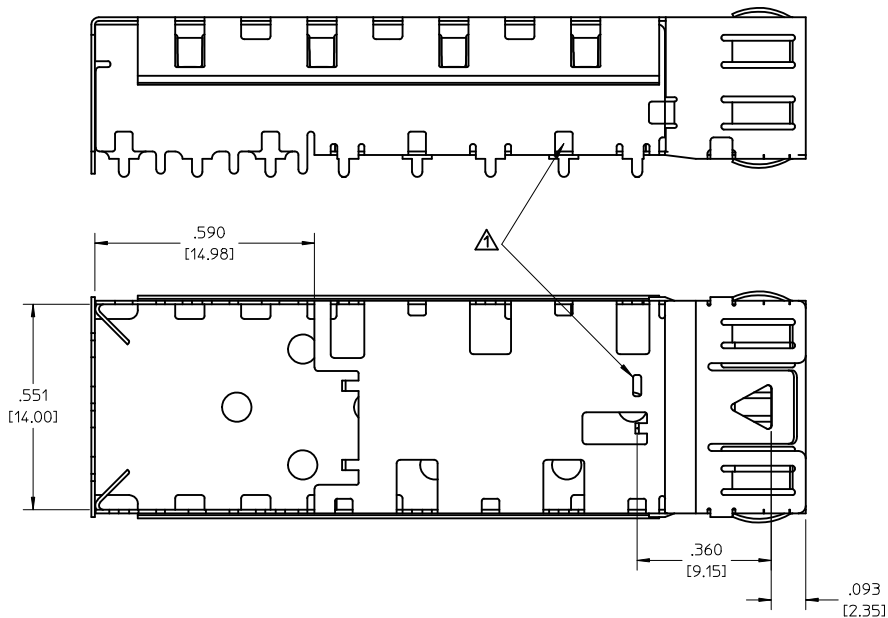
.028 [0.70] Typ - 11 places
.024 [0.60] Typ - 9 places

1 Solder posts sized to fit MSA standard hole pattern and sizes

RE-RELEASE - FIX GLITCH EC NO: USY2010-0495 DRWN:MMCKERVE/2010/04/19 CHKD:KJANOTA 2010/04/27 APPR:KJANOTA 2010/04/28 B1	QUALITY SYMBOLS ▽ = 0 ∇ = 0	GENERAL TOLERANCES (UNLESS SPECIFIED) mm INCH 4 PLACES ± --- ± --- 3 PLACES ± --- ± .005 2 PLACES ± --- ± --- 1 PLACE ± 0.13 ± --- ANGULAR ± 1/2°	SCALE 5:1 DESIGN UNITS METRIC DIMENSION STYLE IN/MM	THIRD ANGLE PROJECTION REVISE ON CAD ONLY
		DRAFT WHERE APPLICABLE MUST REMAIN WITHIN DIMENSIONS	DRAWN BY DIRKERS DATE 2000/09/05 CHECKED BY DOYE DATE 2000/09/05 APPROVED BY RUSSELL DATE 2000/09/05	TITLE SFP CAGE ASSEMBLY SOLDER POST VERSION MOLEX INCORPORATED
			MATERIAL NO. 73927-0002 DOCUMENT NO. SD-73927-002 SHEET NO. 2 OF 6	
			THIS DRAWING CONTAINS INFORMATION THAT IS PROPRIETARY TO MOLEX INCORPORATED AND SHOULD NOT BE USED WITHOUT WRITTEN PERMISSION	

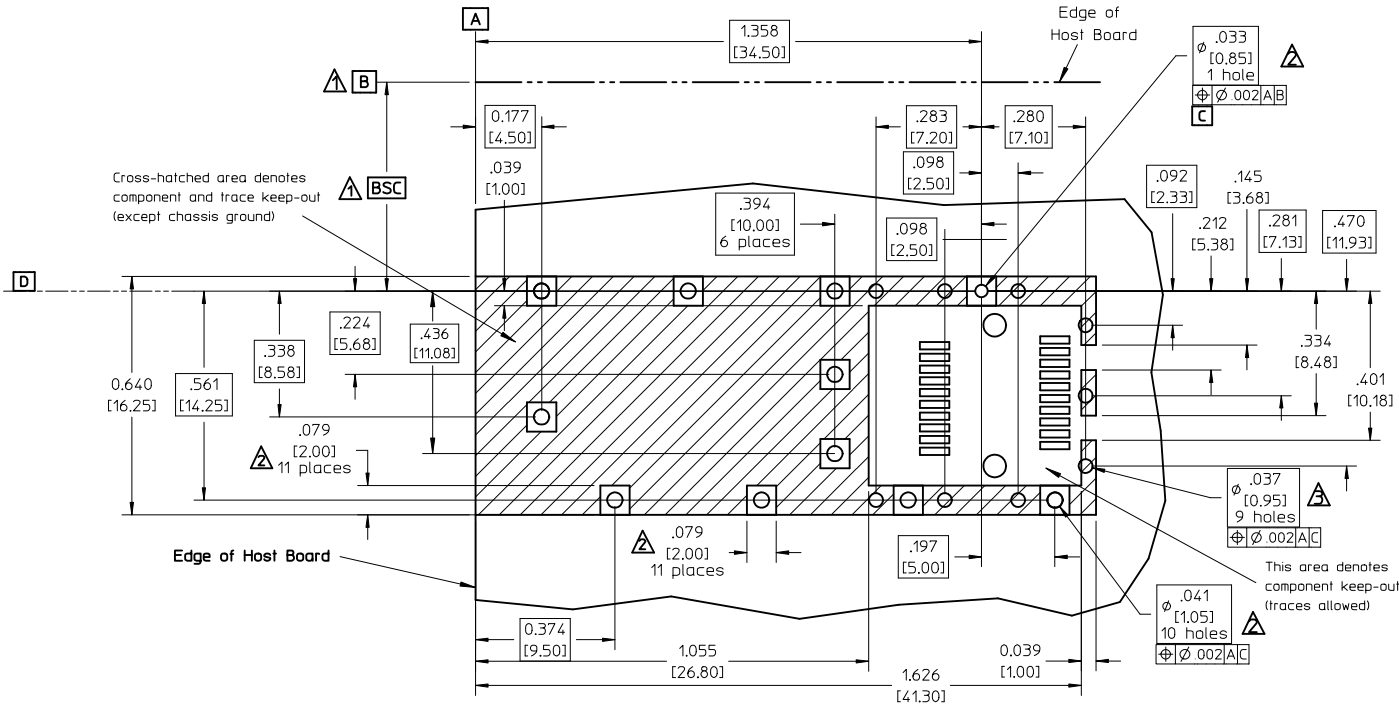


ISOMETRIC
SCALE 1:1



▲ Countercuts accept press-fit pins or solder posts of cage mounted on underside of same host PCB.

RE-RELEASE - FIX GLITCH EC NO: USY2010-0495 DRWN:MMCKERVEY2010/04/19 CHKD:KJANOTA 2010/04/27 APPR:KJANOTA 2010/04/28	QUALITY SYMBOLS	GENERAL TOLERANCES (UNLESS SPECIFIED)		SCALE 5:1	DESIGN UNITS METRIC	THIRD ANGLE PROJECTION	REVISE ON CAD ONLY	
	▼ = 0 ∇ = 0		mm	INCH	DIMENSION STYLE IN/MM		TITLE	
		4 PLACES	± ---	± ---	DRAWN BY DIRKERS	DATE 2000/09/05	SFP CAGE ASSEMBLY SOLDER POST VERSION	
		3 PLACES	± ---	± .005	CHECKED BY DOYE	DATE 2000/09/05	MOLEX INCORPORATED	
		2 PLACES	± ---	± ---	APPROVED BY RUSSELL	DATE 2000/09/05	MATERIAL NO. 73927-0002	
		1 PLACE	± 0.13	± ---	DRAFT WHERE APPLICABLE MUST REMAIN WITHIN DIMENSIONS		DOCUMENT NO. SD-73927-002	
			ANGULAR ±1/2°		THIS DRAWING CONTAINS INFORMATION THAT IS PROPRIETARY TO MOLEX INCORPORATED AND SHOULD NOT BE USED WITHOUT WRITTEN PERMISSION		SHEET NO. 3 OF 6	
B1	REV						B	

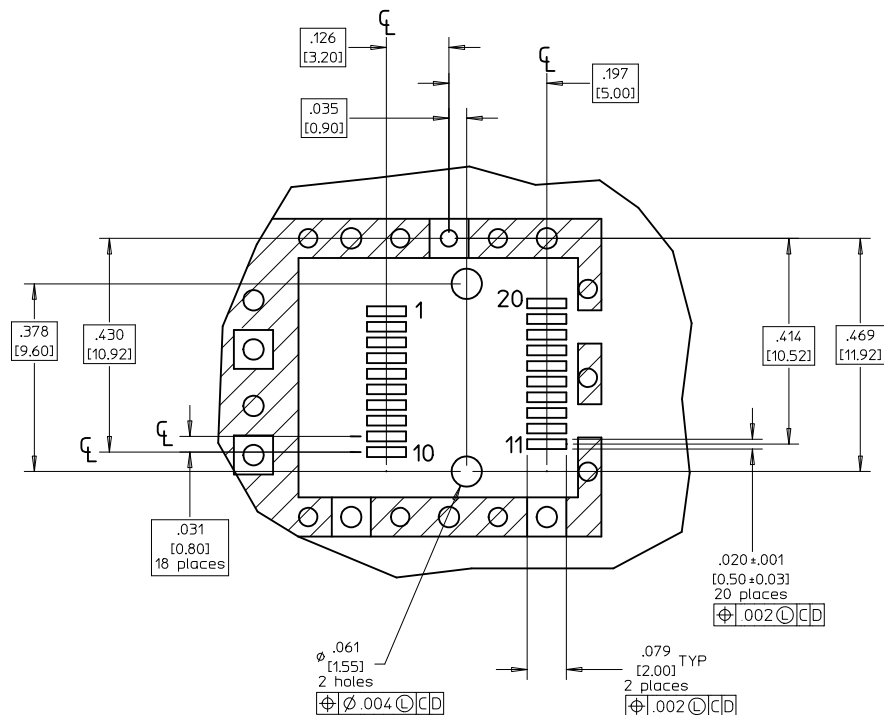


Cross-hatched area denotes component and trace keep-out (except chassis ground)

This area denotes component keep-out (traces allowed)

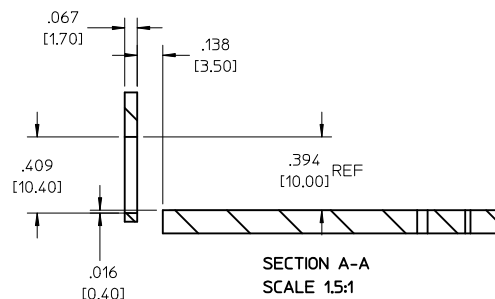
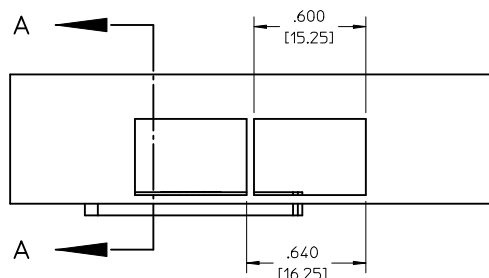
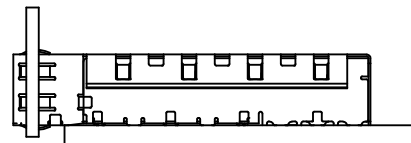
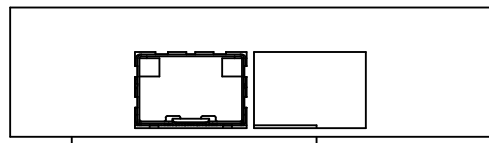
- ▲ Datum and basic dimensions established by customer.
- ▲ Vias and pads chassis ground, plated through, 11 places. Pads optional.
- ▲ Holes optionally plated through.
- 4. Hole pattern allows two parts to be mounted "belly-to-belly" on .090-.125" nom. boards. Hole layout shown for one side only. Transceiver profile determines minimum board thickness in "belly-to-belly" applications.
- 5. "Belly-to-belly" mounting on boards < .090" nom. requires modifying some cage features.

RE-RELEASE - FIX GLITCH EC NO: USY2010-0495 DRWN:MMCKERVEY 2010/04/19 CHKD:KJANOTA 2010/04/27 APPR:KJANOTA 2010/04/28	QUALITY SYMBOLS	GENERAL TOLERANCES (UNLESS SPECIFIED)	SCALE 3:1	DESIGN UNITS METRIC	THIRD ANGLE PROJECTION	REVISE ON CAD ONLY
	▼ = 0 ∇ = 0	4 PLACES ± --- ± --- 3 PLACES ± --- ± .005 2 PLACES ± --- ± --- 1 PLACE ± 0.13 ± ---	DIMENSION STYLE IN/MM DRAWN BY DIRKERS DATE 2000/09/05 CHECKED BY DOYE DATE 2000/09/05 APPROVED BY RUSSELL DATE 2000/09/05	TITLE SFP CAGE ASSEMBLY SOLDER POST VERSION		
		ANGULAR ± 1/2° DRAFT WHERE APPLICABLE MUST REMAIN WITHIN DIMENSIONS	MATERIAL NO. 73927-0002 DOCUMENT NO. SD-73927-002 SHEET NO. 4 OF 6			
	B1	MOLEX INCORPORATED THIS DRAWING CONTAINS INFORMATION THAT IS PROPRIETARY TO MOLEX INCORPORATED AND SHOULD NOT BE USED WITHOUT WRITTEN PERMISSION				



- 1 Hole pattern shown depicts both sets of holes needed for mounting two cages "belly-to-belly".
- 2 Connector pad pattern per MSA, will accommodate surface mount Molex connector 74441-0001 or equivalent.

RE-RELEASE - FIX GLITCH EC NO: USY2010-0495 DRWN: MMCKERVEY 2010/04/19 CHKD: KJANOTA 2010/04/27 APPR: KJANOTA 2010/04/28	QUALITY SYMBOLS ▽ = 0 ∇ = 0	GENERAL TOLERANCES (UNLESS SPECIFIED)		SCALE 3:1	DESIGN UNITS METRIC	THIRD ANGLE PROJECTION	REVISE ON CAD ONLY
		4 PLACES ± --- ± --- 3 PLACES ± --- ± .005 2 PLACES ± --- ± --- 1 PLACE ± 0.13 ± ---	DIMENSION STYLE IN/MM	TITLE SFP CAGE ASSEMBLY SOLDER POST VERSION			
		DRAFT WHERE APPLICABLE MUST REMAIN WITHIN DIMENSIONS		DRAWN BY DIRKERS	DATE 2000/09/05	MOLEX INCORPORATED	
				CHECKED BY DOYE	DATE 2000/09/05	MATERIAL NO. 73927-0002	DOCUMENT NO. SD-73927-002
B1	REV			APPROVED BY RUSSELL		DATE 2000/09/05	THIS DRAWING CONTAINS INFORMATION THAT IS PROPRIETARY TO MOLEX INCORPORATED AND SHOULD NOT BE USED WITHOUT WRITTEN PERMISSION



1 Relational geometry per MSA standard.

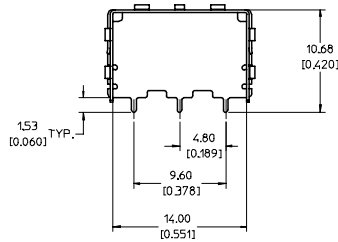
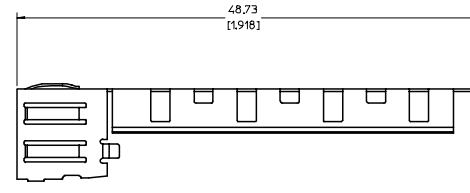
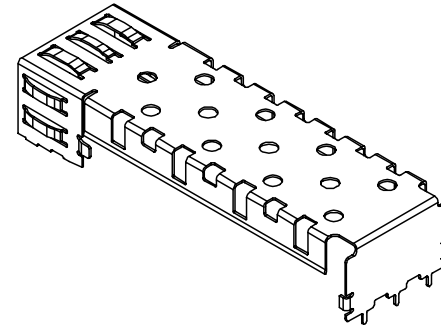
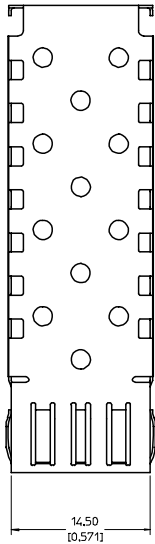
RE-RELEASE - FIX GLITCH
 EC NO: USY2010-0495
 DRWN:MMCKERVEY2010/04/19
 CHKD:KJANOTA 2010/04/27
 APPR:KJANOTA 2010/04/28

REV	DESCRIPTION
B1	

QUALITY SYMBOLS	GENERAL TOLERANCES (UNLESS SPECIFIED)	
	mm	INCH
▽ = 0	4 PLACES ± ---	± ---
	3 PLACES ± ---	± .005
	2 PLACES ± ---	± ---
	1 PLACE ± 0.13	± ---
	ANGULAR ± 1/2°	
	DRAFT WHERE APPLICABLE	
	MUST REMAIN WITHIN DIMENSIONS	

SCALE 3:1	DESIGN UNITS METRIC
DIMENSION STYLE IN/MM	
DRAWN BY DIRKERS	DATE 2000/09/05
CHECKED BY DOYE	DATE 2000/09/05
APPROVED BY RUSSELL	DATE 2000/09/05

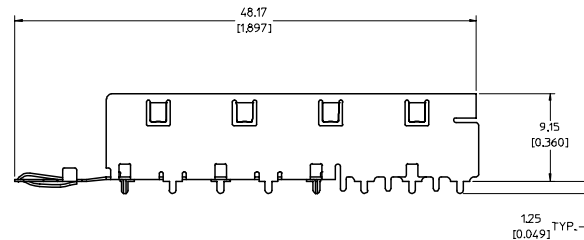
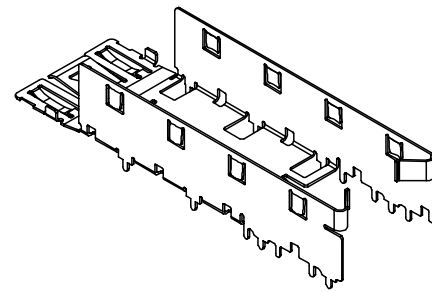
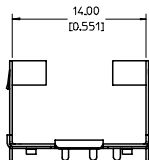
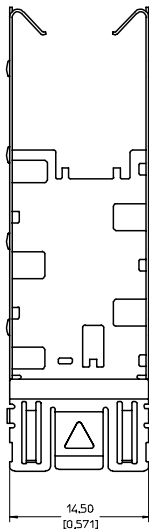
THIRD ANGLE PROJECTION	REVISE ON CAD ONLY
TITLE SFP CAGE ASSEMBLY SOLDER POST VERSION	
MATERIAL NO. 73927-0002	
DOCUMENT NO. SD-73927-002	SHEET NO. 6 OF 6
THIS DRAWING CONTAINS INFORMATION THAT IS PROPRIETARY TO MOLEX INCORPORATED AND SHOULD NOT BE USED WITHOUT WRITTEN PERMISSION	



NOTES:

1. MATERIAL: COPPER ALLOY
2. PLATING: BRIGHT TIN
2.54 MICROMETERS TIN (MIN)
OVER 0.76 MICROMETERS (MIN) NICKEL
3. FOR DETAILS OF PCB AND BEZEL LAYOUT REFER TO DOCUMENT SD-73927-100.
4. THIS PRODUCT NOT INTENDED FOR LEAD FREE, (RoHS), REFLOW PROCESS.
REFLOW TEMPERATURE SHOULD NOT EXCEED 180°C
5. FOR RoHS COMPLIANT REPLACEMENTS REFER TO MOLEX SERIES 74737.

ENTER DESCRIPTION EC NO: UST2006-0264 DRAWN BY: DRWNS/IMONSON 2006/07/03 CHECKED BY: CHKCB/RUSSELL 2006/07/06 APPR: BRUSSELL 2006/07/24	QUALITY SYMBOLS	GENERAL TOLERANCES (UNLESS SPECIFIED)		DIMENSION STYLE		SCALE	DESIGN UNITS	THIRD ANGLE PROJECTION	
	$\nabla=0$ $\nabla=0$	mm	INCH	MM/IN		4:1	METRIC		
		4 PLACES ± --- ± ---	3 PLACES ± --- ± .005	2 PLACES ± 0.13 ± .01	1 PLACE ± 0.25 ± ---	DRAWN BY: KS IMONSON 2005/10/12	DATE	TITLE	SFP CAGE COVER
		ANGULAR ± 1 °		APPROVED BY: BRUSSELL 2005/10/12		DATE			
	DRAFT WHERE APPLICABLE MUST REMAIN WITHIN DIMENSIONS		MATERIAL NO: 739270020		DOCUMENT NO: SD-73927-0020		SHEET NO: 1 OF 1		
THIS DRAWING CONTAINS INFORMATION THAT IS PROPRIETARY TO MOLEX INCORPORATED AND SHOULD NOT BE USED WITHOUT WRITTEN PERMISSION									



NOTES:

1. MATERIAL: COPPER ALLOY
2. PLATING: BRIGHT TIN
2.54 MICROMETERS TIN (MIN)
OVER 0.76 MICROMETERS (MIN) NICKEL
3. FOR DETAILS OF PCB AND BEZEL LAYOUT REFER TO DOCUMENT SD-73927-100.
4. THIS PRODUCT NOT INTENDED FOR LEAD FREE, (RoHS), REFLOW PROCESS. REFLOW TEMPERATURE SHOULD NOT EXCEED 180°C
5. FOR RoHS COMPLIANT REPLACEMENTS REFER TO MOLEX SERIES 74737.

ENTER DESCRIPTION EC NO: UST2006-0264 DRAWN BY: DRINKS IMONSON 2006/07/03 CHECKED BY: CHUCK BRUSSELL 2006/07/06 APPR: BRUSSELL 2006/07/24	QUALITY SYMBOLS	GENERAL TOLERANCES (UNLESS SPECIFIED)	DIMENSION STYLE	SCALE	DESIGN UNITS	THIRD ANGLE PROJECTION
	▼=0 ▽=0	mm INCH 4 PLACES ± --- ± --- 3 PLACES ± --- ± .005 2 PLACES ± 0.13 ± .01 1 PLACE ± 0.25 ± --- ANGULAR ± 1 °	MM/IN DRAWN BY: KS IMONSON DATE: 2005/10/12 CHECKED BY: BRUSSELL DATE: 2005/10/12 APPROVED BY: BRUSSELL DATE: 2005/10/12	4:1	METRIC	
DRAFT WHERE APPLICABLE MUST REMAIN WITHIN DIMENSIONS	MATERIAL NO: 739270040	DOCUMENT NO: SD-73927-0040	TITLE: SFP CAGE BASE SOLDER POSTS FOR WAVE SOLDER		MOLEX INCORPORATED	SHEET NO: 1 OF 1