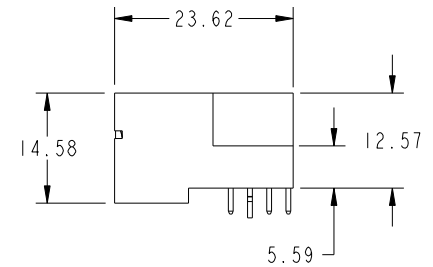
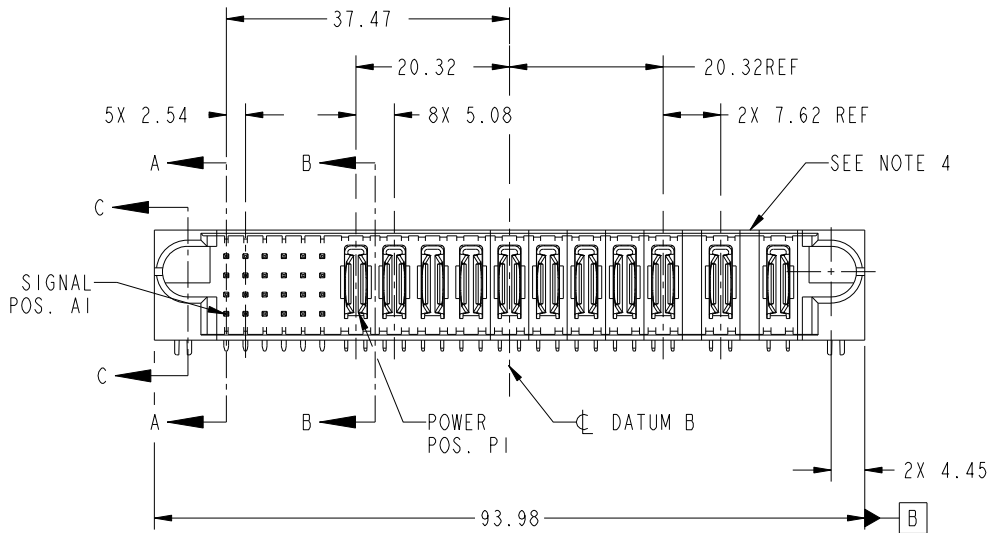
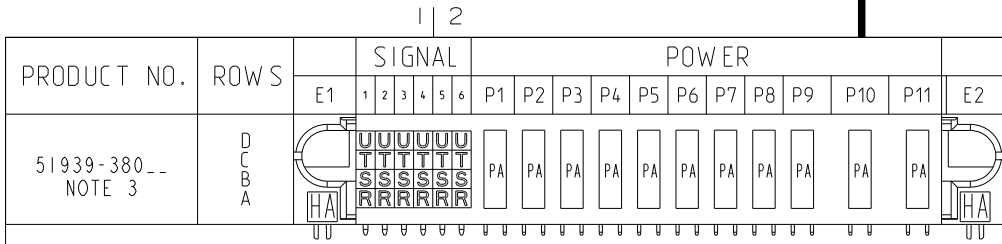


Tous droits strictement réservés. Reproduction ou communication a des tiers interdite sous quelque forme que ce soit sans autorisation écrite du propriétaire. Propriété de c.FCI. Droits de reproduction FCI.

All rights strictly reserved. Reproduction or issue to third parties in any form whatever is not permitted without written authority from the proprietor. Property of FCI. Copyright FCI.



| CODE | DIM "M" MATING LENGTH | CONTACT TYPE |
|------|-----------------------|--------------|
| U | [6.86] | SIGNAL |
| T | [6.86] | SIGNAL |
| S | [6.86] | SIGNAL |
| R | [6.86] | SIGNAL |
| PA | [N/A] | POWER |
| HA | [N/A] | HOLD-DOWN |

| | | | | | | | | | | | |
|-------------|----------------|-----|----------|----------|------------|---------------------------------------|--|----------------|--|--------------------|--|
| mat'l code | | | | SEE NOTE | | tolerances unless otherwise specified | | CUSTOMER | | FCI | |
| ltr | ecn no. | dr | date | linear | 0.X ±0.5 | COPY | | projection | | www.fciconnect.com | |
| A | DG08-0275 | W D | 09/18/08 | angles | 0.XX ±0.25 | MM | | title | | 24S + IIP | |
| | | | | | 0.XXX ±0.1 | MM | | product family | | PwrBlade | |
| | | | | dr | 0° ±2° | scale | | size | | dwg no | |
| | | | | enr | 0° ±2° | 1:1 | | A | | 51939-380 | |
| | | | | chr | 0° ±2° | | | | | code | |
| | | | | appd | 0° ±2° | | | | | 213 | |
| sheet index | revision sheet | A | A | A | A | | | | | sheet 1 of 4 | |
| | | 1 | 2 | 3 | 4 | | | | | | |

A

B

A

B

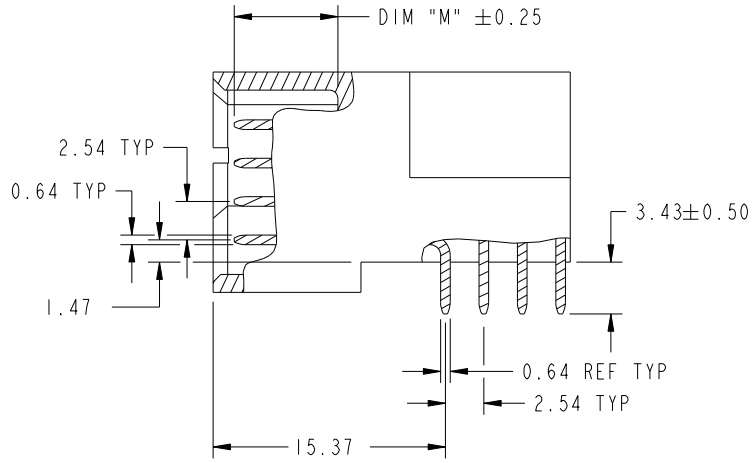
Tous droits strictement reserves. Reproduction ou communication a des tiers interdite sous quelque forme que ce soit sans autorisation ecrite du proprietaire. Propriete de c.FCI. Droits de reproduction FCI.

All rights strictly reserved. Reproduction or issue to third parties in any form whatever is not permitted without written authority from the proprietor. Property of FCI. Copyright FCI.

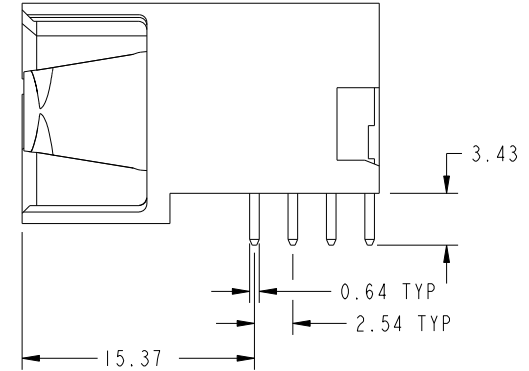


PRODUCT NUMBER

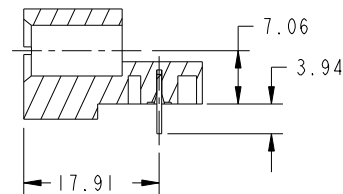
51939-380__
NOTE: 3



BROKEN-OUT SECTION A-A
SCALE 2:1



BROKEN-OUT SECTION B-B
SCALE 2:1



SECTION C-C

| | | | | | | | | | |
|-------------|---------|----------------|------|---------------------------------------|----------------------|------------|--|---------------------------|--|
| mat'l code | | SEE NOTE | | tolerances unless otherwise specified | | CUSTOMER | | www.fciconnect.com | |
| ltr | ecn no. | dr | date | linear | 0.X ±0.5 | COPY | | title | |
| A | | | | linear | 0.XX ±0.25 | projection | | 24S + 11P | |
| | | | | angles | 0.XXX ±0.1 | | | RIGHT ANGLE SOLDER HEADER | |
| | | | | | 0° ±2° | | | product family | |
| | | | | dr | Warren Du 09/18/08 | MM | | PwrBlade | |
| | | | | enr | Warren Du 09/18/08 | | | code | |
| | | | | chr | Gary Hsieh 09/18/08 | 1:1 | | 213 | |
| | | | | appd | JOSEPH HSIA 09/18/08 | | | sheet | |
| sheet index | | revision sheet | | | | | | 51939-380 | |
| | | | | | | | | 2 of 4 | |

cage code 28506

Pro/E

PDM: Rev: A

STATUS: Released

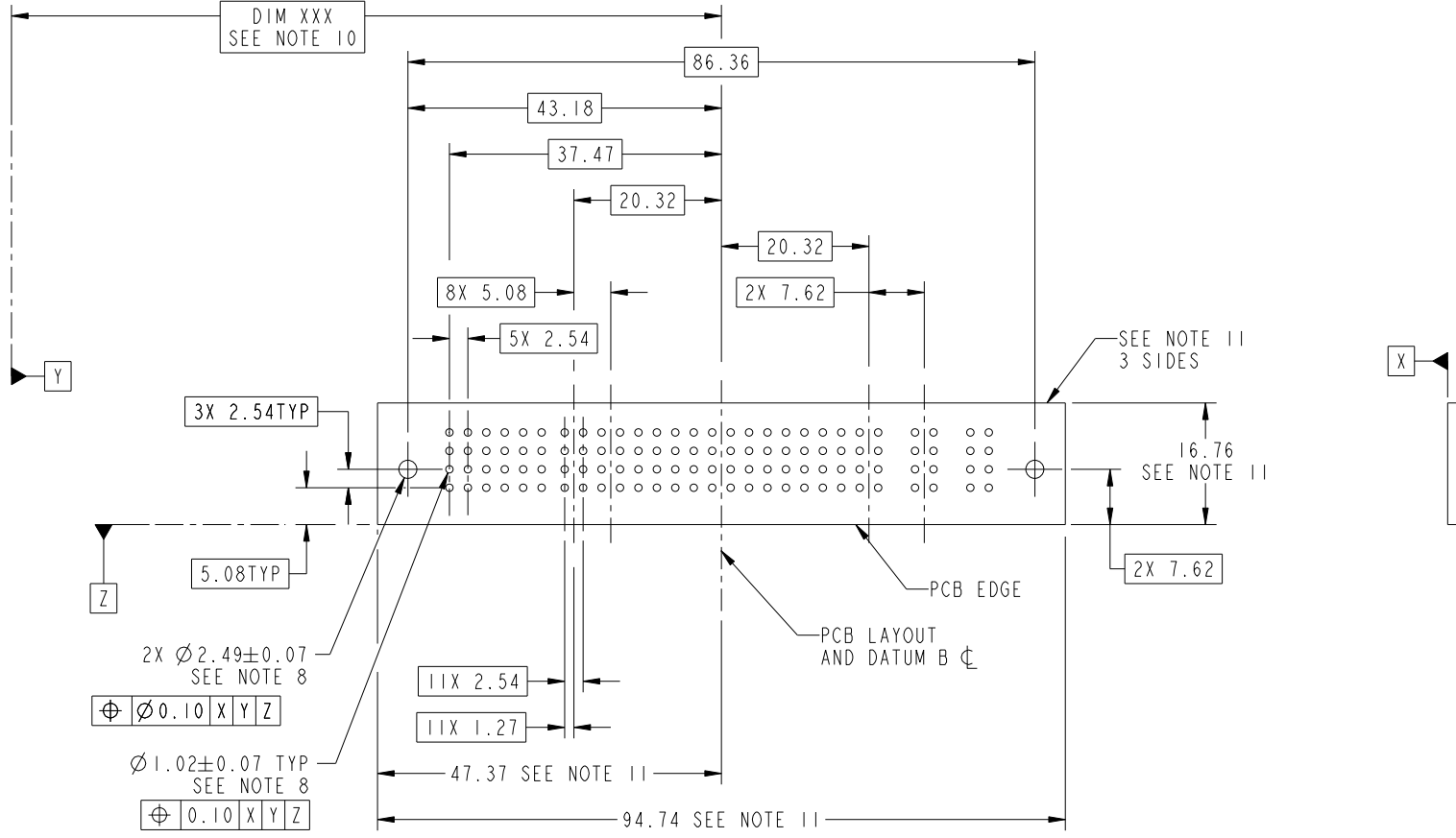
Printed: Dec 20, 2010

Tous droits strictement réservés. Reproduction ou communication a des tiers interdite sous quelque forme que ce soit sans autorisation écrite du propriétaire. Propriété de c.FCI. Droits de reproduction FCI.

All rights strictly reserved. Reproduction or issue to third parties in any form whatever is not permitted without written authority from the proprietor. Property of FCI. Copyright FCI.



PRODUCT NUMBER
51939-380__
NOTE: 3



RECOMMENDED PCB LAYOUT

| | | | | | | | | | |
|-------------|----------------|----------|------|---------------------------------------|----------------------|------------|--|---------------------------|--|
| mat'l code | | SEE NOTE | | tolerances unless otherwise specified | | CUSTOMER | | www.fciconnect.com | |
| ltr | ecn no. | dr | date | linear | 0.X ±0.5 | COPY | | title | |
| A | | | | | 0.XX ±0.25 | projection | | 24S + IIP | |
| | | | | angles | 0.XXX ±0.1 | | | RIGHT ANGLE SOLDER HEADER | |
| | | | | dr | 0° ±2° | MM | | product family | |
| | | | | engr | Warren Du 09/18/08 | scale | | PwrBlade | |
| | | | | chr | Warren Du 09/18/08 | 1:1 | | code | |
| | | | | appd | Gary Hsieh 09/18/08 | | | 213 | |
| | | | | | JOSEPH HSIA 09/18/08 | | | sheet | |
| sheet index | revision sheet | | | | | | | 3 of 4 | |
| | | | | | | | | cage code | |
| | | | | | | | | 22506 | |

Tous droits strictement réservés. Reproduction ou communication a des tiers interdite sous quelque forme que ce soit sans autorisation écrite du propriétaire. Propriété de c.FCI. Droits de reproduction FCI.

All rights strictly reserved. Reproduction or issue to third parties in any form whatever is not permitted without written authority from the proprietor. Property of FCI. Copyright FCI.



1 | 2

3

4

PRODUCT NUMBER

51939-380__
NOTE: 3

NOTES:

1. DIMENSIONS AND TOLERANCES ARE IN ACCORDANCE WITH ASME Y14.5M, 1994 UNLESS OTHERWISE SPECIFIED.

CONNECTOR NOTES:


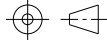

- 2. HOUSING MATERIAL: UL 94 V-0 GLASS FILLED HIGH-TEMP THERMOPLASTIC
POWER CONTACT MATERIAL: COPPER ALLOY
SIGNAL PIN MATERIAL: COPPER ALLOY
 - 3. SEE ITEM 1 & 2 IN PRINT 10064183 FOR PLATING SPEC OF 51939-380 AND 51939-380LF RESPECTIVELY.
 - 4. MANUFACTURER'S NAME, P/N, AND DATE CODE TO APPEAR ON THIS SURFACE.
 - 5. PRODUCT SPECIFICATION GS-12-149.
APPLICATION SPECIFICATION BUS-20-067.
 - 6. PACKAGED IN TRAYS.
- PCB NOTES:
- 7. ALL HOLE DIAMETERS ARE FINISHED HOLE SIZE.
 - 8. MOUNTING HOLES, WHERE APPLICABLE, ARE UNPLATED.
 - 9. $\varnothing 1.151 \pm 0.025$ DRILLED HOLES PLATED WITH
0.008 MIN SnPb OR Sn OVER 0.03
TO 0.08 Cu PLATING TO ACHIEVE
 $\varnothing 1.02 \pm .07$ HOLE.
 - 10. "DIM XXX" TO BE DETERMINED BY THE CUSTOMER.
 - 11. CONNECTOR KEEP-OUT ZONE.

A

A

B

B

| | | | | | | | | | | |
|-------------|---------|----------------|------|---------------------------------------|-------------|----------|---|---|---|------|
| mat'l code | | SEE NOTE | | tolerances unless otherwise specified | | CUSTOMER | |  www.fciconnect.com | | |
| ltr | ecn no. | dr | date | linear | 0.X ±0.5 | | COPY | | title 24S + 11P RIGHT ANGLE SOLDER HEADER | |
| A | | | | | 0.XX ±0.25 | | projection | | | |
| | | | | | 0.XXX ±0.1 | |  | | | |
| | | | | angles | 0° ±2° | |  | | product family PwrBlade | |
| | | | | dr | Warren Du | 09/18/08 | size | | | code |
| | | | | enrg | Warren Du | 09/18/08 | dwg no | | | 213 |
| | | | | chr | Gary Hsieh | 09/18/08 | scale | | sheet | |
| | | | | appd | JOSEPH HSIA | 09/18/08 | 1:1 | | 4 of 4 | |
| sheet index | | revision sheet | | | | | | | | |

1 | 2

Pro/E

PDM: Rev: A

STAT: Released

Printed: Dec 20, 2010

cage code 2856

4