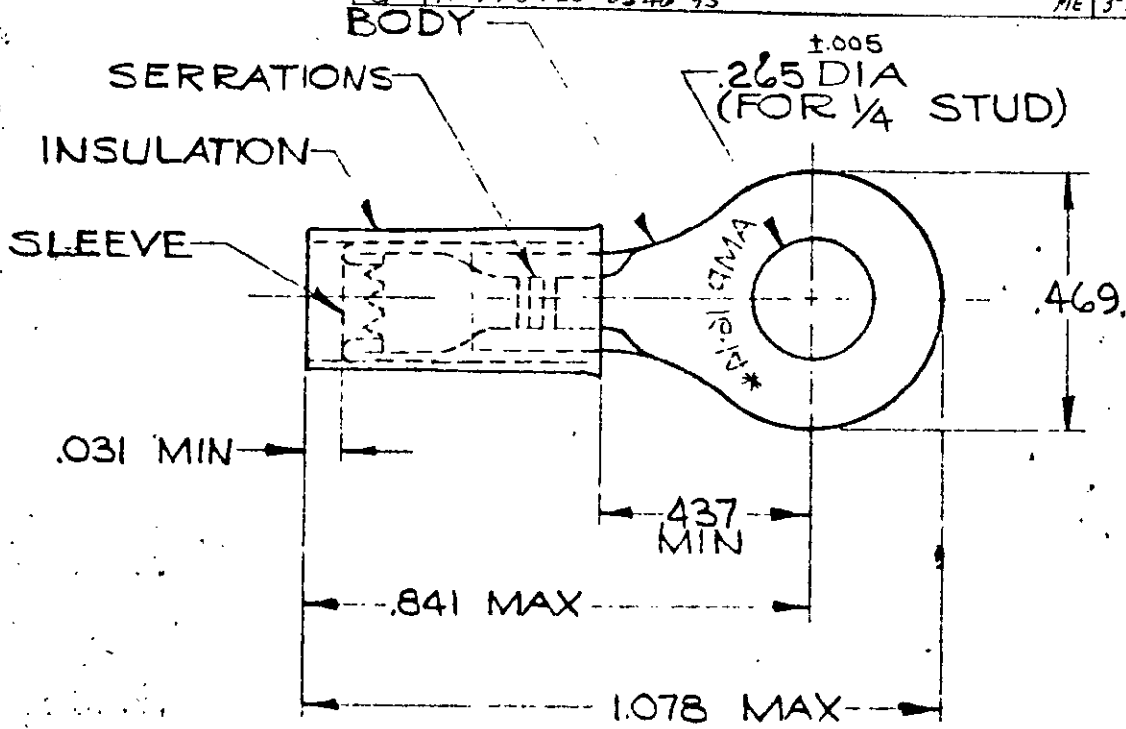


DRAWING MADE IN AMERICAN PROJECTION


LOC **G** PRINT DIST **14**

© 1958 BY AMP INCORPORATED, ALL RIGHTS RESERVED. AMP PRODUCTS COVERED BY PATENTS AND/OR PATENTS PENDING.

REVISIONS			
LTR	DESCRIPTION	DATE	APPROVED
C	REDRAWN, REV. & ADDED TAPE NO. P-6079	3-5-70	FCY
D	2-1 INACTIVE PER P-9360	1-11-82	JRZ
E	REACTIVATE 2-1 P9887	2-24-83	ZY
F	REV PER G-4732	7/26/88	PJK
G	REV 10720-0546-95	3-22-95	MBI



FOR .115 TO .170 WIRE INSULATION DIA.
TONGUE MATERIAL THK. = .031 ±.002

325034 ON TAPE	2-325034-1	BODY: COPPER (QQ-C-576) TIN PL (MIL-T-10727)	
WIRE TERMINAL	325034	SLEEVE: COPPER (QQ-C-576)	
		INSULATION: BLACK NYLON	
QTY	DESCRIPTION	PART NO.	MATERIAL & FINISH
UNLESS OTHERWISE SPECIFIED DIMENSIONS ARE IN INCHES TOLERANCES ON: DECIMALS ± .008 ANGLES ± 5°	CONTRACT NO. #	AMP INCORPORATED HARRISBURG, PENNSYLVANIA	
MATERIAL SEE TABLE	DR. Wayne Williams 2-25-70	 WIRE TERMINAL P. I. D. G. RING TONGUE WIRE SIZE: 16-14	
	CHK. R. Youngblood 3-5-70		
	APPD. Swibel 3-5-70		
	REL. R. Youngblood 3-5-70		
	DSGN APPD.		
OTHER APPD.	SIZE A	CODE IDENT NO. 00779	NUMBER 325034
	SCALE NTS	SHEET 1 OF 1	