

# Magnetic field sensor

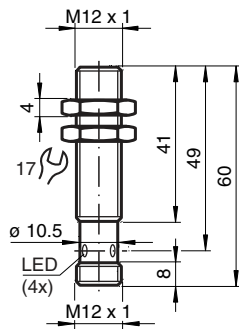
## MMB70-12GH50-1N-V1



- Comfort series
- 70 mm flush



### Dimensions



### Technical Data

#### General specifications

Switching function		Normally open (NO)
Output type		NAMUR
Rated operating distance	$s_n$	5 ... 70 mm
Installation		flush in non-magnetic metal
Output type		2-wire

#### Nominal ratings

Nominal voltage	$U_o$	8.2 V ( $R_i$ approx. 1 k $\Omega$ )
Switching frequency	$f$	0 ... 1000 Hz
Current consumption		
Magnet detected		$\geq 2.5$ mA
Magnet not detected		$\leq 1$ mA
Switching state indicator		LED, yellow

#### Functional safety related parameters

Release date: 2022-03-07 Date of issue: 2022-03-07 Filename: 70108302\_eng.pdf

Refer to "General Notes Relating to Pepperl+Fuchs Product Information".

Pepperl+Fuchs Group  
www.pepperl-fuchs.com

USA: +1 330 486 0001  
fa-info@us.pepperl-fuchs.com

Germany: +49 621 776 1111  
fa-info@de.pepperl-fuchs.com

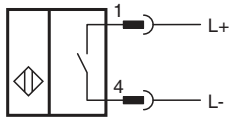
Singapore: +65 6779 9091  
fa-info@sg.pepperl-fuchs.com

**PF** PEPPERL+FUCHS

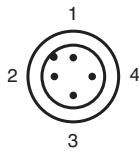
## Technical Data

MTTF <sub>d</sub>	2828 a
Mission Time (T <sub>M</sub> )	20 a
Diagnostic Coverage (DC)	0 %
<b>Compliance with standards and directives</b>	
Standard conformity	
NAMUR	EN 60947-5-6:2000
Standards	EN 60947-5-2:2007 EN 60947-5-2/A1:2012
<b>Approvals and certificates</b>	
IECEx approval	
Equipment protection level Ga	IECEx TUN 20.0007
Equipment protection level Da	IECEx TUN 20.0007
ATEX approval	
Equipment protection level Ga	TÜV 20 ATEX 241336
Equipment protection level Da	TÜV 20 ATEX 241336
<b>Ambient conditions</b>	
Ambient temperature	-25 ... 70 °C (-13 ... 158 °F)
<b>Mechanical specifications</b>	
Connection type	Connector plug M12 x 1 , 4-pin
Housing material	Stainless steel 1.4404 / AISI 316L
Sensing face	Stainless steel 1.4404 / AISI 316L
Degree of protection	IP67
<b>General information</b>	
Use in the hazardous area	see instruction manuals

## Connection

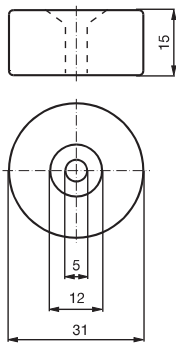


## Connection Assignment

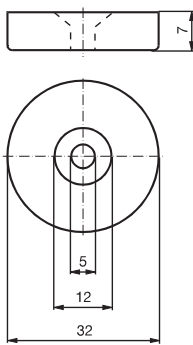


**Additional Information**




**Magnet DM 60-31-15**



**Magnet DM 25-32-07**



**Accessories**

	<b>BF 12</b>	Mounting flange, 12 mm
	<b>DM 60-31-15</b>	Permanent magnet for magnetic field sensors
	<b>DM 25-32-07</b>	Permanent magnet for magnetic field sensors

Release date: 2022-03-07 Date of issue: 2022-03-07 Filename: 70108302\_eng.pdf