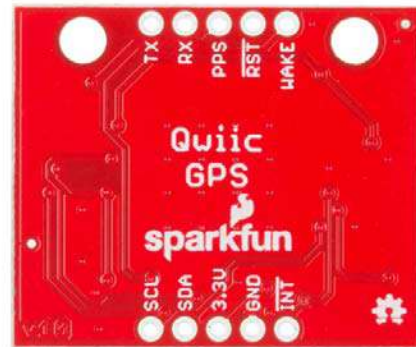
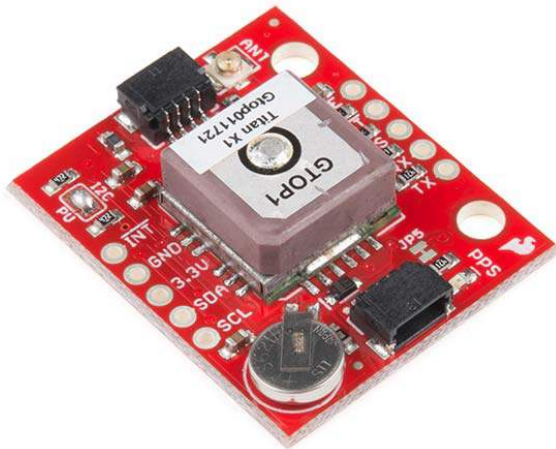




SparkFun GPS Breakout - XA1110 (Qwiic)

GPS-14414 RoHS Open Source Hardware



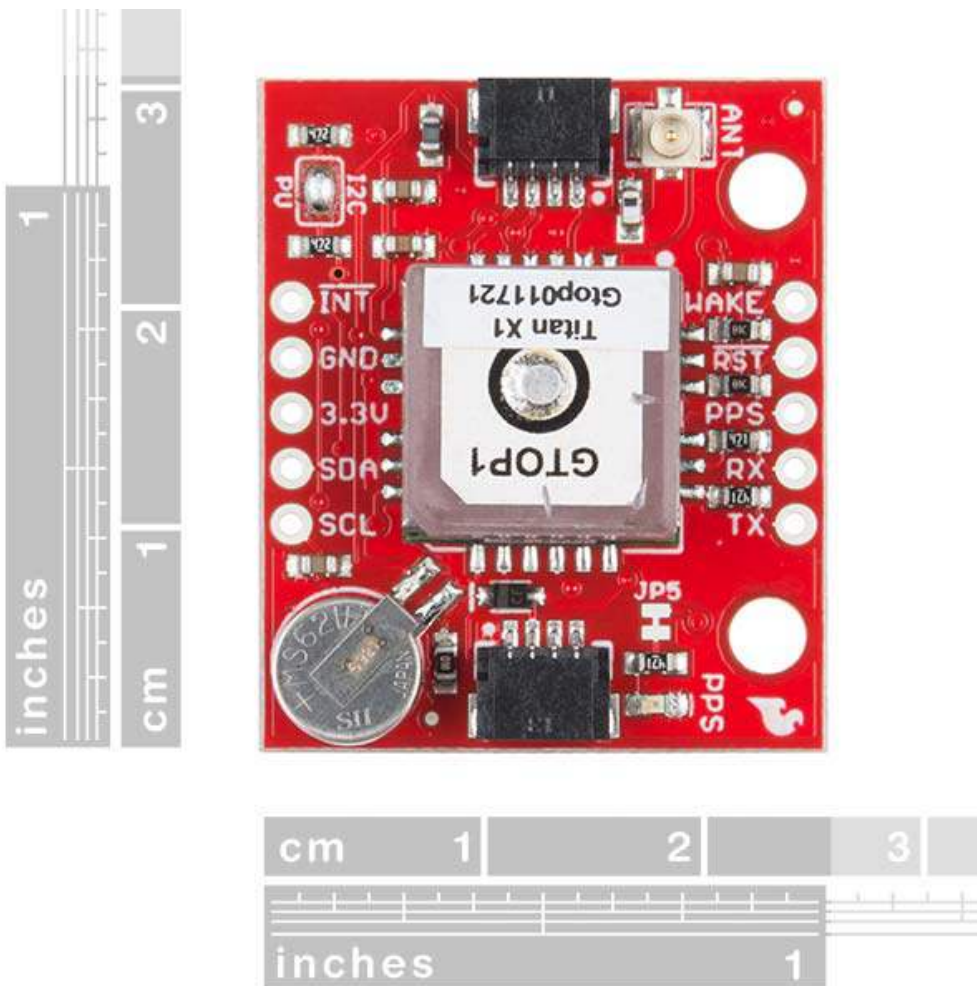
The SparkFun XA1110 GPS Breakout is a small I²C-supported module built for easy hookup, thanks to our Qwiic Connect System. Equipped with the XA1110 GPS module from GTOPI, this board utilizes the MediaTek MT3333 chipset, loaded with specialized SparkFun firmware that enables both I²C and serial ports simultaneously. Using I²C means you won't have to tie up your serial port with GPS, leaving it open to other possibilities.

This GPS Breakout supports up to 210 PRN channels with 99 search channels and 33 simultaneous tracking channels. With support of GPS, GLONASS, QZSS, SBAS and more, the onboard XA1110 can provide even more accurate positioning in multiple locations. Additionally, the XA1110 GPS Breakout is configured with an onboard RTC battery that enables a warm-start functionality, giving the X1 just five seconds to first fix, as well as a U.FL connector that provides you the option to hook up an external antenna via a U.FL cable.

The SparkFun Qwiic Connect System is an ecosystem of I²C sensors, actuators, shields and cables that make prototyping faster and less prone to error. All Qwiic-enabled boards use a common 1mm pitch, 4-pin JST connector. This reduces the amount of required PCB space, and polarized connections mean you can't hook it up wrong.

FEATURES

- 33 tracking/99 acquisition-channel GPS +GLONASS receiver
- Supports QZSS & SBAS (WAAS, EGNOS, MSAS, GAGAN)
- Sensitivity: -165dBm
- Update Rate: up to 10Hz
- 12 multi-tone active interference canceler
- 2x Qwiic connectors
- U.FL connector
- Onboard RTC battery



Notice. This product requires other products in order to function properly.
See [essential products](#).

Essentials
Qwiic Cable - 100mm
PRT-14427
SparkFun Qwiic Shield for Arduino
DEV-14352
SparkFun RedBoard - Programmed with Arduino
DEV-13975