



# KSZ8081MLX

---

---

## 10BASE-T/100BASE-TX Physical Layer Transceiver

---

---

### Features

- Single-Chip 10BASE-T/100BASE-TX IEEE 802.3 Compliant Ethernet Transceiver
- MII Interface Support
- Back-to-Back Mode Support for a 100 Mbps Copper Repeater
- MDC/MDIO Management Interface for PHY Register Configuration
- Programmable Interrupt Output
- LED Outputs for Link and Activity Status Indication
- On-Chip Termination Resistors for the Differential Pairs
- Baseline Wander Correction
- HP Auto MDI/MDI-X to Reliably Detect and Correct Straight-Through and Crossover Cable Connections with Disable and Enable Option
- Auto-Negotiation to Automatically Select the Highest Link-Up Speed (10/100 Mbps) and Duplex (Half/Full)
- Power-Down and Power-Saving Modes
- LinkMD<sup>®</sup> TDR-Based Cable Diagnostics to Identify Faulty Copper Cabling
- Parametric NAND Tree Support for Fault Detection Between Chip I/Os and the Board
- HBM ESD Rating (6 kV)
- Loopback Modes for Diagnostics
- Single 3.3V Power Supply with V<sub>DD</sub> I/O Options for 1.8V, 2.5V, or 3.3V
- Built-In 1.2V Regulator for Core
- Available in 48-pin 7 mm x 7 mm LQFP Package

### Target Applications

- Game Consoles
- IP Phones
- IP Set-Top Boxes
- IP TVs
- LOM
- Printers

## TO OUR VALUED CUSTOMERS

It is our intention to provide our valued customers with the best documentation possible to ensure successful use of your Microchip products. To this end, we will continue to improve our publications to better suit your needs. Our publications will be refined and enhanced as new volumes and updates are introduced.

If you have any questions or comments regarding this publication, please contact the Marketing Communications Department via E-mail at [docerrors@microchip.com](mailto:docerrors@microchip.com). We welcome your feedback.

### Most Current Data Sheet

To obtain the most up-to-date version of this data sheet, please register at our Worldwide Web site at:

<http://www.microchip.com>

You can determine the version of a data sheet by examining its literature number found on the bottom outside corner of any page. The last character of the literature number is the version number, (e.g., DS30000000A is version A of document DS30000000).

### Errata

An errata sheet, describing minor operational differences from the data sheet and recommended workarounds, may exist for current devices. As device/documentation issues become known to us, we will publish an errata sheet. The errata will specify the revision of silicon and revision of document to which it applies.

To determine if an errata sheet exists for a particular device, please check with one of the following:

- Microchip's Worldwide Web site; <http://www.microchip.com>
- Your local Microchip sales office (see last page)

When contacting a sales office, please specify which device, revision of silicon and data sheet (include -literature number) you are using.

### Customer Notification System

Register on our web site at [www.microchip.com](http://www.microchip.com) to receive the most current information on all of our products.

## Table of Contents

|   |    |
|---|----|
| 1.0 Introduction .....                                | 4  |
| 2.0 Pin Description and Configuration .....           | 5  |
| 3.0 Functional Description .....                      | 11 |
| 4.0 Register Descriptions .....                       | 26 |
| 5.0 Operational Characteristics .....                 | 35 |
| 6.0 Electrical Characteristics .....                  | 36 |
| 7.0 Timing Diagrams .....                             | 38 |
| 8.0 Reset Circuit .....                               | 46 |
| 9.0 Reference Circuits — LED Strap-In Pins .....      | 47 |
| 10.0 Reference Clock - Connection and Selection ..... | 48 |
| 11.0 Magnetic - Connection and Selection .....        | 49 |
| 12.0 Package Outline .....                            | 51 |
| Appendix A: Data Sheet Revision History .....         | 52 |
| The Microchip Web Site .....                          | 53 |
| Customer Change Notification Service .....            | 53 |
| Customer Support .....                                | 53 |
| Product Identification System .....                   | 54 |

# KSZ8081MLX

## 1.0 INTRODUCTION

### 1.1 General Description

The KSZ8081MLX is a single-supply 10BASE-T/100BASE-TX Ethernet physical-layer transceiver for transmission and reception of data over standard CAT-5 unshielded twisted pair (UTP) cable.

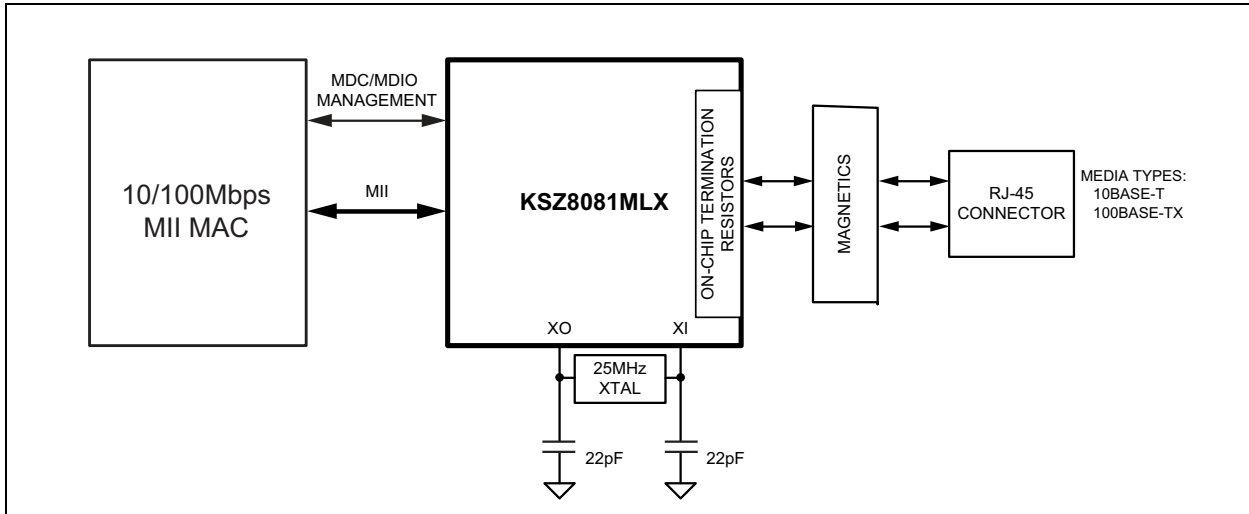
The KSZ8081MLX is a highly-integrated, compact solution. It reduces board cost and simplifies board layout by using on-chip termination resistors for the differential pairs, by integrating a low-noise regulator to supply the 1.2V core, and by offering 1.8/2.5/3.3V digital I/O interface support.

The KSZ8081MLX offers the Media Independent Interface (MII) for direct connection with MII-compliant Ethernet MAC processors and switches.

The KSZ8081MLX provides diagnostic features to facilitate system bring-up and debugging in production testing and in product deployment. Parametric NAND tree support enables fault detection between KSZ8081MLX I/Os and the board. LinkMD<sup>®</sup> TDR-based cable diagnostics identify faulty copper cabling.

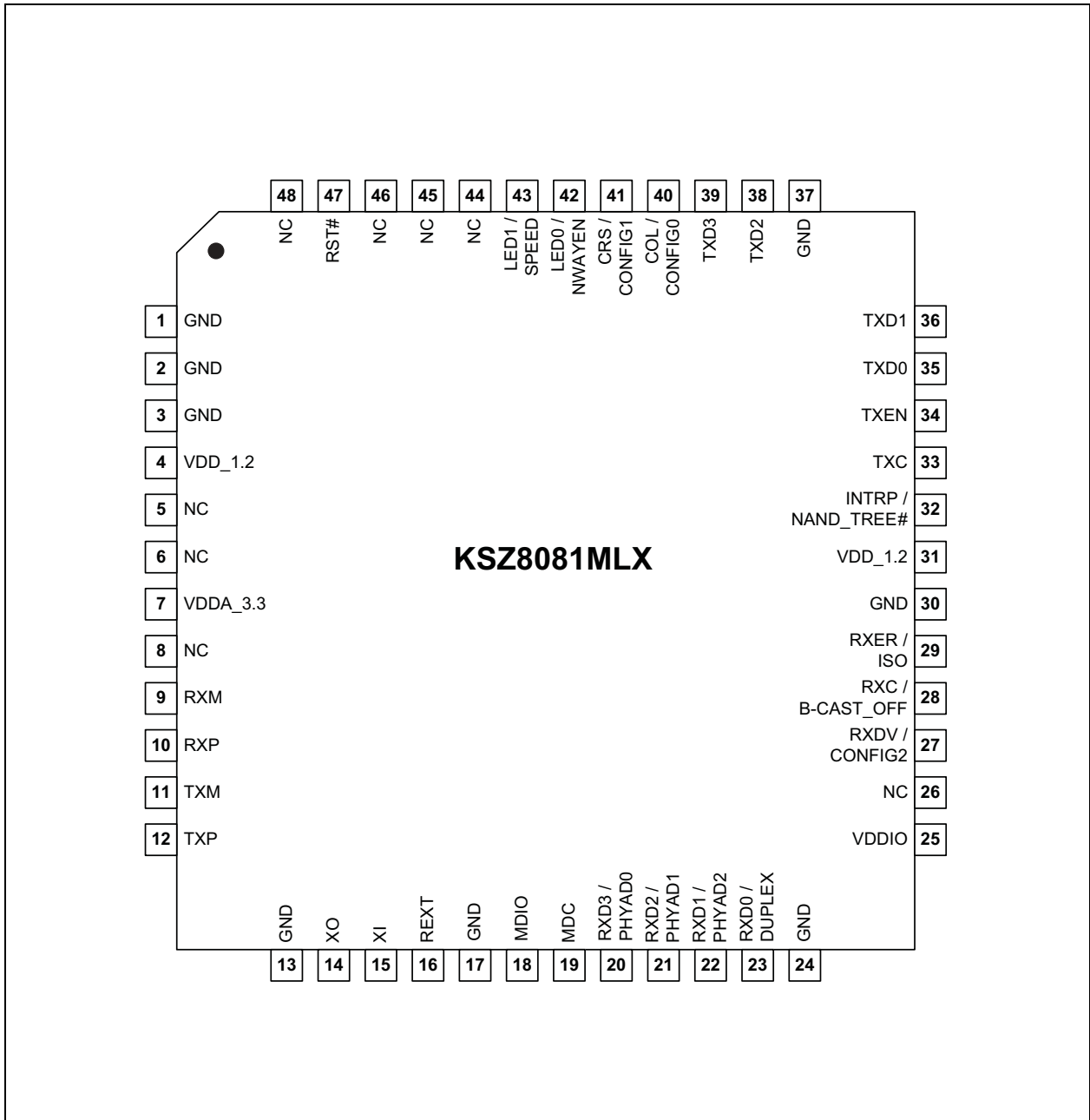
The KSZ8081MLX is available in the 48-pin, lead-free LQFP package.

**FIGURE 1-1: SYSTEM BLOCK DIAGRAM**



## 2.0 PIN DESCRIPTION AND CONFIGURATION

FIGURE 2-1: 48-PIN 7 MM X 7 MM LQFP ASSIGNMENT (TOP VIEW)



# KSZ8081MLX

TABLE 2-1: SIGNALS - KSZ8081MLX

| Pin Number | Pin Name        | Type<br>Note<br>2-1 | Description  |
|------------|-----------------|---------------------|--|
| 1          | GND             | GND                 | Ground.  |
| 2          | GND             | GND                 | Ground.  |
| 3          | GND             | GND                 | Ground.  |
| 4          | VDD_!2          | P                   | 1.2V Core V <sub>DD</sub> (power supplied by KSZ8081MLX). Decouple with 2.2 $\mu$ F and 0.1 $\mu$ F capacitors to ground, and join with Pin 31 by power trace or plane.  |
| 5          | NC              | —                   | No Connect. This pin is not bonded and can be left floating.   |
| 6          | NC              | —                   | No Connect. This pin is not bonded and can be left floating.   |
| 7          | VDDA_3.3        | P                   | 3.3V Analog V <sub>DD</sub> .  |
| 8          | NC              | —                   | No Connect. This pin is not bonded and can be left floating.   |
| 9          | RXM             | I/O                 | Physical Receive or Transmit Signal (– differential).  |
| 10         | RXP             | I/O                 | Physical Receive or Transmit Signal (+ differential).  |
| 11         | TXM             | I/O                 | Physical Transmit or Receive Signal (– differential).  |
| 12         | TXP             | I/O                 | Physical Transmit or Receive Signal (+ differential).  |
| 13         | GND             | GND                 | Ground.  |
| 14         | XO              | O                   | Crystal Feedback for 25 MHz Crystal. This pin is a no connect if an oscillator or external clock source is used.   |
| 15         | XI              | I                   | Crystal/Oscillator/External Clock Input (25 MHz $\pm$ 50 ppm).   |
| 16         | REXT            | I                   | Set PHY Transmit Output Current. Connect a 6.49 k $\Omega$ resistor to ground on this pin.   |
| 17         | GND             | GND                 | Ground.  |
| 18         | MDIO            | Ipu/<br>Opu         | Management Interface (MII) Data I/O. This pin has a weak pull-up, is open-drain, and requires an external 1.0 k $\Omega$ pull-up resistor.   |
| 19         | MDC             | Ipu                 | Management Interface (MII) Clock Input. This clock pin is synchronous to the MDIO data pin.  |
| 20         | RXD3/<br>PHYAD0 | Ipu/O               | MII Mode: MII Receive Data Output[3] (Note 2-2)<br>Config. Mode: The pull-up/pull-down value is latched as PHYADDR[0] at the de-assertion of reset. See the <a href="#">Strap-In Options - KSZ8081MLX</a> section for details. |
| 21         | RXD2/<br>PHYAD1 | Ipd/O               | MII Mode: MII Receive Data Output[2] (Note 2-2)<br>Config. Mode: The pull-up/pull-down value is latched as PHYADDR[1] at the de-assertion of reset. See the <a href="#">Strap-In Options - KSZ8081MLX</a> section for details. |
| 22         | RXD1/<br>PHYAD2 | Ipd/O               | MII Mode: MII Receive Data Output[1] (Note 2-2)<br>Config. Mode: The pull-up/pull-down value is latched as PHYADDR[2] at the de-assertion of reset. See the <a href="#">Strap-In Options - KSZ8081MLX</a> section for details. |

**TABLE 2-1: SIGNALS - KSZ8081MLX (CONTINUED)**

| Pin Number | Pin Name             | Type<br>Note<br>2-1 | Description  |
|------------|----------------------|---------------------|--|
| 23         | RXD0/<br>DUPLEX      | Ipu/O               | MII Mode: MII Receive Data Output[0] (Note 2-2)<br>Config. Mode: The pull-up/pull-down value is latched as DUPLEX at the de-assertion of reset. See the <a href="#">Strap-In Options - KSZ8081MLX</a> section for details.   |
| 24         | GND                  | GND                 | Ground.  |
| 25         | VDDIO                | P                   | 3.3V, 2.5V, or 1.8V Digital V <sub>DD</sub> .  |
| 26         | NC                   | —                   | No Connect. This pin is not bonded and can be left floating.   |
| 27         | RXDV/<br>CONFIG2     | Ipd/O               | MII Mode: MII Receive Data Valid Output.<br>Config. Mode: The pull-up/pull-down value is latched as CONFIG2 at the de-assertion of reset. See the <a href="#">Strap-In Options - KSZ8081MLX</a> section for details.   |
| 28         | RXC/<br>B-CAST_OFF   | Ipd/O               | MII Mode: MII Receive Clock Output.<br>Config. Mode: The pull-up/pull-down value is latched as B-CAST_OFF at the de-assertion of reset. See the <a href="#">Strap-In Options - KSZ8081MLX</a> section for details.   |
| 29         | RXER/<br>ISO         | Ipd/O               | MII Mode: MII Receive Error output<br>Config. Mode: The pull-up/pull-down value is latched as ISOLATE at the de-assertion of reset. See the <a href="#">Strap-In Options - KSZ8081MLX</a> section for details.   |
| 30         | GND                  | GND                 | Ground.  |
| 31         | VDD_1.2              | P                   | 1.2V Core V <sub>DD</sub> (power supplied by KSZ8081MLX). Decouple with 0.1 µF capacitor to ground, and join with Pin 4 by power trace or plane.   |
| 32         | INTRP/<br>NAND_Tree# | Ipu/<br>Opu         | Interrupt Output: Programmable interrupt output.<br>This pin has a weak pull-up, is open drain, and requires an external 1.0 kΩ pull-up resistor.<br>Config. Mode: The pull-up/pull-down value is latched as NAND Tree# at the de-assertion of reset. See the <a href="#">Strap-In Options - KSZ8081MLX</a> section for details. |
| 33         | TXC                  | Ipd/O               | MII Mode: MII Transmit Clock Output.<br>At the de-assertion of reset, this pin needs to latch in a pull-down value for normal operation. If MAC side pulls this pin high, see Register 16h, Bit [15] for solution. It is better having an external pull-down resistor to avoid MAC side pulls this pin high.                     |
| 34         | TXEN                 | I                   | MII Mode: MII Transmit Enable input.   |
| 35         | TXD0                 | I                   | MII Mode: MII Transmit Data Input[0] (Note 2-3)  |
| 36         | TXD1                 | I                   | MII Mode: MII Transmit Data Input[1] (Note 2-3)  |
| 37         | GND                  | GND                 | Ground.  |
| 38         | TXD2                 | I                   | MII Mode: MII Transmit Data Input[2] (Note 2-3)  |
| 39         | TXD3                 | I                   | MII Mode: MII Transmit Data Input[3] (Note 2-3)  |

# KSZ8081MLX

TABLE 2-1: SIGNALS - KSZ8081MLX (CONTINUED)

| Pin Number                            | Pin Name         | Type<br>Note<br>2-1   | Description  |                  |                       |  |
|---------------------------------------|------------------|-----------------------|--|------------------|-----------------------|--|
| 40                                    | COL/<br>CONFIG0  | lpd/O                 | MII Mode: MII Collision Detect output<br>Config. Mode: The pull-up/pull-down value is latched as CONFIG0 at the de-assertion of reset. See the <a href="#">Strap-In Options - KSZ8081MLX</a> section for details.  |                  |                       |  |
| 41                                    | CRS/<br>CONFIG1  | lpd/O                 | MII Mode: MII Carrier Sense Output<br>Config. Mode: The pull-up/pull-down value is latched as CONFIG1 at the de-assertion of reset. See the <a href="#">Strap-In Options - KSZ8081MLX</a> section for details.   |                  |                       |  |
| 42                                    | LED0/<br>NWAYEN  | lpu/O                 | LED Output: Programmable LED0 Output<br>Config. Mode: Latched as auto-negotiation enable (Register 0h, Bit [12]) at the de-assertion of reset. See the Strap-In Options section for details.<br>The LED0 pin is programmable using Register 1Fh Bits [5:4], and is defined as follows: |                  |                       |  |
|                                       |                  |                       | <b>LED Mode = [00]</b>   |                  |                       |  |
|                                       |                  |                       | <b>Link/Activity</b>   | <b>Pin State</b> | <b>LED Definition</b> |  |
|                                       |                  |                       | No Link  | High             | OFF                   |  |
|                                       |                  |                       | Link   | Low              | ON                    |  |
|                                       |                  |                       | Activity   | Toggle           | Blinking              |  |
|                                       |                  |                       | <b>LED Mode = [01]</b>   |                  |                       |  |
|                                       |                  |                       | <b>Link</b>  | <b>Pin State</b> | <b>LED Definition</b> |  |
|                                       |                  |                       | No Link  | High             | OFF                   |  |
|                                       |                  |                       | Link   | Low              | ON                    |  |
|                                       |                  |                       | <b>LED Mode = [10], [11] Reserved</b>  |                  |                       |  |
|                                       |                  |                       | 43   | LED1/<br>SPEED   | lpu/O                 | LED Output: Programmable LED1 output<br>Config. Mode: Latched as Speed (Register 0h, Bit [13]) at the de-assertion of reset. See the Strap-In Options section for details.<br>The LED1 pin is programmable using Register 1Fh Bits [5:4], and is defined as follows: |
|                                       |                  |                       |  |                  |                       | <b>LED Mode = [00]</b>   |
| <b>Speed</b>                          | <b>Pin State</b> | <b>LED Definition</b> |  |                  |                       |  |
| 10BASE-T                              | High             | OFF                   |  |                  |                       |  |
| 100BASE-TX                            | Low              | ON                    |  |                  |                       |  |
| <b>LED Mode = [01]</b>                |                  |                       |  |                  |                       |  |
| <b>Activity</b>                       | <b>Pin State</b> | <b>LED Definition</b> |  |                  |                       |  |
| No Activity                           | High             | OFF                   |  |                  |                       |  |
| Activity                              | Toggle           | Blinking              |  |                  |                       |  |
| <b>LED Mode = [10], [11] Reserved</b> |                  |                       |  |                  |                       |  |



**TABLE 2-1: SIGNALS - KSZ8081MLX (CONTINUED)**

| Pin Number | Pin Name | Type<br>Note 2-1 | Description  |
|------------|----------|------------------|--|
| 44         | TEST/NC  | lpd              | No Connect for normal operation, an external pull-up resistor for NAND tree testing. |
| 45         | NC       | —                | No Connect. This pin is not bonded and can be left floating.                         |
| 46         | NC       | —                | No Connect. This pin is not bonded and can be left floating.                         |
| 47         | RST#     | lpu              | Chip Reset (active low).   |
| 48         | NC       | —                | No Connect. This pin is not bonded and can be left floating.                         |

**Note 2-1** P = power supply  
 GND = ground  
 I = input  
 O = output  
 I/O = bi-directional  
 lpu = Input with internal pull-up (see [Electrical Characteristics](#) for value).  
 lpu/O = Input with internal pull-up (see [Electrical Characteristics](#) for value) during power-up/reset; output pin otherwise.  
 lpd/O = Input with internal pull-down (see [Electrical Characteristics](#) for value) during power-up/reset; output pin otherwise.  
 lpu/Opu = Input with internal pull-up (see [Electrical Characteristics](#) for value) and output with internal pull-up (see [Electrical Characteristics](#) for value).

**Note 2-2** MII RX Mode: The RXD[3:0] bits are synchronous with RXC. When RXDV is asserted, RXD[3:0] presents valid data to the MAC.

**Note 2-3** MII TX Mode: The TXD[3:0] bits are synchronous with TXC. When TXEN is asserted, TXD[3:0] presents valid data from the MAC.

## 2.1 Strap-In Options

The PHYAD[1:0] strap-in pin is latched at the de-assertion of reset. In some systems, the RMII MAC receive input pins may drive high/low during power-up or reset, and consequently cause the PHYAD[1:0] strap-in pin, a shared pin with the RMII CRS\_DV signal, to be latched to the unintended high/low state. In this case an external pull-up (4.7 kΩ) or pull-down (1.0 kΩ) should be added on the PHYAD[1:0] strap-in pin to ensure that the intended value is strapped-in correctly.

**TABLE 2-2: STRAP-IN OPTIONS - KSZ8081MLX**

| Pin Number | Pin Name | Type<br>Note 2-4  | Description   |                   |
|------------|----------|-------------------|---|-------------------|
| 22         | PHYAD2   | lpd/O             | The PHY address is latched at de-assertion of reset and is configurable to any value from 0 to 7. The default PHY address is 00001. PHY address 00000 is enabled only if the B-CAST_OFF strap-in pin is pulled high. PHY address Bits [4:3] are set to 00 by default. |                   |
| 21         | PHYAD1   |                   |   |                   |
| 20         | PHYAD0   |                   |   |                   |
| 27         | CONFIG2  | lpd/O             | The CONFIG[2:0] strap-in pins are latched at the de-assertion of reset.   |                   |
| 41         | CONFIG1  |                   | <b>CONFIG[2:0]</b>  | <b>Mode</b>       |
|            |          |                   | 000   | MI I (default)    |
| 40         | CONFIG0  |                   | 110   | MI I back-to-back |
|            |          | 001 – 101,<br>111 | Reserved, not used  |                   |

# KSZ8081MLX

**TABLE 2-2: STRAP-IN OPTIONS - KSZ8081MLX (CONTINUED)**

| Pin Number | Pin Name   | Type<br><a href="#">Note 2-4</a> | Description  |
|------------|------------|----------------------------------|--|
| 29         | ISO        | lpd/O                            | Isolate Mode:<br>Pull-up = Enable<br>Pull-down (default) = Disable<br>At the de-assertion of reset, this pin value is latched into Register 0h, Bit [10].  |
| 43         | SPEED      | lpu/O                            | Speed Mode:<br>Pull-up (default) = 100 Mbps<br>Pull-down = 10 Mbps<br>At the de-assertion of reset, this pin value is latched into Register 0h, Bit [13] as the speed select, and also is latched into Register 4h (auto-negotiation advertisement) as the speed capability support. |
| 23         | DUPLEX     | lpu/O                            | Duplex Mode:<br>Pull-up (default) = Half-duplex<br>Pull-down = Full-duplex<br>At the de-assertion of reset, this pin value is latched into Register 0h, Bit [8].   |
| 42         | NWAYEN     | lpu/O                            | Nway Auto-Negotiation Enable:<br>Pull-up (default) = Enable auto-negotiation<br>Pull-down = Disable auto-negotiation<br>At the de-assertion of reset, this pin value is latched into Register 0h, Bit [12].  |
| 28         | B-CAST_OFF | lpd/O                            | Broadcast Off – for PHY Address 0:<br>Pull-up = PHY Address 0 is set as an unique PHY address<br>Pull-down (default) = PHY Address 0 is set as a broadcast PHY address<br>At the de-assertion of reset, this pin value is latched by the chip.                                       |
| 32         | NAND_Tree# | lpu/Opu                          | NAND Tree Mode:<br>Pull-up (default) = Disable<br>Pull-down = Enable<br>At the de-assertion of reset, this pin value is latched by the chip.   |

**Note 2-4** lpu/O = Input with internal pull-up (see [Electrical Characteristics](#) for value) during power-up/reset; output pin otherwise.  
 lpd/O = Input with internal pull-down (see [Electrical Characteristics](#) for value) during power-up/reset; output pin otherwise.  
 lpu/Opu = Input with internal pull-up (see [Electrical Characteristics](#) for value) and output with internal pull-up (see [Electrical Characteristics](#) for value).

## 3.0 FUNCTIONAL DESCRIPTION

The KSZ8081MLX is an integrated single 3.3V supply Fast Ethernet transceiver. It is fully compliant with the IEEE 802.3 Specification, and reduces board cost and simplifies board layout by using on-chip termination resistors for the two differential pairs and by integrating the regulator to supply the 1.2V core.

On the copper media side, the KSZ8081MLX supports 10BASE-T and 100BASE-TX for transmission and reception of data over a standard CAT-5 unshielded twisted pair (UTP) cable, and HP Auto MDI/MDI-X for reliable detection of and correction for straight-through and crossover cables.

On the MAC processor side, the KSZ8081MLX offers the Media Independent Interface (MII) for direct connection with MII compliant Ethernet MAC processors and switches.

The MII management bus option gives the MAC processor complete access to the KSZ8081MLX control and status registers. Additionally, an interrupt pin eliminates the need for the processor to poll for PHY status change.

### 3.1 10BASE-T/100BASE-TX Transceiver

#### 3.1.1 100BASE-TX TRANSMIT

The 100BASE-TX transmit function performs parallel-to-serial conversion, 4B/5B encoding, scrambling, NRZ-to-NRZI conversion, and MLT3 encoding and transmission.

The circuitry starts with a parallel-to-serial conversion, which converts the MII data from the MAC into a 125 MHz serial bit stream. The data and control stream is then converted into 4B/5B coding and followed by a scrambler. The serialized data is further converted from NRZ-to-NRZI format, and then transmitted in MLT3 current output. The output current is set by an external 6.49 k $\Omega$  1% resistor for the 1:1 transformer ratio.

The output signal has a typical rise/fall time of 4 ns and complies with the ANSI TP-PMD standard regarding amplitude balance, overshoot, and timing jitter. The wave-shaped 10BASE-T output is also incorporated into the 100BASE-TX transmitter.

#### 3.1.2 100BASE-TX RECEIVE

The 100BASE-TX receiver function performs adaptive equalization, DC restoration, MLT3-to-NRZI conversion, data and clock recovery, NRZI-to-NRZ conversion, de-scrambling, 4B/5B decoding, and serial-to-parallel conversion.

The receiving side starts with the equalization filter to compensate for inter-symbol interference (ISI) over the twisted pair cable. Because the amplitude loss and phase distortion is a function of the cable length, the equalizer must adjust its characteristics to optimize performance. In this design, the variable equalizer makes an initial estimation based on comparisons of incoming signal strength against some known cable characteristics, then tunes itself for optimization. This is an ongoing process and self-adjusts against environmental changes such as temperature variations.

Next, the equalized signal goes through a DC-restoration and data-conversion block. The DC-restoration circuit compensates for the effect of baseline wander and improves the dynamic range. The differential data-conversion circuit converts MLT3 format back to NRZI. The slicing threshold is also adaptive.

The clock-recovery circuit extracts the 125 MHz clock from the edges of the NRZI signal. This recovered clock is then used to convert the NRZI signal into NRZ format. This signal is sent through the de-scrambler, then the 4B/5B decoder. Finally, the NRZ serial data is converted to MII format and provided as the input data to the MAC.

#### 3.1.3 SCRAMBLER/DE-SCRAMBLER (100BASE-TX ONLY)

The scrambler spreads the power spectrum of the transmitted signal to reduce electromagnetic interference (EMI) and baseline wander. The de-scrambler recovers the scrambled signal.

#### 3.1.4 10BASE-T TRANSMIT

The 10BASE-T drivers are incorporated with the 100BASE-TX drivers to allow for transmission using the same magnetic. The drivers perform internal wave-shaping and pre-emphasis, and output 10BASE-T signals with typical amplitude of 2.5V peak. The 10BASE-T signals have harmonic contents that are at least 27 dB below the fundamental frequency when driven by an all-ones Manchester-encoded signal.

#### 3.1.5 10BASE-T RECEIVE

On the receive side, input buffer and level detecting squelch circuits are used. A differential input receiver circuit and a phase-locked loop (PLL) performs the decoding function. The Manchester-encoded data stream is separated into clock signal and NRZ data. A squelch circuit rejects signals with levels less than 400 mV, or with short pulse widths, to prevent

# KSZ8081MLX

---

noise at the RXP and RXM inputs from falsely triggering the decoder. When the input exceeds the squelch limit, the PLL locks onto the incoming signal and the KSZ8081MLX decodes a data frame. The receive clock is kept active during idle periods between data receptions.

## 3.1.6 SQE AND JABBER FUNCTION (10BASE-T ONLY)

In 10BASE-T operation, a short pulse is put out on the COL pin after each frame is transmitted. This SQE test is needed to test the 10BASE-T transmit/receive path. If transmit enable (TXEN) is high for more than 20 ms (jabbering), the 10BASE-T transmitter is disabled and COL is asserted high. If TXEN is then driven low for more than 250 ms, the 10BASE-T transmitter is re-enabled and COL is de-asserted (returns to low).

## 3.1.7 PLL CLOCK SYNTHESIZER

The KSZ8081MLX generates all internal clocks and all external clocks for system timing from an external 25 MHz crystal, oscillator, or reference clock.

## 3.1.8 AUTO-NEGOTIATION

The KSZ8081MLX conforms to the auto-negotiation protocol, defined in Clause 28 of the IEEE 802.3 Specification.

Auto-negotiation allows unshielded twisted pair (UTP) link partners to select the highest common mode of operation.

During auto-negotiation, link partners advertise capabilities across the UTP link to each other and then compare their own capabilities with those they received from their link partners. The highest speed and duplex setting that is common to the two link partners is selected as the mode of operation.

The following list shows the speed and duplex operation mode from highest to lowest priority.

- Priority 1: 100BASE-TX, full-duplex
- Priority 2: 100BASE-TX, half-duplex
- Priority 3: 10BASE-T, full-duplex
- Priority 4: 10BASE-T, half-duplex

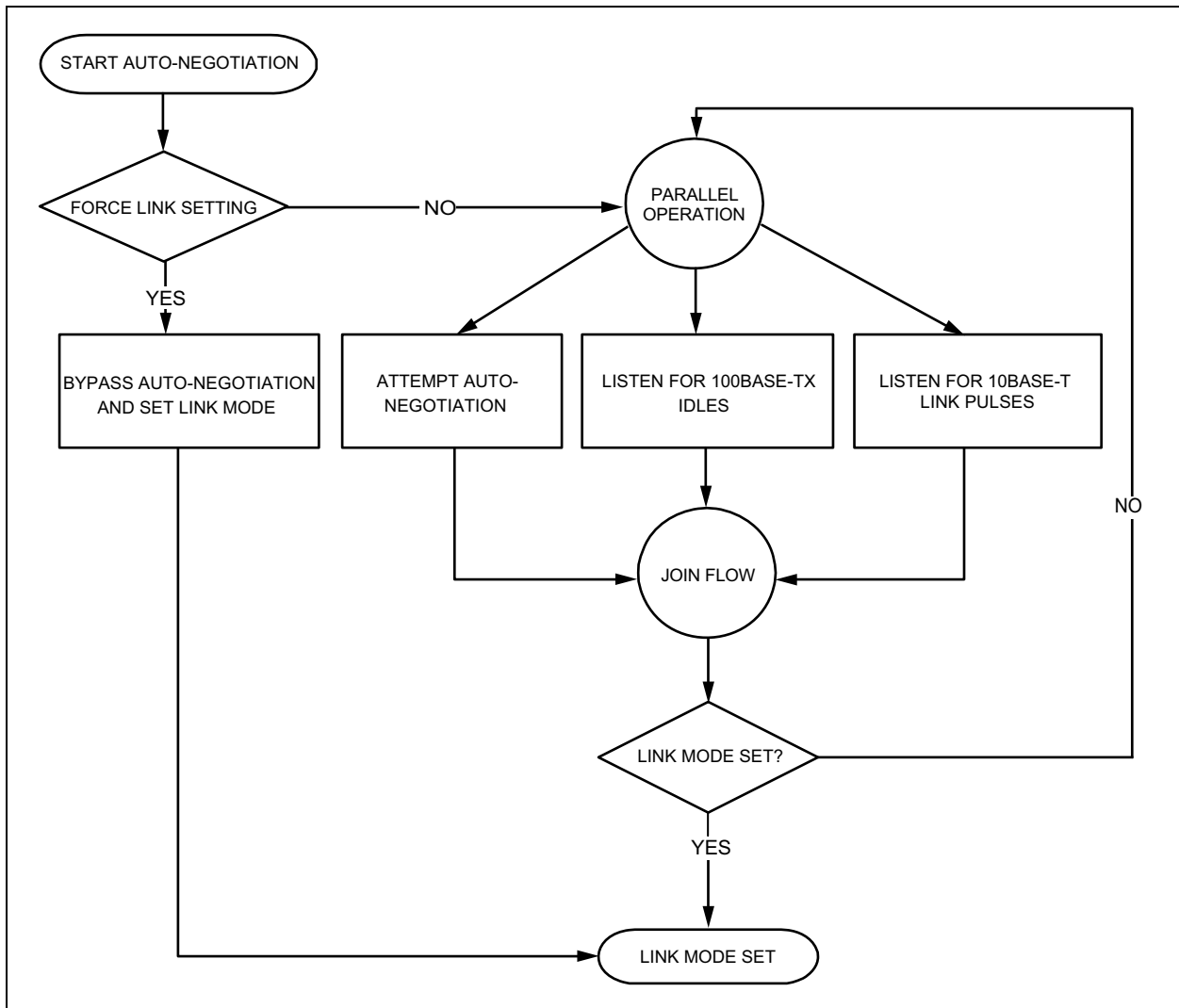
If auto-negotiation is not supported or the KSZ8081MLX link partner is forced to bypass auto-negotiation, then the KSZ8081MLX sets its operating mode by observing the signal at its receiver. This is known as parallel detection, and allows the KSZ8081MLX to establish a link by listening for a fixed signal protocol in the absence of the auto-negotiation advertisement protocol.

Auto-negotiation is enabled by either hardware pin strapping (NWAYEN, Pin 42) or software (Register 0h, Bit [12]).

By default, auto-negotiation is enabled after power-up or hardware reset. After that, auto-negotiation can be enabled or disabled by Register 0h, Bit [12]. If auto-negotiation is disabled, the speed is set by Register 0h, Bit [13], and the duplex is set by Register 0h, Bit [8].

The auto-negotiation link-up process is shown in [Figure 3-1](#).

**FIGURE 3-1: AUTO-NEGOTIATION FLOW CHART**



## 3.2 MII Interface

The Media Independent Interface (MII) is compliant with the IEEE 802.3 Specification. It provides a common interface between MII PHYs and MACs, and has the following key characteristics:

- Pin count is 15 pins (6 pins for data transmission, 7 pins for data reception, and 2 pins for carrier and collision indication).
- 10 Mbps and 100 Mbps data rates are supported at both half- and full-duplex.
- Data transmission and reception are independent and belong to separate signal groups.
- Transmit data and receive data are each 4 bits wide, a nibble.

By default, the KSZ8081MLX is configured to MII mode after it is powered up or hardware reset with the following:

- A 25 MHz crystal connected to XI, XO (Pins 15, 14), or an external 25 MHz clock source (oscillator) connected to XI.
- The CONFIG[2:0] strapping pins (Pins 27, 41, 40) set to 000 (default setting).

### 3.2.1 MII SIGNAL DEFINITION

Table 3-1 describes the MII signals. Refer to Clause 22 of the IEEE 802.3 Specification for detailed information.

# KSZ8081MLX

**TABLE 3-1: MII SIGNAL DEFINITION**

| MII Signal Name | Direction with Respect to PHY, KSZ8081 Signal | Direction with Respect to MAC | Description  |
|-----------------|---|-------------------------------|--|
| TXC             | Output  | Input                         | Transmit Clock<br>(2.5 MHz for 10 Mbps; 25 MHz for 100 Mbps) |
| TXEN            | Input   | Output                        | Transmit Enable  |
| TXD[3:0]        | Input   | Output                        | Transmit Data[3:0]   |
| RXC             | Output  | Input                         | Receive Clock<br>(2.5 MHz for 10 Mbps; 25 MHz for 100 Mbps)  |
| RXDV            | Output  | Input                         | Receive Data Valid   |
| RXD[3:0]        | Output  | Input                         | Receive Data[3:0]  |
| RXER            | Output  | Input or not required         | Receive Error  |
| CRS             | Output  | Input                         | Carrier Sense  |
| COL             | Output  | Input                         | Collision Detection  |

### 3.2.1.1 Transmit Clock (TXC)

TXC is sourced by the PHY. It is a continuous clock that provides the timing reference for TXEN and TXD[3:0].

TXC is 2.5 MHz for 10 Mbps operation and 25 MHz for 100 Mbps operation.

### 3.2.1.2 Transmit Enable (TXEN)

TXEN indicates that the MAC is presenting nibbles on TXD[3:0] for transmission. It is asserted synchronously with the first nibble of the preamble and remains asserted while all nibbles to be transmitted are presented on the MII. It is negated before the first TXC following the final nibble of a frame.

TXEN transitions synchronously with respect to TXC.

### 3.2.1.3 Transmit Data[3:0] (TXD[3:0])

When TXEN is asserted, TXD[3:0] are the data nibbles accepted by the PHY for transmission. TXD[3:0] is 00 to indicate idle when TXEN is de-asserted.

TXD[3:0] transitions synchronously with respect to TXC.

### 3.2.1.4 Receive Clock (RXC)

RXC provides the timing reference for RXDV, RXD[3:0], and RXER.

In 10 Mbps mode, RXC is recovered from the line while the carrier is active. RXC is derived from the PHY's reference clock when the line is idle or the link is down.

In 100 Mbps mode, RXC is continuously recovered from the line. If the link is down, RXC is derived from the PHY's reference clock.

RXC is 2.5 MHz for 10 Mbps operation and 25 MHz for 100 Mbps operation.

### 3.2.1.5 Receive Data Valid (RXDV)

RXDV is driven by the PHY to indicate that the PHY is presenting recovered and decoded nibbles on RXD[3:0].

In 10 Mbps mode, RXDV is asserted with the first nibble of the start-of-frame delimiter (SFD), 5D, and remains asserted until the end of the frame.

In 100 Mbps mode, RXDV is asserted from the first nibble of the preamble to the last nibble of the frame.

RXDV transitions synchronously with respect to RXC.

### 3.2.1.6 Receive Data[3:0] (RXD[3:0])

RXD[3:0] transitions synchronously with respect to RXC. For each clock period in which RXDV is asserted, RXD[3:0] transfers a nibble of recovered data from the PHY.

### 3.2.1.7 Receive Error (RXER)

RXER is asserted for one or more RXC periods to indicate that a symbol error (for example, a coding error that a PHY can detect that may otherwise be undetectable by the MAC sub-layer) was detected somewhere in the frame being transferred from the PHY.

RXER transitions synchronously with respect to RXC.

### 3.2.1.8 Carrier Sense (CRS)

CRS is asserted and de-asserted as follows:

In 10 Mbps mode, CRS assertion is based on the reception of valid preambles. CRS de-assertion is based on the reception of an end-of-frame (EOF) marker.

In 100 Mbps mode, CRS is asserted when a start-of-stream delimiter or /J/K symbol pair is detected. CRS is de-asserted when an end-of-stream delimiter or /T/R symbol pair is detected. Additionally, the PMA layer de-asserts CRS if IDLE symbols are received without /T/R.

### 3.2.1.9 Collision Detection (COL)

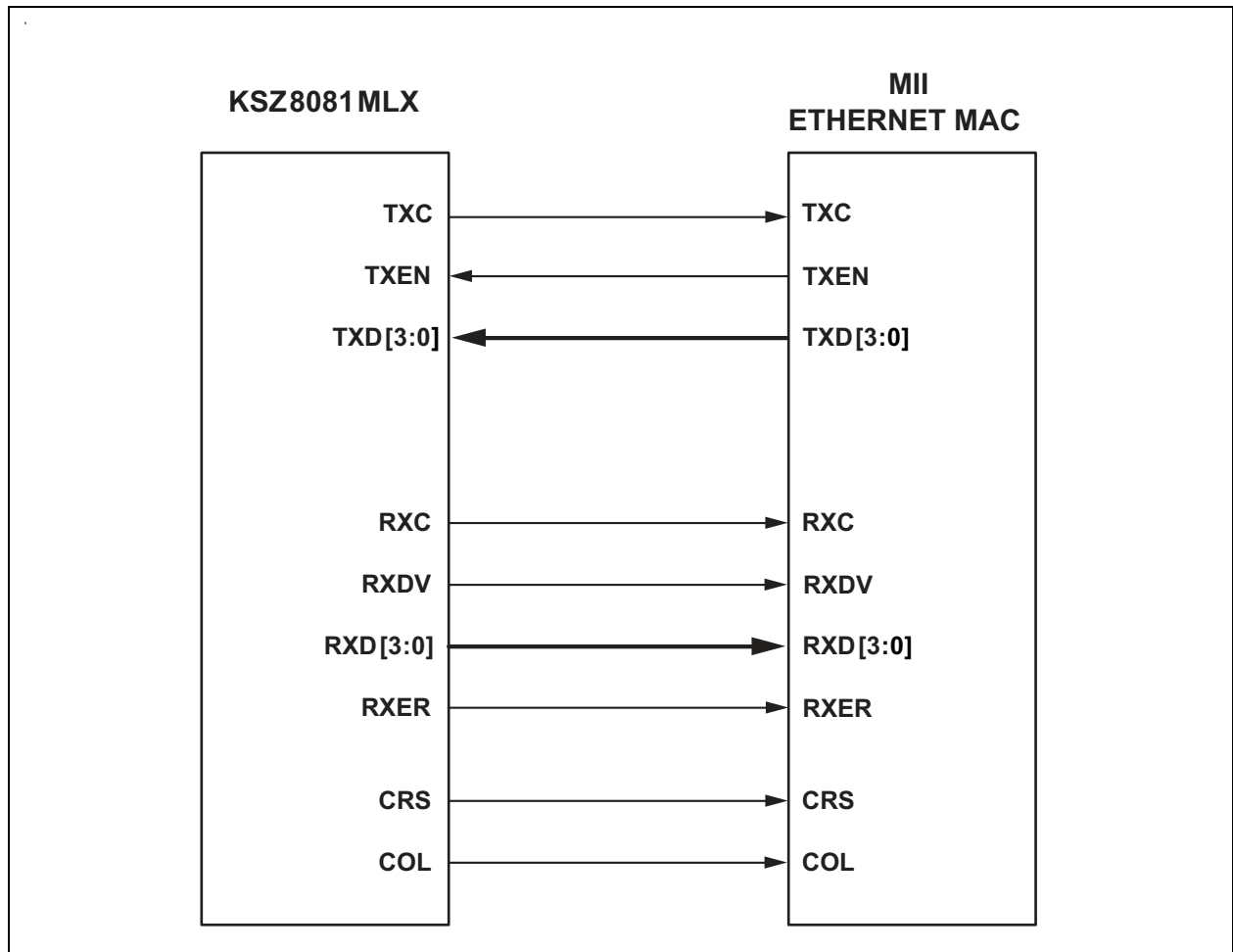
COL is asserted in half-duplex mode whenever the transmitter and receiver are simultaneously active on the line. This informs the MAC that a collision has occurred during its transmission to the PHY.

COL transitions asynchronously with respect to TXC and RXC.

## 3.2.2 MII SIGNAL DIAGRAM

The KSZ8081MLX MII pin connections to the MAC are shown in [Figure 3-2](#).

**FIGURE 3-2: KSZ8081MLX MII INTERFACE**

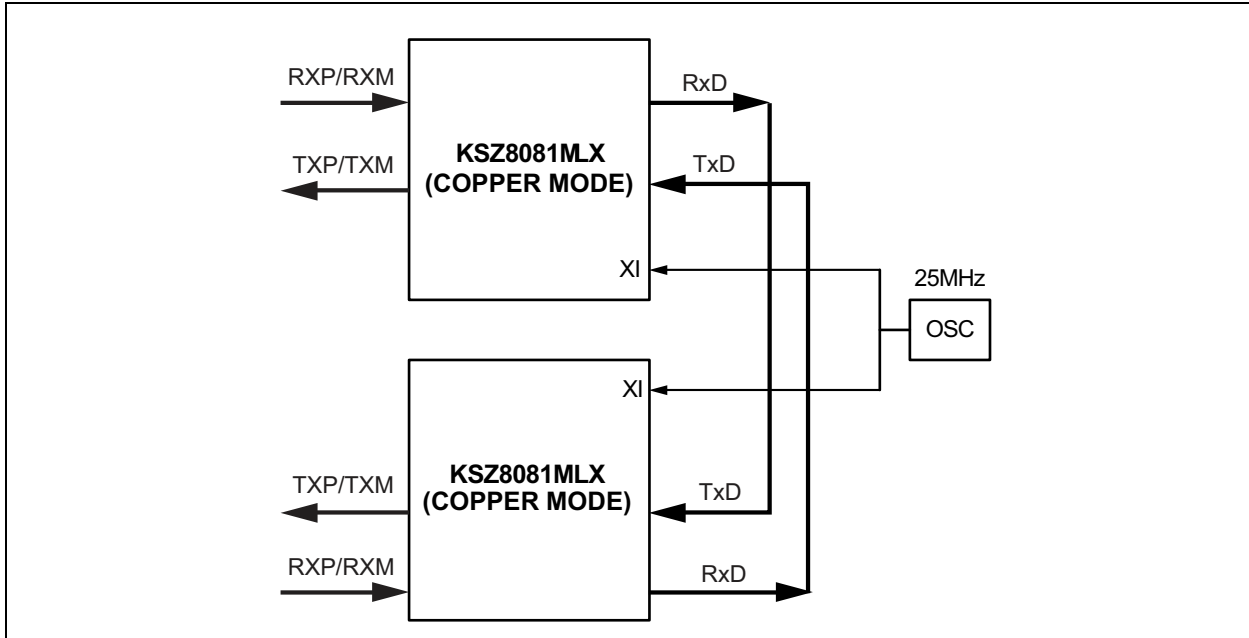


# KSZ8081MLX

## 3.3 Back-to-Back Mode – 100 Mbps Copper Repeater

Two KSZ8081MLX devices can be connected back-to-back to form a 100BASE-TX to 100BASE-TX copper repeater.

**FIGURE 3-3: KSZ8081MLX TO KSZ8081MLX BACK-TO-BACK COPPER REPEATER**



### 3.3.1 MII BACK-TO-BACK MODE

In MII back-to-back mode, a KSZ8081MLX interfaces with another KSZ8081MLX to provide a complete 100 Mbps copper repeater solution.

The KSZ8081MLX devices are configured to MII back-to-back mode after power-up or reset with the following:

- Strapping pin CONFIG[2:0] (Pins 27, 41, 40) set to 110.
- A common 25 MHz reference clock connected to XI (Pin 15) of both KSZ8081MLX devices.
- MII signals connected as shown in [Table 3-2](#).

**TABLE 3-2: MII SIGNAL CONNECTION FOR MII BACK-TO-BACK MODE (100BASE-TX COPPER REPEATER)**

| KSZ8081MLX (100BASE-TX Copper)<br>[Device 1] |            |          | KSZ8081MLX (100BASE-TX Copper)<br>[Device 2] |            |          |
|--|------------|----------|--|------------|----------|
| Pin Name                                     | Pin Number | Pin Type | Pin Name                                     | Pin Number | Pin Type |
| RXDV   | 27         | Output   | TXEN   | 34         | Input    |
| RXD3   | 20         | Output   | TXD3   | 39         | Input    |
| RXD2   | 21         | Output   | TXD2   | 38         | Input    |
| RXD1   | 22         | Output   | TXD1   | 36         | Input    |
| RXD0   | 23         | Output   | TXD0   | 35         | Input    |
| TXEN   | 34         | Input    | RXDV   | 27         | Output   |
| TXD3   | 39         | Input    | RXD3   | 20         | Output   |
| TXD2   | 38         | Input    | RXD2   | 21         | Output   |
| TXD1   | 36         | Input    | RXD1   | 22         | Output   |
| TXD0   | 35         | Input    | RXD0   | 23         | Output   |



## 3.4 MII Management (MIIM) Interface

The KSZ8081MLX supports the IEEE 802.3 MII management interface, also known as the Management Data Input/Output (MDIO) interface. This interface allows an upper-layer device, such as a MAC processor, to monitor and control the state of the KSZ8081MLX. An external device with MIIM capability is used to read the PHY status and/or configure the PHY settings. More details about the MIIM interface can be found in Clause 22.2.4 of the IEEE 802.3 Specification.

The MIIM interface consists of the following:

- A physical connection that incorporates the clock line (MDC) and the data line (MDIO).
- A specific protocol that operates across the physical connection mentioned earlier, which allows the external controller to communicate with one or more PHY devices.
- A set of 16-bit MDIO registers. Registers [0:8] are standard registers, and their functions are defined in the IEEE 802.3 Specification. The additional registers are provided for expanded functionality. See the Register Map section for details.

As the default, the KSZ8081MLX supports unique PHY addresses 1 to 7, and broadcast PHY address 0. The latter is defined in the IEEE 802.3 Specification, and can be used to read/write to a single KSZ8081MLX device, or write to multiple KSZ8081MLX devices simultaneously.

PHY address 0 can optionally be disabled as the broadcast address by either hardware pin strapping (B-CAST\_OFF, Pin 28) or software (Register 16h, Bit [9]), and assigned as a unique PHY address.

The PHYAD[2:0] strapping pins are used to assign a unique PHY address between 0 and 7 to each KSZ8081MLX device.

The MIIM interface can operate up to a maximum clock speed of 10 MHz MAC clock.

Table 3-3 shows the MII management frame format for the KSZ8081MLX.

**TABLE 3-3: MII MANAGEMENT FRAME FORMAT FOR THE KSZ8081MLX**

|       | Preamble | Start of Frame | Read/Write OP Code | PHY Address Bits[4:0] | REG Address Bits[4:0] | TA | Data Bits[15:0]   | Idle |
|-------|----------|----------------|--------------------|-----------------------|-----------------------|----|-------------------|------|
| Read  | 32 1's   | 01             | 10                 | 000AA                 | RRRRR                 | Z0 | DDDDDDDD_DDDDDDDD | Z    |
| Write | 32 1's   | 01             | 01                 | 000AA                 | RRRRR                 | 10 | DDDDDDDD_DDDDDDDD | Z    |

## 3.5 Interrupt (INTRP)

INTRP (Pin 32) is an optional interrupt signal that is used to inform the external controller that there has been a status update to the KSZ8081MLX PHY Register. Bits [15:8] of Register 1Bh are the interrupt control bits to enable and disable the conditions for asserting the INTRP signal. Bits [7:0] of Register 1Bh are the interrupt status bits to indicate which interrupt conditions have occurred. The interrupt status bits are cleared after reading Register 1Bh.

Bit [9] of Register 1Fh sets the interrupt level to active high or active low. The default is active low.

The MII management bus option gives the MAC processor complete access to the KSZ8081MLX control and status registers. Additionally, an interrupt pin eliminates the need for the processor to poll the PHY for status change.

## 3.6 HP Auto MDI/MDI-X

HP Auto MDI/MDI-X configuration eliminates the need to decide whether to use a straight cable or a crossover cable between the KSZ8081MLX and its link partner. This feature allows the KSZ8081MLX to use either type of cable to connect with a link partner that is in either MDI or MDI-X mode. The auto-sense function detects transmit and receive pairs from the link partner and assigns transmit and receive pairs of the KSZ8081MLX accordingly.

HP Auto MDI/MDI-X is enabled by default. It is disabled by writing a '1' to Register 1Fh, Bit [13]. MDI and MDI-X mode is selected by Register 1Fh, Bit [14] if HP Auto MDI/MDI-X is disabled.

An isolation transformer with symmetrical transmit and receive data paths is recommended to support Auto MDI/MDI-X.

Table 3-4 shows how the IEEE 802.3 Standard defines MDI and MDI-X.

# KSZ8081MLX

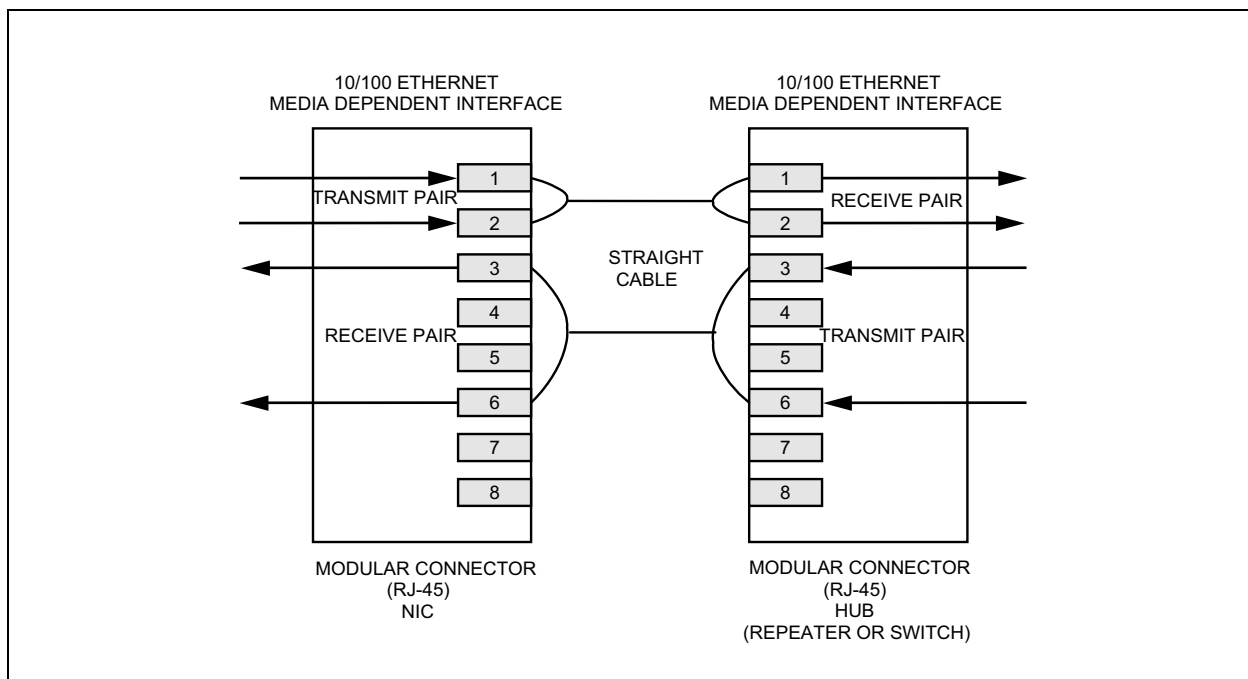
**TABLE 3-4: MDI/MDI-X PIN DESCRIPTION**

| MDI       |        | MDI-X     |        |
|-----------|--------|-----------|--------|
| RJ-45 Pin | Signal | RJ-45 Pin | Signal |
| 1         | TX+    | 1         | RX+    |
| 2         | TX-    | 2         | RX-    |
| 3         | RX+    | 3         | TX+    |
| 6         | RX-    | 6         | TX-    |

## 3.6.1 STRAIGHT CABLE

A straight cable connects an MDI device to an MDI-X device, or an MDI-X device to an MDI device. [Figure 3-4](#) shows a typical straight cable connection between a NIC card (MDI device) and a switch or hub (MDI-X device).

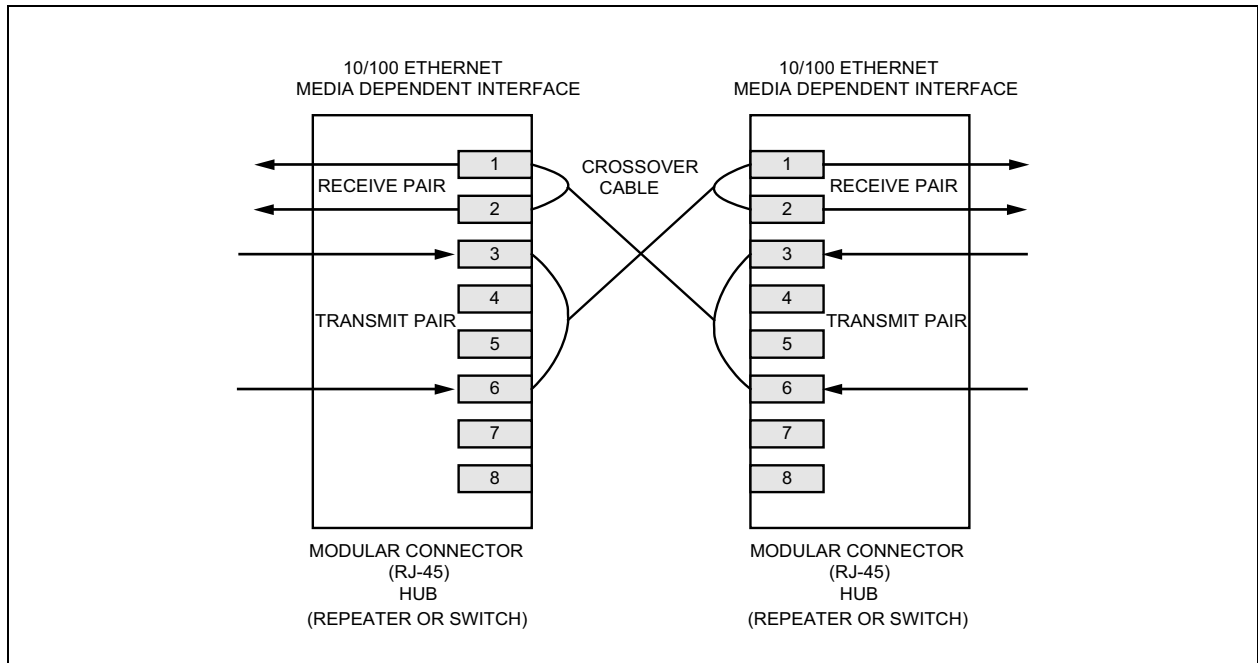
**FIGURE 3-4: TYPICAL STRAIGHT CABLE CONNECTION**



## 3.6.2 Crossover CABLE

A crossover cable connects an MDI device to another MDI device, or an MDI-X device to another MDI-X device. [Figure 3-5](#) shows a typical crossover cable connection between two switches or hubs (two MDI-X devices).

**FIGURE 3-5: TYPICAL CROSSOVER CABLE CONNECTION**



## 3.7 Loopback Mode

The KSZ8081MLX supports the following loopback operations to verify analog and/or digital data paths.

- Local (digital) loopback
- Remote (analog) loopback

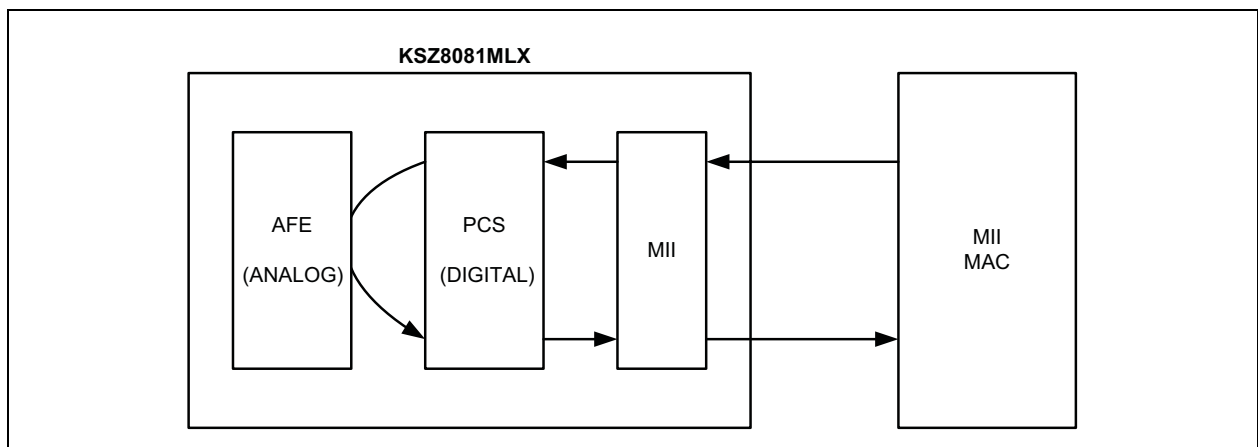
### 3.7.1 LOCAL (DIGITAL) LOOPBACK

This loopback mode checks the MII transmit and receive data paths between the KSZ8081MLX and the external MAC, and is supported for both speeds (10/100 Mbps) at full-duplex.

The loopback data path is shown in [Figure 3-6](#).

1. The MII MAC transmits frames to the KSZ8081MLX.
2. Frames are wrapped around inside the KSZ8081MLX.
3. The KSZ8081MLX transmits frames back to the MII MAC.

**FIGURE 3-6: LOCAL (DIGITAL) LOOPBACK**



# KSZ8081MLX

The following programming action and register settings are used for local loopback mode:

For 10/100 Mbps loopback:

Set Register 0h,

Bit [14] = 1 // Enable local loopback mode

Bit [13] = 0/1 // Select 10 Mbps/100 Mbps speed

Bit [12] = 0 // Disable auto-negotiation

Bit [8] = 1 // Select full-duplex mode

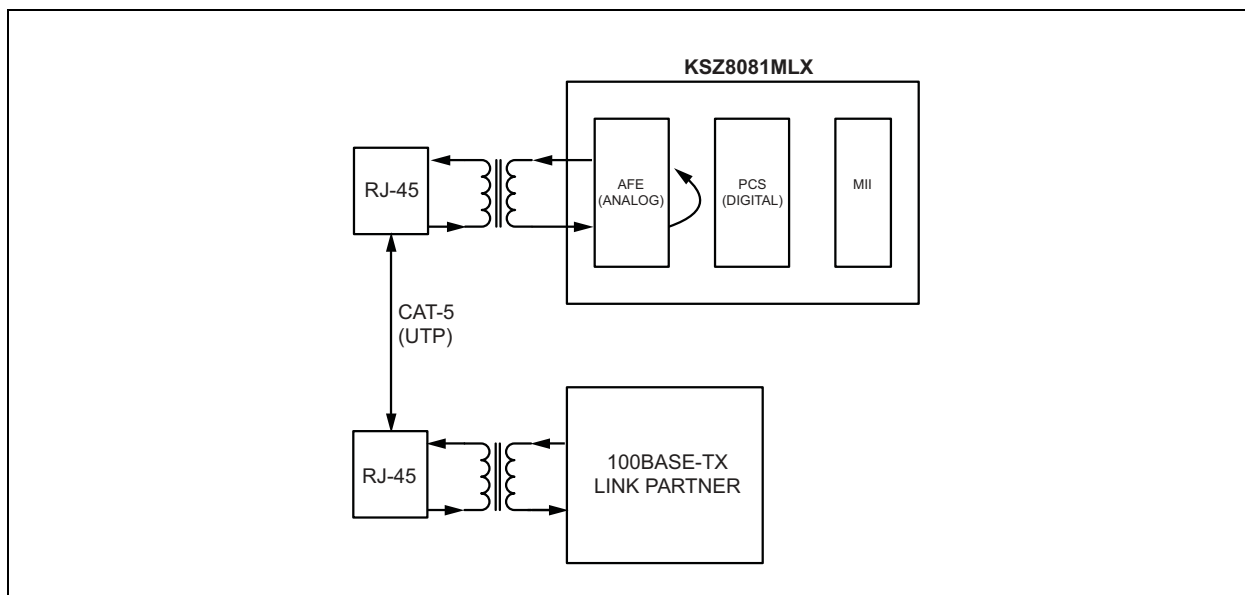
## 3.7.2 REMOTE (ANALOG) LOOPBACK

This loopback mode checks the line (differential pairs, transformer, RJ-45 connector, Ethernet cable) transmit and receive data paths between the KSZ8081MLX and its link partner, and is supported for 100BASE-TX full-duplex mode only.

The loopback data path is shown in [Figure 3-7](#).

1. The Fast Ethernet (100BASE-TX) PHY link partner transmits frames to the KSZ8081MLX.
2. Frames are wrapped around inside the KSZ8081MLX.
3. The KSZ8081MLX transmits frames back to the Fast Ethernet (100BASE-TX) PHY link partner.

**FIGURE 3-7: REMOTE (ANALOG) LOOPBACK**



The following programming steps and register settings are used for remote loopback mode:

1. Set Register 0h,

Bits [13] = 1 // Select 100 Mbps speed

Bit [12] = 0 // Disable auto-negotiation

Bit [8] = 1 // Select full-duplex mode

Or just auto-negotiate and link up at 100BASE-TX full-duplex mode with the link partner.

2. Set Register 1Fh,

Bit [2] = 1 // Enable remote loopback mode

## 3.8 LinkMD<sup>®</sup> Cable Diagnostic

The LinkMD function uses time-domain reflectometry (TDR) to analyze the cabling plant for common cabling problems. These include open circuits, short circuits, and impedance mismatches.

LinkMD works by sending a pulse of known amplitude and duration down the MDI or MDI-X pair, then analyzing the shape of the reflected signal to determine the type of fault. The time duration for the reflected signal to return provides the approximate distance to the cabling fault. The LinkMD function processes this TDR information and presents it as a numerical value that can be translated to a cable distance.

LinkMD is initiated by accessing Register 1Dh, the LinkMD Control/Status register, in conjunction with Register 1Fh, the PHY Control 2 register. The latter register is used to disable Auto MDI/MDI-X and to select either MDI or MDI-X as the cable differential pair for testing.

### 3.8.1 USAGE

The following is a sample procedure for using LinkMD with Registers 1Dh and 1Fh:

1. Disable auto MDI/MDI-X by writing a '1' to Register 1Fh, bit [13].
2. Start cable diagnostic test by writing a '1' to Register 1Dh, bit [15]. This enable bit is self-clearing.
3. Wait (poll) for Register 1Dh, bit [15] to return a '0', and indicating cable diagnostic test is completed.
4. Read cable diagnostic test results in Register 1Dh, bits [14:13]. The results are as follows:
  - 00 = normal condition (valid test)
  - 01 = open condition detected in cable (valid test)
  - 10 = short condition detected in cable (valid test)
  - 11 = cable diagnostic test failed (invalid test)

The '11' case, invalid test, occurs when the device is unable to shut down the link partner. In this instance, the test is not run because it would be impossible for the device to determine if the detected signal is a reflection of the signal generated or a signal from another source.

5. Get distance to fault by concatenating Register 1Dh, bits [8:0] and multiplying the result by a constant of 0.38. The distance to the cable fault can be determined by the following formula:

#### EQUATION 3-1:

$$D(\text{Distance to cable fault in meters}) = 0.38 \times (\text{Register 1Dh, bits}[8:0])$$

Concatenated value of Registers 1Dh bits [8:0] should be converted to decimal before multiplying by 0.38.

The constant (0.38) may be calibrated for different cabling conditions, including cables with a velocity of propagation that varies significantly from the norm.

## 3.9 NAND Tree Support

The KSZ8081MLX provides parametric NAND tree support for fault detection between chip I/Os and board. The NAND tree is a chain of nested NAND gates in which each KSZ8081MLX digital I/O (NAND tree input) pin is an input to one NAND gate along the chain. At the end of the chain, the CRS/CONFIG1 pin provides the output for the nested NAND gates.

The NAND tree test process includes:

- Enabling NAND tree mode
- Pulling all NAND tree input pins high
- Driving each NAND tree input pin low, sequentially, according to the NAND tree pin order
- Checking the NAND tree output to make sure there is a toggle high-to-low or low-to-high for each NAND tree input driven low

Table 3-5 lists the NAND tree pin order.

# KSZ8081MLX

**TABLE 3-5: NAND TREE TEST PIN ORDER FOR KSZ8081MLX**

| Pin Number | Pin Name | NAND Tree Description |
|------------|----------|-----------------------|
| 18         | MDIO     | Input                 |
| 19         | MDC      | Input                 |
| 20         | RXD3     | Input                 |
| 21         | RXD2     | Input                 |
| 22         | RXD1     | Input                 |
| 23         | RXD0     | Input                 |
| 27         | RXDV     | Input                 |
| 28         | RXC      | Input                 |
| 29         | RXER     | Input                 |
| 32         | INTRP    | Input                 |
| 33         | TXC      | Input                 |
| 34         | TXEN     | Input                 |
| 35         | TXD0     | Input                 |
| 36         | TXD1     | Input                 |
| 38         | TXD2     | Input                 |
| 39         | TXD3     | Input                 |
| 42         | LED0     | Input                 |
| 43         | LED1     | Input                 |
| 40         | COL      | Input                 |
| 41         | CRS      | Output                |

## 3.9.1 NAND TREE I/O TESTING

Use the following procedure to check for faults on the KSZ8081MLX digital I/O pin connections to the board:

1. Enable NAND tree mode using either a hardware strap-in pin (NAND\_Tree#, Pin 32) or software (Register 16h, Bit [5]). Pin 44 TEST/NC has to use a pull-up resistor for normal NAND tree testing.
2. Use board logic to drive all KSZ8081MLX NAND tree input pins high.
3. Use board logic to drive each NAND tree input pin, in KSZ8081MLX NAND tree pin order, as follows:
  - a) Toggle the first pin (MDIO) from high to low, and verify that the CRS/CONFIG1 pin switches from high to low to indicate that the first pin is connected properly.
  - b) Leave the first pin (MDIO) low.
  - c) Toggle the second pin (MDC) from high to low, and verify that the CRS/CONFIG1 pin switches from low to high to indicate that the second pin is connected properly.
  - d) Leave the first pin (MDIO) and the second pin (MDC) low.
  - e) Toggle the third pin from high to low, and verify that the CRS/CONFIG1 pin switches from high-to-low to indicate that the third pin is connected properly.
  - f) Continue with this sequence until all KSZ8081MLX NAND tree input pins have been toggled.

Each KSZ8081MLX NAND tree input pin must cause the CRS/CONFIG1 output pin to toggle high-to-low or low-to-high to indicate a good connection. If the CRS pin fails to toggle when the KSZ8081MLX input pin toggles from high to low, the input pin has a fault.

## 3.10 Power Management

The KSZ8081MLX incorporates a number of power-management modes and features that provide methods to consume less energy. These are discussed in the following sections.

### 3.10.1 POWER-SAVING MODE

Power-saving mode is used to reduce the transceiver power consumption when the cable is unplugged. It is enabled by writing a '1' to Register 1Fh, Bit [10], and is in effect when auto-negotiation mode is enabled and the cable is disconnected (no link).

In this mode, the KSZ8081MLX shuts down all transceiver blocks, except for the transmitter, energy detect, and PLL circuits.

By default, power-saving mode is disabled after power-up.

### 3.10.2 ENERGY-DETECT POWER-DOWN MODE

Energy-detect power-down (EDPD) mode is used to further reduce transceiver power consumption when the cable is unplugged. It is enabled by writing a '0' to Register 18h, Bit [11], and is in effect when auto-negotiation mode is enabled and the cable is disconnected (no link).

EDPD mode works with the PLL off (set by writing a '1' to Register 10h, Bit [4] to automatically turn the PLL off in EDPD mode) to turn off all KSZ8081MLX transceiver blocks, except for the transmitter and energy-detect circuits.

Power can be reduced further by extending the time interval between transmissions of link pulses to check for the presence of a link partner. The periodic transmission of link pulses is needed to ensure two link partners in the same low-power state, with Auto MDI/MDI-X disabled, can wake up when the cable is connected between them.

By default, energy-detect power-down mode is disabled after power-up.

### 3.10.3 POWER-DOWN MODE

Power-down mode is used to power down the KSZ8081MLX device when it is not in use after power-up. It is enabled by writing a '1' to Register 0h, Bit [11].

In this mode, the KSZ8081MLX disables all internal functions except the MII management interface. The KSZ8081MLX exits (disables) power-down mode after Register 0h, Bit [11] is set back to '0'.

### 3.10.4 SLOW-OSCILLATOR MODE

Slow-oscillator mode is used to disconnect the input reference crystal/clock on XI (Pin 15) and select the on-chip slow oscillator when the KSZ8081MLX device is not in use after power-up. It is enabled by writing a '1' to Register 11h, Bit [5].

Slow-oscillator mode works in conjunction with power-down mode to put the KSZ8081MLX device in the lowest power state with all internal functions disabled except the MII management interface. To properly exit this mode and return to normal PHY operation, use the following programming sequence:

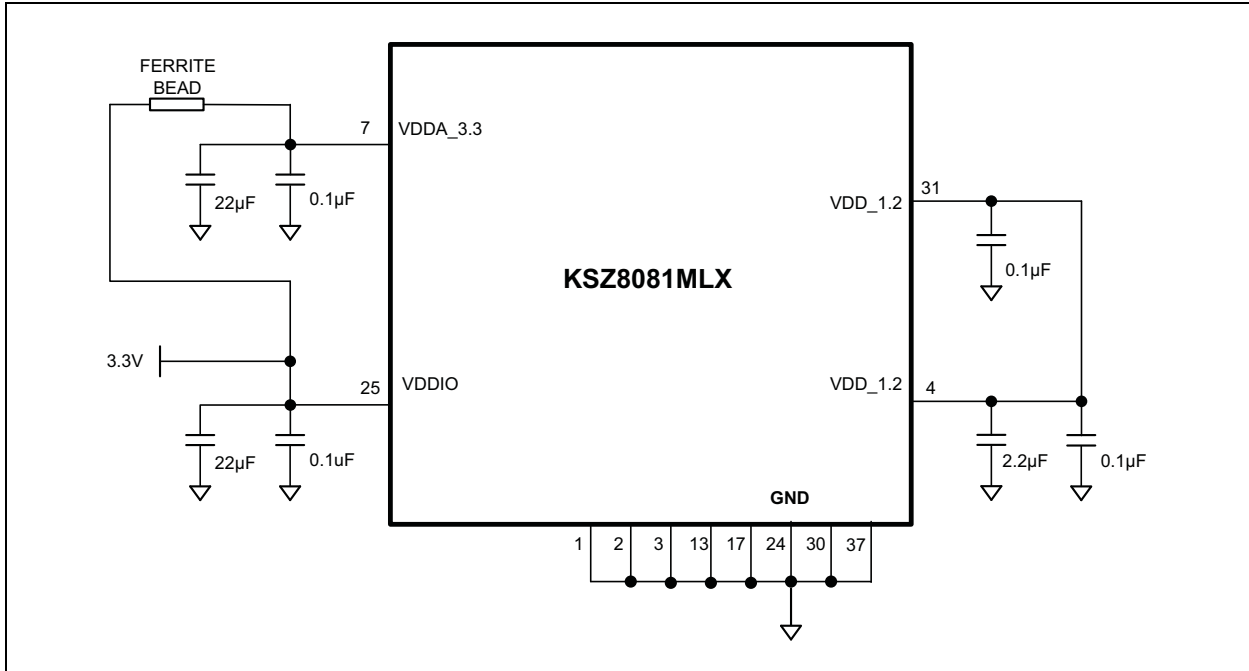
1. Disable slow-oscillator mode by writing a '0' to Register 11h, Bit [5].
2. Disable power-down mode by writing a '0' to Register 0h, Bit [11].
3. Initiate software reset by writing a '1' to Register 0h, Bit [15].

# KSZ8081MLX

## 3.11 Reference Circuit for Power and Ground Connections

The KSZ8081MLX is a single 3.3V supply device with a built-in regulator to supply the 1.2V core. The power and ground connections are shown in [Figure 3-8](#) and [Table 3-6](#) for 3.3V  $V_{DDIO}$ .

**FIGURE 3-8: KSZ8081MLX POWER AND GROUND CONNECTIONS**



**TABLE 3-6: KSZ8081MLX POWER PIN DESCRIPTION**

| Power Pin | Pin Number | Description  |
|-----------|------------|--|
| VDD_1.2   | 4          | Connect with Pin 31 by power trace or plane.<br>Decouple with 2.2 $\mu$ F and 0.1 $\mu$ F capacitors to ground.          |
| VDDA_3.3  | 7          | Connect to board's 3.3V supply through a ferrite bead.<br>Decouple with 22 $\mu$ F and 0.1 $\mu$ F capacitors to ground. |
| VDDIO     | 25         | Connect to board's 3.3V supply for 3.3V $V_{DDIO}$ .<br>Decouple with 22 $\mu$ F and 0.1 $\mu$ F capacitors to ground.   |
| VDD_1.2   | 31         | Connect with Pin 4 by power trace or plane.<br>Decouple with 0.1 $\mu$ F capacitor to ground.                            |

## 3.12 Typical Current/Power Consumption

[Table 3-7](#), [Table 3-8](#), and [Table 3-9](#) show typical values for current consumption by the transceiver ( $V_{DDA\_3.3}$ ) and digital I/O ( $V_{DDIO}$ ) power pins and typical values for power consumption by the KSZ8081MLX device for the indicated nominal operating voltages. These current and power consumption values include the transmit driver current and on-chip regulator current for the 1.2V core.

**TABLE 3-7: TYPICAL CURRENT/POWER CONSUMPTION ( $V_{DDA\_3.3} = 3.3V$ ,  $V_{DDIO} = 3.3V$ )**

| Condition                                 | 3.3V Transceiver ( $V_{DDA\_3.3}$ ) | 3.3V Digital I/Os ( $V_{DDIO}$ ) | Total Chip Power |
|---|-------------------------------------|----------------------------------|------------------|
| 100BASE-TX Link-up (no traffic)           | 34 mA                               | 12 mA                            | 152 mW           |
| 100BASE-TX Full-duplex @ 100% utilization | 34 mA                               | 13 mA                            | 155 mW           |
| 10BASE-T Link-up (no traffic)             | 14 mA                               | 11 mA                            | 82.5 mW          |
| 10BASE-T Full-duplex @ 100% utilization   | 30 mA                               | 11 mA                            | 135 mW           |



**TABLE 3-7: TYPICAL CURRENT/POWER CONSUMPTION (VDDA\_3.3 = 3.3V, VDDIO = 3.3V)**

| Condition   | 3.3V Transceiver (VDDA_3.3) | 3.3V Digital I/Os (VDDIO) | Total Chip Power |
|---|-----------------------------|---------------------------|------------------|
| Power-saving mode (Reg. 1Fh, Bit [10] = 1)  | 14 mA                       | 10 mA                     | 79.2 mW          |
| EDPD mode (Reg. 18h, Bit [11] = 0)  | 10 mA                       | 10 mA                     | 66 mW            |
| EDPD mode (Reg. 18h, Bit [11] = 0) and PLL off (Reg. 10h, Bit [4] = 1)                            | 3.77 mA                     | 1.54 mA                   | 1.75 mW          |
| Software power-down mode (Reg. 0h, Bit [11] = 1)  | 2.59 mA                     | 1.51 mA                   | 13.5 mW          |
| Software power-down mode (Reg. 0h, Bit [11] = 1) and slow-oscillator mode (Reg. 11h, Bit [5] = 1) | 1.36 mA                     | 0.45 mA                   | 5.97 mW          |

**TABLE 3-8: TYPICAL CURRENT/POWER CONSUMPTION (VDDA\_3.3 = 3.3V, VDDIO = 2.5V)**

| Condition   | 3.3V Transceiver (VDDA_3.3) | 2.5V Digital I/Os (VDDIO) | Total Chip Power |
|---|-----------------------------|---------------------------|------------------|
| 100BASE-TX Link-up (no traffic)   | 34 mA                       | 11 mA                     | 140 mW           |
| 100BASE-TX Full-duplex @ 100% utilization   | 34 mA                       | 12 mA                     | 142 mW           |
| 10BASE-T Link-up (no traffic)   | 15 mA                       | 10 mA                     | 74.5 mW          |
| 10BASE-T Full-duplex @ 100% utilization   | 27 mA                       | 10 mA                     | 114 mW           |
| Power-saving mode (Reg. 1Fh, Bit [10] = 1)  | 15 mA                       | 10 mA                     | 74.5 mW          |
| EDPD mode (Reg. 18h, Bit [11] = 0)  | 11 mA                       | 10 mA                     | 61.3 mW          |
| EDPD mode (Reg. 18h, Bit [11] = 0) and PLL off (Reg. 10h, Bit [4] = 1)                            | 3.55 mA                     | 1.35 mA                   | 15.1 mW          |
| Software power-down mode (Reg. 0h, Bit [11] = 1)  | 2.29 mA                     | 1.34 mA                   | 10.9 mW          |
| Software power-down mode (Reg. 0h, Bit [11] = 1) and slow-oscillator mode (Reg. 11h, Bit [5] = 1) | 1.15 mA                     | 0.29 mA                   | 4.52 mW          |

**TABLE 3-9: TYPICAL CURRENT/POWER CONSUMPTION (VDDA\_3.3 = 3.3V, VDDIO = 1.8V)**

| Condition   | 3.3V Transceiver (VDDA_3.3) | 1.8V Digital I/Os (VDDIO) | Total Chip Power |
|---|-----------------------------|---------------------------|------------------|
| 100BASE-TX Link-up (no traffic)   | 34 mA                       | 11 mA                     | 132 mW           |
| 100BASE-TX Full-duplex @ 100% utilization   | 34 mA                       | 12 mA                     | 134 mW           |
| 10BASE-T Link-up (no traffic)   | 15 mA                       | 9 mA                      | 65.7 mW          |
| 10BASE-T Full-duplex @ 100% utilization   | 27 mA                       | 9 mA                      | 105 mW           |
| Power-saving mode (Reg. 1Fh, Bit [10] = 1)  | 15 mA                       | 9 mA                      | 65.7 mW          |
| EDPD mode (Reg. 18h, Bit [11] = 0)  | 11 mA                       | 9 mA                      | 52.5 mW          |
| EDPD mode (Reg. 18h, Bit [11] = 0) and PLL off (Reg. 10h, Bit [4] = 1)                            | 4.05 mA                     | 1.21 mA                   | 15.5 mW          |
| Software power-down mode (Reg. 0h, Bit [11] = 1)  | 2.79 mA                     | 1.21 mA                   | 11.4 mW          |
| Software power-down mode (Reg. 0h, Bit [11] = 1) and slow-oscillator mode (Reg. 11h, Bit [5] = 1) | 1.65 mA                     | 0.19 mA                   | 5.79 mW          |

# KSZ8081MLX

## 4.0 REGISTER DESCRIPTIONS

This chapter describes the various control and status registers (CSRs).

### 4.1 Register Map

TABLE 4-1: REGISTERS SUPPORTED BY KSZ8081MLX

| Register Number (hex) | Description                           |
|-----------------------|---------------------------------------|
| 0h                    | Basic Control                         |
| 1h                    | Basic Status                          |
| 2h                    | PHY Identifier 1                      |
| 3h                    | PHY Identifier 2                      |
| 4h                    | Auto-Negotiation Advertisement        |
| 5h                    | Auto-Negotiation Link Partner Ability |
| 6h                    | Auto-Negotiation Expansion            |
| 7h                    | Auto-Negotiation Next Page            |
| 8h                    | Link Partner Next Page Ability        |
| 9h                    | Reserved                              |
| 10h                   | Digital Reserved Control              |
| 11h                   | AFE Control 1                         |
| 12h - 14h             | Reserved                              |
| 15h                   | RXER Counter                          |
| 16h                   | Operation Mode Strap Override         |
| 17h                   | Operation Mode Strap Status           |
| 18h                   | Expanded Control                      |
| 19h - 1Ah             | Reserved                              |
| 1Bh                   | Interrupt Control/Status              |
| 1Ch                   | Reserved                              |
| 1Dh                   | LinkMD Control/Status                 |
| 1Eh                   | PHY Control 1                         |
| 1Fh                   | PHY Control 2                         |

### 4.2 Register Descriptions

TABLE 4-2: REGISTER DESCRIPTIONS

| Address                            | Name         | Description  | Mode<br><a href="#">Note 4-1</a> | Default   |
|------------------------------------|--------------|--|----------------------------------|---|
| <b>Register 0h – Basic Control</b> |              |  |                                  |   |
| 0.15                               | Reset        | 1 = Software reset<br>0 = Normal operation<br>This bit is self-cleared after a '1' is written to it.   | RW/SC                            | 0   |
| 0.14                               | Loopback     | 1 = Loopback mode<br>0 = Normal operation  | RW                               | 0   |
| 0.13                               | Speed Select | 1 = 100 Mbps<br>0 = 10 Mbps<br>This bit is ignored if auto-negotiation is enabled (Register 0.12 = 1). | RW                               | Set by the SPEED strapping pin. See the <a href="#">Strap-In Options</a> section for details. |

**TABLE 4-2: REGISTER DESCRIPTIONS (CONTINUED)**

| Address                           | Name                      | Description   | Mode<br>Note 4-1 | Default   |
|-----------------------------------|---------------------------|---|------------------|---|
| 0.12                              | Auto-Negotiation Enable   | 1 = Enable auto-negotiation process<br>0 = Disable auto-negotiation process<br>If enabled, the auto-negotiation result overrides the settings in Registers 0.13 and 0.8.  | RW               | Set by the NWAYEN strapping pin.<br>See the <a href="#">Strap-In Options</a> section for details.               |
| 0.11                              | Power-Down                | 1 = Power-down mode<br>0 = Normal operation<br>If software reset (Register 0.15) is used to exit power-down mode (Register 0.11 = 1), two software reset writes (Register 0.15 = 1) are required. The first write clears power-down mode; the second write resets the chip and re-latches the pin strapping pin values. | RW               | 0   |
| 0.10                              | Isolate                   | 1 = Electrical isolation of PHY from MII<br>0 = Normal operation  | RW               | Set by the ISO strapping pin.<br>See the <a href="#">Strap-In Options</a> section for details.                  |
| 0.9                               | Restart Auto-Negotiation  | 1 = Restart auto-negotiation process<br>0 = Normal operation.<br>This bit is self-cleared after a '1' is written to it.   | RW/SC            | 0   |
| 0.8                               | Duplex Mode               | 1 = Full-duplex<br>0 = Half-duplex  | RW               | The inverse of the DUPLEX strapping pin value.<br>See the <a href="#">Strap-In Options</a> section for details. |
| 0.7                               | Collision Test            | 1 = Enable COL test<br>0 = Disable COL test   | RW               | 0   |
| 0.6:0                             | Reserved                  | Reserved  | RO               | 000_0000  |
| <b>Register 1h - Basic Status</b> |                           |   |                  |   |
| 1.15                              | 100BASE-T4                | 1 = T4 capable<br>0 = Not T4 capable  | RO               | 0   |
| 1.14                              | 100BASE-TX Full-Duplex    | 1 = Capable of 100 Mbps full-duplex<br>0 = Not capable of 100 Mbps full-duplex  | RO               | 1   |
| 1.13                              | 100BASE-TX Half-Duplex    | 1 = Capable of 100 Mbps half-duplex<br>0 = Not capable of 100 Mbps half-duplex  | RO               | 1   |
| 1.12                              | 10BASE-T Full-Duplex      | 1 = Capable of 10 Mbps full-duplex<br>0 = Not capable of 10 Mbps full-duplex  | RO               | 1   |
| 1.11                              | 10BASE-T Half-Duplex      | 1 = Capable of 10 Mbps half-duplex<br>0 = Not capable of 10 Mbps half-duplex  | RO               | 1   |
| 1.10:7                            | Reserved                  | Reserved  | RO               | 000_0   |
| 1.6                               | No Preamble               | 1 = Preamble suppression<br>0 = Normal preamble   | RO               | 1   |
| 1.5                               | Auto-Negotiation Complete | 1 = Auto-negotiation process completed<br>0 = Auto-negotiation process not completed  | RO               | 0   |
| 1.4                               | Remote Fault              | 1 = Remote fault<br>0 = No remote fault   | RO/LH            | 0   |
| 1.3                               | Auto-Negotiation Ability  | 1 = Can perform auto-negotiation<br>0 = Cannot perform auto-negotiation   | RO               | 1   |

# KSZ8081MLX

**TABLE 4-2: REGISTER DESCRIPTIONS (CONTINUED)**

| Address   | Name                   | Description   | Mode<br>Note 4-1 | Default   |
|---|------------------------|---|------------------|---|
| 1.2   | Link Status            | 1 = Link is up<br>0 = Link is down  | RO/LL            | 0   |
| 1.1   | Jabber Detect          | 1 = Jabber detected<br>0 = Jabber not detected (default is low)   | RO/LH            | 0   |
| 1.0   | Extended Capability    | 1 = Supports extended capability registers  | RO               | 1   |
| <b>Register 2h - PHY Identifier 1</b>               |                        |   |                  |   |
| 2.15:0  | PHY ID Number          | Assigned to the 3rd through 18th bits of the Organizationally Unique Identifier (OUI). KENDIN Communication's OUI is 0010A1 (hex).  | RO               | 0022h   |
| <b>Register 3h - PHY Identifier 2</b>               |                        |   |                  |   |
| 3.15:10   | PHY ID Number          | Assigned to the 19th through 24th bits of the Organizationally Unique Identifier (OUI). KENDIN Communication's OUI is 0010A1 (hex). | RO               | 0001_01   |
| 3.9:4   | Model Number           | Six-bit manufacturer's model number   | RO               | 01_0110   |
| 3.3:0   | Revision Number        | Four-bit manufacturer's revision number   | RO               | Indicates silicon revision.   |
| <b>Register 4h - Auto-Negotiation Advertisement</b> |                        |   |                  |   |
| 4.15  | Next Page              | 1 = Next page capable<br>0 = No next page capability<br>Note: Recommend to set this bit to '0'.                                     | RW               | 1   |
| 4.14  | Reserved               | Reserved  | RO               | 0   |
| 4.13  | Remote Fault           | 1 = Remote fault supported<br>0 = No remote fault   | RW               | 0   |
| 4.12  | Reserved               | Reserved  | RO               | 0   |
| 4.11:10   | Pause                  | [00] = No pause<br>[10] = Asymmetric pause<br>[01] = Symmetric pause<br>[11] = Asymmetric and symmetric pause                       | RW               | 00  |
| 4.9   | 100BASE-T4             | 1 = T4 capable<br>0 = No T4 capability  | RO               | 0   |
| 4.8   | 100BASE-TX Full-Duplex | 1 = 100 Mbps full-duplex capable<br>0 = No 100 Mbps full-duplex capability  | RW               | Set by the SPEED strapping pin. See the <a href="#">Strap-In Options</a> section for details. |
| 4.7   | 100BASE-TX Half-Duplex | 1 = 100 Mbps half-duplex capable<br>0 = No 100 Mbps half-duplex capability  | RW               | Set by the SPEED strapping pin. See the <a href="#">Strap-In Options</a> section for details. |
| 4.6   | 10BASE-T Full-Duplex   | 1 = 10 Mbps full-duplex capable<br>0 = No 10 Mbps full-duplex capability  | RW               | 1   |
| 4.5   | 10BASE-T Half-Duplex   | 1 = 10 Mbps half-duplex capable<br>0 = No 10 Mbps half-duplex capability  | RW               | 1   |
| 4.4:0   | Selector Field         | [00001] = IEEE 802.3  | RW               | 0_0001  |

**TABLE 4-2: REGISTER DESCRIPTIONS (CONTINUED)**

| Address  | Name                                       | Description  | Mode<br>Note 4-1 | Default       |
|--|--|--|------------------|---------------|
| <b>Register 5h - Auto-Negotiation Link Partner Ability</b> |  |  |                  |               |
| 5.15   | Next Page                                  | 1 = Next page capable<br>0 = No next page capability   | RO               | 0             |
| 5.14   | Acknowledge                                | 1 = Link code word received from partner<br>0 = Link code word not yet received                                | RO               | 0             |
| 5.13   | Remote Fault                               | 1 = Remote fault detected<br>0 = No remote fault   | RO               | 0             |
| 5.12   | Reserved                                   | Reserved   | RO               | 0             |
| 5.11:10  | Pause                                      | [00] = No pause<br>[10] = Asymmetric pause<br>[01] = Symmetric pause<br>[11] = Asymmetric and symmetric pause  | RO               | 00            |
| 5.9  | 100BASE-T4                                 | 1 = T4 capable<br>0 = No T4 capability   | RO               | 0             |
| 5.8  | 100BASE-TX<br>Full-Duplex                  | 1 = 100 Mbps full-duplex capable<br>0 = No 100 Mbps full-duplex capability                                     | RO               | 0             |
| 5.7  | 100BASE-TX<br>Half-Duplex                  | 1 = 100 Mbps half-duplex capable<br>0 = No 100 Mbps half-duplex capability                                     | RO               | 0             |
| 5.6  | 10BASE-T<br>Full-Duplex                    | 1 = 10 Mbps full-duplex capable<br>0 = No 10 Mbps full-duplex capability                                       | RO               | 0             |
| 5.5  | 10BASE-T<br>Half-Duplex                    | 1 = 10 Mbps half-duplex capable<br>0 = No 10 Mbps half-duplex capability                                       | RO               | 0             |
| 5.4:0  | Selector<br>Field                          | [00001] = IEEE 802.3   | RO               | 0_0000        |
| <b>Register 6h - Auto-Negotiation Expansion</b>            |  |  |                  |               |
| 6.15:5   | Reserved                                   | Reserved   | RO               | 0000_0000_000 |
| 6.4  | Parallel<br>Detection<br>Fault             | 1 = Fault detected by parallel detection<br>0 = No fault detected by parallel detection                        | RO/LH            | 0             |
| 6.3  | Link Partner<br>Next Page<br>Able          | 1 = Link partner has next page capability<br>0 = Link partner does not have next page capability               | RO               | 0             |
| 6.2  | Next Page<br>Able                          | 1 = Local device has next page capability<br>0 = Local device does not have next page capability               | RO               | 1             |
| 6.1  | Page<br>Received                           | 1 = New page received<br>0 = New page not received yet   | RO/LH            | 0             |
| 6.0  | Link Partner<br>Auto-Negoti-<br>ation Able | 1 = Link partner has auto-negotiation capability<br>0 = Link partner does not have auto-negotiation capability | RO               | 0             |
| <b>Register 7h - Auto-Negotiation Next Page</b>            |  |  |                  |               |
| 7.15   | Reserved                                   | Reserved   | RO               | 0             |
| 7.14   | Reserved                                   | Reserved   | RO               | 0             |
| 7.13   | Message<br>Page                            | 1 = Message page<br>0 = Unformatted page   | RW               | 1             |
| 7.12   | Acknowl-<br>edge2                          | 1 = Will comply with message<br>0 = Cannot comply with message   | RW               | 0             |

# KSZ8081MLX

**TABLE 4-2: REGISTER DESCRIPTIONS (CONTINUED)**

| Address   | Name                        | Description   | Mode<br>Note 4-1 | Default  |
|---|-----------------------------|---|------------------|--|
| 7.11  | Toggle                      | 1 = Previous value of the transmitted link code word equaled logic 1<br>0 = Logic 0   | RO               | 0  |
| 7.10:0  | Message Field               | 11-bit wide field to encode 2048 messages   | RW               | 000_0000_0001  |
| <b>Register 8h - Link Partner Next Page Ability</b> |                             |   |                  |  |
| 8.15  | Next Page                   | 1 = Additional next pages will follow<br>0 = Last page  | RO               | 0  |
| 8.14  | Acknowledge                 | 1 = Successful receipt of link word<br>0 = No successful receipt of link word   | RO               | 0  |
| 8.13  | Message Page                | 1 = Message page<br>0 = Unformatted page  | RO               | 0  |
| 8.12  | Acknowledge2                | 1 = Can act on the information<br>0 = Cannot act on the information   | RO               | 0  |
| 8.11  | Toggle                      | 1 = Previous value of transmitted link code word equal to logic 0<br>0 = Previous value of transmitted link code word equal to logic 1  | RO               | 0  |
| 8.10:0  | Message Field               | 11-bit wide field to encode 2048 messages   | RO               | 000_0000_0000  |
| <b>Register 10h – Digital Reserved Control</b>      |                             |   |                  |  |
| 10.15:5   | Reserved                    | Reserved  | RW               | 0000_0000_000  |
| 10.4  | PLL Off                     | 1 = Turn PLL off automatically in EDPD mode<br>0 = Keep PLL on in EDPD mode.<br>See also Register 18h, Bit [11] for EDPD mode   | RW               | 0  |
| 10.3:0  | Reserved                    | Reserved  | RW               | 0000   |
| <b>Register 11h – AFE Control 1</b>                 |                             |   |                  |  |
| 11.15:6   | Reserved                    | Reserved  | RW               | 0000_0000_00   |
| 11.5  | Slow-Oscillator Mode Enable | Slow-oscillator mode is used to disconnect the input reference crystal/clock on the XI pin and select the on-chip slow oscillator when the KSZ8081MLX device is not in use after power-up.<br>1 = Enable<br>0 = Disable<br>This bit automatically sets software power-down to the analog side when enabled. | RW               | 0  |
| 11.4:0  | Reserved                    | Reserved  | RW               | 0_0000   |
| <b>Register 15h – RXER Counter</b>                  |                             |   |                  |  |
| 15.15:0   | RXER Counter                | Receive error counter for symbol error frames   | RO/SC            | 0000h  |
| <b>Register 16h – Operation Mode Strap Override</b> |                             |   |                  |  |
| 16.15   | Reserved Factory Mode       | 0 = Normal operation<br>1 = Factory test mode<br>If TXC (Pin 33) latches in a pull-up value at the de-assertion of reset, write a '0' to this bit to clear Reserved Factory Mode.   | RW               | 0<br>Set by the pull-up / pull-down value of TXC (Pin 33). |
| 16.14:11  | Reserved                    | Reserved  | RW               | 000_0  |
| 16.10   | Reserved                    | Reserved  | RO               | 0  |

**TABLE 4-2: REGISTER DESCRIPTIONS (CONTINUED)**

| Address   | Name                       | Description  | Mode<br>Note 4-1 | Default |
|---|----------------------------|--|------------------|---------|
| 16.9  | B-CAST_OFF Override        | 1 = Override strap-in for B-CAST_OFF<br>If bit is '1', PHY Address 0 is non-broadcast.   | RW               | 0       |
| 16.8  | Reserved                   | Reserved   | RW               | 0_0     |
| 16.7  | MII B-to-B Override        | 1 = Override strap-in for MII back-to-back mode<br>(also set Bit 1 of this register to '1')  | RW               | 0       |
| 16.6  | Reserved                   | Reserved   | RW               | 0       |
| 16.5  | NAND Tree Override         | 1 = Override strap-in for NAND tree mode   | RW               | 0       |
| 16.4:1  | Reserved                   | Reserved   | RW               | 0_000   |
| 16.0  | MII Override               | 1 = Override strap-in for MII mode   | RW               | 1       |
| <b>Register 17h - Operation Mode Strap Status</b> |                            |  |                  |         |
| 17.15:13  | PHYAD[2:0] Strap-In Status | [000] = Strap to PHY Address 0<br>[001] = Strap to PHY Address 1<br>[010] = Strap to PHY Address 2<br>[011] = Strap to PHY Address 3<br>[100] = Strap to PHY Address 4<br>[101] = Strap to PHY Address 5<br>[110] = Strap to PHY Address 6<br>[111] = Strap to PHY Address 7 | RO               | —       |
| 17.12:10  | Reserved                   | Reserved   | RO               | —       |
| 17.9  | B-CAST_OFF Strap-In Status | 1 = Strap to B-CAST_OFF<br>If bit is '1', PHY Address 0 is non-broadcast.  | RO               | —       |
| 17.8  | Reserved                   | Reserved   | RO               | —       |
| 17.7  | MII B-to-B Strap-In Status | 1 = Strap to MII back-to-back mode   | RO               | —       |
| 17.6  | Reserved                   | Reserved   | RO               | —       |
| 17.5  | NAND Tree Strap-In Status  | 1 = Strap to NAND tree mode  | RO               | —       |
| 17.4:1  | Reserved                   | Reserved   | RO               | —       |
| 17.0  | MII Strap-In Status        | 1 = Strap to MII mode  | RO               | —       |
| <b>Register 18h - Expanded Control</b>            |                            |  |                  |         |
| 18.15:12  | Reserved                   | Reserved   | RW               | 0000    |
| 18.11   | EDPD Disabled              | Energy-detect power-down mode<br>1 = Disable<br>0 = Enable<br>See also Register 10h, Bit [4] for PLL off.  | RW               | 1       |
| 18.10   | 100BASE-TX Latency         | 1 = MII output is random latency<br>0 = MII output is fixed latency<br>For both settings, all bytes of received preamble are passed to the MII output.   | RW               | 0       |
| 18.9:7  | Reserved                   | Reserved   | RW               | 00_0    |

# KSZ8081MLX

**TABLE 4-2: REGISTER DESCRIPTIONS (CONTINUED)**

| Address  | Name                                      | Description  | Mode<br>Note 4-1 | Default |
|--|---|--|------------------|---------|
| 18.6   | 10BASE-T Preamble Restore                 | 1 = Restore received preamble to MII output<br>0 = Remove all seven bytes of preamble before sending frame (starting with SFD) to MII output | RW               | 0       |
| 18.5:0   | Reserved                                  | Reserved   | RO               | 00_0001 |
| <b>Register 1Bh – Interrupt Control/Status</b> |   |  |                  |         |
| 1B.15  | Jabber Interrupt Enable                   | 1 = Enable jabber interrupt<br>0 = Disable jabber interrupt  | RW               | 0       |
| 1B.14  | Receive Error Interrupt Enable            | 1 = Enable receive error interrupt<br>0 = Disable receive error interrupt  | RW               | 0       |
| 1B.13  | Page Received Interrupt Enable            | 1 = Enable page received interrupt<br>0 = Disable page received interrupt  | RW               | 0       |
| 1B.12  | Parallel Detect Fault Interrupt Enable    | 1 = Enable parallel detect fault interrupt<br>0 = Disable parallel detect fault interrupt  | RW               | 0       |
| 1B.11  | Link Partner Acknowledge Interrupt Enable | 1 = Enable link partner acknowledge interrupt<br>0 = Disable link partner acknowledge interrupt  | RW               | 0       |
| 1B.10  | Link-Down Interrupt Enable                | 1 = Enable link-down interrupt<br>0 = Disable link-down interrupt  | RW               | 0       |
| 1B.9   | Remote Fault Interrupt Enable             | 1 = Enable remote fault interrupt<br>0 = Disable remote fault interrupt  | RW               | 0       |
| 1B.8   | Link-Up Interrupt Enable                  | 1 = Enable link-up interrupt<br>0 = Disable link-up interrupt  | RW               | 0       |
| 1B.7   | Jabber Interrupt                          | 1 = Jabber occurred<br>0 = Jabber did not occur  | RO/SC            | 0       |
| 1B.6   | Receive Error Interrupt                   | 1 = Receive error occurred<br>0 = Receive error did not occur  | RO/SC            | 0       |
| 1B.5   | Page Receive Interrupt                    | 1 = Page receive occurred<br>0 = Page receive did not occur  | RO/SC            | 0       |
| 1B.4   | Parallel Detect Fault Interrupt           | 1 = Parallel detect fault occurred<br>0 = Parallel detect fault did not occur  | RO/SC            | 0       |
| 1B.3   | Link Partner Acknowledge Interrupt        | 1 = Link partner acknowledge occurred<br>0 = Link partner acknowledge did not occur  | RO/SC            | 0       |
| 1B.2   | Link-Down Interrupt                       | 1 = Link-down occurred<br>0 = Link-down did not occur  | RO/SC            | 0       |
| 1B.1   | Remote Fault Interrupt                    | 1 = Remote fault occurred<br>0 = Remote fault did not occur  | RO/SC            | 0       |



**TABLE 4-2: REGISTER DESCRIPTIONS (CONTINUED)**

| Address                                     | Name                         | Description   | Mode<br>Note 4-1 | Default     |
|---|------------------------------|---|------------------|-------------|
| 1B.0  | Link-Up Interrupt            | 1 = Link-up occurred<br>0 = Link-up did not occur   | RO/SC            | 0           |
| <b>Register 1Dh – LinkMD Control/Status</b> |                              |   |                  |             |
| 1D.15                                       | Cable Diagnostic Test Enable | 1 = Enable cable diagnostic test. After test has completed, this bit is self-cleared.<br>0 = Indicates cable diagnostic test (if enabled) has completed and the status information is valid for read.                             | RW/SC            | 0           |
| 1D.14:13                                    | Cable Diagnostic Test Result | [00] = Normal condition<br>[01] = Open condition has been detected in cable<br>[10] = Short condition has been detected in cable<br>[11] = Cable diagnostic test has failed   | RO               | 00          |
| 1D.12                                       | Short Cable Indicator        | 1 = Short cable (<10 meter) has been detected by LinkMD   | RO               | 0           |
| 1D.11:9                                     | Reserved                     | Reserved  | RW               | 000         |
| 1D.8:0                                      | Cable Fault Counter          | Distance to fault   | RO               | 0_0000_0000 |
| <b>Register 1Eh – PHY Control 1</b>         |                              |   |                  |             |
| 1E.15:10                                    | Reserved                     | Reserved  | RO               | 0000_00     |
| 1E.9  | Enable Pause (Flow Control)  | 1 = Flow control capable<br>0 = No flow control capability  | RO               | 0           |
| 1E.8  | Link Status                  | 1 = Link is up<br>0 = Link is down  | RO               | 0           |
| 1E.7  | Polarity Status              | 1 = Polarity is reversed<br>0 = Polarity is not reversed  | RO               | —           |
| 1E.6  | Reserved                     | Reserved  | RO               | 0           |
| 1E.5  | MDI/MDI-X State              | 1 = MDI-X<br>0 = MDI  | RO               | —           |
| 1E.4  | Energy Detect                | 1 = Signal present on receive differential pair<br>0 = No signal detected on receive differential pair  | RO               | 0           |
| 1E.3  | PHY Isolate                  | 1 = PHY in isolate mode<br>0 = PHY in normal operation  | RO               | 0           |
| 1E.2:0                                      | Operation Mode Indication    | [000] = Still in auto-negotiation<br>[001] = 10BASE-T half-duplex<br>[010] = 100BASE-TX half-duplex<br>[011] = Reserved<br>[100] = Reserved<br>[101] = 10BASE-T full-duplex<br>[110] = 100BASE-TX full-duplex<br>[111] = Reserved | RO               | 000         |
| <b>Register 1Fh – PHY Control 2</b>         |                              |   |                  |             |
| 1F.15                                       | HP_MDIX                      | 1 = HP Auto MDI/MDI-X mode<br>0 = Microchip Auto MDI/MDI-X mode   | RW               | 1           |

# KSZ8081MLX

**TABLE 4-2: REGISTER DESCRIPTIONS (CONTINUED)**

| Address | Name                    | Description  | Mode<br>Note 4-1 | Default |
|---------|-------------------------|--|------------------|---------|
| 1F.14   | MDI/MDI-X Select        | When Auto MDI/MDI-X is disabled,<br>1 = MDI-X mode<br>Transmit on RXP, RXM (Pins 10, 9) and Receive on TXP, TXM (Pins 12, 11)<br>0 = MDI mode<br>Transmit on TXP, TXM (Pins 12, 11) and Receive on RXP, RXM (Pins 10, 9) | RW               | 0       |
| 1F.13   | Pair Swap Disable       | 1 = Disable Auto MDI/MDI-X<br>0 = Enable Auto MDI/MDI-X  | RW               | 0       |
| 1F.12   | Reserved                | Reserved   | RW               | 0       |
| 1F.11   | Force Link              | 1 = Force link pass<br>0 = Normal link operation<br>This bit bypasses the control logic and allows the transmitter to send a pattern even if there is no link.   | RW               | 0       |
| 1F.10   | Power Saving            | 1 = Enable power saving<br>0 = Disable power saving  | RW               | 0       |
| 1F.9    | Interrupt Level         | 1 = Interrupt pin active high<br>0 = Interrupt pin active low  | RW               | 0       |
| 1F.8    | Enable Jabber           | 1 = Enable jabber counter<br>0 = Disable jabber counter  | RW               | 1       |
| 1F.7:6  | Reserved                | Reserved   | RW               | 0       |
| 1F.5:4  | LED Mode                | [00] = LED1: Speed<br>LED0: Link/Activity<br>[01] = LED1: Activity<br>LED0: Link<br>[10], [11] = Reserved  | RW               | 00      |
| 1F.3    | Disable Transmitter     | 1 = Disable transmitter<br>0 = Enable transmitter  | RW               | 0       |
| 1F.2    | Remote Loopback         | 1 = Remote (analog) loopback is enabled<br>0 = Normal mode   | RW               | 0       |
| 1F.1    | Enable SQE Test         | 1 = Enable SQE test<br>0 = Disable SQE test  | RW               | 0       |
| 1F.0    | Disable Data Scrambling | 1 = Disable scrambler<br>0 = Enable scrambler  | RW               | 0       |

**Note 4-1** RW = Read/Write; RO = Read Only; SC = Self-Cleared; LH = Latch High; LL = Latch Low.

## 5.0 OPERATIONAL CHARACTERISTICS

### 5.1 Absolute Maximum Ratings\*

|   |                 |
|---|-----------------|
| Supply Voltage ( $V_{IN}$ )             |                 |
| ( $V_{DD\_1.2}$ ).....                  | -0.5V to +1.8V  |
| ( $V_{DDIO}, V_{DDA\_3.3}$ ).....       | -0.5V to +5.0V  |
| Input Voltage (all inputs) .....        | -0.5V to +5.0V  |
| Output Voltage (all outputs) .....      | -0.5V to +5.0V  |
| Lead Temperature (soldering, 10s) ..... | +260°C          |
| Storage Temperature ( $T_S$ ).....      | -55°C to +150°C |

\*Exceeding the absolute maximum rating may damage the device. Stresses greater than the absolute maximum rating may cause permanent damage to the device. Operation of the device at these or any other conditions above those specified in the operating sections of this specification is not implied. Maximum conditions for extended periods may affect reliability.

### 5.2 Operating Ratings\*\*

|  |                    |
|--|--------------------|
| Supply Voltage                                   |                    |
| ( $V_{DDIO\_3.3}, V_{DDA\_3.3}$ ) .....          | +3.135V to +3.465V |
| ( $V_{DDIO\_2.5}$ ) .....                        | +2.375V to +2.625V |
| ( $V_{DDIO\_1.8}$ ) .....                        | +1.710V to +1.890V |
| Ambient Temperature                              |                    |
| ( $T_A$ Commercial) .....                        | 0°C to +70°C       |
| ( $T_A$ Industrial) .....                        | -40°C to +85°C     |
| Maximum Junction Temperature ( $T_J$ max.) ..... | +125°C             |
| Thermal Resistance ( $\Theta_{JA}$ ).....        | +76°C/W            |
| Thermal Resistance ( $\Theta_{JC}$ ) .....       | +15°C/W            |

\*\*The device is not guaranteed to function outside its operating ratings.

|   |
|---|
| <b>Note:</b> Do not drive input signals without power supplied to the device. |
|---|

# KSZ8081MLX

## 6.0 ELECTRICAL CHARACTERISTICS

$T_A = 25^\circ\text{C}$ . Specification is for packaged product only.

**TABLE 6-1: ELECTRICAL CHARACTERISTICS**

| Parameters   | Symbol                 | Min. | Typ. | Max.       | Units         | Note  |
|--|------------------------|------|------|------------|---------------|---|
| <b>Supply Current (<math>V_{DDIO}</math>, <math>V_{DDA\ 3.3} = 3.3\text{V}</math>), Note 6-1</b> |                        |      |      |            |               |   |
| 10BASE-T   | $I_{DD1\ 3.3\text{V}}$ | —    | 41   | —          | mA            | Full-duplex traffic @ 100% utilization              |
| 100BASE-TX   | $I_{DD2\ 3.3\text{V}}$ | —    | 47   | —          | mA            | Full-duplex traffic @ 100% utilization              |
| EDPD Mode  | $I_{DD3\ 3.3\text{V}}$ | —    | 20   | —          | mA            | Ethernet cable disconnected<br>(Reg. 18h.11 = 0)    |
| Power-Down Mode  | $I_{DD4\ 3.3\text{V}}$ | —    | 4    | —          | mA            | Software power-down<br>(Reg. 0h.11 = 1)             |
| <b>CMOS Level Inputs</b>   |                        |      |      |            |               |   |
| Input High Voltage   | $V_{IH}$               | 2.0  | —    | —          | V             | $V_{DDIO} = 3.3\text{V}$                            |
|  |                        | 1.8  | —    | —          |               | $V_{DDIO} = 2.5\text{V}$                            |
|  |                        | 1.3  | —    | —          |               | $V_{DDIO} = 1.8\text{V}$                            |
| Input Low Voltage  | $V_{IL}$               | —    | —    | 0.8        | V             | $V_{DDIO} = 3.3\text{V}$                            |
|  |                        | —    | —    | 0.7        |               | $V_{DDIO} = 2.5\text{V}$                            |
|  |                        | —    | —    | 0.5        |               | $V_{DDIO} = 1.8\text{V}$                            |
| Input Current  | $ I_{IN} $             | —    | —    | 10         | $\mu\text{A}$ | $V_{IN} = \text{GND} \sim V_{DDIO}$                 |
| <b>CMOS Level Outputs</b>  |                        |      |      |            |               |   |
| Output High Voltage  | $V_{OH}$               | 2.4  | —    | —          | V             | $V_{DDIO} = 3.3\text{V}$                            |
|  |                        | 2.0  | —    | —          |               | $V_{DDIO} = 2.5\text{V}$                            |
|  |                        | 1.5  | —    | —          |               | $V_{DDIO} = 1.8\text{V}$                            |
| Output Low Voltage   | $V_{OL}$               | —    | —    | 0.4        | V             | $V_{DDIO} = 3.3\text{V}$                            |
|  |                        | —    | —    | 0.4        |               | $V_{DDIO} = 2.5\text{V}$                            |
|  |                        | —    | —    | 0.3        |               | $V_{DDIO} = 1.8\text{V}$                            |
| Output Tri-State Leakage   | $ I_{OZ} $             | —    | —    | 10         | $\mu\text{A}$ | —   |
| <b>LED Output</b>  |                        |      |      |            |               |   |
| Output Drive Current   | $I_{LED}$              | —    | 8    | —          | mA            | Each LED pin (LED0, LED1)                           |
| <b>All Pull-Up/Pull-Down Pins (including Strapping Pins)</b>                                     |                        |      |      |            |               |   |
| Internal Pull-Up Resistance  | pu                     | 30   | 45   | 73         | k $\Omega$    | $V_{DDIO} = 3.3\text{V}$                            |
|  |                        | 39   | 61   | 102        | k $\Omega$    | $V_{DDIO} = 2.5\text{V}$                            |
|  |                        | 48   | 99   | 178        | k $\Omega$    | $V_{DDIO} = 1.8\text{V}$                            |
| Internal Pull-Down Resistance  | pd                     | 26   | 43   | 79         | k $\Omega$    | $V_{DDIO} = 3.3\text{V}$                            |
|  |                        | 34   | 59   | 113        | k $\Omega$    | $V_{DDIO} = 2.5\text{V}$                            |
|  |                        | 53   | 99   | 200        | k $\Omega$    | $V_{DDIO} = 1.8\text{V}$                            |
| <b>100BASE-TX Transmit (measured differentially after 1:1 transformer)</b>                       |                        |      |      |            |               |   |
| Peak Differential Output Voltage   | $V_O$                  | 0.95 | —    | 1.05       | V             | 100 $\Omega$ termination across differential output |
| Output Voltage Imbalance   | $V_{IMB}$              | —    | —    | 2          | %             | 100 $\Omega$ termination across differential output |
| Rise/Fall Time   | $t_r/t_f$              | 3    | —    | 5          | ns            | —   |
| Rise/Fall Time Imbalance   | —                      | 0    | —    | 0.5        | ns            | —   |
| Duty Cycle Distortion  | —                      | —    | —    | $\pm 0.25$ | ns            | —   |
| Overshoot  | —                      | —    | —    | 5          | %             | —   |
| Output Jitter  | —                      | —    | 0.7  | —          | ns            | Peak-to-peak  |

**TABLE 6-1: ELECTRICAL CHARACTERISTICS (CONTINUED)**

| Parameters   | Symbol    | Min. | Typ. | Max. | Units | Note   |
|--|-----------|------|------|------|-------|--|
| <b>10BASE-T Transmit (measured differentially after 1:1 transformer)</b> |           |      |      |      |       |  |
| Peak Differential Output Voltage   | $V_P$     | 2.2  | —    | 2.8  | V     | 100Ω termination across differential output  |
| Jitter Added   | —         | —    | —    | 3.5  | ns    | Peak-to-peak   |
| Rise/Fall Time   | $t_r/t_f$ | —    | 25   | —    | ns    | —  |
| <b>10BASE-T Receive</b>  |           |      |      |      |       |  |
| Squelch Threshold  | $V_{SQ}$  | —    | 400  | —    | mV    | 5 MHz square wave  |
| <b>Transmitter - Drive Setting</b>                                       |           |      |      |      |       |  |
| Reference Voltage of $I_{SET}$   | $V_{SET}$ | —    | 0.65 | —    | V     | $R(I_{SET}) = 6.49\text{ k}\Omega$   |
| <b>100 Mbps Mode - Industrial Applications Parameters</b>                |           |      |      |      |       |  |
| Clock Phase Delay – XI Input to MII TXC Output                           | —         | 15   | 20   | 25   | ns    | XI (25 MHz clock input) to MII TXC (25 MHz clock output) delay, referenced to rising edges of both clocks.   |
| Link Loss Reaction (Indication) Time                                     | $t_{llr}$ | —    | 4.4  | —    | μs    | Link loss detected at receive differential inputs to PHY signal indication time for each of the following:<br>1. For LED mode 01, Link LED output changes from low (link-up) to high (link-down).<br>2. INTRP pin asserts for link-down status change. |

**Note 6-1** Current consumption is for the single 3.3V supply KSZ8081MLX device only, and includes the transmit driver current and the 1.2V supply voltage ( $V_{DD_{1,2}}$ ) that are supplied by the KSZ8081MLX.

# KSZ8081MLX

## 7.0 TIMING DIAGRAMS

### 7.1 MII SQE Timing (10BASE-T)

FIGURE 7-1: MII SQE TIMING (10BASE-T)

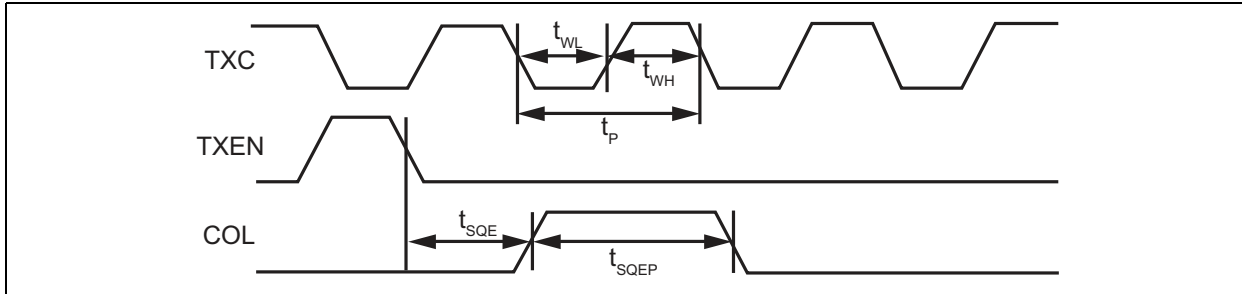
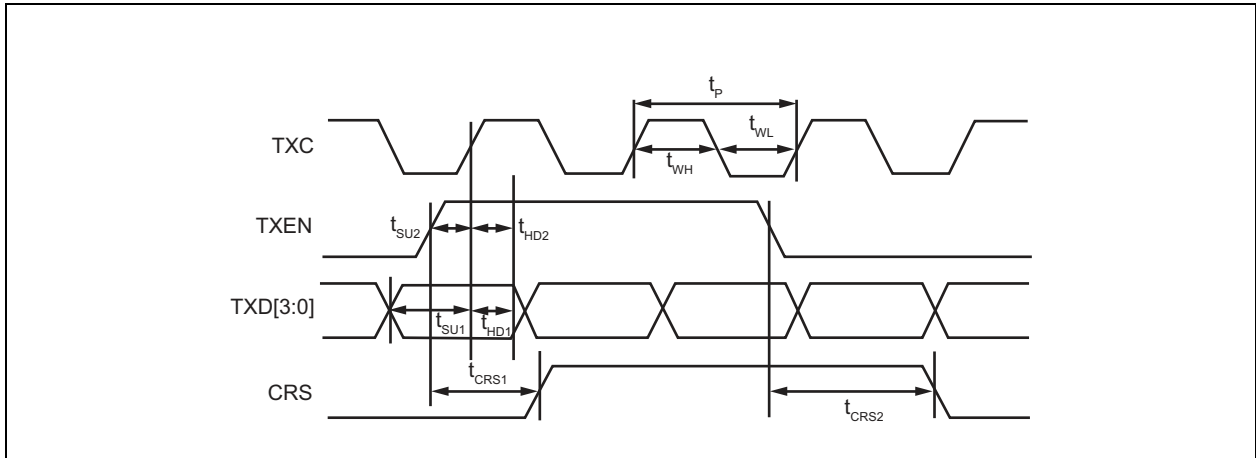


TABLE 7-1: MII SQE TIMING (10BASE-T) PARAMETERS

| Parameter  | Description                            | Min. | Typ. | Max. | Units   |
|------------|--|------|------|------|---------|
| $t_P$      | TXC period                             | —    | 400  | —    | ns      |
| $t_{WL}$   | TXC pulse width low                    | —    | 200  | —    | ns      |
| $t_{WH}$   | TXC pulse width high                   | —    | 200  | —    | ns      |
| $t_{SQE}$  | COL (SQE) delay after TXEN de-asserted | —    | 2.2  | —    | $\mu$ s |
| $t_{SQEP}$ | COL (SQE) pulse duration               | —    | 1.0  | —    | $\mu$ s |

## 7.2 MII Transmit Timing (10BASE-T)

**FIGURE 7-2: MII TRANSMIT TIMING (10BASE-T)**



**TABLE 7-2: MII TRANSMIT TIMING (10BASE-T) PARAMETERS**

| Parameter  | Description                           | Min. | Typ. | Max. | Units   |
|------------|---------------------------------------|------|------|------|---------|
| $t_p$      | TXC period                            | —    | 400  | —    | ns      |
| $t_{WL}$   | TXC pulse width low                   | —    | 200  | —    | ns      |
| $t_{WH}$   | TXC pulse width high                  | —    | 200  | —    | ns      |
| $t_{SU1}$  | TXD[3:0] setup to rising edge of TXC  | 120  | —    | —    | ns      |
| $t_{SU2}$  | TXEN setup to rising edge of TXC      | 120  | —    | —    | ns      |
| $t_{HD1}$  | TXD[3:0] hold from rising edge of TXC | 0    | —    | —    | ns      |
| $t_{HD2}$  | TXEN hold from rising edge of TXC     | 0    | —    | —    | ns      |
| $t_{CRS1}$ | TXEN high to CRS asserted latency     | —    | 600  | —    | ns      |
| $t_{CRS2}$ | TXEN low to CRS de-asserted latency   | —    | 1.0  | —    | $\mu$ s |

# KSZ8081MLX

## 7.3 MII Receive Timing (10BASE-T)

FIGURE 7-3: MII RECEIVE TIMING (10BASE-T)

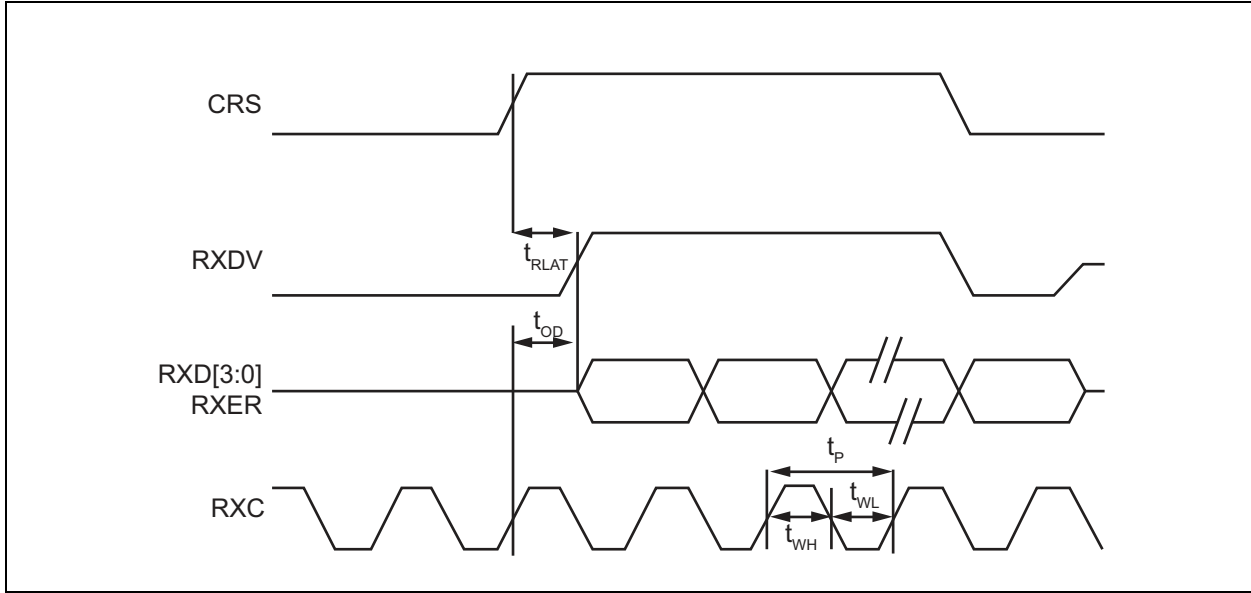


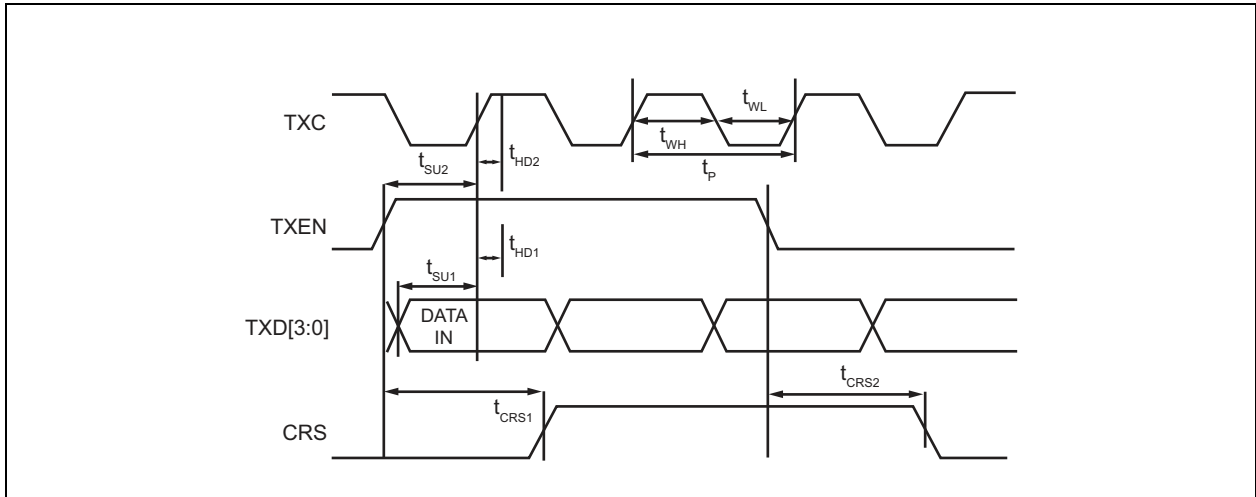
TABLE 7-3: MII RECEIVE TIMING (10BASE-T) PARAMETERS

| Parameter  | Description   | Min. | Typ. | Max. | Units   |
|------------|---|------|------|------|---------|
| $t_p$      | RXC period  | —    | 400  | —    | ns      |
| $t_{WL}$   | RXC pulse width low   | —    | 200  | —    | ns      |
| $t_{WH}$   | RXC pulse width high  | —    | 200  | —    | ns      |
| $t_{OD}$   | (RXDV, RXD[3:0], RXER) output delay from rising edge of RXC | —    | 205  | —    | ns      |
| $t_{RLAT}$ | CRS to (RXDV, RXD[3:0]) latency                             | —    | 7.2  | —    | $\mu$ s |



## 7.4 MII Transmit Timing (100BASE-TX)

**FIGURE 7-4: MII TRANSMIT TIMING (100BASE-TX)**



**TABLE 7-4: MII TRANSMIT TIMING (100BASE-TX) PARAMETERS**

| Parameter  | Description                           | Min. | Typ. | Max. | Units |
|------------|---------------------------------------|------|------|------|-------|
| $t_p$      | TXC period                            | —    | 40   | —    | ns    |
| $t_{WL}$   | TXC pulse width low                   | —    | 20   | —    | ns    |
| $t_{WH}$   | TXC pulse width high                  | —    | 20   | —    | ns    |
| $t_{SU1}$  | TXD[3:0] setup to rising edge of TXC  | 10   | —    | —    | ns    |
| $t_{SU2}$  | TXEN setup to rising edge of TXC      | 10   | —    | —    | ns    |
| $t_{HD1}$  | TXD[3:0] hold from rising edge of TXC | 0    | —    | —    | ns    |
| $t_{HD2}$  | TXEN hold from rising edge of TXC     | 0    | —    | —    | ns    |
| $t_{CRS1}$ | TXEN high to CRS asserted latency     | —    | 72   | —    | ns    |
| $t_{CRS2}$ | TXEN low to CRS de-asserted latency   | —    | 72   | —    | ns    |

# KSZ8081MLX

## 7.5 MII Receive Timing (100BASE-TX)

FIGURE 7-5: MII RECEIVE TIMING (100BASE-TX)

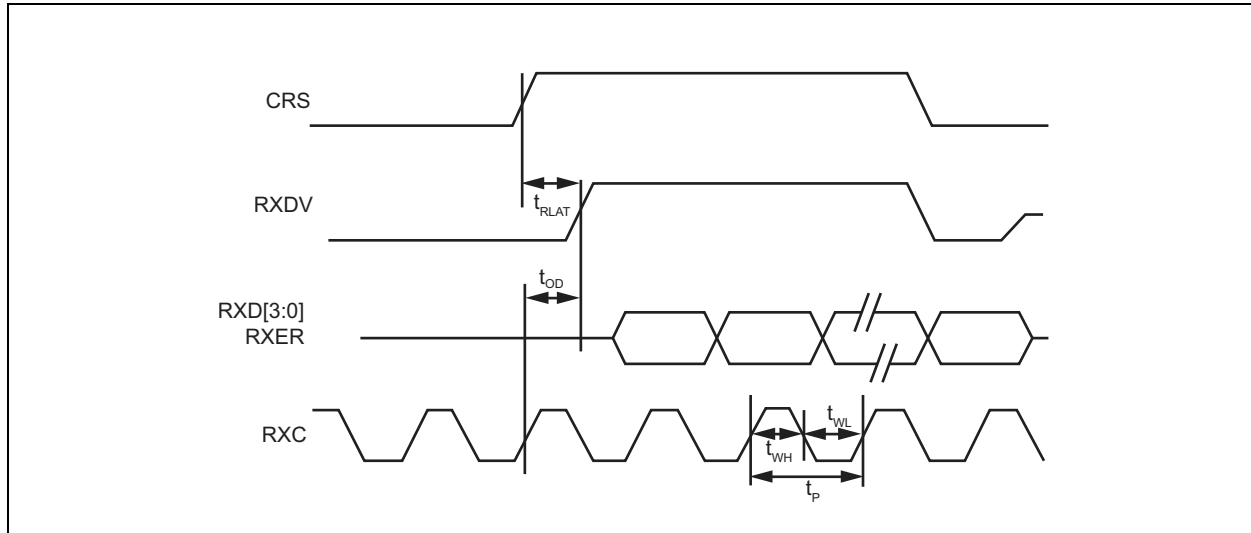
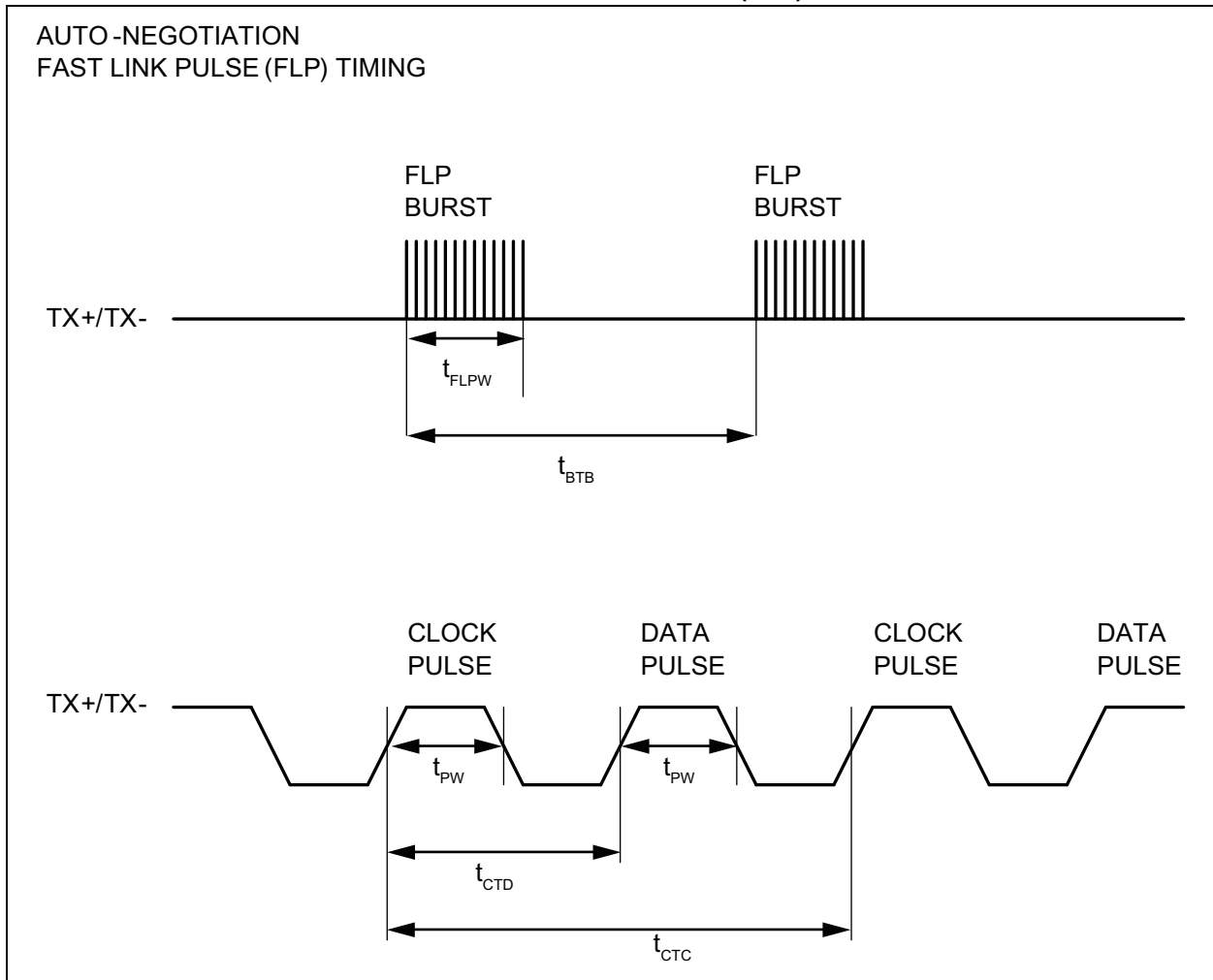


TABLE 7-5: MII RECEIVE TIMING (10BASE-T) PARAMETERS

| Parameter  | Description   | Min. | Typ. | Max. | Units |
|------------|---|------|------|------|-------|
| $t_p$      | RXC period  | —    | 40   | —    | ns    |
| $t_{WL}$   | RXC pulse width low   | —    | 20   | —    | ns    |
| $t_{WH}$   | RXC pulse width high  | —    | 20   | —    | ns    |
| $t_{OD}$   | (RXDV, RXD[3:0], RXER) output delay from rising edge of RXC | 16   | 21   | 25   | ns    |
| $t_{RLAT}$ | CRS to (RXDV, RXD[3:0]) latency                             | —    | 170  | —    | ns    |

## 7.6 Auto-Negotiation Timing

**FIGURE 7-6: AUTO-NEGOTIATION FAST LINK PULSE (FLP) TIMING**



**TABLE 7-6: AUTO-NEGOTIATION FAST LINK PULSE TIMING PARAMETERS**

| Parameter  | Description                               | Min. | Typ. | Max. | Units   |
|------------|---|------|------|------|---------|
| $t_{BTB}$  | FLP burst to FLP burst                    | 8    | 16   | 24   | ms      |
| $t_{FLPW}$ | FLP burst width                           | —    | 2    | —    | ms      |
| $t_{PW}$   | Clock/Data pulse width                    | —    | 100  | —    | ns      |
| $t_{CTD}$  | Clock pulse to data pulse                 | 55.5 | 64   | 69.5 | $\mu$ s |
| $t_{CTC}$  | Clock pulse to clock pulse                | 111  | 128  | 139  | $\mu$ s |
| —          | Number of clock/data pulses per FLP burst | 17   | —    | 33   | —       |

# KSZ8081MLX

## 7.7 MDC/MDIO Timing

FIGURE 7-7: MDC/MDIO TIMING

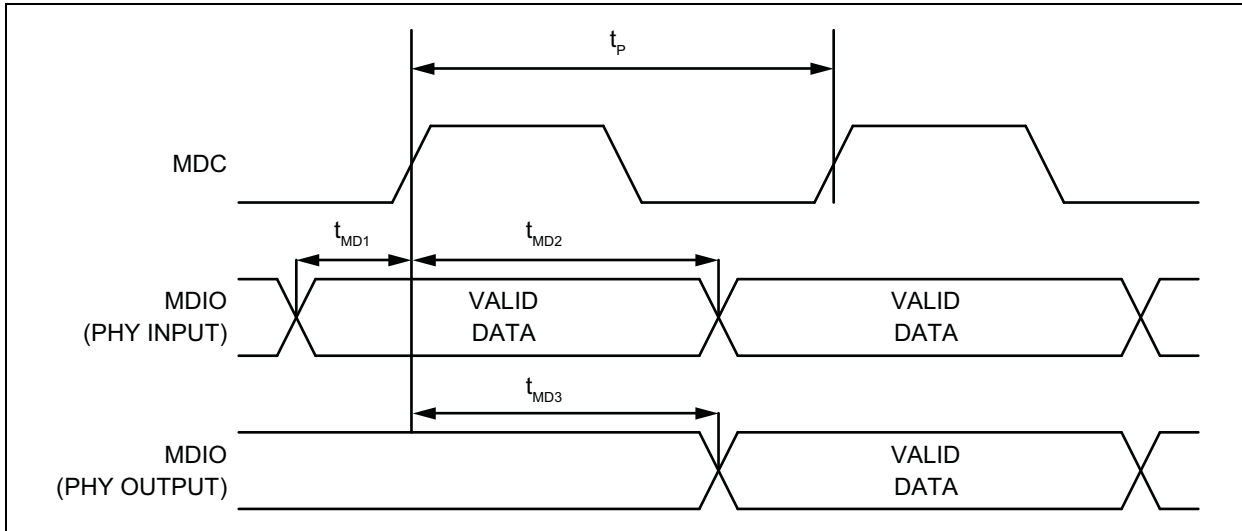


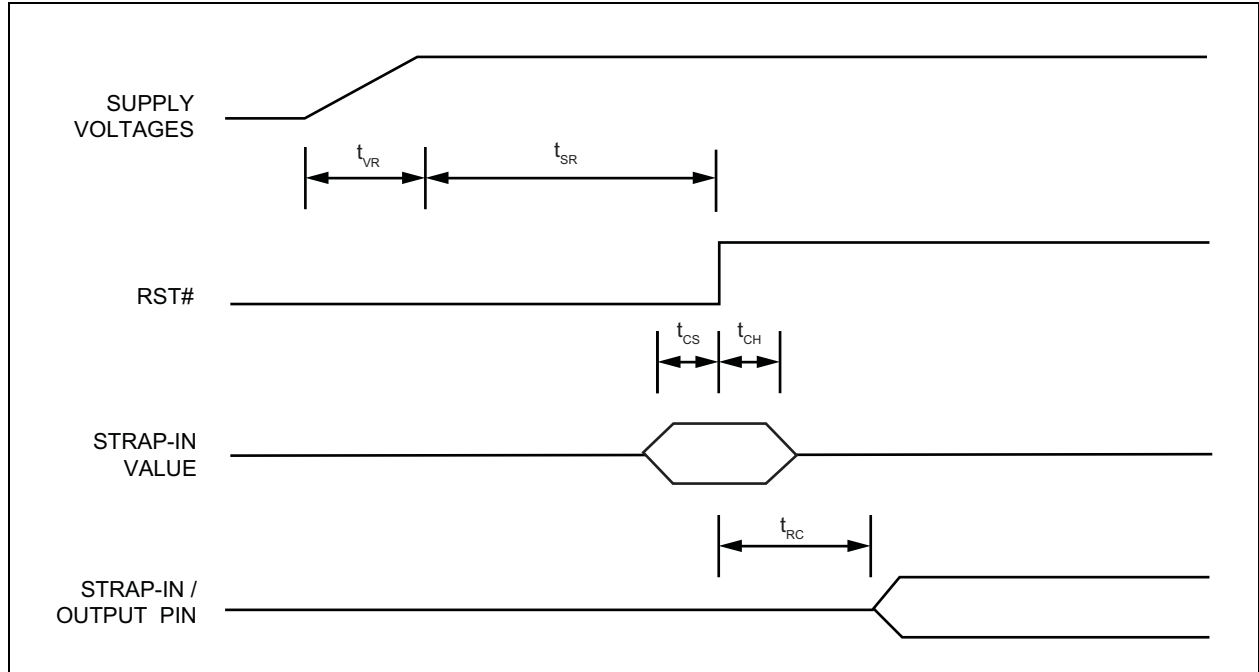
TABLE 7-7: MDC/MDIO TIMING PARAMETERS

| Parameter | Description                                     | Min. | Typ. | Max. | Units |
|-----------|---|------|------|------|-------|
| $f_c$     | MDC Clock Frequency                             | —    | 2.5  | 10   | MHz   |
| $t_p$     | MDC period                                      | —    | 400  | —    | ns    |
| $t_{MD1}$ | MDIO (PHY input) setup to rising edge of MDC    | 10   | —    | —    | ns    |
| $t_{MD2}$ | MDIO (PHY input) hold from rising edge of MDC   | 4    | —    | —    | ns    |
| $t_{MD3}$ | MDIO (PHY output) delay from rising edge of MDC | 5    | 222  | —    | ns    |

## 7.8 Power-Up/Reset Timing

The KSZ8081MLX reset timing requirement is summarized in Figure 7-8 and Table 7-8.

**FIGURE 7-8: POWER-UP/RESET TIMING**



**TABLE 7-8: POWER-UP/RESET TIMING PARAMETERS**

| Parameter | Description   | Min. | Typ. | Max. | Units   |
|-----------|---|------|------|------|---------|
| $t_{VR}$  | Supply voltage ( $V_{DDIO}$ , $V_{DDA\_3.3}$ ) rise time            | 300  | —    | —    | $\mu s$ |
| $t_{SR}$  | Stable supply voltage ( $V_{DDIO}$ , $V_{DDA\_3.3}$ ) to reset high | 10   | —    | —    | ms      |
| $t_{CS}$  | Configuration setup time  | 5    | —    | —    | ns      |
| $t_{CH}$  | Configuration hold time   | 5    | —    | —    | ns      |
| $t_{RC}$  | Reset to strap-in pin output  | 6    | —    | —    | ns      |

The supply voltage ( $V_{DDIO}$  and  $V_{DDA\_3.3}$ ) power-up waveform should be monotonic. The 300  $\mu s$  minimum rise time is from 10% to 90%.

For warm reset, the reset (RST#) pin should be asserted low for a minimum of 500  $\mu s$ . The strap-in pin values are read and updated at the de-assertion of reset.

After the de-assertion of reset, wait a minimum of 100  $\mu s$  before starting programming on the MIIM (MDC/MDIO) interface.

# KSZ8081MLX

## 8.0 RESET CIRCUIT

Figure 8-1 shows a reset circuit recommended for powering up the KSZ8081MLX if reset is triggered by the power supply.

FIGURE 8-1: RECOMMENDED RESET CIRCUIT

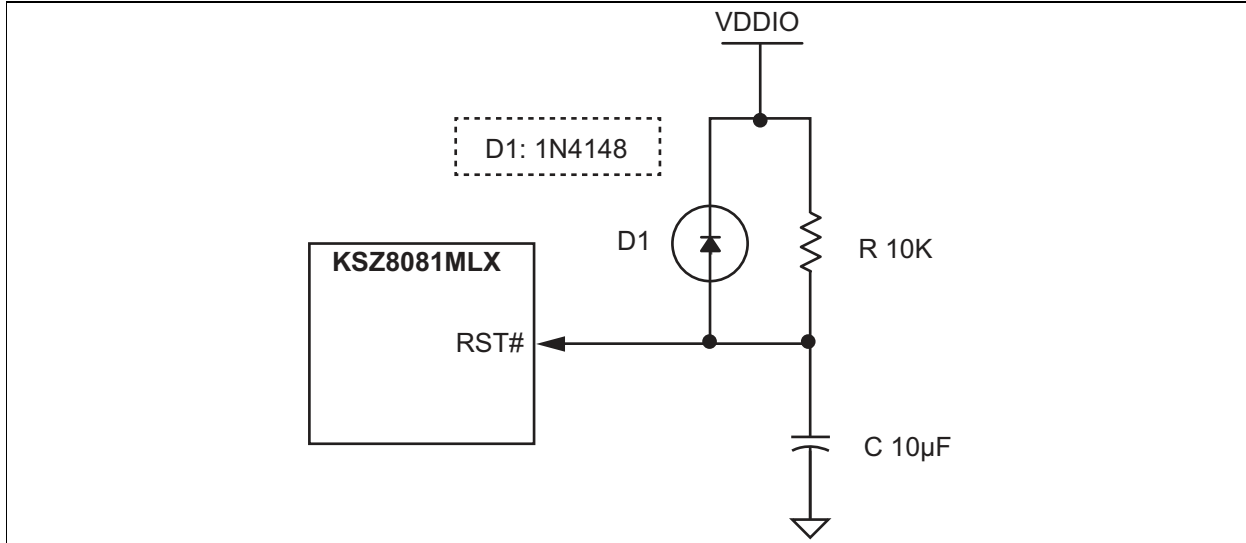
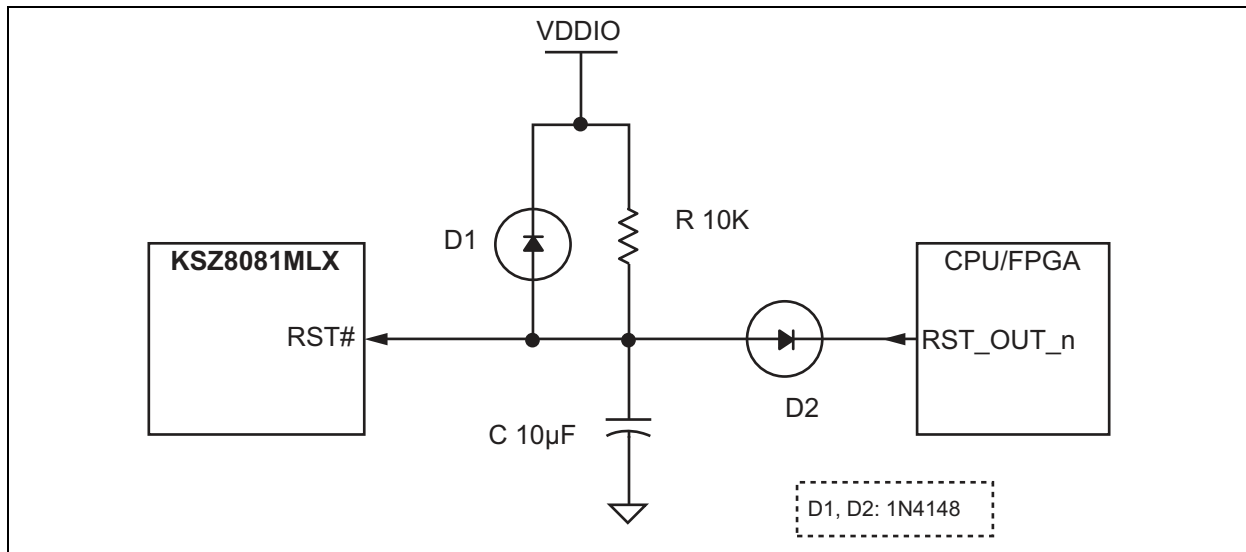


Figure 8-2 shows a reset circuit recommended for applications where reset is driven by another device (for example, the CPU or an FPGA). The reset out RST\_OUT\_n from CPU/FPGA provides the warm reset after power up reset. D2 is used if using different  $V_{DDIO}$  between the switch and CPU/FPGA, otherwise, the different  $V_{DDIO}$  will fight each other. If different  $V_{DDIO}$  have to use in a special case, a low  $V_F$  (<0.3V) diode is required (for example, Vishay's BAT54, MSS1P2L and so on), or a level shifter device can be used too. If Ethernet device and CPU/FPGA use same  $V_{DDIO}$  voltage, D2 can be removed to connect both devices directly. Usually, Ethernet device and CPU/FPGA should use same  $V_{DDIO}$  voltage.

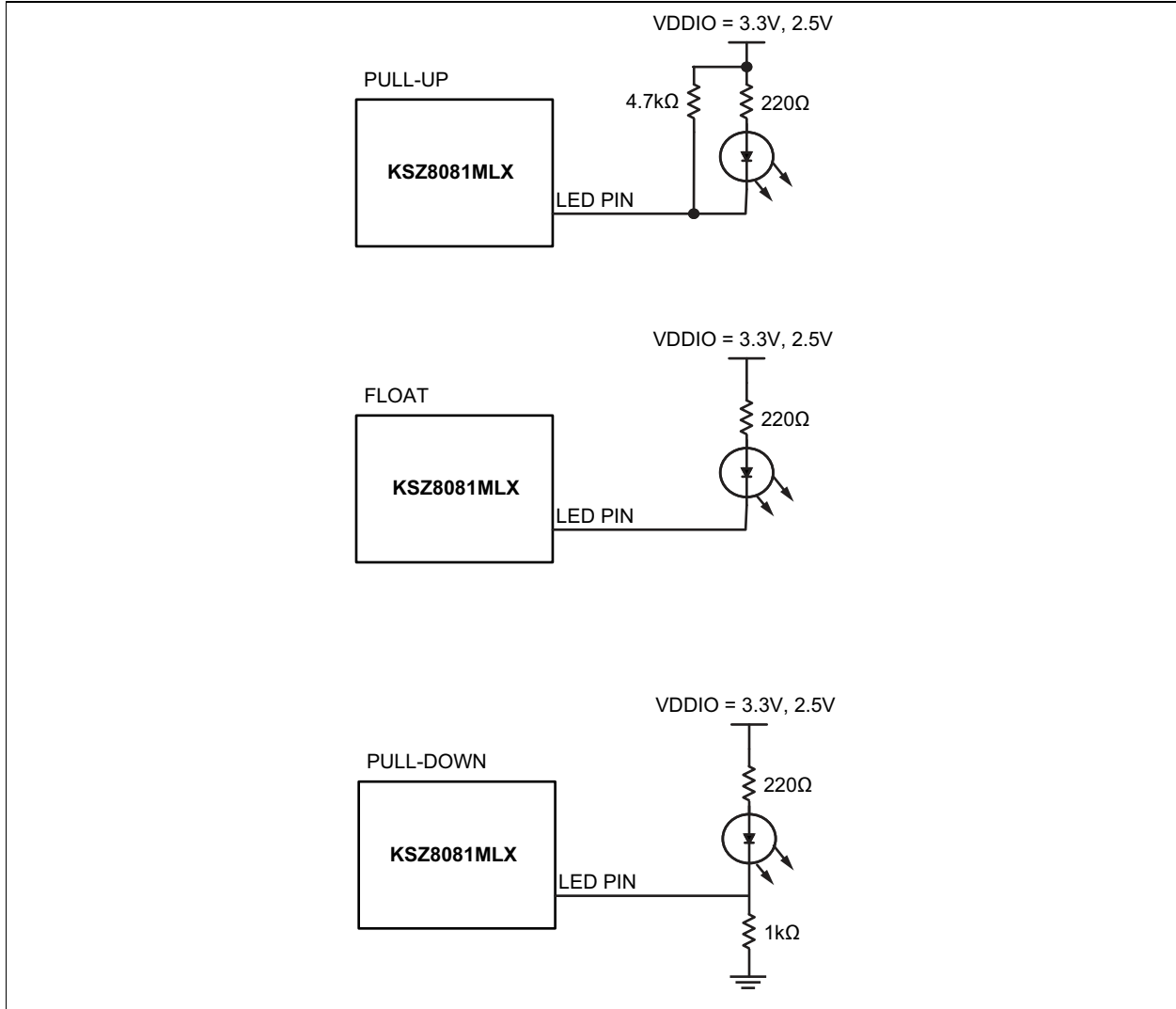
FIGURE 8-2: RECOMMENDED RESET CIRCUIT FOR CPU/FPGA RESET OUTPUT



## 9.0 REFERENCE CIRCUITS — LED STRAP-IN PINS

The pull-up, float, and pull-down reference circuits for the LED0/NWAYEN strapping pin are shown in Figure 9-1 for 3.3V and 2.5V  $V_{DDIO}$ .

**FIGURE 9-1: REFERENCE CIRCUITS FOR LED STRAPPING PINS**



For 1.8V  $V_{DDIO}$ , LED indication support is not recommended due to the low voltage. Without the LED indicator, the SPEED and NWAYEN strap-in pins are functional with a 4.7 k $\Omega$  pull-up to 1.8V  $V_{DDIO}$  or float for a value of '1', and with a 1.0 k $\Omega$  pull-down to ground for a value of '0'.

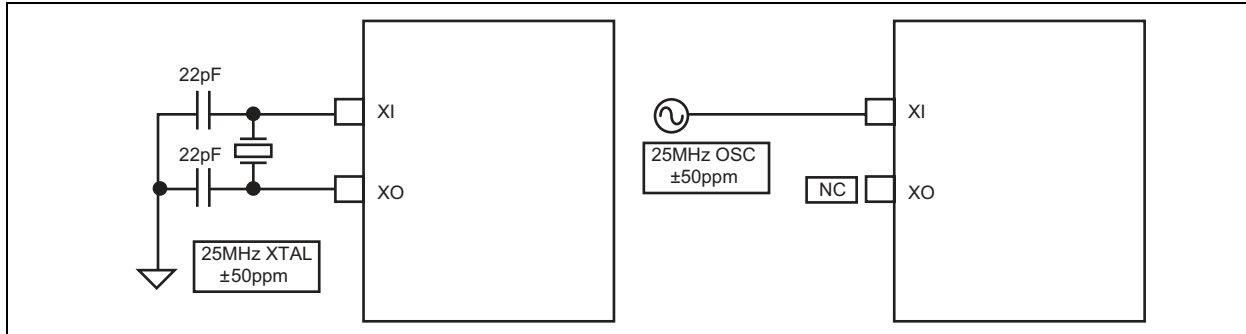
If using RJ45 jacks with integrated LEDs and 1.8V  $V_{DDIO}$ , a level shifting is required from LED 3.3V to 1.8V. For example, use a bipolar transistor or a level shift device.

# KSZ8081MLX

## 10.0 REFERENCE CLOCK - CONNECTION AND SELECTION

A crystal or external clock source, such as an oscillator, is used to provide the reference clock for the KSZ8081MLX. For the KSZ8081MLX in all operating modes, the reference clock is 25 MHz. The reference clock connections to XI (Pin 15) and XO (Pin 14), and the reference clock selection criteria, are provided in [Figure 10-1](#) and [Table 10-1](#).

**FIGURE 10-1: 25 MHz CRYSTAL/OSCILLATOR REFERENCE CLOCK CONNECTION**



**TABLE 10-1: 25 MHz CRYSTAL/REFERENCE CLOCK SELECTION CRITERIA**

| Characteristics                                       | Value   |
|---|---------|
| Frequency   | 25 MHz  |
| Frequency Tolerance (max.); <a href="#">Note 10-1</a> | ±50 ppm |
| Crystal Series Resistance (typ.)                      | 40Ω     |
| Crystal Load Capacitance (typ.)                       | 16 pF   |

**Note 10-1** ±60 ppm for overtemperature crystal.



## 11.0 MAGNETIC - CONNECTION AND SELECTION

A 1:1 isolation transformer is required at the line interface. Use one with integrated common-mode chokes for designs exceeding FCC requirements.

The KSZ8081MLX design incorporates voltage-mode transmit drivers and on-chip terminations.

With the voltage-mode implementation, the transmit drivers supply the common-mode voltages to the two differential pairs. Therefore, the two transformer center tap pins on the KSZ8081MLX side should not be connected to any power supply source on the board; instead, the center tap pins should be separated from one another and connected through separate 0.1  $\mu\text{F}$  common-mode capacitors to ground. Separation is required because the common-mode voltage is different between transmitting and receiving differential pairs.

Figure 11-1 shows the typical magnetic interface circuit for the KSZ8081MLX.

**FIGURE 11-1: TYPICAL MAGNETIC INTERFACE CIRCUIT**

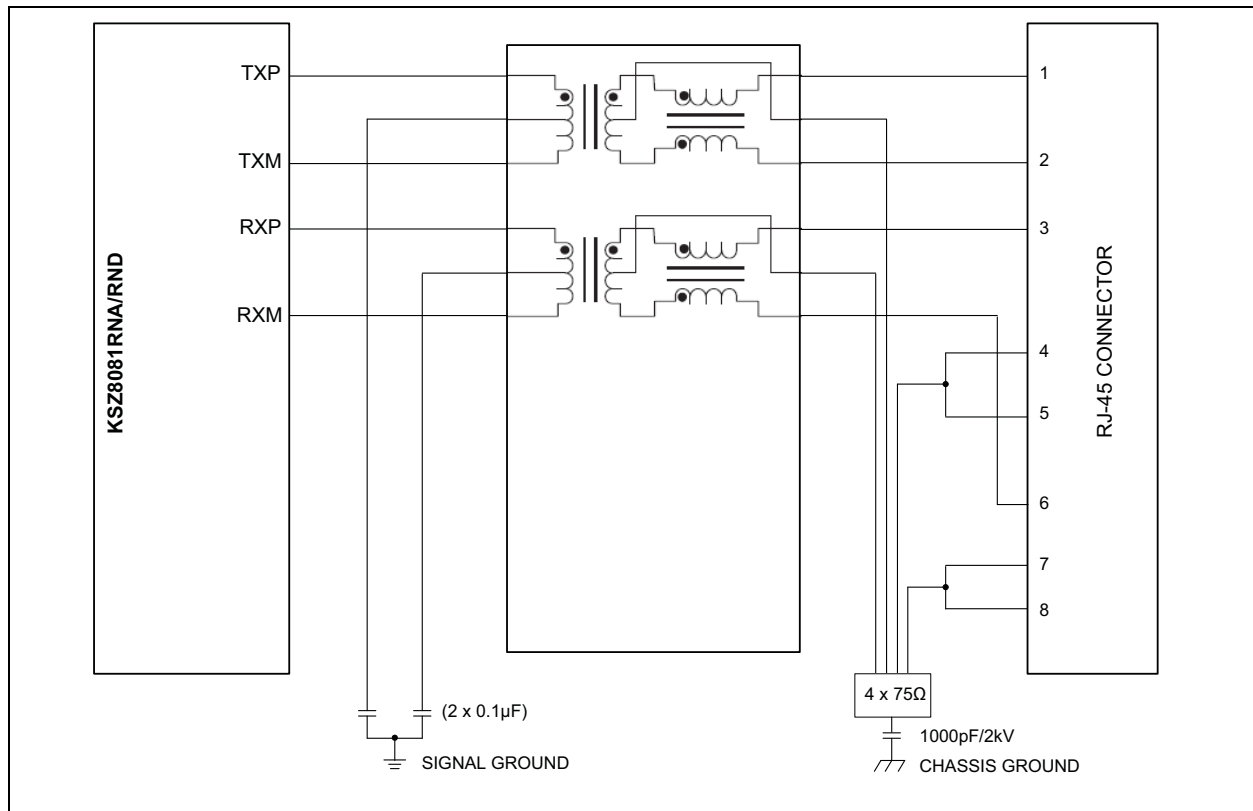


Table 11-1 lists recommended magnetic characteristics.

**TABLE 11-1: MAGNETICS SELECTION CRITERIA**

| Parameter                      | Value                        | Test Conditions       |
|--------------------------------|------------------------------|-----------------------|
| Turns Ratio                    | 1 CT : 1 CT                  | —                     |
| Open-Circuit Inductance (min.) | 350 $\mu\text{H}$            | 100 mV, 100 kHz, 8 mA |
| Insertion Loss (max.)          | -1.1 dB                      | 100 kHz to 100 MHz    |
| HIPOT (min.)                   | 1500 $\text{V}_{\text{RMS}}$ | —                     |

Table 11-2 is a list of compatible single-port magnetics with separated transformer center tap pins on the PHY chip side that can be used with the KSZ8081MLX.

# KSZ8081MLX

---

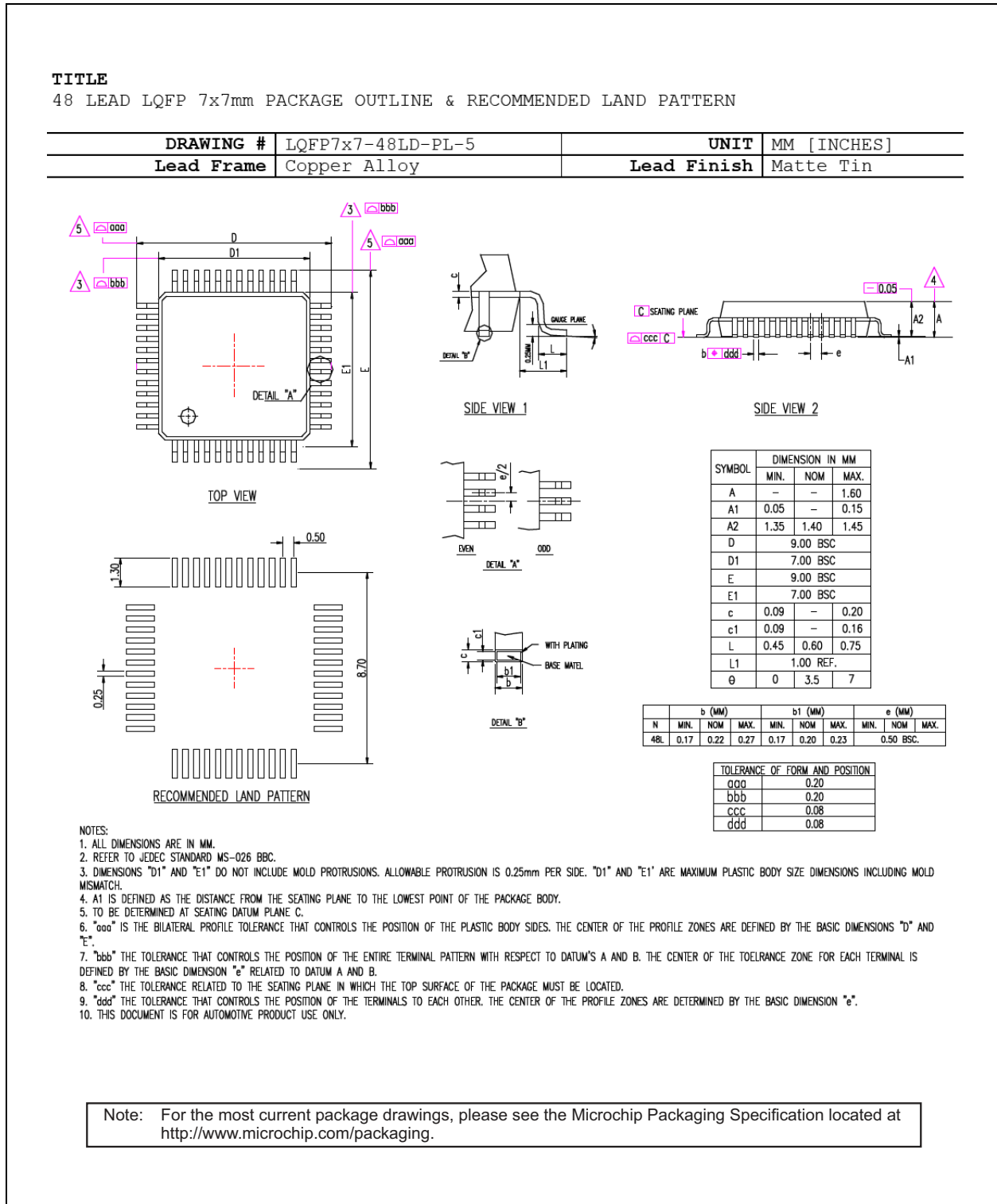
---

**TABLE 11-2: COMPATIBLE SINGLE-PORT 10/100 MAGNETICS**

| <b>Manufacturer</b> | <b>Part Number</b> | <b>Temperature Range</b> | <b>Magnetic + RJ-45</b> |
|---------------------|--------------------|--------------------------|-------------------------|
| Bel Fuse            | S558-5999-U7       | 0°C to 70°C              | No                      |
| Bel Fuse            | SI-46001-F         | 0°C to 70°C              | Yes                     |
| Bel Fuse            | SI-50170-F         | 0°C to 70°C              | Yes                     |
| Delta               | LF8505             | 0°C to 70°C              | No                      |
| HALO                | HFJ11-2450E        | 0°C to 70°C              | Yes                     |
| HALO                | TG110-E055N5       | -40°C to 85°C            | No                      |
| LANKom              | LF-H41S-1          | 0°C to 70°C              | No                      |
| Pulse               | H1102              | 0°C to 70°C              | No                      |
| Pulse               | H1260              | 0°C to 70°C              | No                      |
| Pulse               | HX1188             | -40°C to 85°C            | No                      |
| Pulse               | J00-0014           | 0°C to 70°C              | Yes                     |
| Pulse               | JX0011D21NL        | -40°C to 85°C            | Yes                     |
| TDK                 | TLA-6T718A         | 0°C to 70°C              | Yes                     |
| Transpower          | HB726              | 0°C to 70°C              | No                      |
| Würth/Midcom        | 000-7090-37R-LF1   | -40°C to 85°C            | No                      |

## 12.0 PACKAGE OUTLINE

FIGURE 12-1: 48-LEAD LQFP 7 MM X 7 MM PACKAGE



# KSZ8081MLX

---

## APPENDIX A: DATA SHEET REVISION HISTORY

TABLE A-1: REVISION HISTORY

| Revision              | Section/Figure/Entry | Correction  |
|-----------------------|----------------------|---|
| DS00002264A (8-30-16) | —                    | Converted Micrel data sheet KSZ8081MLX to Microchip DS00002264A. Minor text changes throughout.   |
| DS00002264B (2-22-18) | Table 4-2            | <ul style="list-style-type: none"><li>• Updated Register 5h, Bits 4:0 to 0_0000.</li><li>• Updated Register 7h, Bit 15 to Reserved and RO.</li><li>• Updated Register 18h, Bits 5:0 to RO and 00_0001.</li><li>• Updated Register 1Eh, Bit 3 to RO.</li></ul> |
|                       | Table 6-1            | Added CMOS Level Inputs values and clarified CMOS Level Outputs section.  |

## THE MICROCHIP WEB SITE

Microchip provides online support via our WWW site at [www.microchip.com](http://www.microchip.com). This web site is used as a means to make files and information easily available to customers. Accessible by using your favorite Internet browser, the web site contains the following information:

- **Product Support** – Data sheets and errata, application notes and sample programs, design resources, user's guides and hardware support documents, latest software releases and archived software
- **General Technical Support** – Frequently Asked Questions (FAQ), technical support requests, online discussion groups, Microchip consultant program member listing
- **Business of Microchip** – Product selector and ordering guides, latest Microchip press releases, listing of seminars and events, listings of Microchip sales offices, distributors and factory representatives

## CUSTOMER CHANGE NOTIFICATION SERVICE

Microchip's customer notification service helps keep customers current on Microchip products. Subscribers will receive e-mail notification whenever there are changes, updates, revisions or errata related to a specified product family or development tool of interest.

To register, access the Microchip web site at [www.microchip.com](http://www.microchip.com). Under "Support", click on "Customer Change Notification" and follow the registration instructions.

## CUSTOMER SUPPORT

Users of Microchip products can receive assistance through several channels:

- Distributor or Representative
- Local Sales Office
- Field Application Engineer (FAE)
- Technical Support

Customers should contact their distributor, representative or field application engineer (FAE) for support. Local sales offices are also available to help customers. A listing of sales offices and locations is included in the back of this document.

**Technical support is available through the web site at: <http://microchip.com/support>**

# KSZ8081MLX

## PRODUCT IDENTIFICATION SYSTEM

To order or obtain information, e.g., on pricing or delivery, refer to the factory or the listed sales office.

| <u>PART NO.</u>   | <u>X</u>  | <u>X</u> | <u>X</u>          | <u>XX</u>   | — | <u>XX</u>  |
|---|---|----------|-------------------|-------------|---|------------|
| Device  | Interface   | Package  | Special Attribute | Temperature |   | Media Type |
| <b>Device:</b> KSZ8081<br><br><b>Interface:</b> M = MII<br><br><b>Package:</b> L = 48-pin LQFP<br><br><b>Special Attribute:</b> X = None<br><br><b>Temperature:</b> CA = 0°C to +70°C (Commercial)<br>IA = -40°C to +85°C (Industrial)<br><br><b>Media Type:</b> blank = Tray<br>TR = Tape & Reel | <b>Examples:</b><br><br>a) KSZ8081MLXCA<br>MII Interface<br>48-pin LQFP<br>No Special Attribute<br>Commercial Temperature<br>Tray<br><br>b) KSZ8081MLXIA<br>MII Interface<br>48-pin QFN<br>No Special Attribute<br>Industrial Temperature<br>Tray<br><br>c) KSZ8081MLXCA-TR<br>MII Interface<br>48-pin QFN<br>No Special Attribute<br>Commercial Temperature<br>Tape & Reel<br><br>d) KSZ8081MLXIA-TR<br>MII Interface<br>48-pin QFN<br>No Special Attribute<br>Industrial Temperature<br>Tape & Reel |          |                   |             |   |            |

---

**Note the following details of the code protection feature on Microchip devices:**

- Microchip products meet the specification contained in their particular Microchip Data Sheet.
- Microchip believes that its family of products is one of the most secure families of its kind on the market today, when used in the intended manner and under normal conditions.
- There are dishonest and possibly illegal methods used to breach the code protection feature. All of these methods, to our knowledge, require using the Microchip products in a manner outside the operating specifications contained in Microchip's Data Sheets. Most likely, the person doing so is engaged in theft of intellectual property.
- Microchip is willing to work with the customer who is concerned about the integrity of their code.
- Neither Microchip nor any other semiconductor manufacturer can guarantee the security of their code. Code protection does not mean that we are guaranteeing the product as “unbreakable.”

Code protection is constantly evolving. We at Microchip are committed to continuously improving the code protection features of our products. Attempts to break Microchip's code protection feature may be a violation of the Digital Millennium Copyright Act. If such acts allow unauthorized access to your software or other copyrighted work, you may have a right to sue for relief under that Act.

---

Information contained in this publication regarding device applications and the like is provided only for your convenience and may be superseded by updates. It is your responsibility to ensure that your application meets with your specifications. MICROCHIP MAKES NO REPRESENTATIONS OR WARRANTIES OF ANY KIND WHETHER EXPRESS OR IMPLIED, WRITTEN OR ORAL, STATUTORY OR OTHERWISE, RELATED TO THE INFORMATION, INCLUDING BUT NOT LIMITED TO ITS CONDITION, QUALITY, PERFORMANCE, MERCHANTABILITY OR FITNESS FOR PURPOSE. Microchip disclaims all liability arising from this information and its use. Use of Microchip devices in life support and/or safety applications is entirely at the buyer's risk, and the buyer agrees to defend, indemnify and hold harmless Microchip from any and all damages, claims, suits, or expenses resulting from such use. No licenses are conveyed, implicitly or otherwise, under any Microchip intellectual property rights unless otherwise stated.

**Trademarks**

The Microchip name and logo, the Microchip logo, AnyRate, AVR, AVR logo, AVR Freaks, BeaconThings, BitCloud, CryptoMemory, CryptoRF, dsPIC, FlashFlex, flexPWR, Helder, JukeBlox, KEELOQ, KEELOQ logo, Kleer, LANCheck, LINK MD, maXStylus, maXTouch, MediaLB, megaAVR, MOST, MOST logo, MPLAB, OptoLyzer, PIC, picoPower, PICSTART, PIC32 logo, Prochip Designer, QTouch, RightTouch, SAM-BA, SpyNIC, SST, SST Logo, SuperFlash, tinyAVR, UNI/O, and XMEGA are registered trademarks of Microchip Technology Incorporated in the U.S.A. and other countries.

ClockWorks, The Embedded Control Solutions Company, EtherSynch, Hyper Speed Control, HyperLight Load, IntelliMOS, mTouch, Precision Edge, and Quiet-Wire are registered trademarks of Microchip Technology Incorporated in the U.S.A.

Adjacent Key Suppression, AKS, Analog-for-the-Digital Age, Any Capacitor, AnyIn, AnyOut, BodyCom, chipKIT, chipKIT logo, CodeGuard, CryptoAuthentication, CryptoCompanion, CryptoController, dsPICDEM, dsPICDEM.net, Dynamic Average Matching, DAM, ECAN, EtherGREEN, In-Circuit Serial Programming, ICSP, Inter-Chip Connectivity, JitterBlocker, KleerNet, KleerNet logo, Mindi, MiWi, motorBench, MPASM, MPF, MPLAB Certified logo, MPLIB, MPLINK, MultiTRAK, NetDetach, Omniscient Code Generation, PICDEM, PICDEM.net, PICkit, PICtail, PureSilicon, QMatrix, RightTouch logo, REAL ICE, Ripple Blocker, SAM-ICE, Serial Quad I/O, SMART-I.S., SQI, SuperSwitcher, SuperSwitcher II, Total Endurance, TSHARC, USBCheck, VariSense, ViewSpan, WiperLock, Wireless DNA, and ZENA are trademarks of Microchip Technology Incorporated in the U.S.A. and other countries.

SQTP is a service mark of Microchip Technology Incorporated in the U.S.A.

Silicon Storage Technology is a registered trademark of Microchip Technology Inc. in other countries.

GestIC is a registered trademark of Microchip Technology Germany II GmbH & Co. KG, a subsidiary of Microchip Technology Inc., in other countries.

All other trademarks mentioned herein are property of their respective companies.

© 2018, Microchip Technology Incorporated, All Rights Reserved.

ISBN: 978-1-5224-2704-9

**QUALITY MANAGEMENT SYSTEM**  
**CERTIFIED BY DNV**  
**== ISO/TS 16949 ==**

*Microchip received ISO/TS-16949:2009 certification for its worldwide headquarters, design and wafer fabrication facilities in Chandler and Tempe, Arizona; Gresham, Oregon and design centers in California and India. The Company's quality system processes and procedures are for its PIC® MCUs and dsPIC® DSCs, KEELOQ® code hopping devices, Serial EEPROMs, microperipherals, nonvolatile memory and analog products. In addition, Microchip's quality system for the design and manufacture of development systems is ISO 9001:2000 certified.*



# MICROCHIP

## Worldwide Sales and Service

### AMERICAS

**Corporate Office**  
2355 West Chandler Blvd.  
Chandler, AZ 85224-6199  
Tel: 480-792-7200  
Fax: 480-792-7277  
Technical Support:  
<http://www.microchip.com/support>  
Web Address:  
[www.microchip.com](http://www.microchip.com)

#### Atlanta

Duluth, GA  
Tel: 678-957-9614  
Fax: 678-957-1455

#### Austin, TX

Tel: 512-257-3370

#### Boston

Westborough, MA  
Tel: 774-760-0087  
Fax: 774-760-0088

#### Chicago

Itasca, IL  
Tel: 630-285-0071  
Fax: 630-285-0075

#### Dallas

Addison, TX  
Tel: 972-818-7423  
Fax: 972-818-2924

#### Detroit

Novi, MI  
Tel: 248-848-4000

#### Houston, TX

Tel: 281-894-5983

#### Indianapolis

Noblesville, IN  
Tel: 317-773-8323  
Fax: 317-773-5453  
Tel: 317-536-2380

#### Los Angeles

Mission Viejo, CA  
Tel: 949-462-9523  
Fax: 949-462-9608  
Tel: 951-273-7800

#### Raleigh, NC

Tel: 919-844-7510

#### New York, NY

Tel: 631-435-6000

#### San Jose, CA

Tel: 408-735-9110  
Tel: 408-436-4270

#### Canada - Toronto

Tel: 905-695-1980  
Fax: 905-695-2078

### ASIA/PACIFIC

**Australia - Sydney**  
Tel: 61-2-9868-6733

**China - Beijing**  
Tel: 86-10-8569-7000

**China - Chengdu**  
Tel: 86-28-8665-5511

**China - Chongqing**  
Tel: 86-23-8980-9588

**China - Dongguan**  
Tel: 86-769-8702-9880

**China - Guangzhou**  
Tel: 86-20-8755-8029

**China - Hangzhou**  
Tel: 86-571-8792-8115

**China - Hong Kong SAR**  
Tel: 852-2943-5100

**China - Nanjing**  
Tel: 86-25-8473-2460

**China - Qingdao**  
Tel: 86-532-8502-7355

**China - Shanghai**  
Tel: 86-21-3326-8000

**China - Shenyang**  
Tel: 86-24-2334-2829

**China - Shenzhen**  
Tel: 86-755-8864-2200

**China - Suzhou**  
Tel: 86-186-6233-1526

**China - Wuhan**  
Tel: 86-27-5980-5300

**China - Xian**  
Tel: 86-29-8833-7252

**China - Xiamen**  
Tel: 86-592-2388138

**China - Zhuhai**  
Tel: 86-756-3210040

### ASIA/PACIFIC

**India - Bangalore**  
Tel: 91-80-3090-4444

**India - New Delhi**  
Tel: 91-11-4160-8631

**India - Pune**  
Tel: 91-20-4121-0141

**Japan - Osaka**  
Tel: 81-6-6152-7160

**Japan - Tokyo**  
Tel: 81-3-6880-3770

**Korea - Daegu**  
Tel: 82-53-744-4301

**Korea - Seoul**  
Tel: 82-2-554-7200

**Malaysia - Kuala Lumpur**  
Tel: 60-3-7651-7906

**Malaysia - Penang**  
Tel: 60-4-227-8870

**Philippines - Manila**  
Tel: 63-2-634-9065

**Singapore**  
Tel: 65-6334-8870

**Taiwan - Hsin Chu**  
Tel: 886-3-577-8366

**Taiwan - Kaohsiung**  
Tel: 886-7-213-7830

**Taiwan - Taipei**  
Tel: 886-2-2508-8600

**Thailand - Bangkok**  
Tel: 66-2-694-1351

**Vietnam - Ho Chi Minh**  
Tel: 84-28-5448-2100

### EUROPE

**Austria - Wels**  
Tel: 43-7242-2244-39  
Fax: 43-7242-2244-393

**Denmark - Copenhagen**  
Tel: 45-4450-2828  
Fax: 45-4485-2829

**Finland - Espoo**  
Tel: 358-9-4520-820

**France - Paris**  
Tel: 33-1-69-53-63-20  
Fax: 33-1-69-30-90-79

**Germany - Garching**  
Tel: 49-8931-9700

**Germany - Haan**  
Tel: 49-2129-3766400

**Germany - Heilbronn**  
Tel: 49-7131-67-3636

**Germany - Karlsruhe**  
Tel: 49-721-625370

**Germany - Munich**  
Tel: 49-89-627-144-0  
Fax: 49-89-627-144-44

**Germany - Rosenheim**  
Tel: 49-8031-354-560

**Israel - Ra'anana**  
Tel: 972-9-744-7705

**Italy - Milan**  
Tel: 39-0331-742611  
Fax: 39-0331-466781

**Italy - Padova**  
Tel: 39-049-7625286

**Netherlands - Drunen**  
Tel: 31-416-690399  
Fax: 31-416-690340

**Norway - Trondheim**  
Tel: 47-7289-7561

**Poland - Warsaw**  
Tel: 48-22-3325737

**Romania - Bucharest**  
Tel: 40-21-407-87-50

**Spain - Madrid**  
Tel: 34-91-708-08-90  
Fax: 34-91-708-08-91

**Sweden - Gothenberg**  
Tel: 46-31-704-60-40

**Sweden - Stockholm**  
Tel: 46-8-5090-4654

**UK - Wokingham**  
Tel: 44-118-921-5800  
Fax: 44-118-921-5820