



1780 MHz Cavity Bandpass Filter

ANATECH ELECTRONICS INC
RF & Microwave Filters & Products

Part Number: AB1780B716



Electrical specifications

Operating bandwidth: 1725~1835MHz
Insertion loss: =/ $<$ 1.0 dB
Return loss: $>$ 18 dB
Rejection: 43 dB@1865-2000 MHz
Average power handling: =/ $<$ 40 Watts
Peak power Handling: 1.4 KW
IMD3@1615 MHz: =/ $<$ 100 dBm@2x43 dBm
IMD5@1505 MHz: =/ $<$ 110 dBm@2x43 dBm

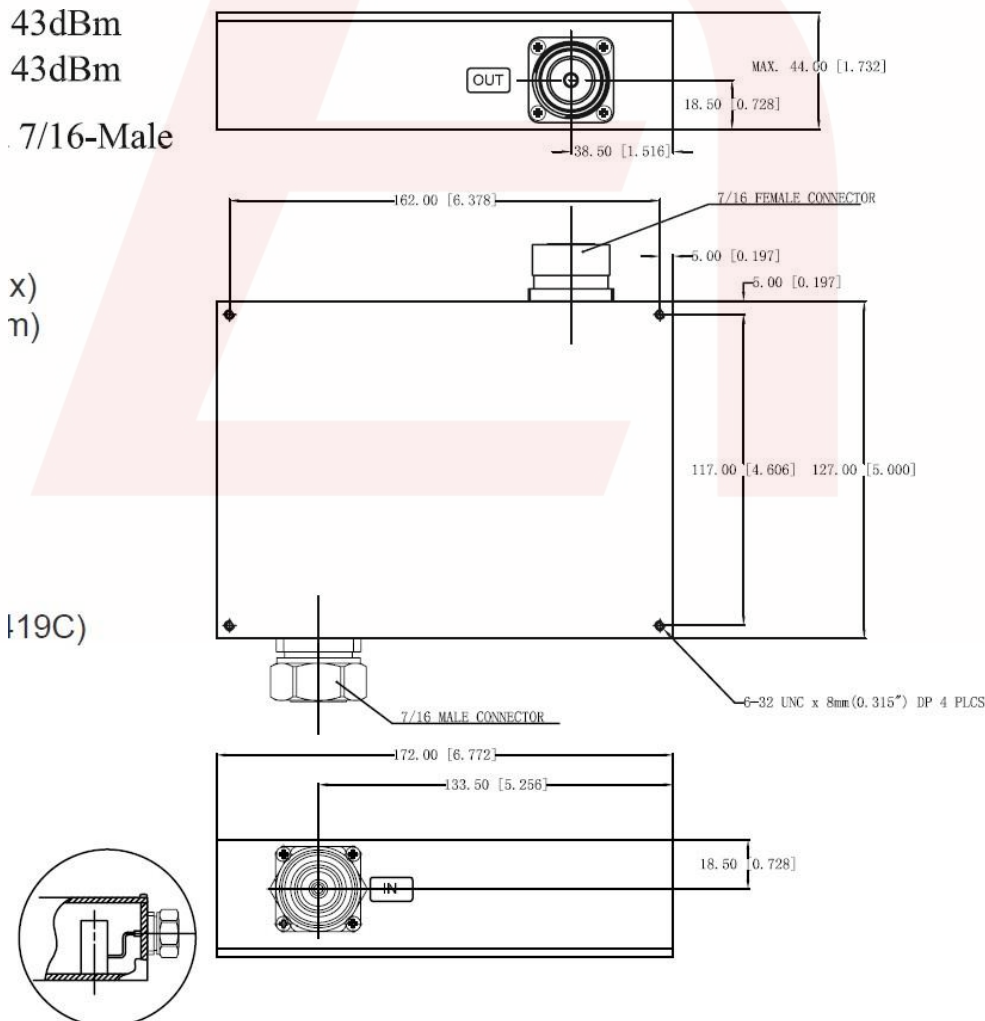
Mechanical

Mounting Method: Threaded Mounting Holes
Connector Type: 7/16 (Female/Male)
Dimensions: 6.77" X 5.00" X 1.73" in

Environmental

Operating Temperature: -45 to +85° C
Storage Temperature: -55 to +95° C
Shock: 20 G. 11ms
Vibration: 20 G. 5 to 200 MHz

Outline Drawing:





1780 MHz Cavity Bandpass Filter

ANATECH ELECTRONICS INC
RF & Microwave Filters & Products

Part Number: AB1780B716



Response Plot:

5/20/2021 11:00:25 AM

