

SPRING CAM LOCK



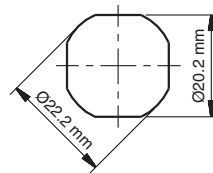
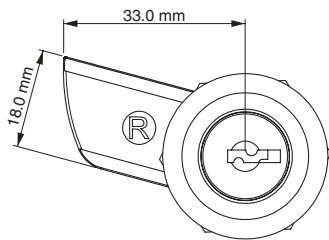
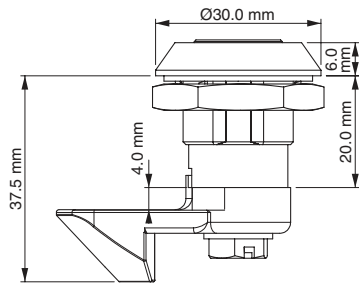
*Example with cam. Cam sold separately.

Specifications

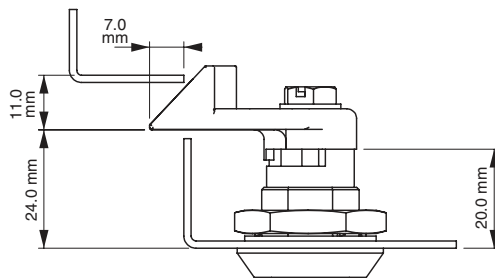
- Material:
 Housing: Zinc Alloy (Zamak) DIN-EN 1774-ZnAl4Cu1
 Cylinder: Zinc Alloy (Zamak) DIN-EN 1774-ZnAl4Cu1
 Cam: Steel
 Gasket: Rubber

Features

- Spring-loaded cam provides depress-to-lock action
- Distance between inside of lock face and front of cam fixed at 24 mm
- There is no IP 65 version of this lock, due to spring loaded cam
- Applications: Electric panels, machinery covers



Cut Out



Item Number		Driver	Hand
Zinc Alloy / Chrome	Zinc Alloy / Black		
1631101001	1631201001	Keyed Alike	Right
1631101002	1631201002	Keyed Alike	Left