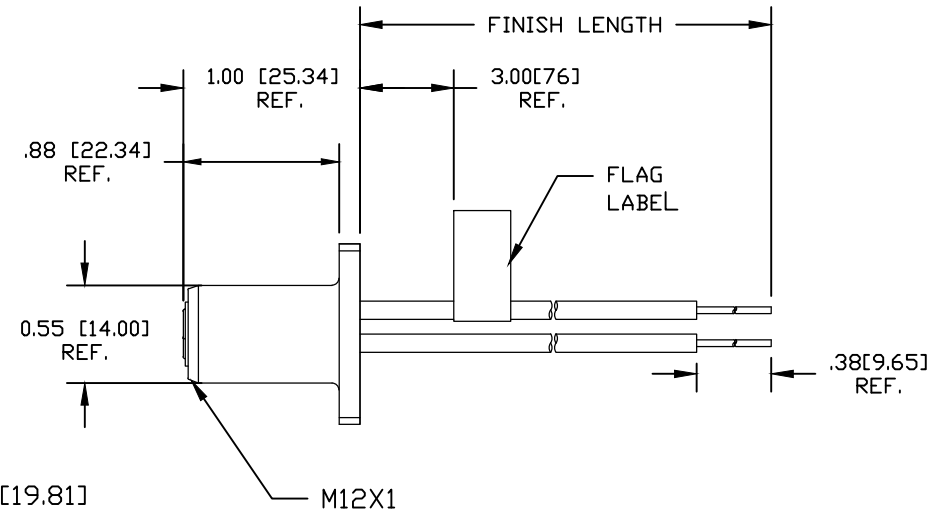
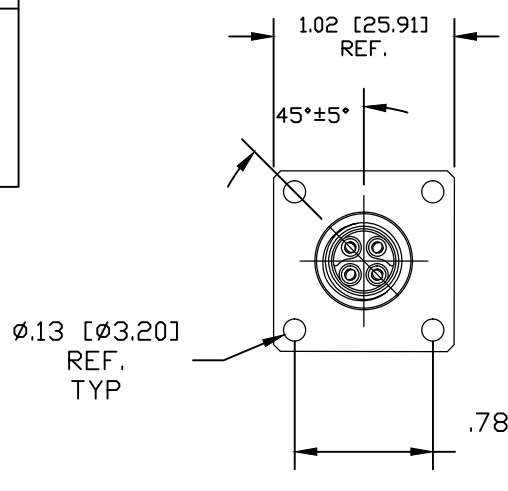


- 1 GRAY
- 2 BROWN
- 3 BLUE
- 4 BLACK



Ⓓ FRP4U36F01M0103

Wire type
14/1C AWG PPE

wire length
M005 = 0.5 Meter
M010 = 1 Meter
M100 = 10 Meter

MECHANICAL
CONTACT: GOLD/NICKEL OVER COPPER ALLOY
INSERT: BLACK NYLON
O-RING: VITON
RECEPTACLE SHELL: NICKEL PLATED BRASS
WIRE: 14 AWG CONDUCTORS, PPE

WIRE MARKING: xxxxx ECDWIRE TM 14 AWG Exxxxxx
RU AWM 11028 105C 600V VW-1 ---
CRU AWM I A/B 105C 600V FT1 CE ROHS

ELECTRICAL
VOLTAGE RATING: 300V AC/DC
AMPERAGE: 16A

ENVIRONMENTAL
PROTECTION: IP67

OPERATING TEMP: -20°C TO 105°C

UPDATE MATRIX NUMBER EC NO: IPG2017-0883 DRWN: MZIELINS 2017/03/20 CHKD: TWOLDEGE2017/03/22 APPR: BWOODMAN 2013/12/17 REV	QUALITY SYMBOLS	GENERAL TOLERANCES (UNLESS SPECIFIED)		DIMENSION STYLE	SCALE	DESIGN UNITS	THIRD ANGLE PROJECTION	
	$\nabla=0$ $\nabla C=0$	mm	INCH	MM/INCH	1:1	INCH		
		4 PLACES ±---	±---	DRAWN BY DATE	TITLE			
		3 PLACES ±---	±.005	TWOLDEGE 2013/04/24	M12-POWER ASSEMBLY			
	2 PLACES ±.13	±.010	CHECKED BY DATE	4-POLE FEMALE F-CODE REC				
	1 PLACE ±.25	±.020	BRUPERT ---	14/1C AWG PPE WIRE LEADS				
	ANGULAR ±5°		APPROVED BY DATE	MOLEX INCORPORATED				
	DRAFT WHERE APPLICABLE MUST REMAIN WITHIN DIMENSIONS		BWOODMAN 2013/12/17	DOCUMENT NO.		SHEET NO.		
			MATERIAL NO.	SD-120502-002		1 OF 1		
			SIZE	THIS DRAWING CONTAINS INFORMATION THAT IS PROPRIETARY TO MOLEX INCORPORATED AND SHOULD NOT BE USED WITHOUT WRITTEN PERMISSION				
			A					