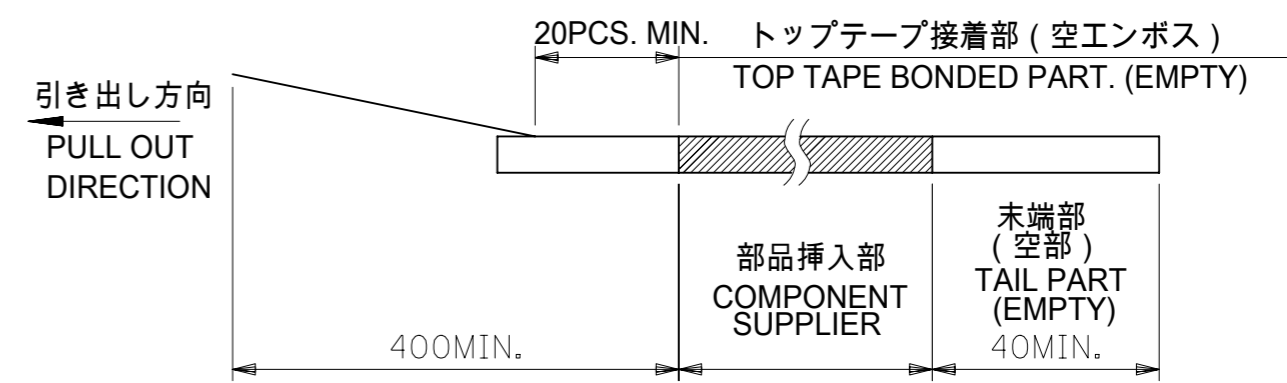


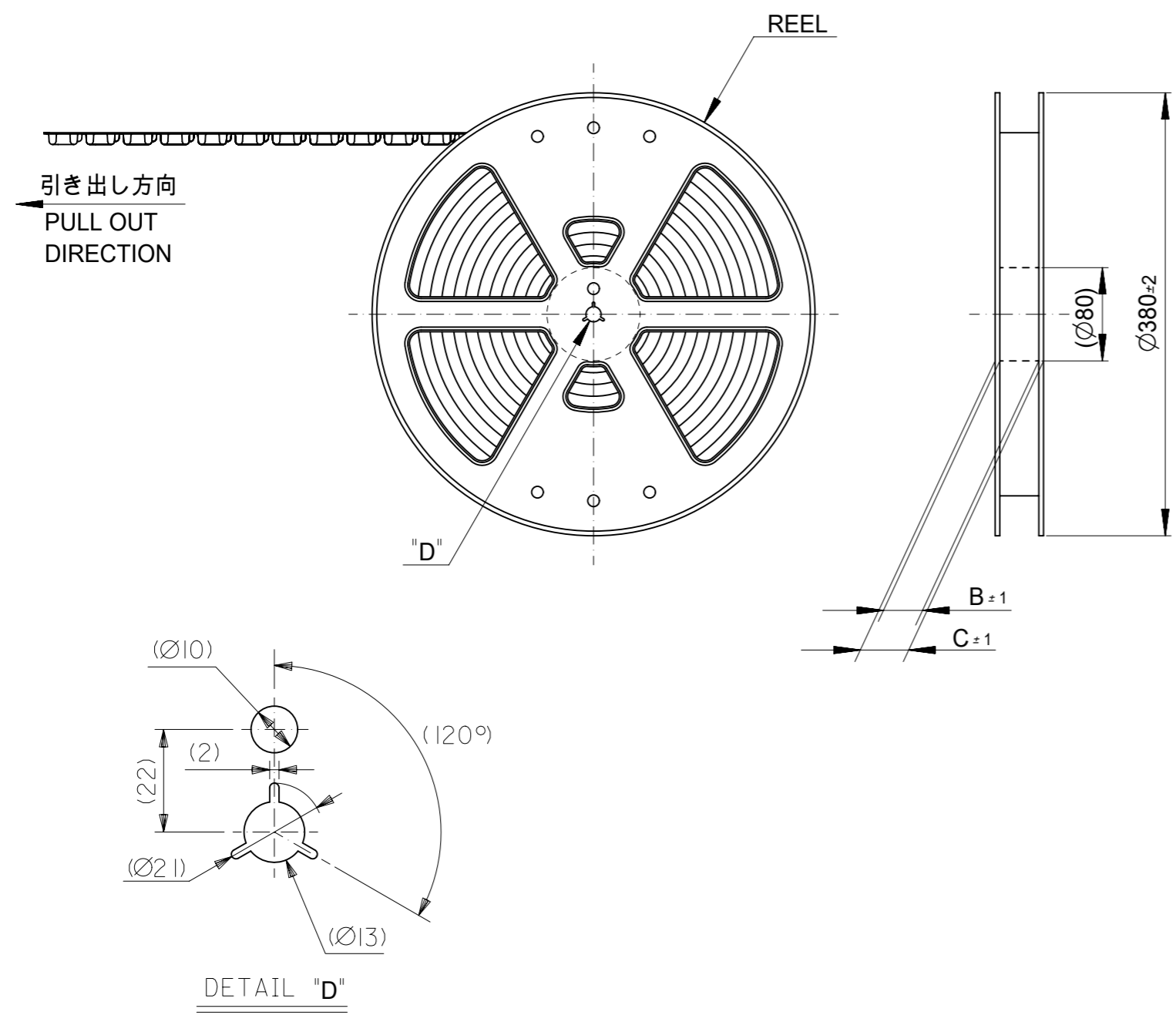
10極以下に適応  
FOR 10 CIRCUIT SIZE OR LESS

注記 NOTES

- 製品詳細寸法については製品単体図面を参照下さい。  
FOR DETAIL OF CONNECTOR DIMENSIONS,  
PLEASE SEE THE DRAWING OF CONNECTOR ITSELF (NOT PACKAGED).
- 梱包数量：7000個 / リール  
NUMBER OF CONNECTORS : 7000PCS/REEL
- リードテープ長さ LEAD TAPE LENGTH



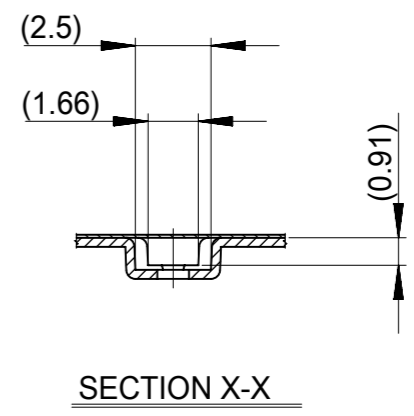
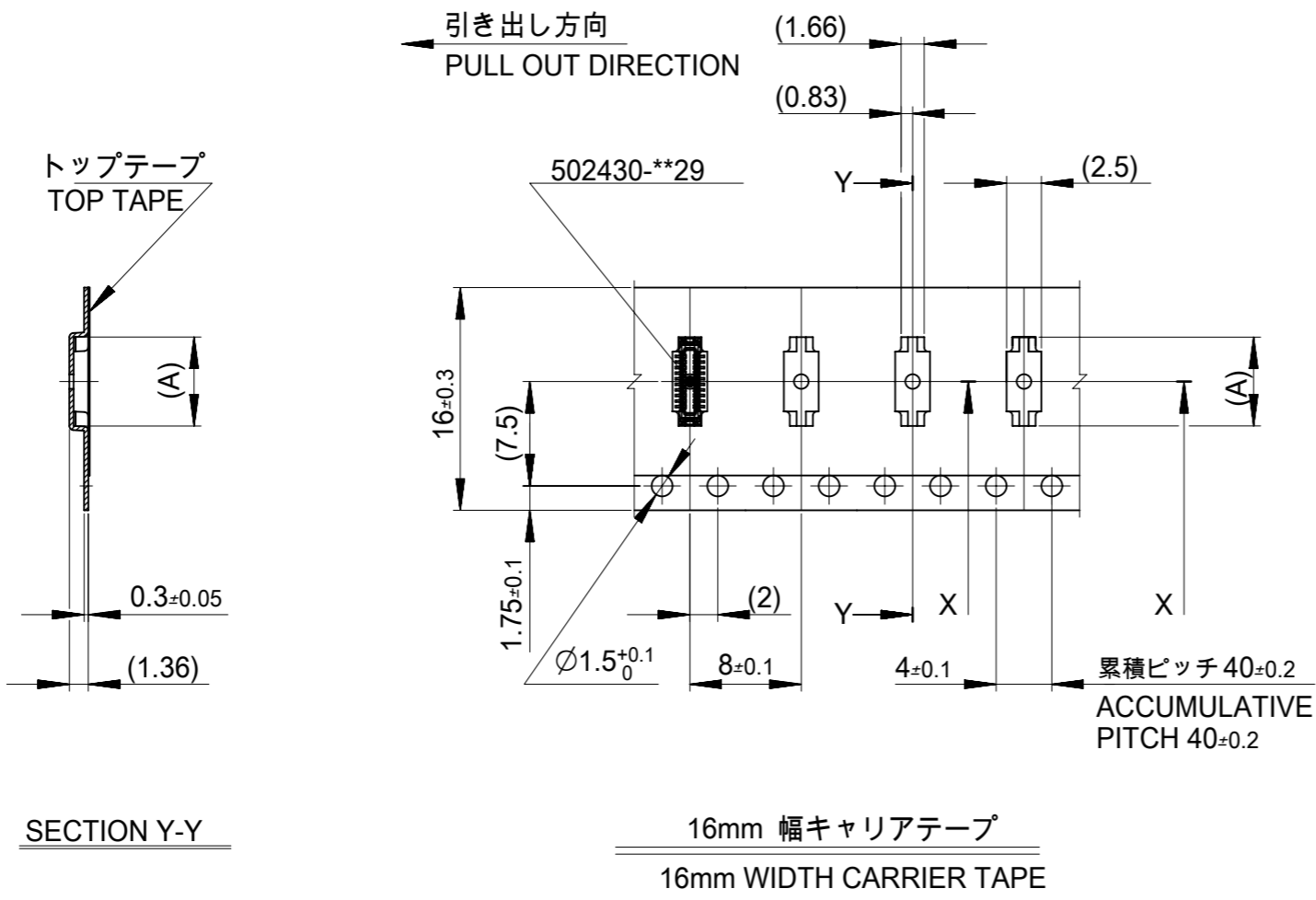
- 材料 MATERIAL  
キャリアテープ (CARRIER TAPE) : ポリスチレン (POLYSTYRENE)  
トップテープ (TOP TAPE) : PET, OTHER  
リール (REEL) : ポリスチレン (PS)<リサイクル材を含む>  
POLYSTYRENE (PS) <RECYCLE MATERIAL CONTAINED>
- ELV及び RoHS 適合品  
ELV AND RoHS COMPLIANT
- 14極以上については、Doc. 5024300001を参照願います。  
FOR 14 CIRCUIT SIZE OR OVER, REFER TO DOC. #5024300001.



MODEL NO. 502430\*\*22

THIS DRAWING CONTAINS INFORMATION THAT IS PROPRIETARY TO MOLEX ELECTRONIC TECHNOLOGIES, LLC AND SHOULD NOT BE USED WITHOUT WRITTEN PERMISSION		CURRENT REV DESC: REVISED		<b>molex</b>	
DIMENSION UNITS	SCALE				
mm	NTS			PRODUCT CUSTOMER DRAWING	
GENERAL TOLERANCES (UNLESS SPECIFIED)		EC NO: 639809		DOCUMENT NUMBER	
ANGULAR TOL	± 3.0°	DRWN: SCV 2020/06/22		5024300000	
4 PLACES	± 0.03	CHK'D: HSHIMUYAMA 2020/07/02		DOC TYPE	DOC PART
3 PLACES	± 0.03	APPR: SHOSHIKAWA 2020/07/02		PSD	000
2 PLACES	± 0.05	INITIAL REVISION:		REVISION	C
1 PLACE	± 0.1	DRWN: YSHIBATA 2017/01/16			
0 PLACES	± 0.2	APPR: MSASAO 2017/01/19			
DRAFT WHERE APPLICABLE MUST REMAIN WITHIN DIMENSIONS		THIRD ANGLE PROJECTION	DRAWING	SERIES	MATERIAL NUMBER
			A3-SIZE	502430	SEE SHEET 2
				CUSTOMER	SHEET NUMBER
				GENERAL	1 OF 2

10極以下に適応  
FOR 10 CIRCUIT SIZE OR LESS



16	21.4	17.4	3.98	502430-0822	8
キャリアテープ幅 CARRIER TAPE WIDTH			C	B	(A)
				MATERIAL No.	CKT.
				MODEL No.	502430-**-22

THIS DRAWING CONTAINS INFORMATION THAT IS PROPRIETARY TO MOLEX ELECTRONIC TECHNOLOGIES, LLC AND SHOULD NOT BE USED WITHOUT WRITTEN PERMISSION

DIMENSION UNITS: mm SCALE: NTS

GENERAL TOLERANCES (UNLESS SPECIFIED)

ANGULAR TOL	± 3.0 °
4 PLACES	± 0.03
3 PLACES	± 0.03
2 PLACES	± 0.05
1 PLACE	± 0.1
0 PLACES	± 0.2

EC NO: 639809  
DRWN: SCV 2020/06/22  
CHK'D: HSHIMOYAMA 2020/07/02  
APPR: SHOSHIKAWA 2020/07/02

INITIAL REVISION:  
DRWN: YSHIBATA 2017/01/16  
APPR: MSASAO 2017/01/19

THIRD ANGLE PROJECTION

DRAWING: A3-SIZE

SERIES: 502430

MATERIAL NUMBER: SEE TABLE

CUSTOMER: GENERAL

SHEET NUMBER: 2 OF 2

DOCUMENT NUMBER: 5024300000

DOC TYPE: PSD

DOC PART: 000

REVISION: C

**molex**

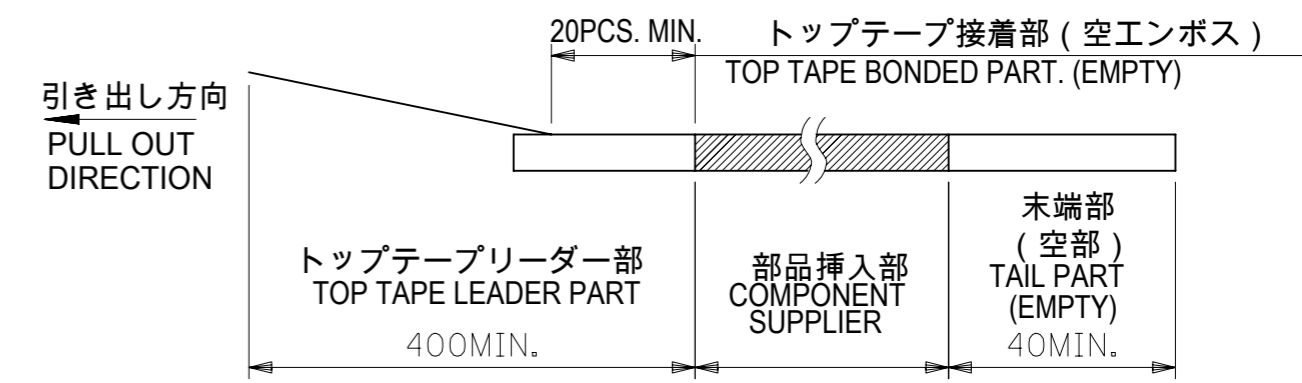
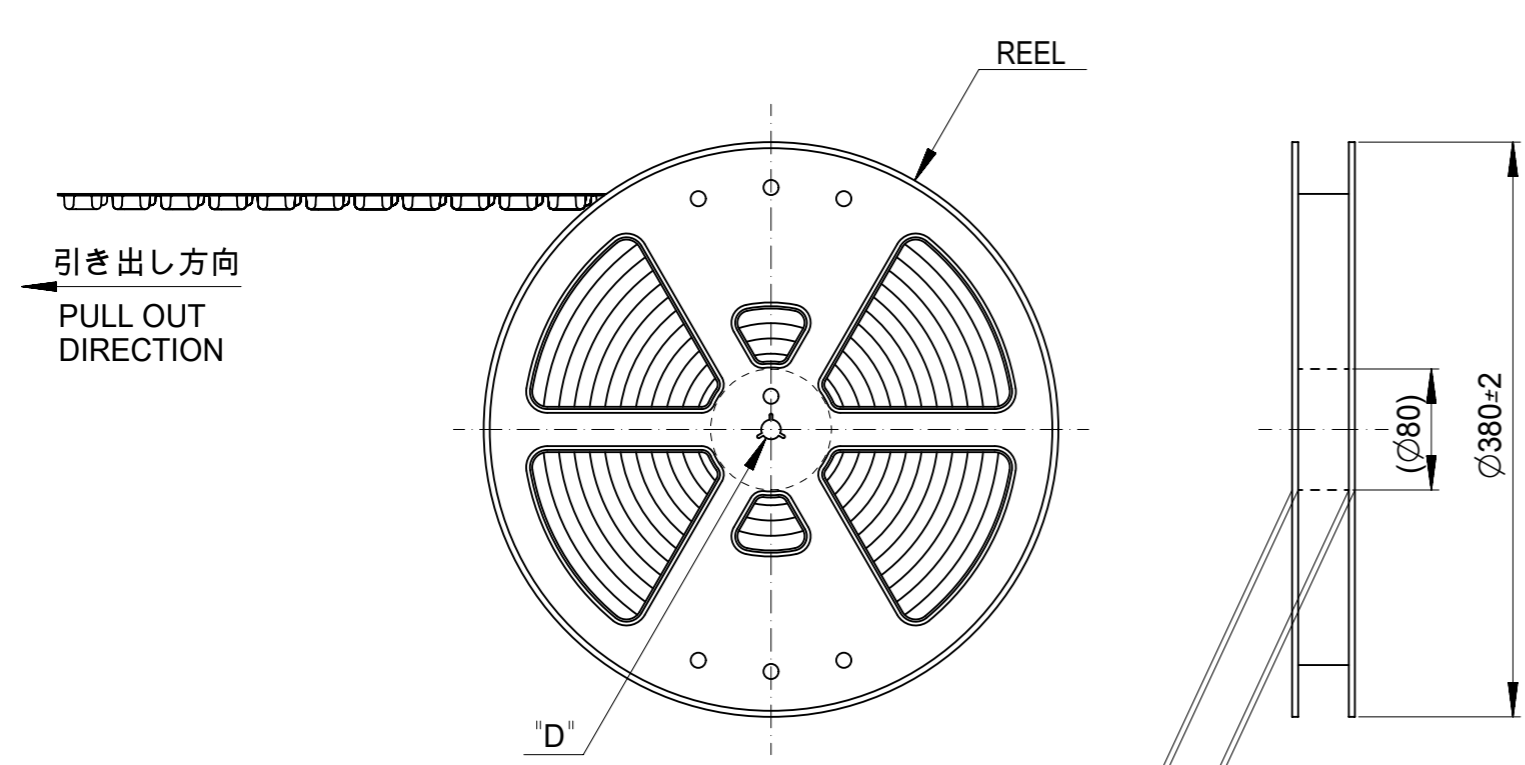
0.4 B-TO-B CONN. HGT=1.0  
HRF PLUG ASSY EMBSTP PKG

PRODUCT CUSTOMER DRAWING

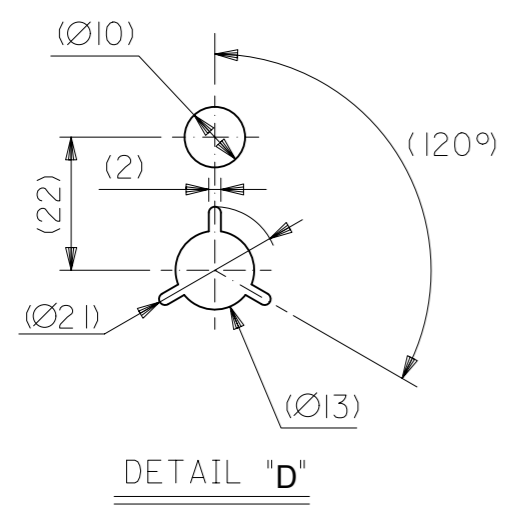
14極以上に適応  
FOR 14 CIRCUIT SIZE OR OVER

注記 NOTES

- 製品詳細寸法については製品単体図面を参照下さい。  
FOR DETAIL OF CONNECTOR DIMENSIONS,  
PLEASE SEE THE DRAWING OF CONNECTOR ITSELF (NOT PACKAGED).
- 梱包数量 : 7000個 / リール  
NUMBER OF CONNECTORS : 7000PCS/REEL
- リードテープ長さ LEAD TAPE LENGTH



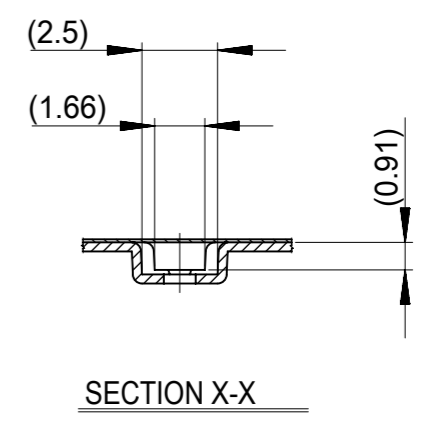
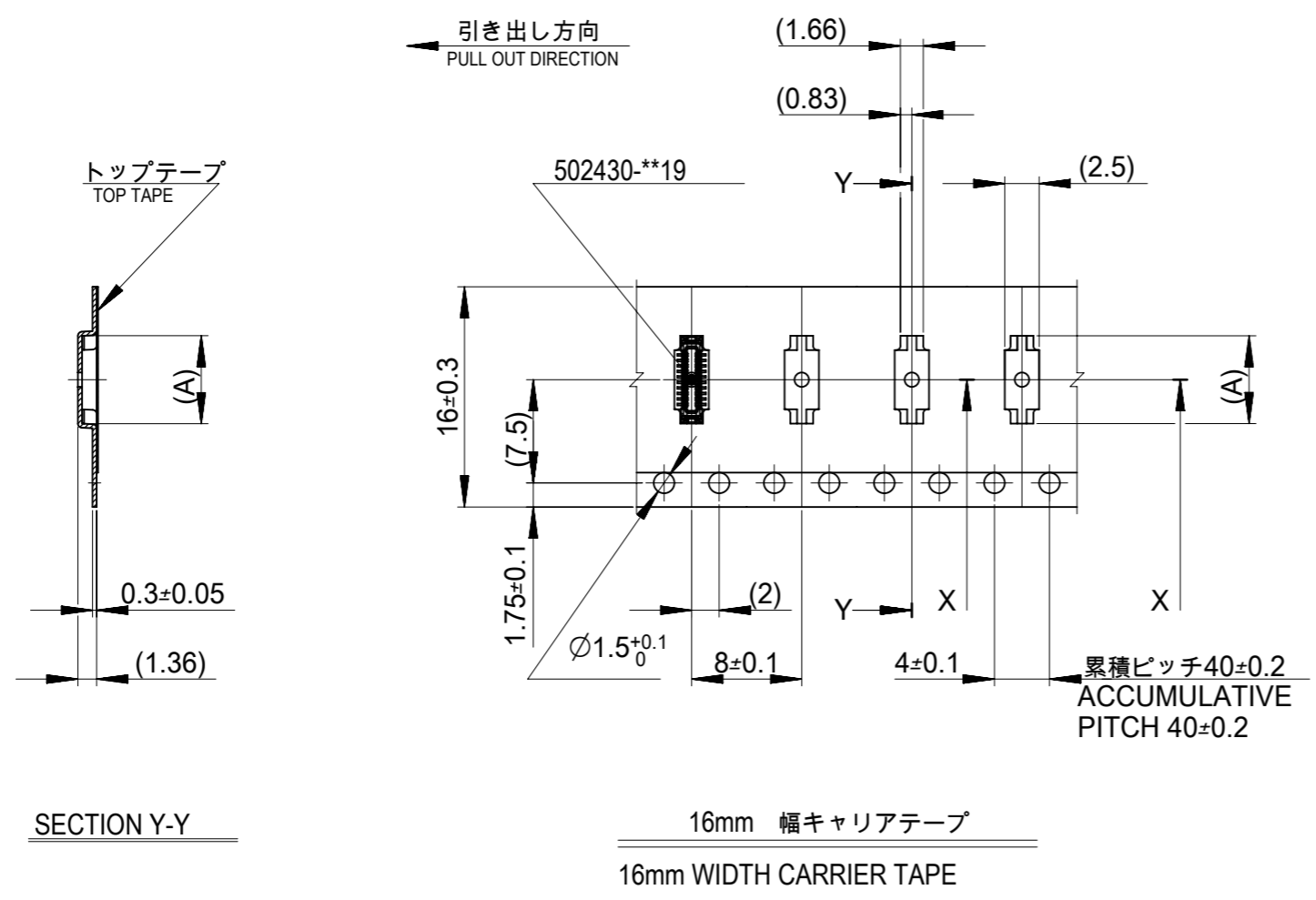
- 材料 MATERIAL  
キャリアテープ (CARRIER TAPE) : ポリスチレン (POLYSTYRENE)  
トップテープ (TOP TAPE) : PET, OTHER  
リール (REEL) : ポリスチレン (PS) <リサイクル材を含む>  
POLYSTYRENE (PS) <RECYCLE MATERIAL CONTAINED>
- ELV及びRoHS適合品  
ELV AND RoHS COMPLIANT
- 10極以下については、Doc. 5024300000を参照願います。  
FOR 10 CIRCUIT SIZE OR LESS, REFER TO DOC. #5024300000.



MODEL NO. 502430-\*\*12

THIS DRAWING CONTAINS INFORMATION THAT IS PROPRIETARY TO MOLEX ELECTRONIC TECHNOLOGIES, LLC AND SHOULD NOT BE USED WITHOUT WRITTEN PERMISSION		CURRENT REV DESC: REVISED		<b>molex</b>	
DIMENSION UNITS	SCALE				
mm	NTS			PRODUCT CUSTOMER DRAWING	
GENERAL TOLERANCES (UNLESS SPECIFIED)		EC NO: 639809		DOCUMENT NUMBER	
ANGULAR TOL	$\pm 3.0^\circ$	DRWN: SCV 2020/06/18		5024300001	
4 PLACES	$\pm 0.03$	CHK'D: HSHIMOYAMA 2020/07/02		DOC TYPE DOC PART REVISION	
3 PLACES	$\pm 0.03$	APPR: SHOSHIKAWA 2020/07/02		PSD 000 D	
2 PLACES	$\pm 0.05$	INITIAL REVISION:		MATERIAL NUMBER	
1 PLACE	$\pm 0.1$	DRWN: YSHIBATA 2017/01/16		CUSTOMER	
0 PLACES	$\pm 0.2$	APPR: MSASAO 2017/02/21		GENERAL	
DRAFT WHERE APPLICABLE MUST REMAIN WITHIN DIMENSIONS		THIRD ANGLE PROJECTION	DRAWING	SERIES	SHEET NUMBER
			A3-SIZE	502430	1 OF 5

14極以上に適応  
FOR 14 CIRCUIT SIZE OR OVER

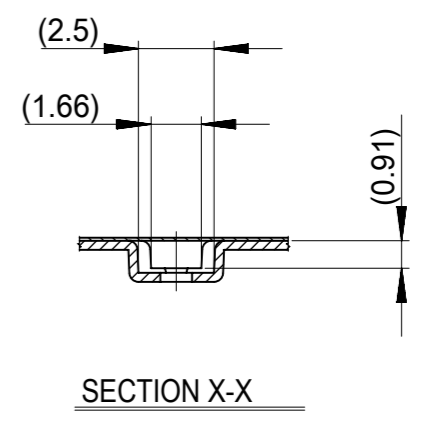
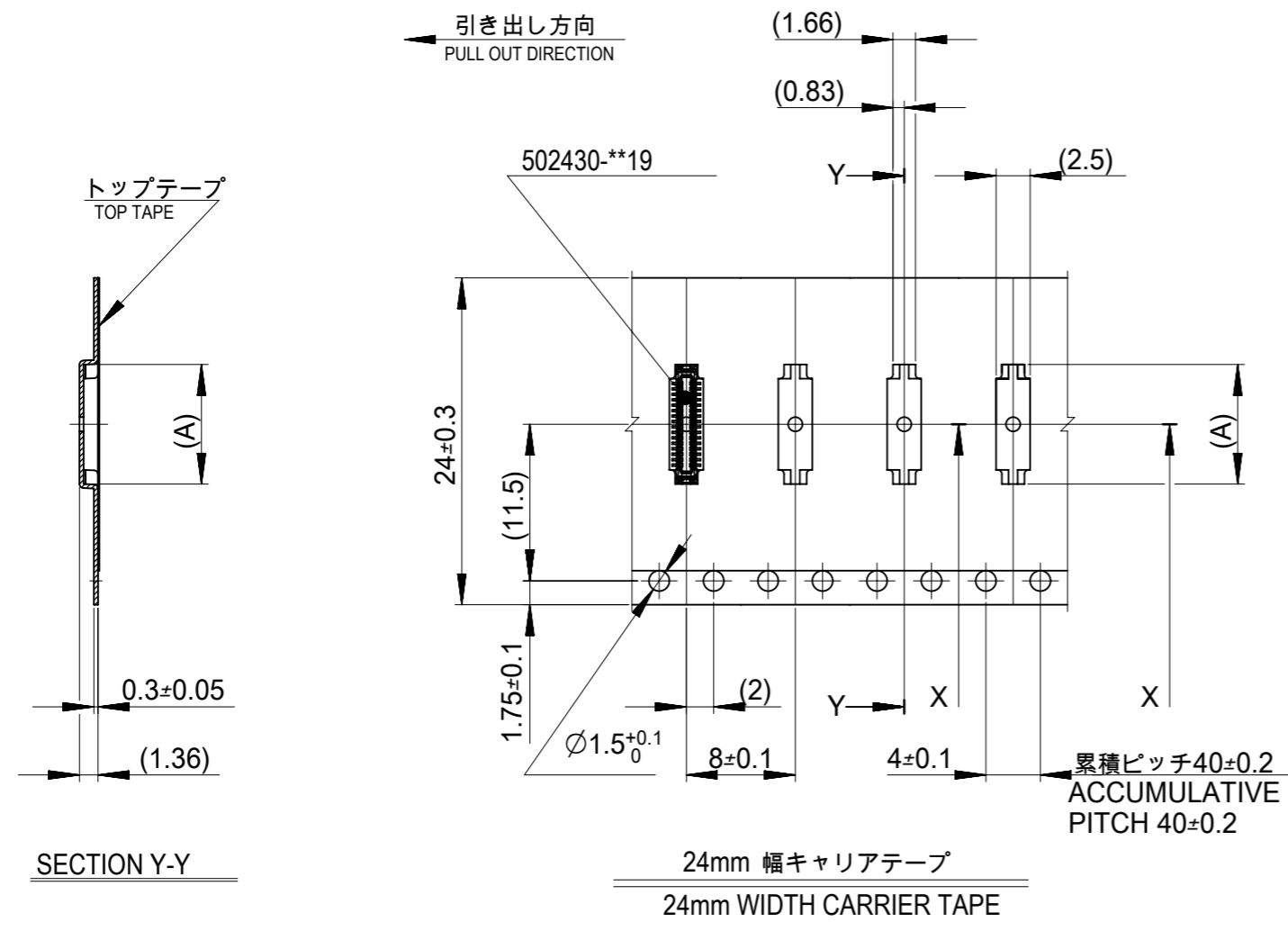


16	21.4	17.4	7.58	502430-2612	26
			7.18	502430-2412	24
			6.78	502430-2212	22
			6.38	502430-2012	20
			5.18	502430-1412	14
キャリアテープ幅 CARRIER TAPE WIDTH			C	B	(A)
			MATERIAL No.		CKT.
			MODEL No.	502430-**12	

THIS DRAWING CONTAINS INFORMATION THAT IS PROPRIETARY TO MOLEX ELECTRONIC TECHNOLOGIES, LLC AND SHOULD NOT BE USED WITHOUT WRITTEN PERMISSION

DIMENSION UNITS	SCALE	CURRENT REV DESC: REVISED			
mm	NTS	<p>0.4 B-TO-B CONN. HGT=1.0 PLUG ASSY EMBSTP PKG</p> <p>PRODUCT CUSTOMER DRAWING</p>			
GENERAL TOLERANCES (UNLESS SPECIFIED)					
ANGULAR TOL	± 3.0°				
4 PLACES	± 0.03				
3 PLACES	± 0.03				
2 PLACES	± 0.05				
1 PLACE	± 0.1	EC NO: 639809	2020/06/18	DOCUMENT NUMBER	DOC TYPE
0 PLACES	± 0.2	DRWN: SCV	2020/07/02	5024300001	PSD
DRAFT WHERE APPLICABLE MUST REMAIN WITHIN DIMENSIONS		CHK'D: HSHIMOMYAMA	2020/07/02	DOC PART	000
THIRD ANGLE PROJECTION		APPR: SHOSHIKAWA	2020/07/02	REVISION	D
DRAWING		INITIAL REVISION:	2017/01/16	SHEET NUMBER	
A3-SIZE		DRWN: YSHIBATA	2017/02/21	2 OF 5	
SERIES		APPR: MSASAO		MATERIAL NUMBER	
502430				CUSTOMER	
SEE TABLE				GENERAL	

14極以上に適応  
FOR 14 CIRCUIT SIZE OR OVER

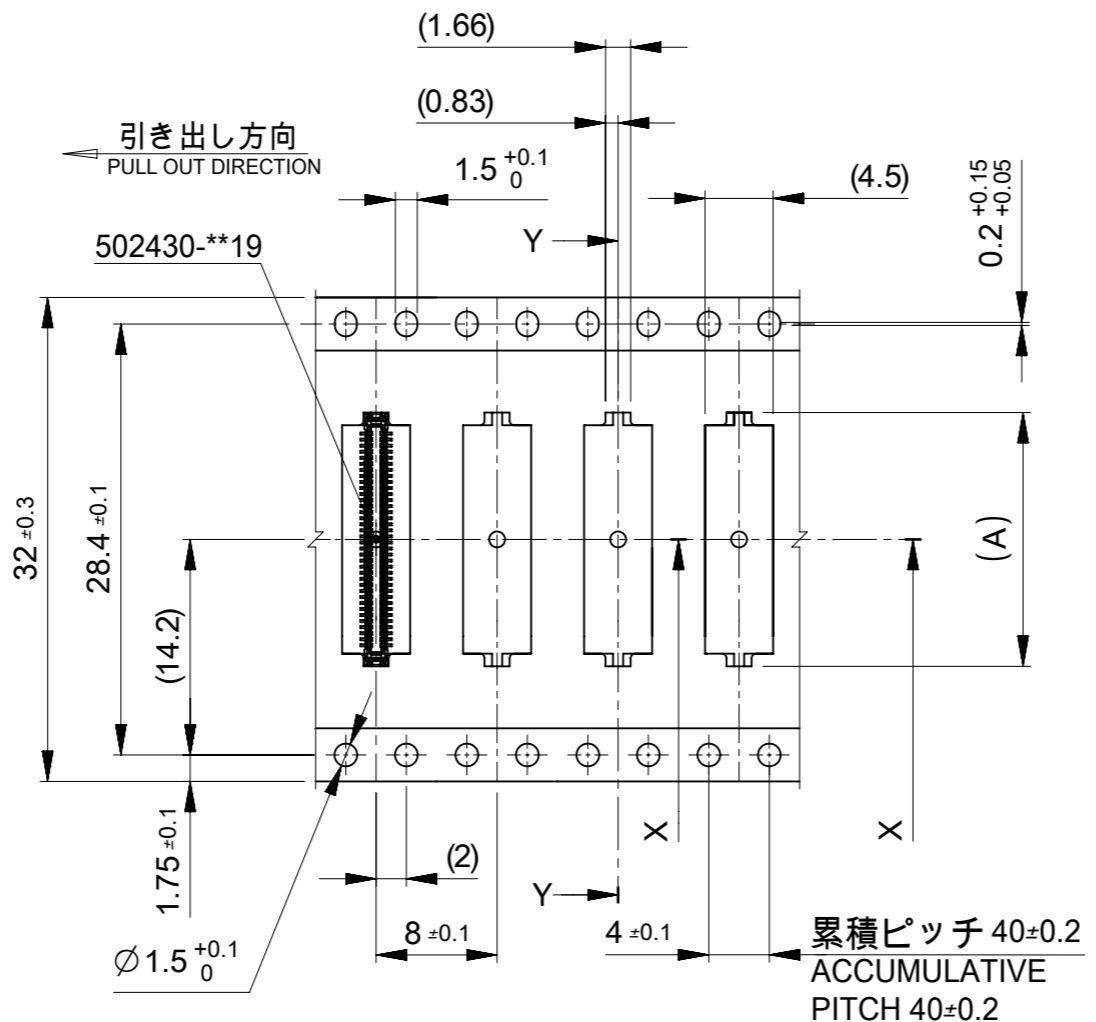
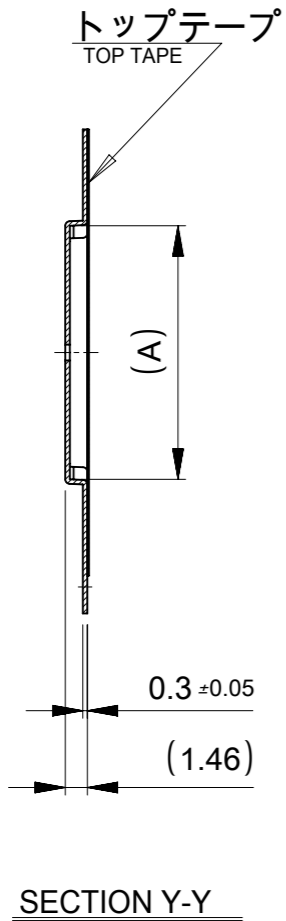


24	29.4	25.4	15.18	502430-6412	64
			14.38	502430-6012	60
			12.38	502430-5012	50
			11.18	502430-4412	44
			10.38	502430-4012	40
			9.18	502430-3412	34
			8.78	502430-3212	32
			8.38	502430-3012	30
キャリアテープ幅 CARRIER TAPE WIDTH			C	B	(A)
			MATERIAL No.		CKT.
			MODEL No.	502430-**12	

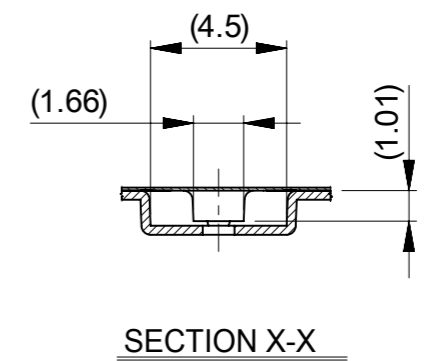
THIS DRAWING CONTAINS INFORMATION THAT IS PROPRIETARY TO MOLEX ELECTRONIC TECHNOLOGIES, LLC AND SHOULD NOT BE USED WITHOUT WRITTEN PERMISSION

DIMENSION UNITS	SCALE	CURRENT REV DESC: REVISED			
mm	NTS	<p>0.4 B-TO-B CONN. HGT=1.0 PLUG ASSY EMBSTP PKG</p> <p>PRODUCT CUSTOMER DRAWING</p>			
GENERAL TOLERANCES (UNLESS SPECIFIED)					
ANGULAR TOL	± 3.0°				
4 PLACES	± 0.03				
3 PLACES	± 0.03				
2 PLACES	± 0.05				
1 PLACE	± 0.1	EC NO: 639809	2020/06/18	DOCUMENT NUMBER	DOC TYPE
0 PLACES	± 0.2	DRWN: SCV	2020/07/02	5024300001	PSD
DRAFT WHERE APPLICABLE MUST REMAIN WITHIN DIMENSIONS		CHK'D: HSHIMOMYAMA	2020/07/02	REVISION	000
THIRD ANGLE PROJECTION		APPR: SHOSHIKAWA	2020/07/02	000	D
DRAWING		INITIAL REVISION:	2017/01/16	SHEET NUMBER	
A3-SIZE		DRWN: YSHIBATA	2017/02/21	3 OF 5	
SERIES		APPR: MSASAO	2017/02/21		
MATERIAL NUMBER		CUSTOMER			
SEE TABLE		GENERAL			

14極以上に適応  
FOR 14 CIRCUIT SIZE OR OVER

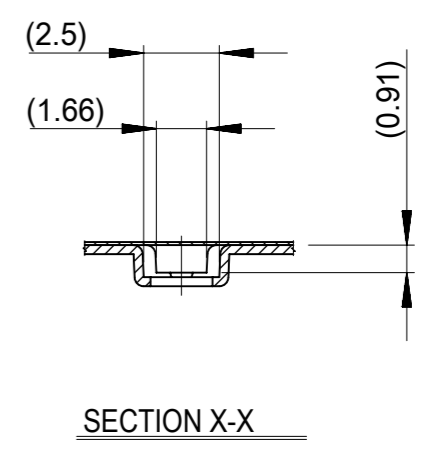
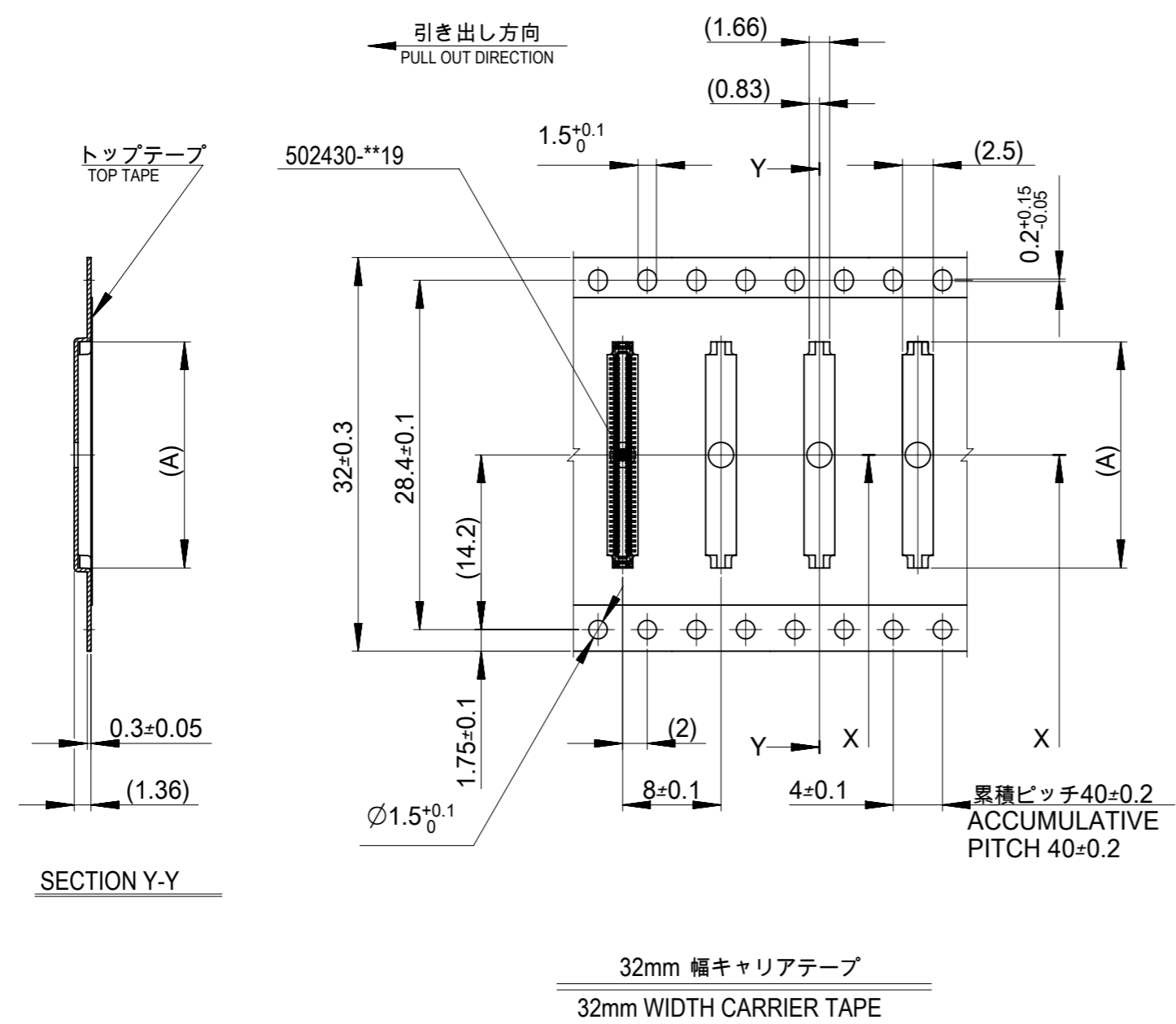


32mm 幅キャリアテープ  
32mm WIDTH CARRIER TAPE



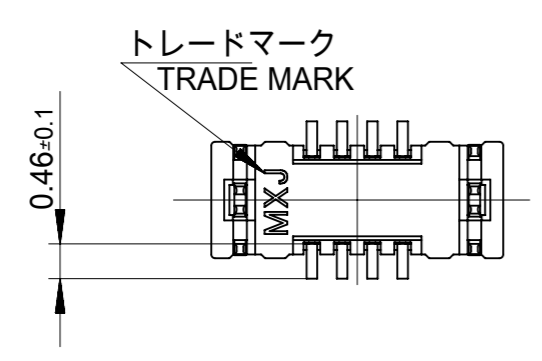
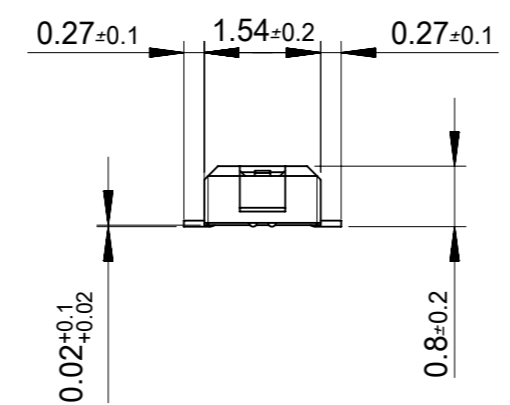
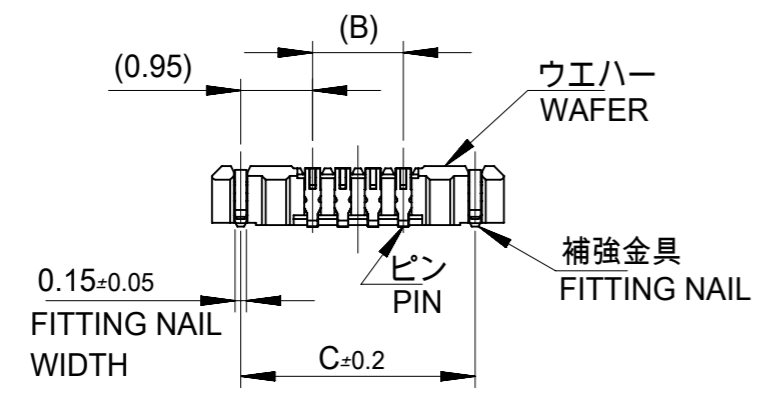
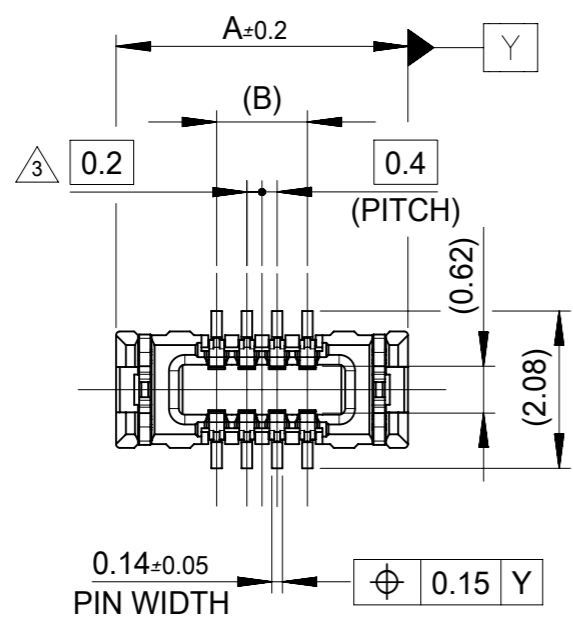
32	37.4	33.4	16.38	502430-7012	70
キャリアテープ幅 CARRIER TAPE WIDTH			C	B	(A)
			MATERIAL No.		CKT.
			MODEL No.		502430-**12
THIS DRAWING CONTAINS INFORMATION THAT IS PROPRIETARY TO MOLEX ELECTRONIC TECHNOLOGIES, LLC AND SHOULD NOT BE USED WITHOUT WRITTEN PERMISSION					
DIMENSION UNITS		SCALE		CURRENT REV DESC: REVISED	
mm		NTS			
GENERAL TOLERANCES (UNLESS SPECIFIED)					
ANGULAR TOL ± 3.0°					
4 PLACES ± 0.03					
3 PLACES ± 0.03					
2 PLACES ± 0.05					
1 PLACE ± 0.1					
0 PLACES ± 0.2					
DRAFT WHERE APPLICABLE MUST REMAIN WITHIN DIMENSIONS		THIRD ANGLE PROJECTION		DRAWING	
		A3-SIZE		SERIES	
		502430		MATERIAL NUMBER	
		SEE TABLE		CUSTOMER	
		GENERAL		SHEET NUMBER	
		4 OF 5		DOCUMENT NUMBER	
		5024300001		DOC TYPE	
		PSD		DOC PART	
		000		REVISION	
		D			

14極以上に適応  
FOR 14 CIRCUIT SIZE OR OVER



32	37.4	33.4	18.38	502430-8012	80
キャリアテープ幅 CARRIER TAPE WIDTH			C	B	(A)
			MATERIAL No.		CKT.
			MODEL No.		502430-**12
THIS DRAWING CONTAINS INFORMATION THAT IS PROPRIETARY TO MOLEX ELECTRONIC TECHNOLOGIES, LLC AND SHOULD NOT BE USED WITHOUT WRITTEN PERMISSION					
DIMENSION UNITS	SCALE	CURRENT REV DESC: REVISED			
mm	NTS	<p>0.4 B-TO-B CONN. HGT=1.0 PLUG ASSY EMBSTP PKG</p> <p>PRODUCT CUSTOMER DRAWING</p>			
GENERAL TOLERANCES (UNLESS SPECIFIED)					
ANGULAR TOL	± 3.0 °				
4 PLACES	± 0.03				
3 PLACES	± 0.03				
2 PLACES	± 0.05				
1 PLACE	± 0.1	EC NO: 639809		2020/06/18	
0 PLACES	± 0.2	DRWN: SCV		2020/07/02	
		CHK'D: HSHIMOYAMA		2020/07/02	
		APPR: SHOSHIKAWA		2020/07/02	
		INITIAL REVISION:		DOCUMENT NUMBER	
		DRWN: YSHIBATA		5024300001	
		APPR: MSASAO		PSD 000 D	
DRAFT WHERE APPLICABLE MUST REMAIN WITHIN DIMENSIONS		THIRD ANGLE PROJECTION	DRAWING	SERIES	MATERIAL NUMBER
			A3-SIZE	502430	SEE TABLE
			CUSTOMER	GENERAL	SHEET NUMBER
					5 OF 5

10極以下に適応  
FOR 10 CIRCUIT SIZE OR LESS

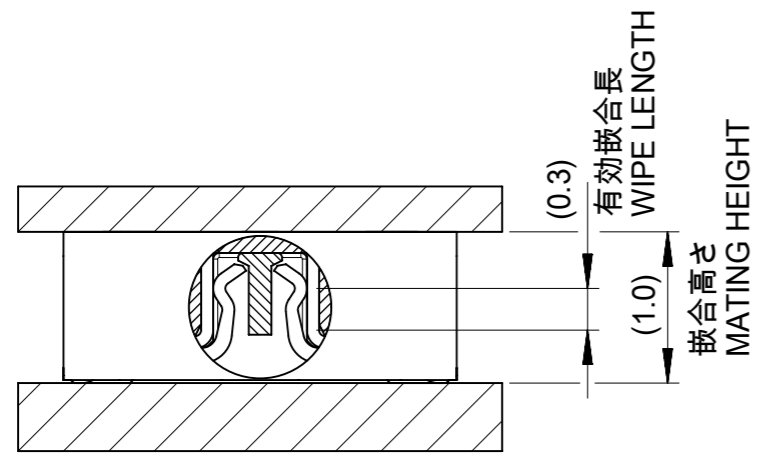


3.1	1.2	3.86	502430-0822	8
C	B	A	EMBOSSED PACKAGE オーダー番号 ORDER No.	極数 CIRCUITS

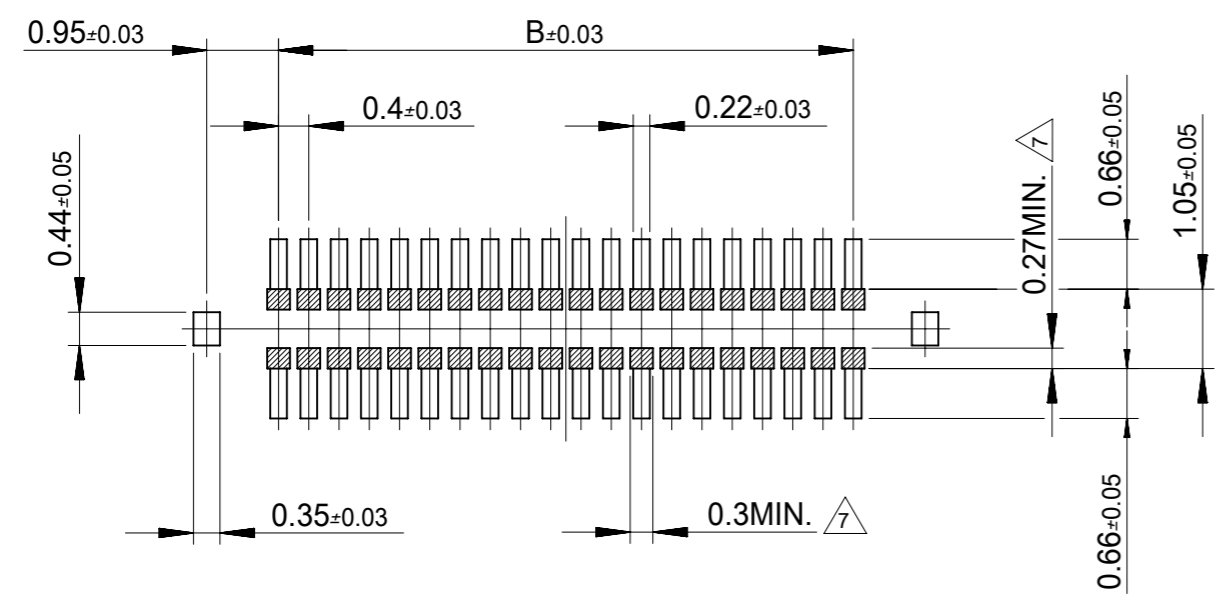
CONNECTOR SERIES No. 502430-\*\*29

THIS DRAWING CONTAINS INFORMATION THAT IS PROPRIETARY TO MOLEX ELECTRONIC TECHNOLOGIES, LLC AND SHOULD NOT BE USED WITHOUT WRITTEN PERMISSION				
DIMENSION UNITS mm	SCALE 10:1	CURRENT REV DESC: REVISED		
GENERAL TOLERANCES (UNLESS SPECIFIED)		<b>molex</b>		
ANGULAR TOL	± 3.0°			
4 PLACES	± 0.03	0.4 B-TO-B CONN. HGT=1.0 W=2.6 PLUG ASSY		
3 PLACES	± 0.03	PRODUCT CUSTOMER DRAWING		
2 PLACES	± 0.05	DOCUMENT NUMBER		
1 PLACE	± 0.1	5024301000		
0 PLACES	± 0.2	DOC TYPE DOC PART REVISION		
DRAFT WHERE APPLICABLE MUST REMAIN WITHIN DIMENSIONS		THIRD ANGLE PROJECTION	DRAWING A3-SIZE	SHEET NUMBER 1 OF 2





嵌合断面図 (参考)  
MATED DRAWING (REFERENCE)



P.C. BOARD PATTERN LAYOUT  
(REFERENCE)

注記 NOTES

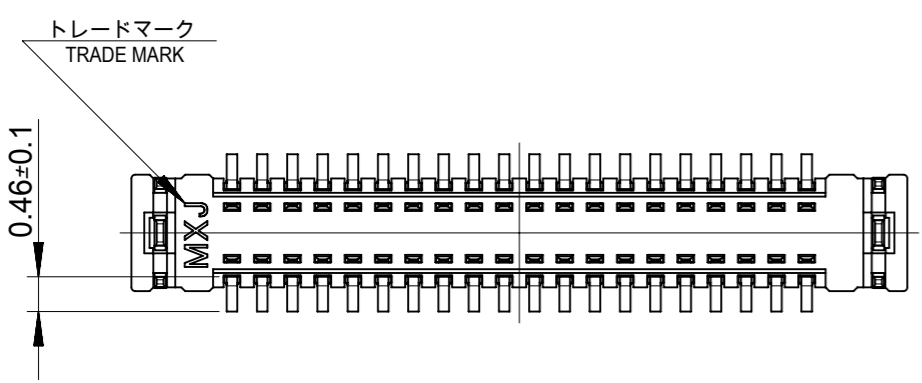
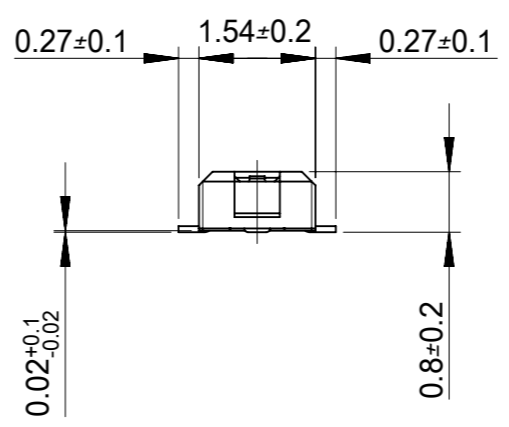
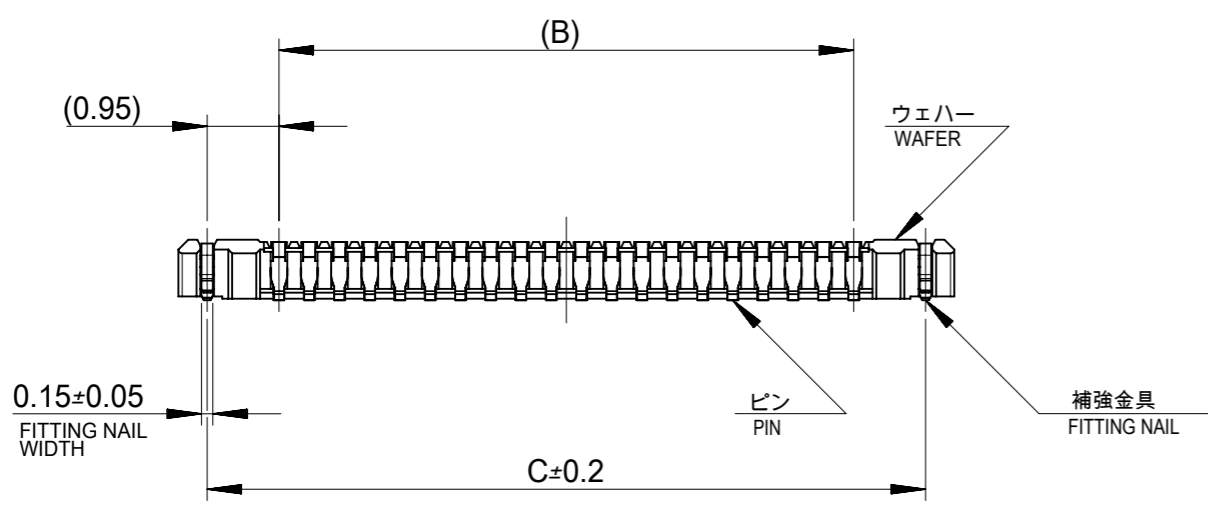
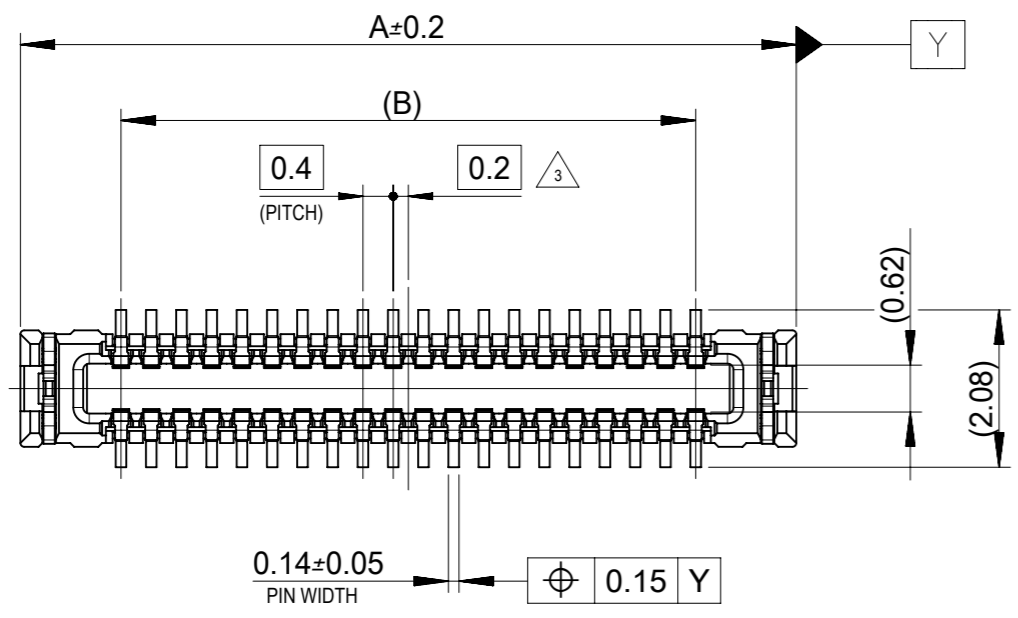
1. 使用材料 MATERIAL  
 ウェハー : 液晶ポリマー (LCP) ガラス充填 UL94V-0 (黒)  
 WAFER: LIQUID CRYSTAL POLYMER (GLASS FILLED) UL94V-0 (COLOR: BLACK)  
 ピン : リン青銅 (t=0.08)  
 PIN : PHOSPHOR BRONZE (t=0.08)  
 金具 : リン青銅 (t=0.15)  
 FITTING NAIL : PHOSPHOR BRONZE (t=0.15)
2. メッキ仕様 PLATING  
 ピン PIN  
 金メッキ 0.1マイクロメートル以上  
 GOLD 0.1MICROMETER MINIMUM  
 下地メッキ : ニッケルメッキ 1.0マイクロメートル以上  
 UNDER PLATING : NICKEL 1.0MICROMETER MINIMUM  
 ※コンタクト部とテール部はニッケルメッキによって分断されている金メッキです。  
 DIVIDE INTO PARTS THE GOLD PLATING OF THE CONTACT AND THE TAIL PART BY THE NICKEL PLATING.  
 金具 FITTING NAIL  
 フラッシュ金メッキ  
 FLASH Au PLATING  
 下地メッキ : ニッケルメッキ 1.0マイクロメートル以上  
 UNDER PLATING : NICKEL 1.0MICROMETER MINIMUM

- 3 (全極数 / 2) = 偶数の場合に適用。  
 APPLY FOR (CIRCUIT/2)=EVEN.
4. 嵌合相手 : 502426シリーズ  
 MATE WITH : 502426 SERIES.
5. テール平坦度は、0.08以下  
 テール及び金具の平坦度は、0.1以下  
 TAIL COPLANARITY TO BE 0.08MAXIMUM.  
 TAIL AND FITTING NAIL COPLANARITY TO BE 0.1MAXIMUM.
6. ELV 及び RoHS適合品  
 ELV AND RoHS COMPLIANT.
- 7 斜線部はパターン書込み禁止範囲と半田禁止範囲を示す。  
 ただし、斜線部に同一配線を配置する場合はレジストを施し、この部分に半田は無きこと。  
 NO PATTERN CIRCUIT AND NO SOLDER ALLOWED IN THE SHADED AREA.  
 HOWEVER, IF NEEDED TO ADD A TRACE OF THE SAME CIRCUIT, PUT THE SOLDER-RESIST,  
 YET NO SOLDER ALLOWED IN THE AREA.
8. 14極以上については、Doc. 5024301001を参照願います。  
 FOR 14 CIRCUIT SIZE OR OVER, REFER TO DOC. #5024301001.

10極以下に適応  
FOR 10 CIRCUIT SIZE OR LESS

THIS DRAWING CONTAINS INFORMATION THAT IS PROPRIETARY TO MOLEX ELECTRONIC TECHNOLOGIES, LLC AND SHOULD NOT BE USED WITHOUT WRITTEN PERMISSION		CURRENT REV DESC: REVISED		<b>molex</b>		
DIMENSION UNITS	SCALE					0.4 B-TO-B CONN. HGT=1.0 W=2.6 PLUG ASSY
mm	10:1			PRODUCT CUSTOMER DRAWING		
GENERAL TOLERANCES (UNLESS SPECIFIED)		EC NO: 639809		DOCUMENT NUMBER		
ANGULAR TOL	± 3.0°	DRWN: SCV 2020/06/22		5024301000		
4 PLACES	± 0.03	CHK'D: HSHIMOYAMA 2020/07/02		DOC TYPE DOC PART REVISION		
3 PLACES	± 0.03	APPR: SHOSHIKAWA 2020/07/02		PSD 000 B		
2 PLACES	± 0.05	INITIAL REVISION:		MATERIAL NUMBER		
1 PLACE	± 0.1	DRWN: YSHIBATA 2017/01/16		CUSTOMER		
0 PLACES	± 0.2	APPR: MSASAO 2017/01/19		SHEET NUMBER		
DRAFT WHERE APPLICABLE MUST REMAIN WITHIN DIMENSIONS		THIRD ANGLE PROJECTION	DRAWING	SERIES	SEE SHEET 1 GENERAL 2 OF 2	
			A3-SIZE	502430		

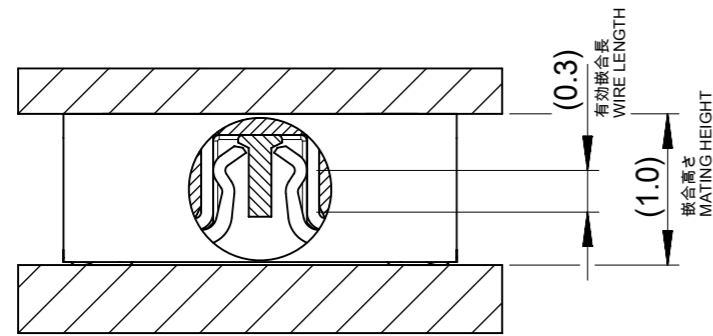
14極以上に適応  
FOR 14 CIRCUIT SIZE OR OVER



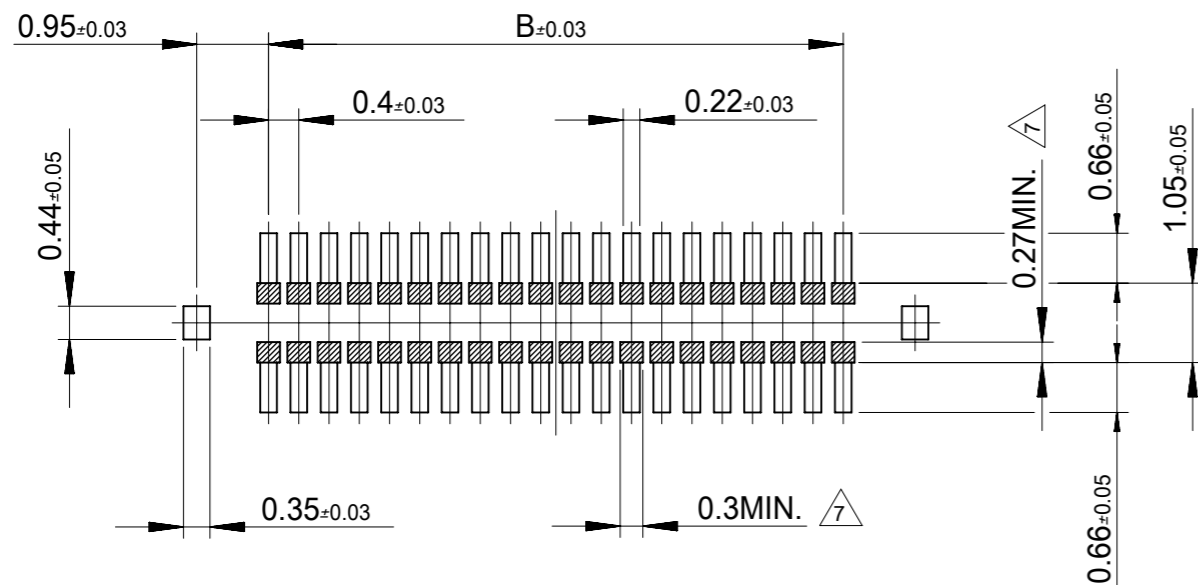
17.5	15.6	18.26	502430-8012	80
15.5	13.6	16.26	502430-7012	70
14.3	12.4	15.06	502430-6412	64
13.5	11.6	14.26	502430-6012	60
11.5	9.6	12.26	502430-5012	50
10.3	8.4	11.06	502430-4412	44
9.5	7.6	10.26	502430-4012	40
8.3	6.4	9.06	502430-3412	34
7.9	6.0	8.66	502430-3212	32
7.5	5.6	8.26	502430-3012	30
6.7	4.8	7.46	502430-2612	26
6.3	4.4	7.06	502430-2412	24
5.9	4.0	6.66	502430-2212	22
5.5	3.6	6.26	502430-2012	20
4.3	2.4	5.06	502430-1412	14
C	B	A	EMBOSSED PACKAGE オーダー番号 ORDER No.	極数 CIRCUITS

CONNECTOR SERIES No. 502430-\*\*19

THIS DRAWING CONTAINS INFORMATION THAT IS PROPRIETARY TO MOLEX ELECTRONIC TECHNOLOGIES, LLC AND SHOULD NOT BE USED WITHOUT WRITTEN PERMISSION		CURRENT REV DESC: REVISED		<b>molex</b>	
DIMENSION UNITS <b>mm</b>	SCALE <b>10:1</b>	EC NO: 639809 DRWN: SCV CHK'D: HSHIMOIYAMA APPR: SHOSHIKAWA			
GENERAL TOLERANCES (UNLESS SPECIFIED)		INITIAL REVISION:		PRODUCT CUSTOMER DRAWING	
ANGULAR TOL	± 3.0°	DRWN: YSHIBATA APPR: MSASAO		DOCUMENT NUMBER <b>5024301001</b>	DOC TYPE PSD
4 PLACES	± 0.03	2017/01/16		DOC PART 000	REVISION C
3 PLACES	± 0.03	2017/02/21		SHEET NUMBER 1 OF 2	
2 PLACES	± 0.05	DRAFT WHERE APPLICABLE MUST REMAIN WITHIN DIMENSIONS		MATERIAL NUMBER SEE TABLE	
1 PLACE	± 0.1	THIRD ANGLE PROJECTION		CUSTOMER GENERAL	
0 PLACES	± 0.2	DRAWING A3-SIZE		SERIES 502430	



嵌合断面図 (参考)  
MATED DRAWING (REFERENCE)



P.C. BOARD PATTERN LAYOUT  
(REFERENCE)

注記 NOTES

1. 使用材料 MATERIAL

ウェハー : 液晶ポリマー (LCP) ガラス充填 UL94V-0 (黒)  
WAFER: LIQUID CRYSTAL POLYMER (GLASS FILLED) UL94V-0 (COLOR: BLACK)

ピン : りん青銅 (t=0.08)  
PIN : PHOSPHOR BRONZE (t=0.08)

金具 : りん青銅 (t=0.15)  
FITTING NAIL : PHOSPHOR BRONZE (t=0.15)

2. メッキ仕様 PLATING

ピン PIN

金メッキ 0.1マイクロメートル以上  
GOLD 0.1MICROMETER MINIMUM

下地メッキ : ニッケルメッキ 1.0マイクロメートル以上  
UNDER PLATING : NICKEL 1.0MICROMETER MINIMUM

※コンタクト部とテール部はニッケルメッキによって分断されている金メッキです。  
DIVIDE INTO PARTS THE GOLD PLATING OF THE CONTACT AND THE TAIL PART BY THE NICKEL PLATING.

金具 FITTING NAIL

フラッシュ金メッキ  
FLASH Au PLATING

下地メッキ : ニッケルメッキ 1.0マイクロメートル以上  
UNDER PLATING : NICKEL 1.0MICROMETER MINIMUM

$\triangle 3$  (全極数 / 2) = 偶数の場合に適用。  
APPLY FOR (CIRCUIT/2)=EVEN.

4. 嵌合相手 : 502426シリーズ  
MATE WITH : 502426 SERIES.

5. テール平坦度は、0.08以下  
テール及び金具の平坦度は、0.1以下  
TAIL COPLANARITY TO BE 0.08MAXIMUM.  
TAIL AND FITTING NAIL COPLANARITY TO BE 0.1MAXIMUM.

6. ELV 及び RoHS適合品  
ELV AND RoHS COMPLIANT.

$\triangle 7$  斜線部はパターン書込み禁止範囲と半田禁止範囲を示す。  
ただし、斜線部に同一配線を配置する場合はレジストを施し、この部分に半田は無きこと。  
NO PATTERN CIRCUIT AND NO SOLDER ALLOWED IN THE SHADED AREA.  
HOWEVER, IF NEEDED TO ADD A TRACE OF THE SAME CIRCUIT, PUT THE SOLDER-RESIST,  
YET NO SOLDER ALLOWED IN THE AREA.

8. 10極以下については、Doc. 5024301000を参照願います。  
FOR 10 CIRCUIT SIZE OR LESS, REFER TO DOC. #5024301000.

14極以上に適応  
FOR 14 CIRCUIT SIZE OR OVER

THIS DRAWING CONTAINS INFORMATION THAT IS PROPRIETARY TO MOLEX ELECTRONIC TECHNOLOGIES, LLC AND SHOULD NOT BE USED WITHOUT WRITTEN PERMISSION		CURRENT REV DESC: REVISED		<b>molex</b>	
DIMENSION UNITS mm	SCALE 10:1				
GENERAL TOLERANCES (UNLESS SPECIFIED)		EC NO: 639809		PRODUCT CUSTOMER DRAWING	
ANGULAR TOL	± 3.0°	DRWN: SCV	2020/06/19	DOCUMENT NUMBER	
4 PLACES	± 0.03	CHK'D: HSHIMOYAMA	2020/07/02	5024301001	
3 PLACES	± 0.03	APPR: SHOSHIKAWA	2020/07/02	DOC TYPE	DOC PART
2 PLACES	± 0.05	INITIAL REVISION:		PSD	000
1 PLACE	± 0.1	DRWN: YSHIBATA		C	
0 PLACES	± 0.2	APPR: MSASAO		REVISION	
DRAFT WHERE APPLICABLE MUST REMAIN WITHIN DIMENSIONS		THIRD ANGLE PROJECTION	DRAWING	SERIES	MATERIAL NUMBER
			A3-SIZE	502430	CUSTOMER
				SEE SHEET 1	GENERAL
				SHEET NUMBER	
				2 OF 2	