

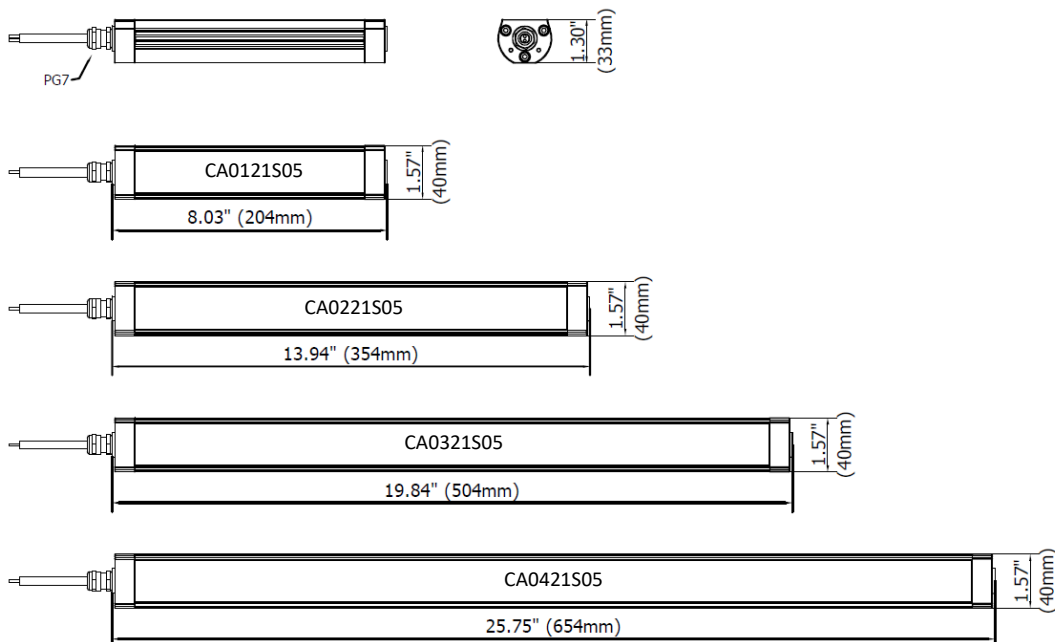
## 90° light beam



Designed for use in different work environments, A compact construction combining state-of-the art LED technology with a sturdy, anodized aluminum casing highly resistant to liquids and machine tool debris. Particularly suitable in any workplace where the space is very limited, but at the same time requires high-performance and intense lighting.

- Structure made entirely of anodized aluminum
- Outer diameter 1.57in (40mm) to be integrated into confined workspaces
- 4 lengths to meet every need
- Operating temperature from -04°F (-20°C) to +113°F (+ 45°C)
- Light beam amplitudes: 90° Wide
- LED lifespan: (L 70) > 60 000 h
- Light color 5000 K - CRI 80
- 24 Vdc via 10ft. (3m) Cable
- Attaching with COALPHA.FX01 side-mounting brackets
- Approval: cURus in compliance with UL2018 / CSA / CE

### DIMENSIONS



## MECHANICAL FEATURES

Model	CA0121S05	CA0221S05	CA0321S05	CA0421S05
Casing Material	Anodized extruded aluminum			
Side Enclosers	Anodized aluminum			
Surface Treatment	Standard: 10 microns of natural aluminum solution oxidation			
Front Glass	Extra clear tempered 0.16 in (4 mm) thick frosted glass IK06			
Weight	1.15 lb (0.55kg)	1.65 lb (0.75kg)	2.20 lb (1.00kg)	2.87 lb (1.30kg)
Protection Index	IP67 Compatible with NEMA Type 12			
Impact Resistance	1.00 N m/s			
Operating Temperature	04°F (-20°C) to +113°F (+ 45°C)			
Installation	CAFX02 / Magnet B05			

## ELECTRICAL FEATURES

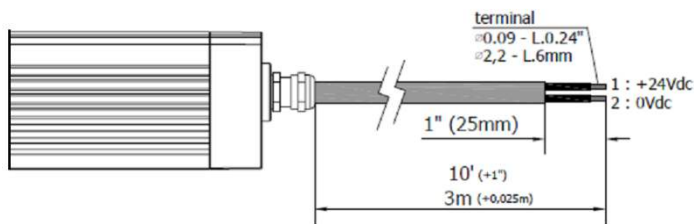
Model	CA0121S05	CA0221S05	CA0321S05	CA0421S05
Power Input	6 W	12 W	18 W	24 W
Power Supply	18-48 Vdc			
Current	0.25 A @ 24 Vdc	0.50 A @ 24 Vdc	0.75 A @ 24 Vdc	1 A @ 24 Vdc
Device Power Protection	Full protection against reverse polarity			
Electrical Connection	Cable	Cable	Cable	Cable
Insulation Class	Class III (SELV)			
Efficiency Class	A/A+/A++/A+++ (Integrated LED module) compliant with UE Law No. 874/2012			

## CONNECTION\* with 10 ft. (3m) Cable, Standard length

PVC 2x 0.17 in<sup>2</sup> (0.75 mm<sup>2</sup>) L= 10 ft. (3 m)

Conductor

Connection



1 Black

+24 Vdc

2 Black

0

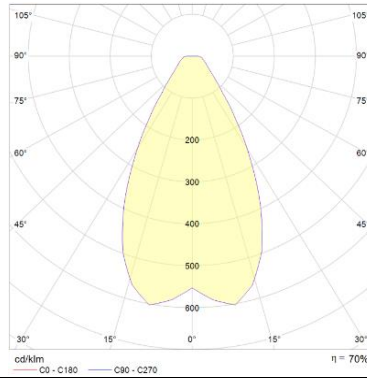
## OPTICAL FEATURES

Model	N° and Type of LEDs	LED Lifespan	Light Color	CRI	Light Beam Angle	Luminous Flux	Efficiency
CA0121S05	Mid Power LED	60 000 h L70 **	5000 K	80	90°	600 lm	100 lm/W
CA0221S05	Mid Power LED	60 000 h L70 **	5000 K	80	90°	1200 lm	100 lm/W
CA0321S05	Mid Power LED	60 000 h L70 **	5000 K	80	90°	1800 lm	100 lm/W
CA0421S05	Mid Power LED	60 000 h L70 **	5000 K	80	90°	2400 lm	100 lm/W

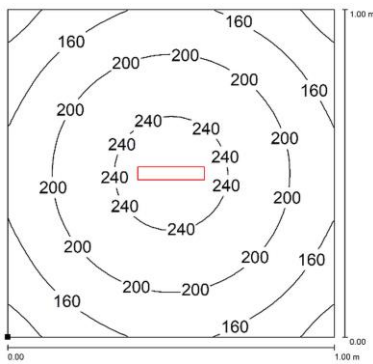
\*\* Flow beam reduced by less than 30% after 60,000 hours

# PHOTOMETRIC DIAGRAMS

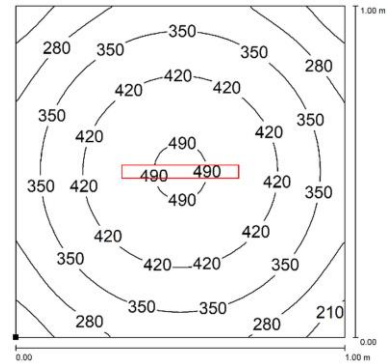
90° Flow beam



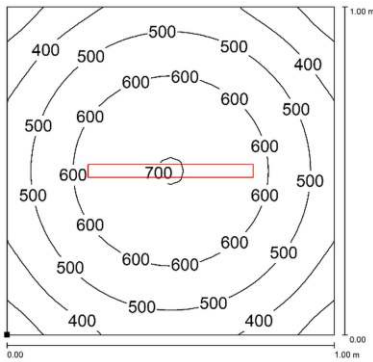
CA0121S05



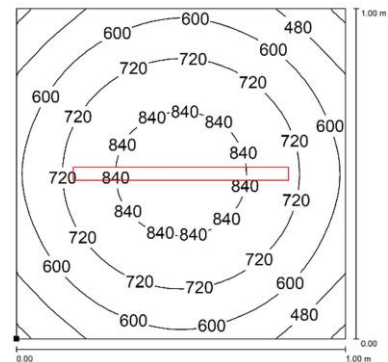
CA0221S05



CA0321S05



CA0421S05



## MOUNTING OPTIONS

Product pictures

Description

Code product



Robust, versatile and vibration resistant, it is a 70° angle adjustment bracket. Made of stainless steel, it is the perfect solution when you need to adjust the direction of the flow beam in high-vibrating applications.

CAFX02



Strong magnetic disc made of neodymium and high grip. Use along with CAFX01 brackets when you need to move the light frequently and to different positions. Suitable to use in high-vibrating applications.

B05

## ORDER CODES

Model	Description
CA0121S0502	CO.ALPHA, 8.03"(204mm), 90°, 6W, 24 Vdc, CABLE 10ft (3mt) + CO.ALPHA, KIT STAINLESS STEEL SIDE BRACKETS 70°
CA0221S0502	CO.ALPHA, 13.94"(354 mm), 90°, 12W, 24 Vdc, CABLE 10ft (3mt) + CO.ALPHA, KIT STAINLESS STEEL SIDE BRACKETS 70°
CA0321S0502	CO.ALPHA, 19.84"(504 mm), 90°, 18W, 24 Vdc, CABLE 10ft (3mt) + CO.ALPHA, KIT STAINLESS STEEL SIDE BRACKETS 70°
CA0421S0502	CO.ALPHA, 25.74"(654 mm), 90°, 24W, 24 Vdc, CABLE 10ft (3mt) + CO.ALPHA, KIT STAINLESS STEEL SIDE BRACKETS 70°
CAFX02	CO.ALPHA, KIT STAINLESS STEEL SIDE BRACKETS 70°
B05	MAGNETIC BASE WITH SCREW M5 Ø30X9mm