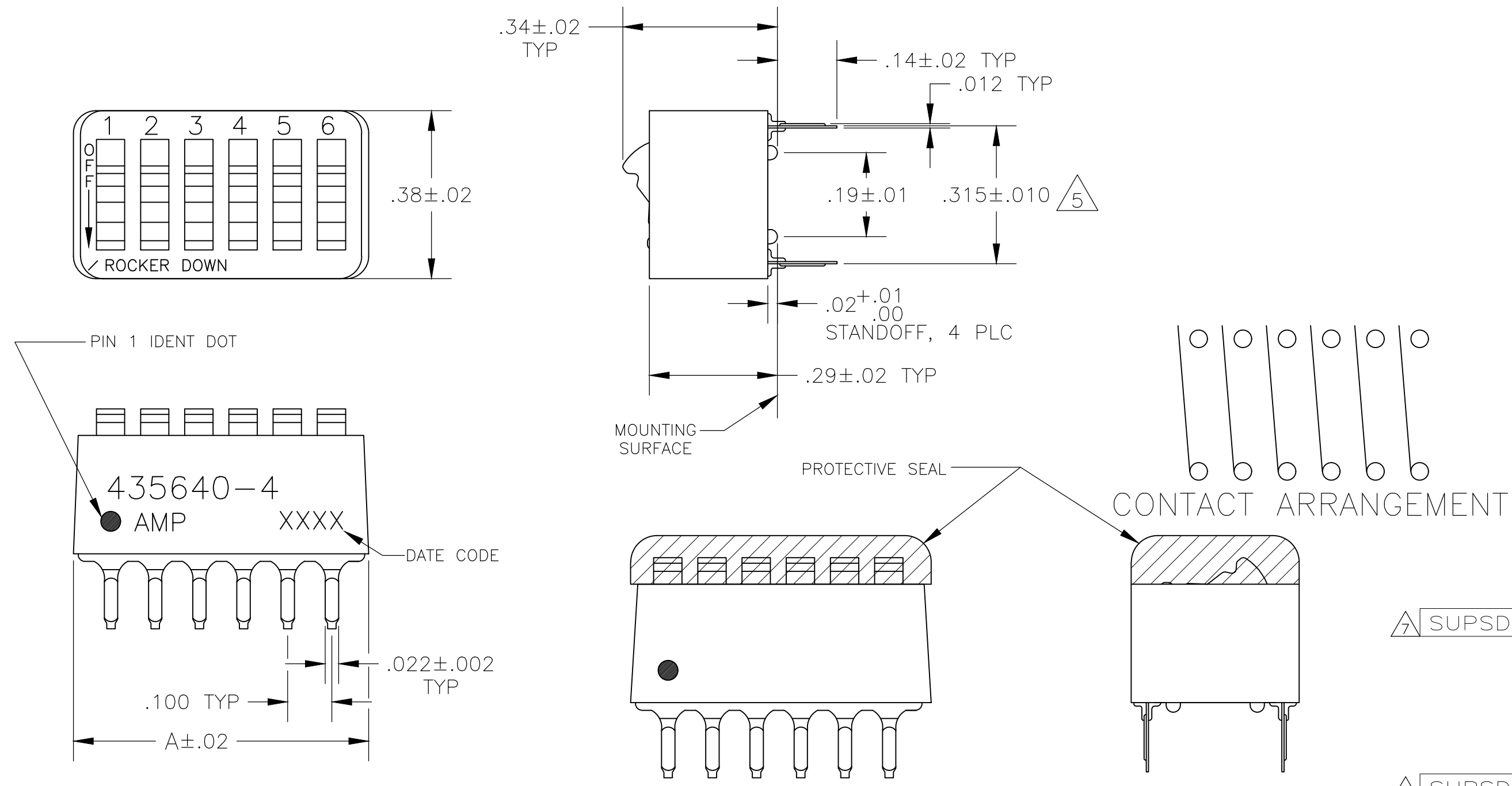


| REVISIONS | | | | | |
|-----------|-----|---------------|-----------|-----|------|
| P | LTR | DESCRIPTION | DATE | DWN | APVD |
| AN | | ECO-20-004897 | 24AUG2020 | SB | KJ |

- FOR ADDITIONAL SPECIFICATIONS SEE AMP PRODUCT SPEC 108-7532.
- SWITCH SHOWN IN OPEN POSITION.
- ALL CHARACTERS AND ROCKERS ARE WHITE, HOUSING IS BLUE.
- LASER MARKING WILL VARY ON 2 AND 3 POSITION SIDES DUE TO SPACE RESTRICTIONS.

- △ .315 DIMENSION APPLIES AT TERMINAL TIPS. TERMINALS ARE .300-.000 AT MOUNTING SURFACE.
- △ STRIPPABLE TRANSPARENT SEAL, SEE FIG 1.



| FIG | DESCRIPTION | NO OF POSN | TERMINAL PITCH | TERMINAL LENGTH | TERMINAL WIDTH | TERMINAL SPACING | TERMINAL THICKNESS | TERMINAL LENGTH AT TIPS | TERMINAL LENGTH AT MOUNTING SURFACE |
|-----|-------------|------------|----------------|-----------------|----------------|------------------|--------------------|-------------------------|-------------------------------------|
| △ 7 | OBSOLETE | FIG 6 | — | 1.08 | 10 | 6-435640-1 | — | — | — |
| | | | | .58 | 5 | 6-435640-0 | | | |
| | | | | .48 | 4 | 5-435640-9 | | | |
| | | | | .88 | 8 | 5-435640-8 | | | |
| | | | | .98 | 9 | 5-435640-7 | | | |
| | | | | .68 | 6 | 5-435640-6 | | | |
| | | | | .58 | 5 | 5-435640-5 | | | |
| | | | | .48 | 4 | 5-435640-4 | | | |
| | | | | .88 | 8 | 5-435640-3 | | | |
| | | | | .88 | 8 | 5-435640-2 | | | |
| | | | | 1.08 | 10 | 5-435640-1 | | | |
| | | | | .88 | 8 | 5-435640-0 | | | |
| | | | | .88 | 8 | 4-435640-9 | | | |
| | | | | .58 | 5 | 4-435640-8 | | | |
| | | | | 1.08 | 10 | 4-435640-7 | | | |
| | | | | 1.28 | 12 | 4-435640-3 | | | |
| | | | | 1.08 | 10 | 4-435640-1 | | | |
| | | | | .98 | 9 | 4-435640-0 | | | |
| | | | | .88 | 8 | 3-435640-9 | | | |
| | | | | .78 | 7 | 3-435640-8 | | | |
| | | | | .68 | 6 | 3-435640-7 | | | |
| | | | | .58 | 5 | 3-435640-6 | | | |
| | | | | .48 | 4 | 3-435640-5 | | | |
| | | | | .38 | 3 | 3-435640-4 | | | |
| | | | | .28 | 2 | 3-435640-3 | | | |
| | | | | 1.28 | 12 | 3-435640-2 | | | |
| | | | | .38 | 3 | 3-435640-0 | | | |
| | | | | .28 | 2 | 2-435640-9 | | | |
| | | | | .78 | 7 | 2-435640-2 | | | |
| | | | | 1.08 | 10 | 435640-7 | | | |
| | | | | .98 | 9 | 435640-6 | | | |
| | | | | .88 | 8 | 435640-5 | | | |
| | | | | .68 | 6 | 435640-4 | | | |
| | | | | .58 | 5 | 435640-3 | | | |
| | | | | .48 | 4 | 435640-2 | | | |
| | | | | .78 | 7 | 435640-1 | | | |

SUPSD BY 3-435668-3
 SUPSD BY 2-435668-6
 SUPSD BY 3-1589670-4

435640-4 SHOWN

△ OBSOLETE PARTS: OBSOLETE CIS STREAMLINING PER D.RENAUD/D.SINISI

8 MARKS WILL BE ADDED BY LASER MARK PROCESS.

| | | | | | |
|--|--|---|---------|---|---------------|
| THIS DRAWING IS A CONTROLLED DOCUMENT. | | DWN | 15NOV89 | R.TALLEY | |
| DIMENSIONS: INCHES | | CHK | 06MAR90 | R.L.MILLER | |
| TOLERANCES UNLESS OTHERWISE SPECIFIED: | | APVD | 06MAR90 | H.LEITER | |
| 0 PLC ± - | | PRODUCT SPEC | | NAME | |
| 1 PLC ± - | | APPLICATION SPEC | | SWITCH ASSY, DIP, TYPE C, 7100 SERIES, SPST, STANDARD | |
| 2 PLC ± - | | | | SIZE | CAGE CODE |
| 3 PLC ± .005 | | | | A2 | 00779 |
| 4 PLC ± - | | | | DRAWING NO | RESTRICTED TO |
| ANGLES ± - | | | | C=435640 | |
| MATERIAL | | FINISH | WEIGHT | SCALE | SHEET |
| HOUSING & ROCKERS; POLYESTER | | CONTACTS: PLATED .00030 MIN GOLD IN CONTACT AREA OVER .00050 MIN NICKEL | - | 4:1 | 1 OF 1 |
| CONTACTS; COPPER ALLOY | | | | REV | AN |
| | | | | | |