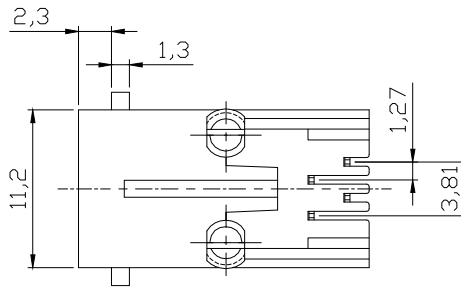


PC Board Layout
Component Side Shown



NOTES:

Mechanical:

1. Housing material : Glass Filled Polyester UL94V-0 , Color: Black
2. Contact material: Phosphor Bronze t=0.35mm
- ③ 3. Contact plating: 6u" Gold on contact area
100~200u" Tin on solder area
all over 30~50u" Nickel
4. Operating Life: 750 Cycles min.
5. PCB Retention Pre-solder: 1 LB min.
6. PCB Retention Post-solder: 10 LBS min.

Electrical:

1. Voltage Rating: 125VAC.
2. Current Rating: 1.5AMP.
3. Contact Resistance: 50mΩ max.
4. Insulation Resistance: 500MΩ min. @ 1000 VDC
5. Dielectric Strength: 1000 VAC RMS 60Hz, 1 min.

Environmental:

1. Storage: -40°C To +85°C
2. Operation: -40°C~+85°C
- ② 3. Wave Soldering Temp: 200~220°C(5~10S)
- ② Packing: 120pcs/Tray, 2640pcs/Carton

RoHS compliant
Unit:mm



File No.: E345352

Scale	Free					Date	Name	Customer-No.
TOLERANCE						Drawn	08.07.2009	Dean
X.X	±0.20							
X.XX	±0.15	④	Update dimension 6.70 to 4.90	12.11.2021	Luca	Approved	12.11.2021	Luca
X.XXX	±0.10	③	Update the contact plating	25.08.2015	Amy			
DIM	TOL	②	Update	27.05.2013	Amy			
		①	Drawn	08.07.2009	Dean			
Angle	±5°	ld.	Modification	Date	Name			

Customer-No.		
ASSMANN WSW-No.		A-20040
Drawing-No.	ASS 0447 CO	rev04
Replace	SHEET	

