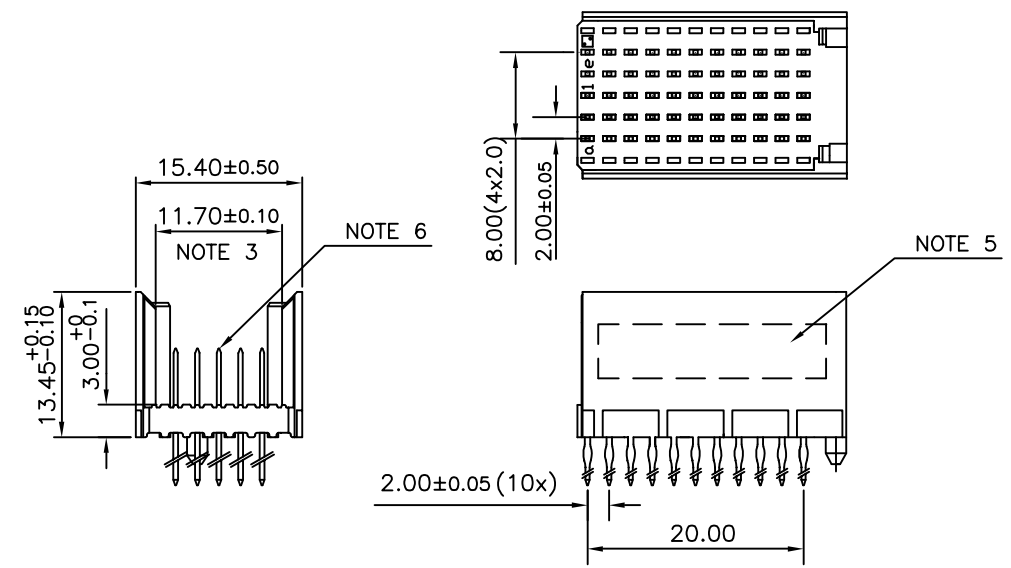


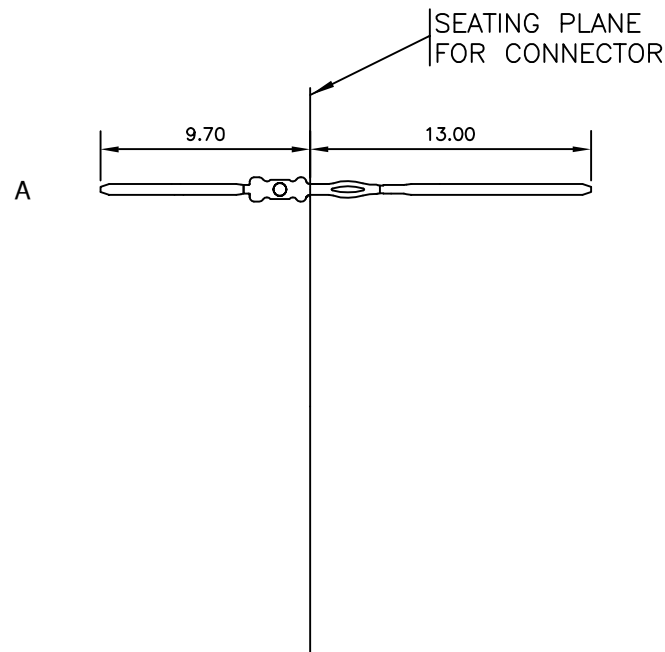
LOADING PATTERN MATING SIDE

f	0	0	0	0	0	0	0	0	0	0
e	A	A	A	A	A	A	A	A	A	A
d	A	A	A	A	A	A	A	A	A	A
c	A	A	A	A	A	A	A	A	A	A
b	A	A	A	A	A	A	A	A	A	A
a	A	A	A	A	A	A	A	A	A	A
z	0	0	0	0	0	0	0	0	0	0
POS	01			05					10	

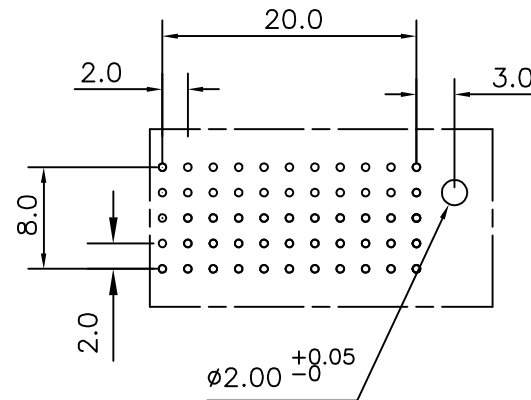
LOADED CONNECTOR ASSEMBLY  
(FOR EXAMPLE)



CONTACT OVERVIEW



LAY-OUT P.C.B.-HOLE



HM2P09PKE120 LEAD FREE INDICATOR : LF = LEAD FREE (DIGIT 15 & 16)  
PLATING CODE (DIGIT 13 AND 14) (REF DRW NO. BS,C , 201844 , 003)

NOTES

- THIS PRODUCT IS CSA APPROVED.
  - THIS PRODUCT IS UL RECOGNIZED.
  - MEASURED AT THE BOTTOM.
  - MATERIAL CONTACT: PHOSPHORBRONZE  
HOUSING: CREAM WHITE GLASS FILLED POLYESTER UL-94V0
  - CONNECTOR PRINTED WITH P/N AND DATE CODE.
  - FOR ACTUAL CONTACT LOADINGS, SEE LOADING PATTERN MATING SIDE.
  - SHAPE OF CONNECTOR HOUSING CAN ALTER DEPENDING ON PRODUCTION LOCATION
  - THE PRODUCT (LF) MEETS EUROPEAN UNION DIRECTIVES AND OTHER COUNTRY REGULATIONS AS DESCRIBED IN GS-22-008
  - FOR RECOMMENDED PTH DIMENSIONS REFER DRAWING : BS, A , 201572 , 001
- CATALOG NO: HM2P09PKE120- - -

mat'l. code SEE NOTE 4				surface ISO 1302 <input checked="" type="checkbox"/>	tolerance ISO 406 ISO 1101	projection 	product family MLLIPACS			
ltr	ecn no	dr	date	tolerances unless otherwise specified		MM	title			
A	104-0003	MINI	2004/01/27	angles	linear		MPACS 5+2R STR HDR PF CONN TYPE C			
B	105-0187	MINI	2005/10/08	0°±1°			scale -			
C	106-0090	MINI	2006/06/26	dr	MINI K VANDANATH	2004/01/27	dwg no		sheet 1 of 1	size
				enr	BIJU K PAUL	2004/01/27	BS, C ,203028, 107		A3	
				chr	BIJU K PAUL	2006/06/26	type		Product	Customer
				appd	BIJU K PAUL	2006/06/26	Drawing			
sheet index	revision sheet	C	1							



FCIconnect.com

Copyright FCI